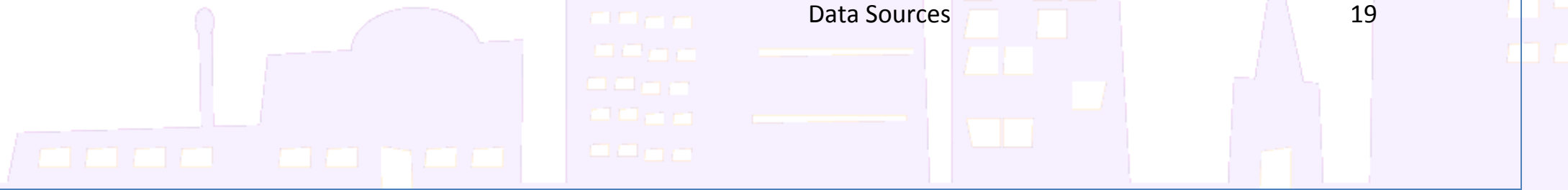


Blackwall & Cubitt Town

Ward Profile

Contents

	Page
Population	2
Age Structure	2
Ethnicity	3
Religion	3
Household Composition	4
Health & Unpaid Care	5
Deprivation	8
Crime Data	9
Schools Performance	10
Annual Resident Survey 2011/12 summary	11
Local Layouts	12
Within your ward...	15
In your borough...	17
Data Sources	19



Population

- The 2011 Census found that Blackwall & Cubitt Town had 19,461 residents which accounted for 7.7% of the total population of Tower Hamlets.
- The population density of the ward was 87 residents per hectare (115 square meters for each resident of the ward), making it the second least densely populated ward in the borough. This compares with a borough density of 129 residents per hectare and 52 per hectare in London.
- There were also 8,654 occupied households in this ward and an average household size of 2.25 residents; this is lower than the average size for Tower Hamlets of 2.47.

Change

- The population of Blackwall & Cubitt Town increased by 63% between 2001 and 2011. This was significantly higher than the borough average of 29.6%, but was only the 3rd highest level of growth in seen Tower Hamlets.
- Over the next 10 years the population of the ward is projected to grow by between 39% to 49%, reaching somewhere between 27,200 and 29,200 residents by 2021.

Age Structure

Figure 1: Age Structure

Residents by Age	0-15	16-64	65+	Total
Blackwall and Cubitt Town	3,465	15,083	913	19,461
Blackwall and Cubitt Town %	17.8%	77.5%	4.7%	100%
Tower Hamlets %	19.7%	74.1%	6.1%	100%

Figure 2: Ward population density

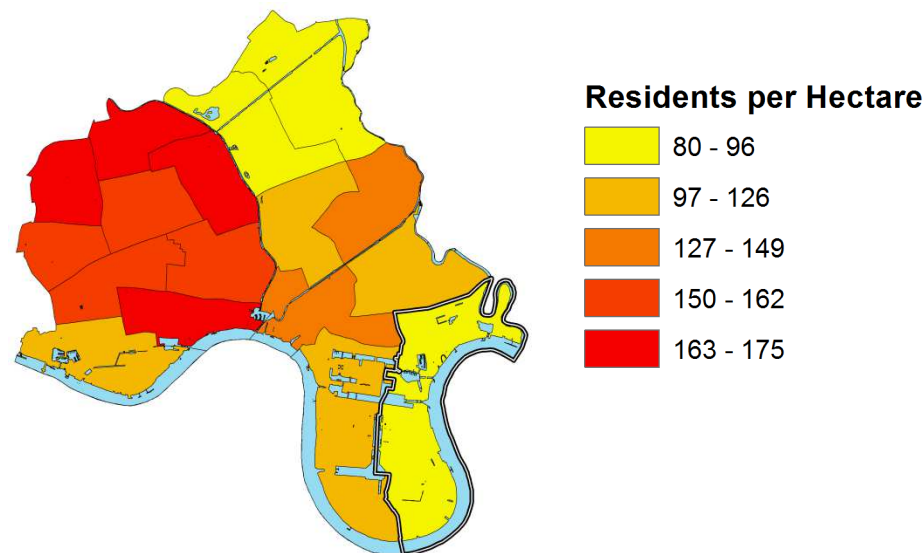
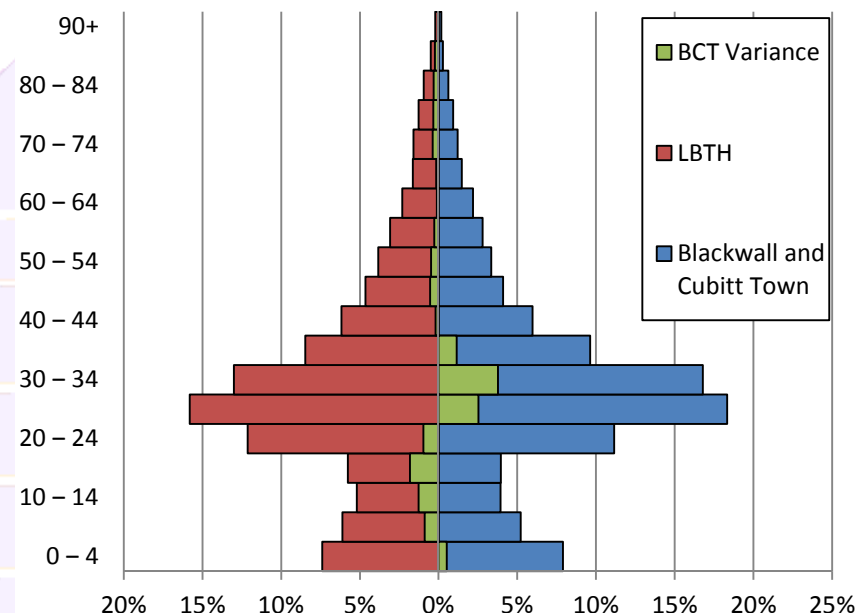


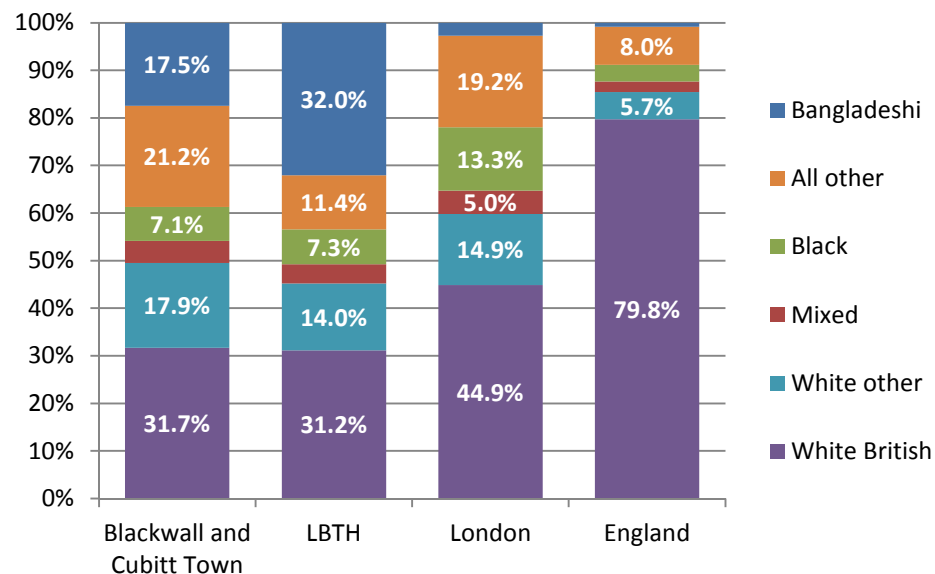
Figure 3: Proportion of population by age



Ethnicity

- The proportion of residents identifying as ‘White British’ in the Census for Blackwall & Cubitt Town was 31.7%, this is close to the borough average of 31.2% but lower than the average for London (44.9%).
- Residents of Bangladeshi ethnicity accounted for 17.5% of residents, below the borough average of 32%.
- Half (50.4%) of residents in this ward are from black and minority ethnic (BME) groups which is lower than the overall figure for Tower Hamlets of 55% but higher than the London average of 40.2%.
- The three largest ethnic groups in the borough (White British, Bangladeshi & Other White) account for 67% of residents in this ward. This is the second lowest proportion in the borough after Millwall.

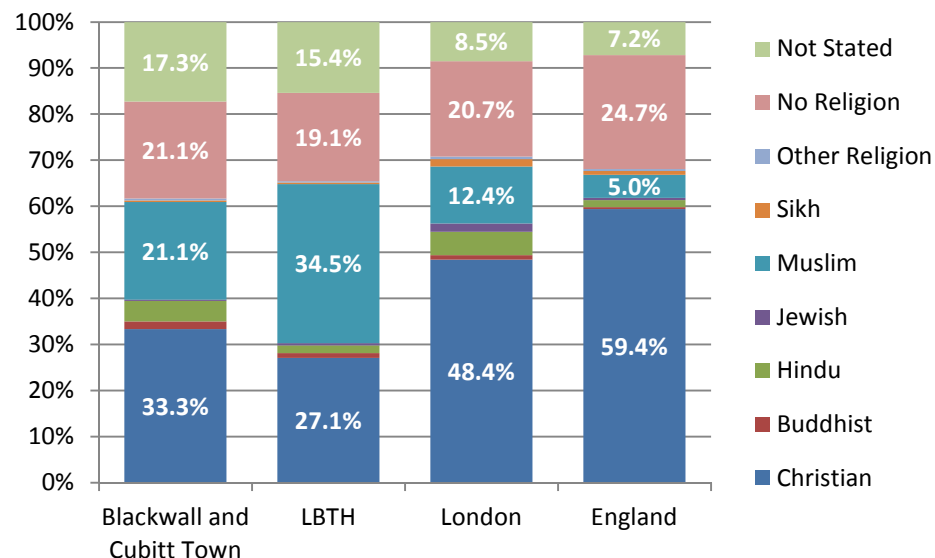
Figure 4: Proportion of Residents by Ethnicity



Religion

- Blackwall & Cubitt Town had the 2nd highest proportion of residents (17.3%) in the borough that opted to not respond to the question on religion
- A further 21% of residents in this ward explicitly stated that they had no religious beliefs.
- Religious groups other than Christian or Muslim accounted for 7.2% of residents in this ward, which was the second highest proportion in the borough.

Figure 5: Proportion of Residents by Religion



Household Composition

- 23.8% of the households in this ward contain families with dependent children. This is lower than the borough average of 26.6%, and the average for London of 29%.
- 40.8% of the residents of Blackwall & Cubitt Town live in family households with dependent children.
- Single adult households account for a further 35.1% of households, however, only 15.6% of the wards residents live in this type of household.
- Older people living alone (aged 65+) account for 4.1% of households in the ward which is lower than the average for Tower Hamlets of 6%, but below the London figure of 9.6%

Figure 6: Average household size

Average residents per household	Blackwall and Cubitt Town	Tower Hamlets	London	England
Households with dependent children	3.85	4.30	3.89	3.78
Households without dependent children	1.75	1.81	1.84	1.78
Average household size	2.25	2.47	2.47	2.36

Figure 7: Household composition – percentage of households by type

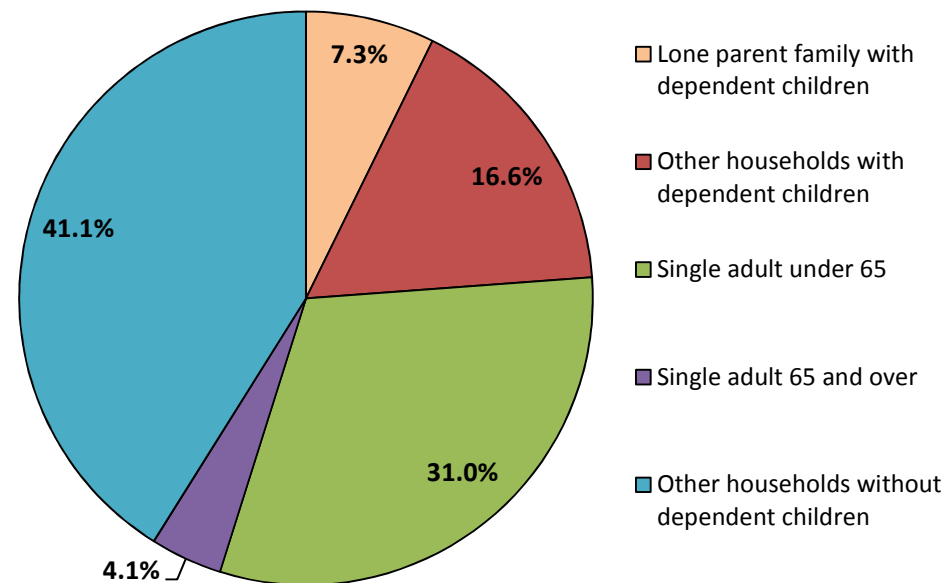
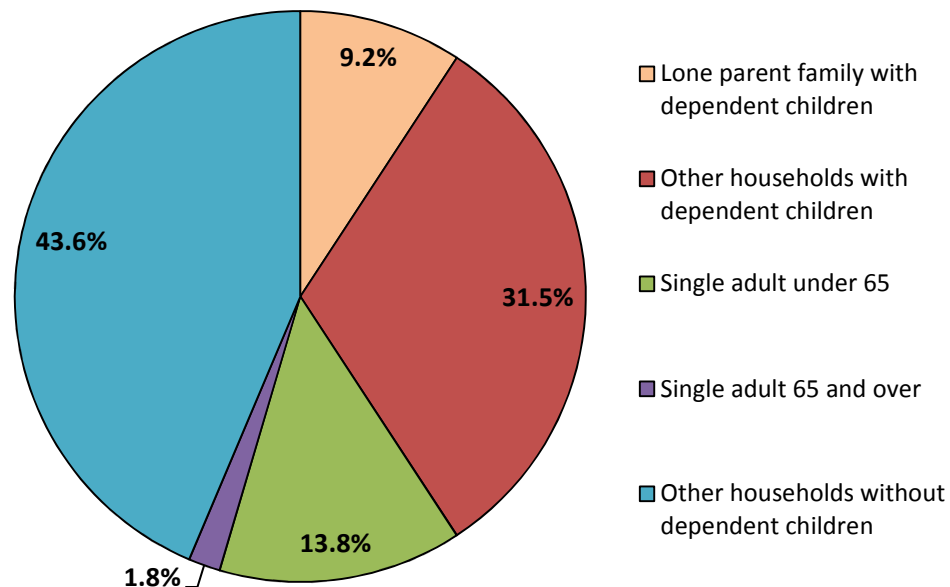


Figure 8: Household composition – percentage of residents that live in each type of household



Health & Unpaid Care

- 86.9% of the residents in Blackwall & Cubitt Town reported that they were in either 'good' or 'very good' health. This was above the borough and London averages (83.3% and 83.8% respectively), and above the average for England at 81.4%.
- 10.3% of residents reported that their day-to-day activities were limited to some degree by a long term health problem or disability, compared with an average for the borough of 13.5%.
- 6.6% of residents provided unpaid care to someone who has a long term health problem or disability (1,295 residents). This was below as the Tower Hamlets figure for provision of unpaid care of 7.6%
- 2.6% of residents provided 20 hours or more of unpaid care a week (515 residents). This was a lower proportion than the borough average of 3.3%.

Figure 10: Reported Health of Blackwall & Cubitt Town Residents

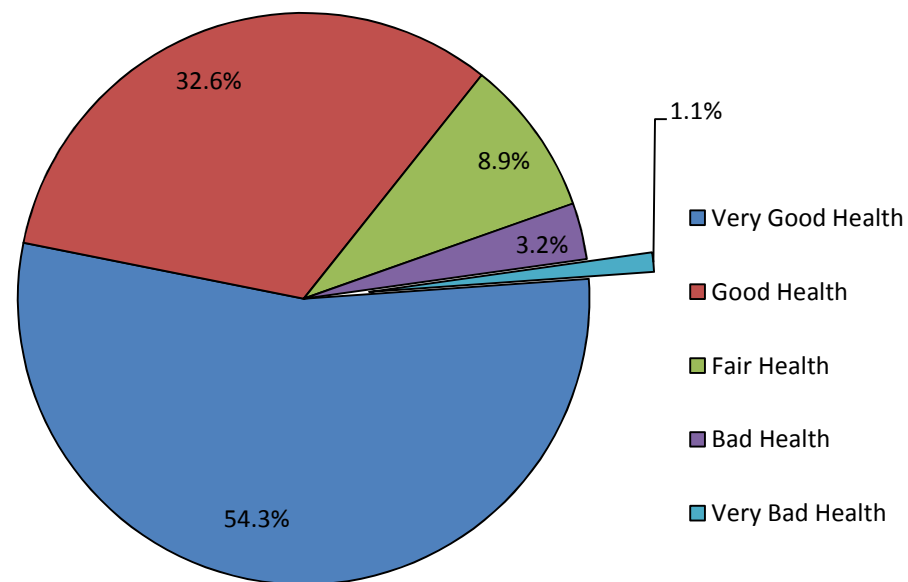
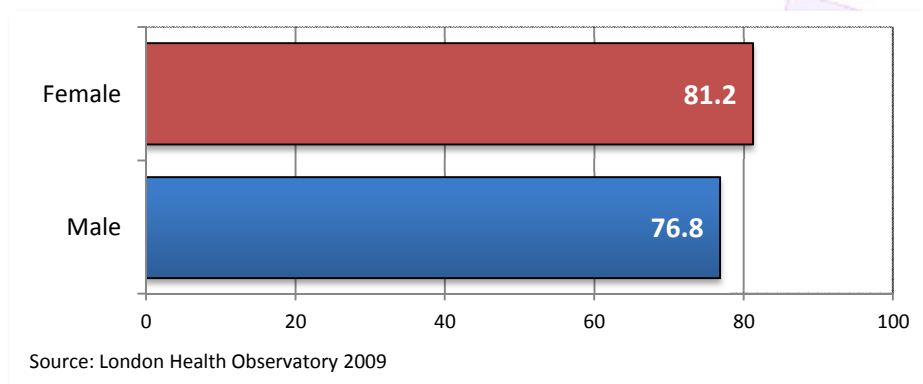


Figure 9: Average Life Expectancy



- Female life expectancy in Blackwall & Cubitt Town is 81.2 years, above the borough average of 80.7 years. This compares to the lowest female life expectancy in the borough of 77.9 years in Mile End East, and the highest female life expectancy of 89.2 years in Millwall.
- Male life expectancy is 76.8 years, above the borough average of 75.2 years. This compares to the lowest male life expectancy in the borough of 72.5 years in St Dunstan's & Stepney Green, and the highest male life expectancy of 80.4 years in St Katherine's & Wapping.

Public Health Data

Figure 11: Standardised Admission Ratio for Emergency Hospital Admissions – 2010/11

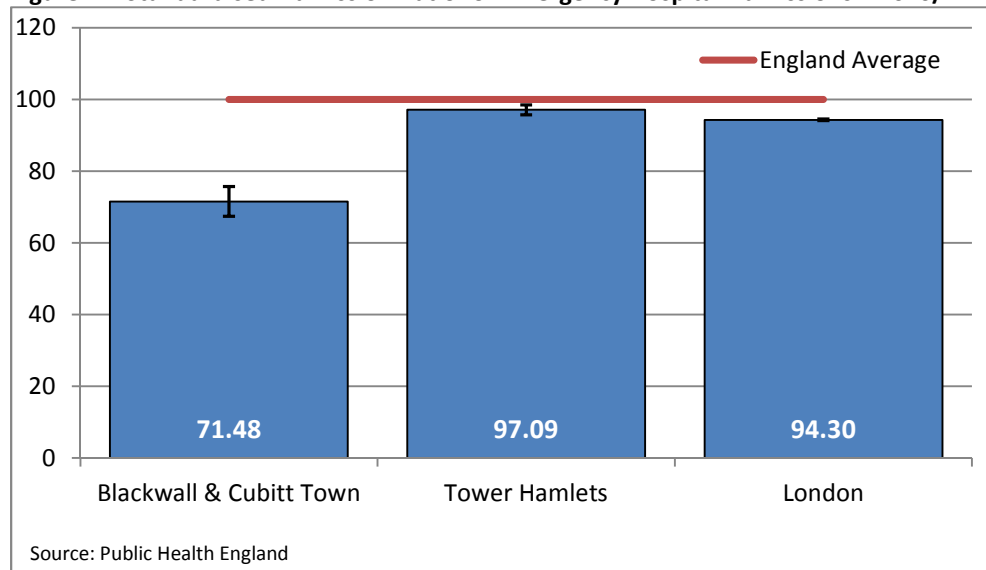


Figure 12: Standardised Admission Ratio for Non-Emergency Hospital Admissions – 2010/11

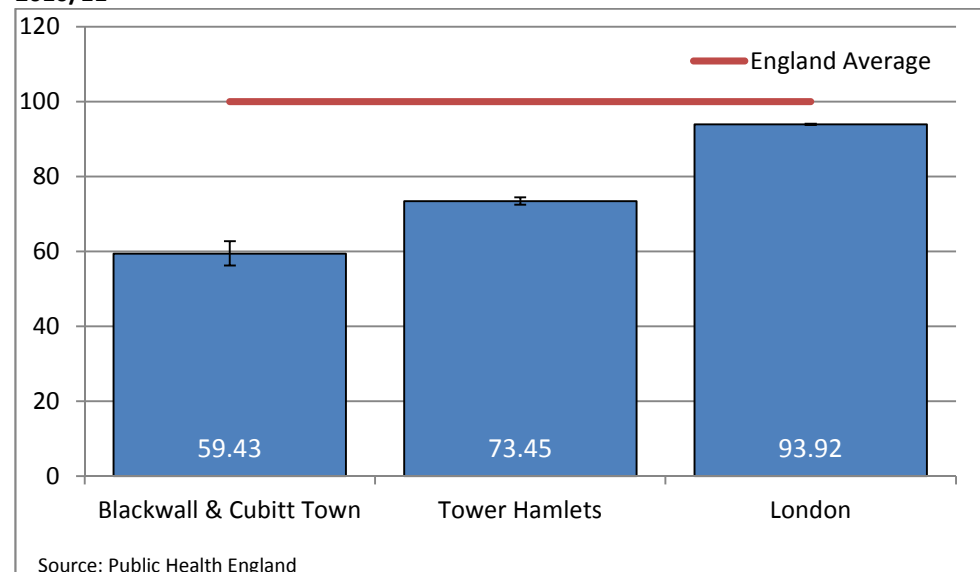
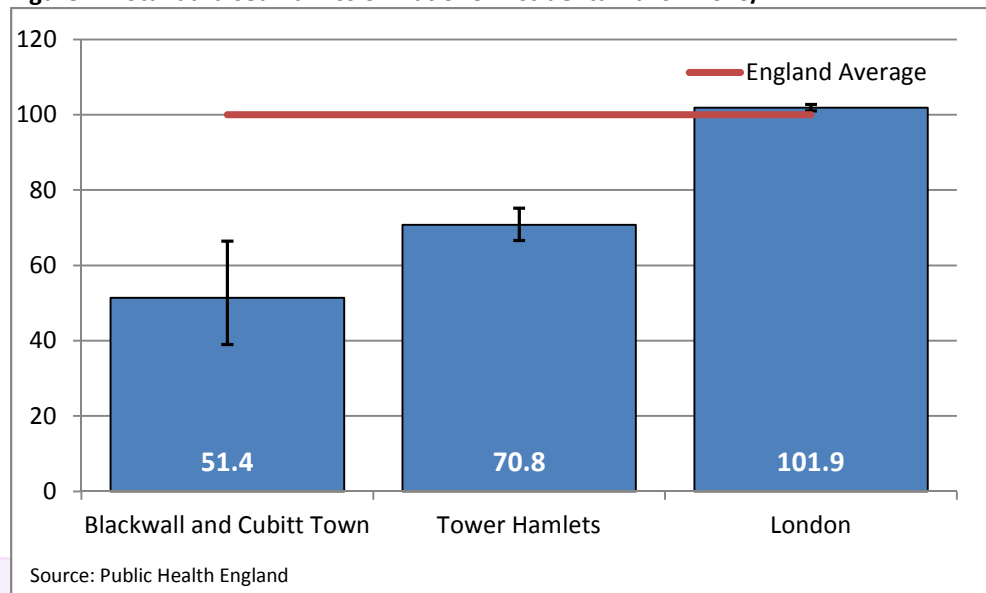


Figure 12: Standardised Admission Ratio for Accidental Falls – 2010/11



All of the figures presented here have been standardised to the England average admissions ratio. This means that the figures shown for wards, Tower Hamlets and for London are shown in relation to the England which is represented as 100 (the red line).

These figures are estimates and not a precise measure: the confidence intervals shown give an idea of the uncertainty attached to the estimate and the range of possible values.

Blackwall & Cubitt Town

Figure 14: Childhood Obesity Prevalence - % of children estimate - Reception Class

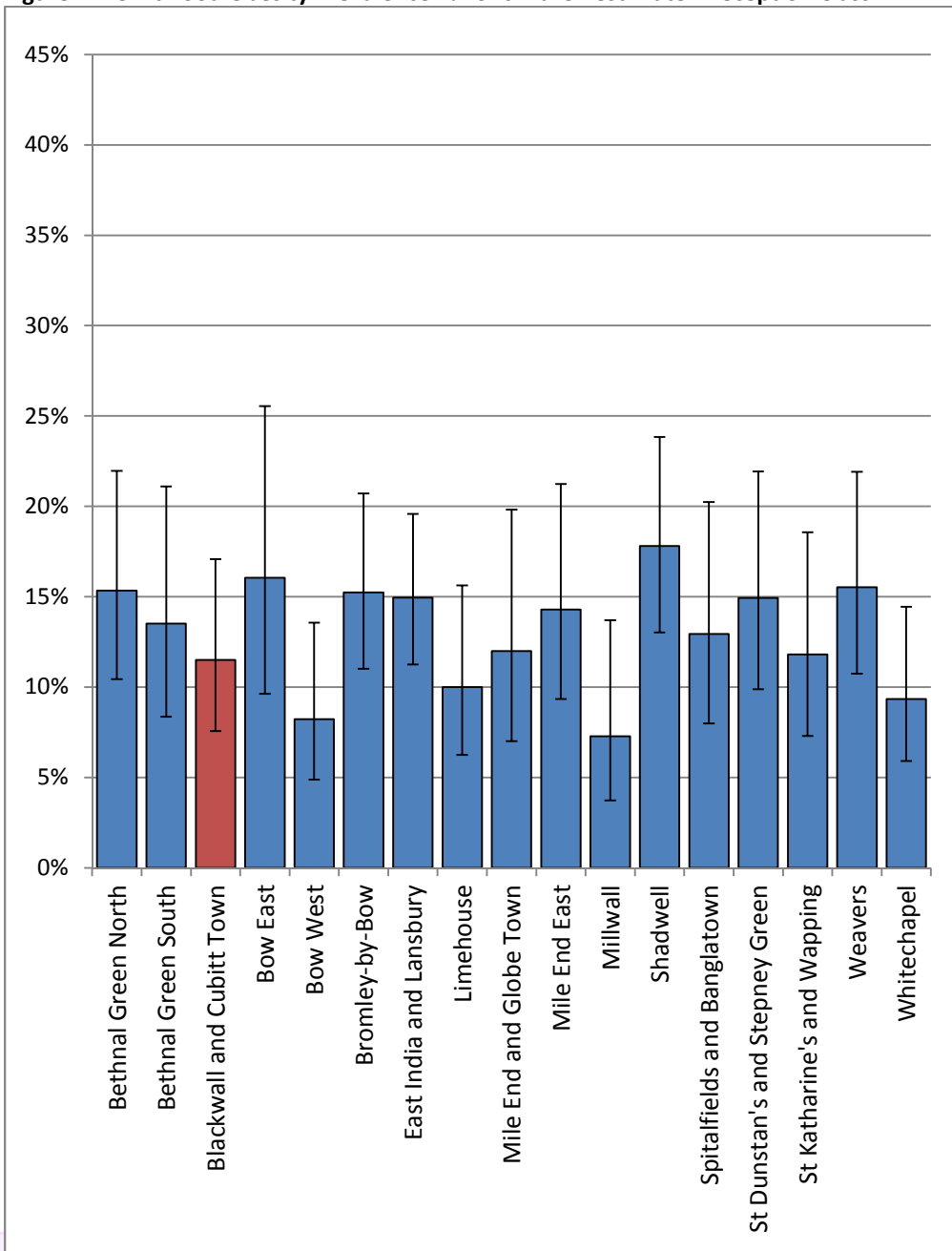
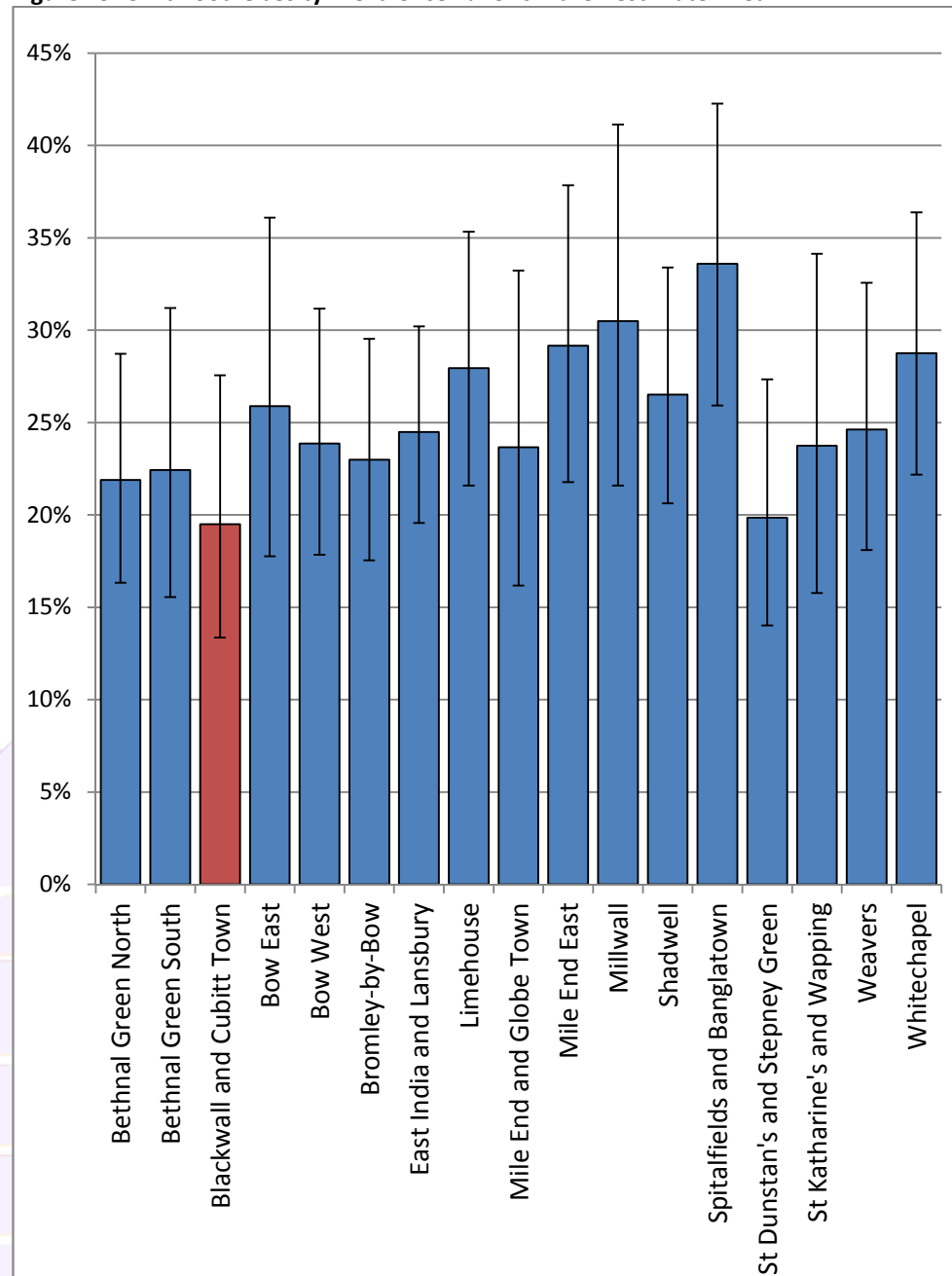
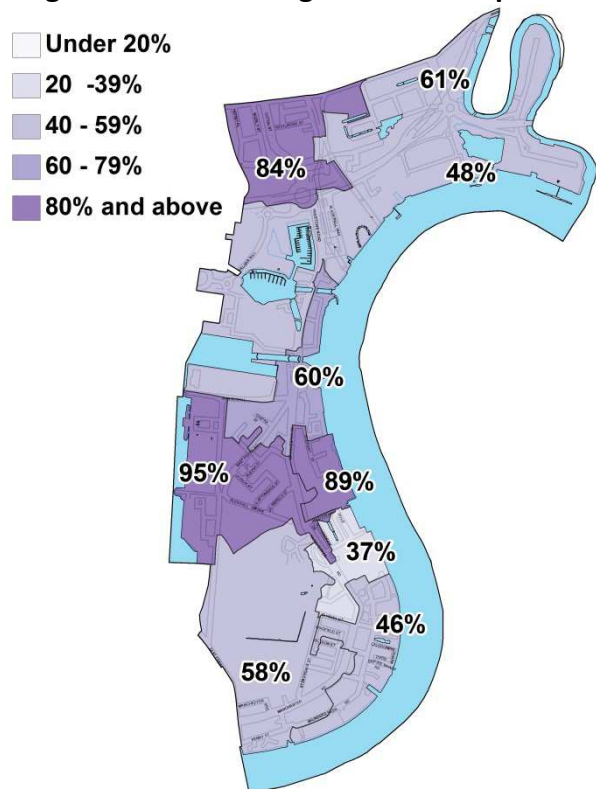


Figure 15: Childhood Obesity Prevalence - % of children estimate - Year 7



The following map data is taken from the Indices of Multiple Deprivation produced for the Department of Communities and Local Government in 2010.

Figure 8: Percentage of Children Living in Income Deprived Families



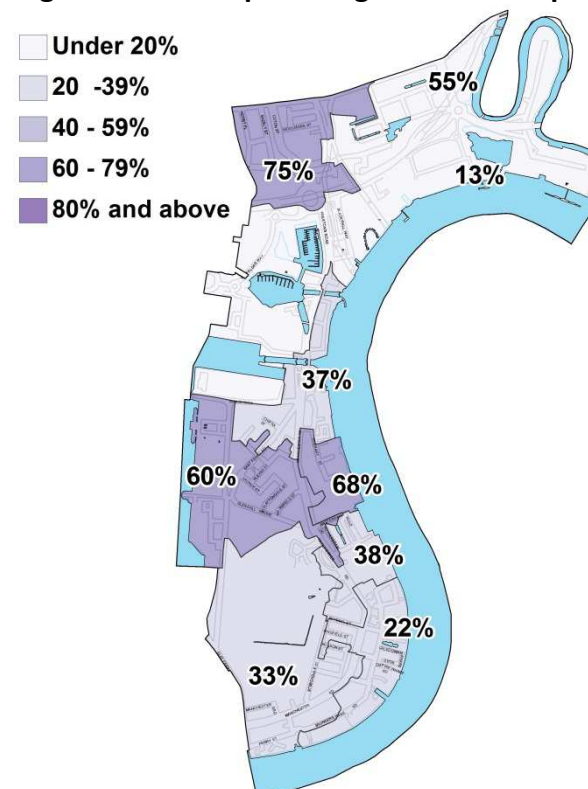
The average for Blackwall & Cubitt Town was 64% and this ward was ranked 2nd highest out of the 17 wards in Tower Hamlets.

The borough average was 59% (the highest local authority figure in England) and ranged between St Katharine's & Wapping with the lowest figure at 43%, and East India & Lansbury with the highest at 66%.

The London average for the percentage of children living in income deprived families was 32%.

The ward estimates of deprivation have been produced from the dataset by the Greater London Authority

Figure 9: Percentage of Older People Living in Income Deprived Families



The average for Blackwall & Cubitt Town was 41% and this ward was ranked 2nd lowest out of the 17 wards in Tower Hamlets.

The borough average was 53% (also the highest local authority figure in England) and ranged between St Katherine's & Wapping with the lowest figure at 37%, and Spitalfields & Banglatown with the highest at 82%.

The London average for the percentage of older people living in income deprived families was 24%.

Blackwall & Cubitt Town

Figure 10: Blackwall & Cubitt Town Recorded Crime (incidents per 1,000 residents)

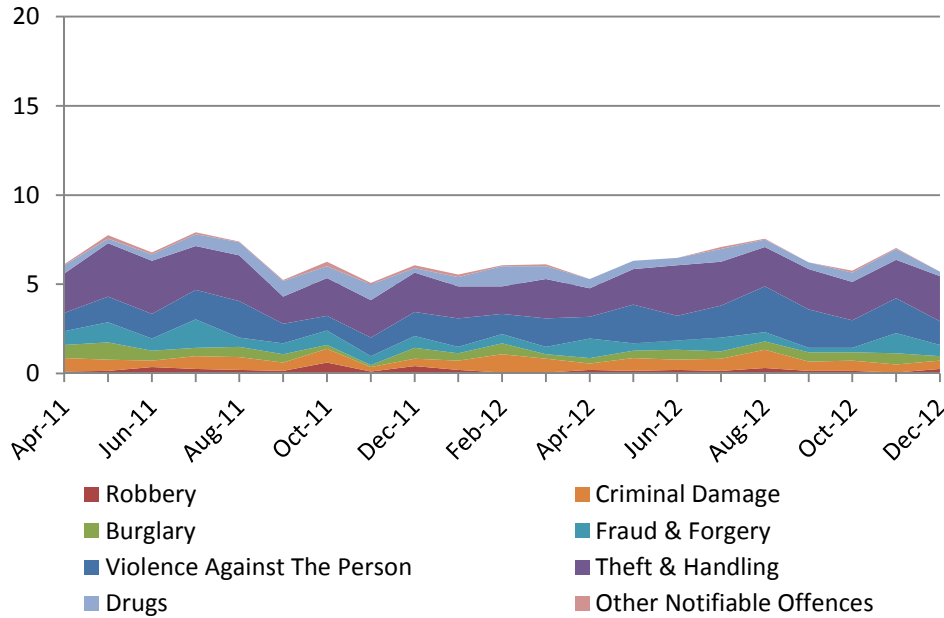


Figure 12: Tower Hamlets Recorded Crime (incidents per 1,000 residents)

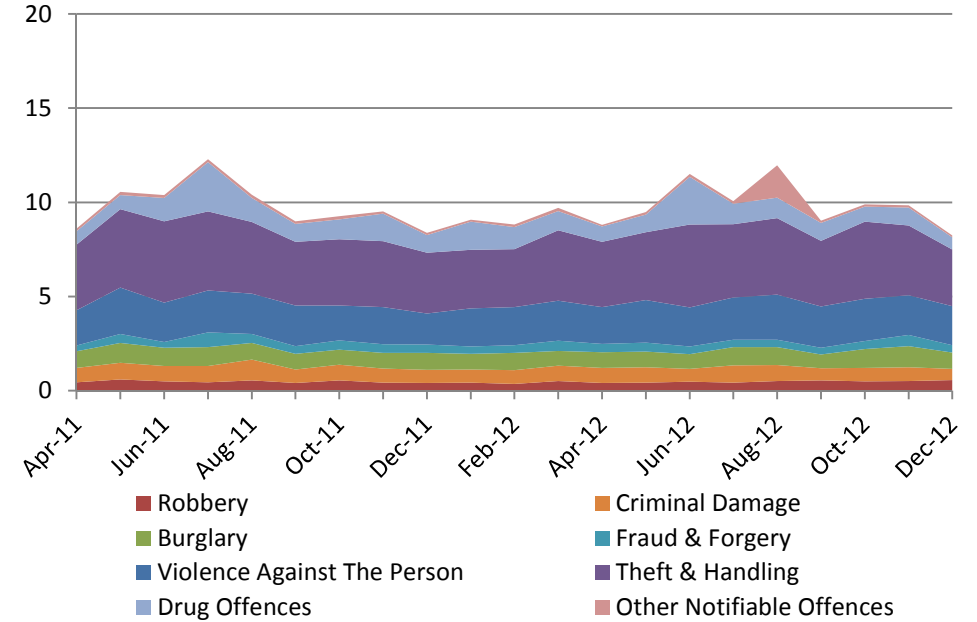


Figure 11: Blackwall & Cubitt Town Total Recorded Offences (21 month total)

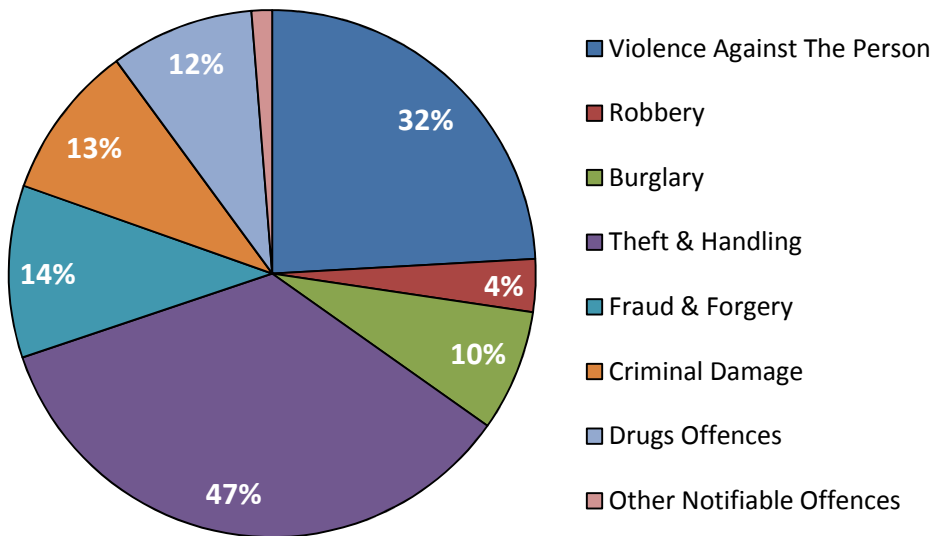
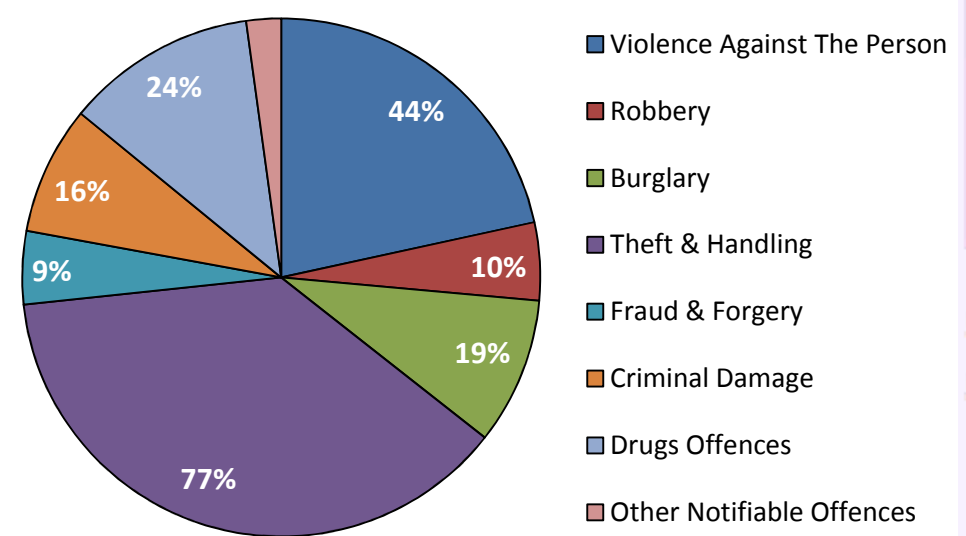


Figure 13: Tower Hamlets Total Recorded Offences (21 month total)



School Performance

Figure 14: Primary School Performance

Primary		% achieving Level 4 or above in both English and maths in				% making expected progress		Ofsted inspections	
		2012	2011	2010	2009	English	Maths	Rating	Inspection date
School	School status	2012	2011	2010	2009	English	Maths	Rating	Inspection date
Canary Wharf College	Free School - Mainstream	NA	NA	NA	NA	NA	NA	NA	NA
Cubitt Town Junior	Community School	76%	62%	79%	76%	93%	83%	Good	Jun-12
St Luke's	Voluntary Aided School	93%	79%	IA*	96%	92%	96%	Good	Jun-12
Woolmore	Community School	87%	80%	74%	63%	100%	97%	Good	Mar-10
England		79%	74%	73%	72%	89%	87%	-	-
Tower Hamlets		82%	76%	76%	74%	94%	90%	-	-

* Industrial Action. Failed to conduct National Curriculum Tests.

Figure 15: Secondary School Performance

Secondary		% achieving 5+ A*-C GCSEs (or equivalent) including English and maths GCSEs				% of pupils making expected progress		% achieving grades A*-C in English and maths GCSEs	Ofsted inspections	
		2012	2011	2010	2009	English	Maths		Rating	Inspection date
School	School status	2012	2011	2010	2009	English	Maths		Rating	Inspection date
George Green's	Voluntary Controlled School	59%	70%	55%	48%	49%	45%	55%	Satisfactory	Oct-09
England		59%	58%	55%	51%	68%	69%	59%	-	-
Tower Hamlets		62%	62%	52%	46%	72%	74%	62%	-	-

Annual Residents Survey 2011/12 – Tower Hamlets Overview

Figure 22: User Satisfaction with Services

% rating service good to excellent (base: service users)	Sample size (users)	Tower Hamlets 2011-12		London 2011-12		Tower Hamlets vs. London (p. point difference*)
		%	Change since 10/11	%	Change since 10/11	
Libraries/idea stores	678	77	1	73	-7 ↓	4
Primary education	265	70	0	70	2	1
Recycling facilities	926	68	-5 ↓	74	0	-6 ↓
Parks and open spaces	834	65	3	74	3	-9 ↓
Leisure and sports facilities	486	61	-1	57	3	4
Housing Benefit service	372	60	-2	52	0	9
Council housing	379	51	3	44	6	7
Parking Services	472	30	-3	31	-4	0
<i>Services (small sample):</i>						
Nursery education #	127	79	5	69	1	10
Secondary education #	191	64	9	63	9	1
Children's Centres #	124	64	-7	n/a	n/a	n/a

Source: TNS-BRMB, Tower Hamlets Annual Residents Survey 2011/12 & Survey of Londoners 2011/12

Notes: * All data are rounded to nearest percentage point (post calculations). Changes or differences that are statistically significant are denoted by arrows. See Appendix Table B1 for longer trends in satisfaction.

Less than 20 per cent of the sample population used these services, so sample sizes are relatively small and the confidence intervals attached to these data are larger (around ± 7 to 9 percentage points) than for other services. Services used by less than 10 per cent of the sample population are excluded altogether due to poor reliability.

Advice on interpretation of survey data

As the data are based on a survey sample they are estimates not precise measures. All survey estimates have a degree of sampling variability attached to them which needs to be borne in mind when interpreting findings, particularly for estimates based on small samples or for comparisons over time.

The concept of 'statistical significance' is used here to highlight those differences that are likely to reflect real changes over time (or between groups), as opposed to those which may be simply reflecting sampling variability. Green and red arrows are used to denote statistically significant differences.

Figure 23: Residents Top Personal Concerns

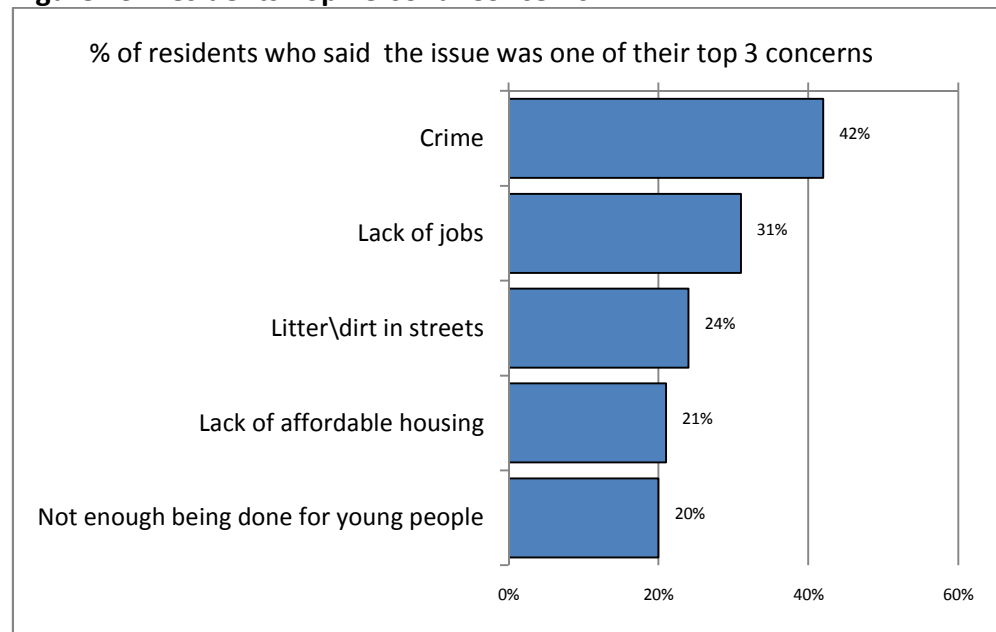
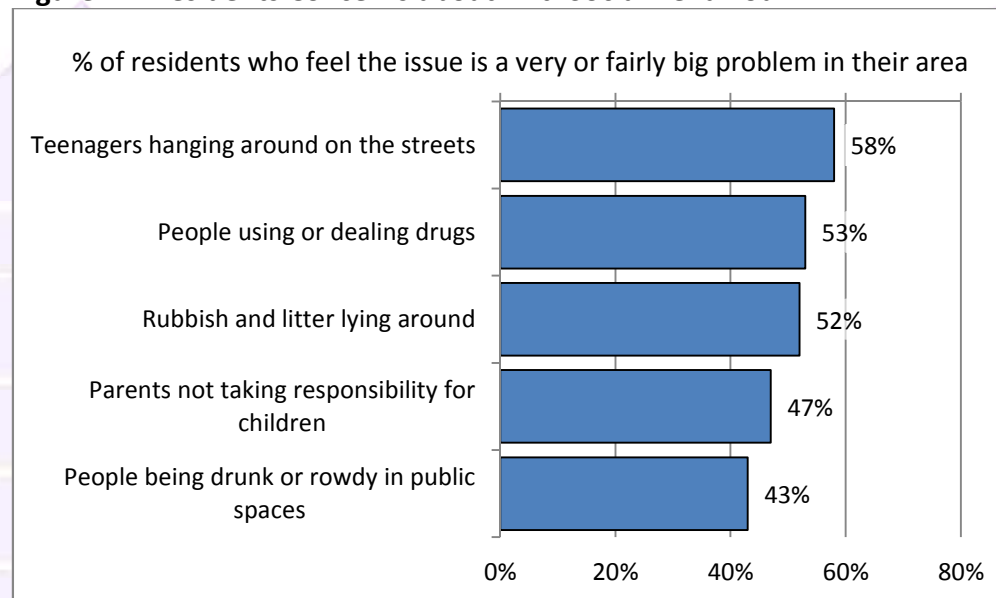
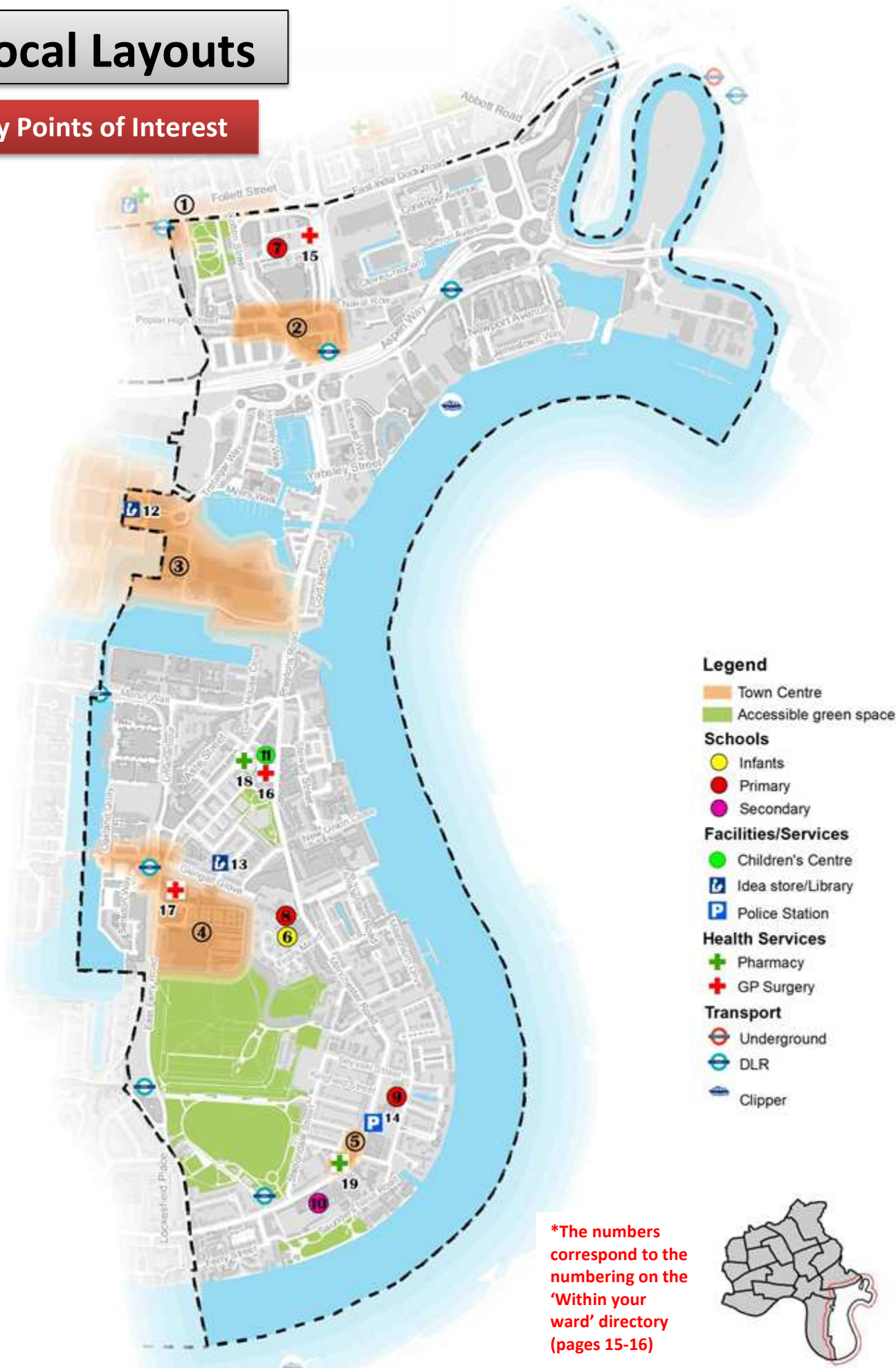


Figure 24: Residents Concerns about Anti-Social Behaviour



Local Layouts

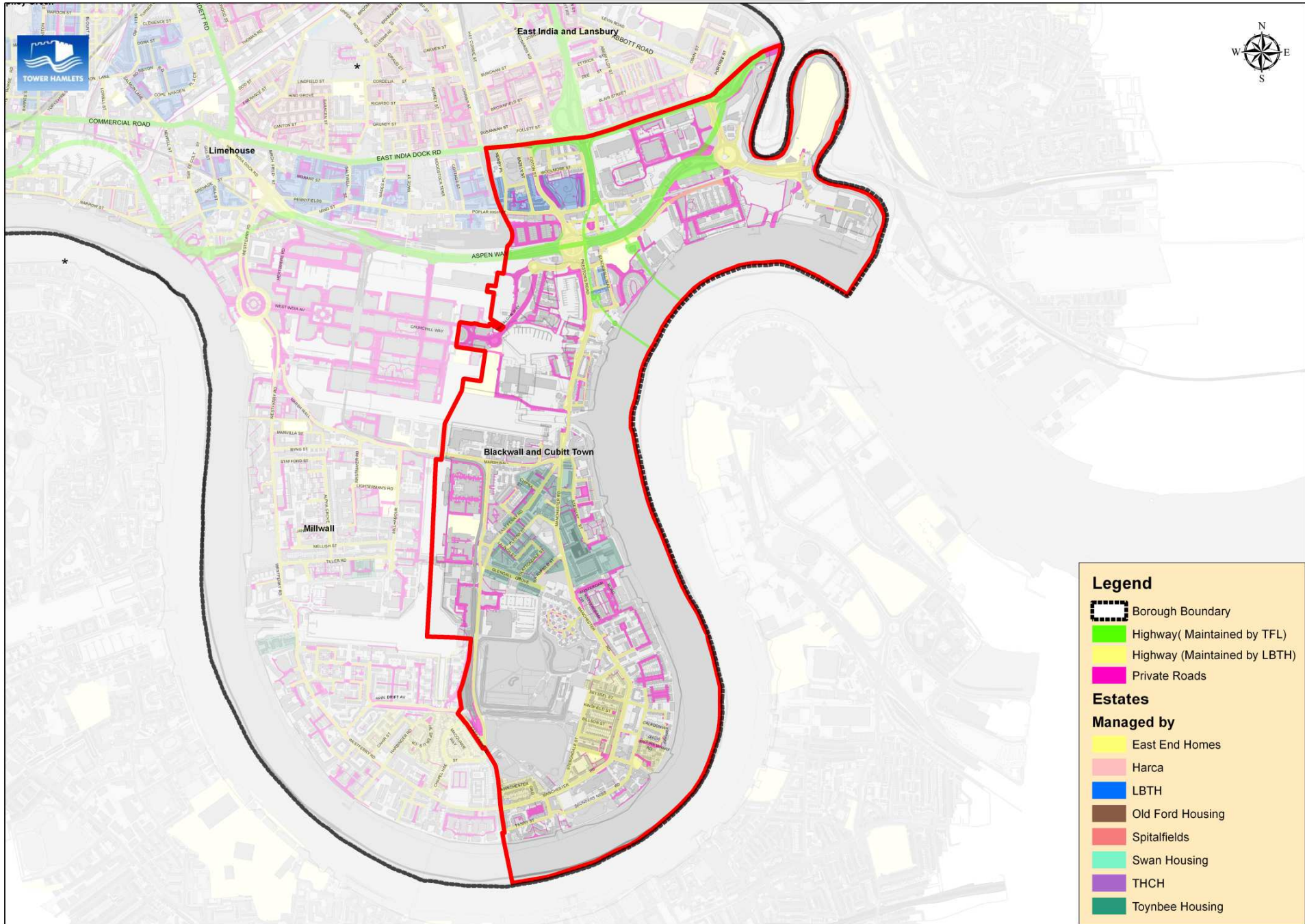
Key Points of Interest



*The numbers correspond to the numbering on the 'Within your ward' directory (pages 15-16)

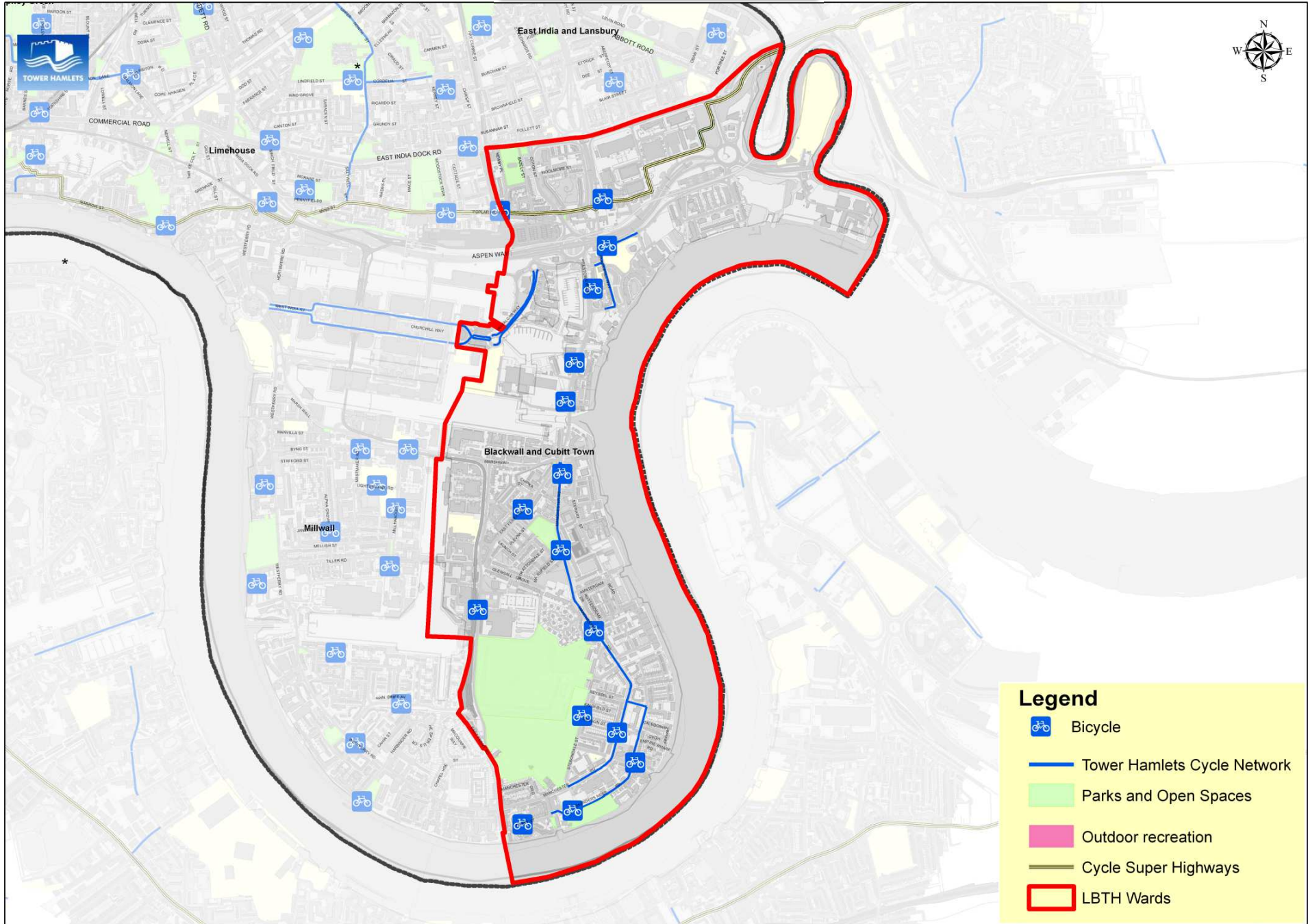


Sections and Streets



© Crown copyright and database rights 2012 Ordnance Survey, London Borough of Tower Hamlets 100015288

Leisure and Active Life



Within your ward...

Councillors			
Name	Address	Contact Numbers	E-mail
Councillor Timothy Archer	Councillor Support Office, 5 Clove Crescent, London E14 2BG	020 7364 3237	tim@tarcher.fsbusiness.co.uk
Councillor Peter Golds	Councillor Support Office, 5 Clove Crescent, London E14 2BG	020 7537 3109	clrpetergold@aol.com
Councillor Gloria Rose Thienel	Councillor Support Office, 5 Clove Crescent, London E14 2BG	020 7364 3237/ 07771 108314	cllrgrthienel@aol.com

Town and Neighbourhood Centres

Name
1. Chrisp Street District Centre
2. Poplar High Street Neighbourhood Centre
3. Canary Wharf Centre
4. Crossharbour District Centre
5. Manchester Road Neighbourhood Centre

Police Station

Name	Address	Telephone	Website
14. Isle of Dogs Police Station	160-174 Manchester Road, London E14 3BN	Emergency - always dial 999 telephone 18000 Non-emergency – 101/textphone 18001 101	http://content.met.police.uk/PoliceStation/isleofdogs

Safer Neighbourhood Team

Name	Address	Telephone	Website
Blackwall & Cubitt Town Safer Neighbourhood Team (see location 14 on map)	160-174 Manchester Road, E14 3BN	020 8721 2877	http://content.met.police.uk/Team/TowerHamlets/Blackwall

London Fire Brigade LCWF Liaison Officer

Name	Position	E-mail
Paul Hobbs	Station Manager	paul.hobbs@london-fire.gov.uk

Health Centres

Name	Address	Telephone	Website
15. All Saints Practice	12 Robin Hood Lane, London E14 9PR	020 7093 3895	www.allsaintspractice.nhs.uk
17. Island Health	145 East Ferry Road, London E14 3BQ	020 7363 1111	www.islandhealth.nhs.uk
16. Island Medical Centre	Roserton Street, London E14 3PG	020 7987 4231	www.islandmedicalcentre.com

Pharmacies

Name	Address	Telephone
Arms Chemists	259 Poplar High Street, London E14 0BE	020 7987 3493
18. Allens Pharmacy	19 Castalia Square, Isle Of Dogs, London E14 3PQ	020 7987 1362
Britannia Pharmacy	Unit 9 Asda Centre, 151 East Ferry Road, London E14 3BT	020 7538 3333
19. Cubitt Town Pharmacy	143 Manchester Road, Isle of Dogs, London E14 3DN	020 7987 1487

Public Health Locality Manager

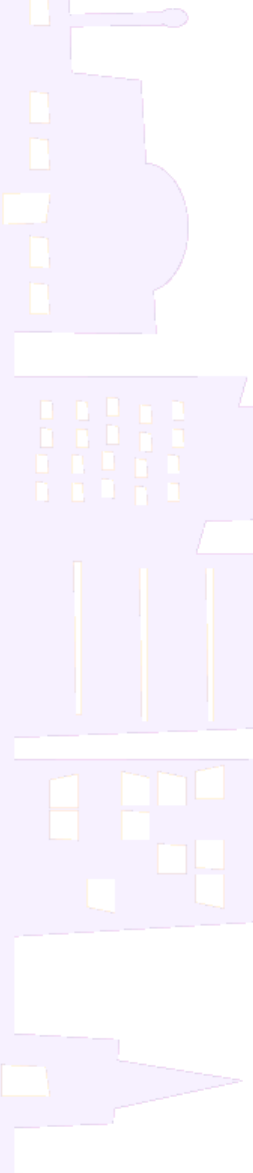
Name	Telephone	E-mail
Abigail Gilbert	020 7364 7030	abigail.gilbert@towerhamlets.gov.uk

Libraries			
Name	Address	Telephone	Email
13. Idea Store Canary Wharf	Churchill Place, London E14 5RB	020 7364 4332	www.ideastore.co.uk/en/articles/libraries_your_local_idea_store_library_idea_store_canary_wharf
14. Cubitt Town Library	Strattondale Street, London E14 3HG	020 7987 3152	ideastore@towerhamlets.gov.uk

Community Buildings for hire			
Building Name	Address	Telephone	E-mail:
St John's Community Centre	37-43 Glengall Grove, London E14 3NE	020 7987 4030	georgepye@btconnect.com
Island House Community Centre	Roserton Street, London E14 3PG	020 7531 0310	admin@island-dashhouse.org
10. George Green's Secondary School	100 Manchester Road, London E14 3DW	020 7987 6032/ 020 7537 4762/ 020 7987 6032 ext. 505	info.george-greens.tower-hamlets@lftl.net/ ckemp@georgegreens.com

Children's Centres					
Name	Address	Telephone	Telephone		
11. Isle of Dogs Children's Centre	Millwall Park, Stebondale Street, London E14 3BX		020 7364 1179		
Primary Schools					
Name	Address	Telephone	Website		
9. St. Luke's CofE 6 & 8. Cubitt Town Infant & Junior	Saunders Ness Road, London E14 3EB	020 7987 1753	www.cubitttownjuniorschool.co.uk		
7. Woolmore Primary	Glengall Grove, London E14 3NE Woolmore Street, London E14 0EW	020 7987 3373 020 7987 2778	www.woolmore.towerhamlets.sch.uk		
Canary Wharf College	197 East Ferry Road, London E14 3BA	020 7515 2328	www.canarywharfcollege.co.uk		
Parents' Forums					
Name	Contact	Telephone	Day	Time	Frequency
Isle of Dogs Children's Centre (see location 11 on map)	Sarah MCSweeney	020 7364 1197	Tuesday	10.00-11.30am	Monthly

Secondary Schools			
Name	Address	Telephone	Website
George Green's School (see location 10 on map)	100 Manchester Road, London E14 3DW	020 7987 6032	www.georgegreens.com
Youth & Connexions Services			
Name	Address	Telephone	E-mail
Cubitt Town Youth Movement	Samuda Community Centre, Stewart Street, London E14 3ES		
George Green's School (see location 10 on map)	George Green School, 100 Manchester Road, London E14 3DW	020 7987 6032 ext.402/488.	info.george-greens.tower-hamlets@lftl.net/ ckemp@georgegreens.com



In your borough...

Tower Hamlets Public Health		
Service	Telephone	Services provided
Adult Social Care	020 7364 5005	Information and advice: learning and physical disabilities, older people, support for carers etc.
Healthline	020 7364 5016	Find a GP or other health service in Tower Hamlets

Safer Communities

Service	Telephone	Email
Domestic Violence/Hate Crime team	0800 279 5434/ 0800 138 0521	domesticviolence@towerhamlets.gov.uk

Safer Transport

Service	Address	Telephone	Website
Tower Hamlets Safer Transport Team	Tower Hamlets Team, 201-205 Bow Road, London E3 2SJ	077 8769 7872/ 020 7275 4308	http://www.met.police.uk/teams/transportne/towerhamlets/index.php

Employment and Lifelong Learning

Service	Contact details	Website
Job Centre Plus (East London)	Telephone: 0845 6060 234	http://www.dwp.gov.uk/about-dwp/customer-delivery/jobcentre-plus/
Tower Hamlets College	Telephone: 020 7510 7510 Email: advice@tower.ac.uk	www.tower.ac.uk
Idea Store Learning	Contact form: http://www.ideastore.co.uk/en/forms/contact/contact_us	http://www.ideastore.co.uk/
Skillsmatch	Telephone: 020 7364 3727	www.towerhamlets.gov.uk/skillsmatch

Sports and Leisure

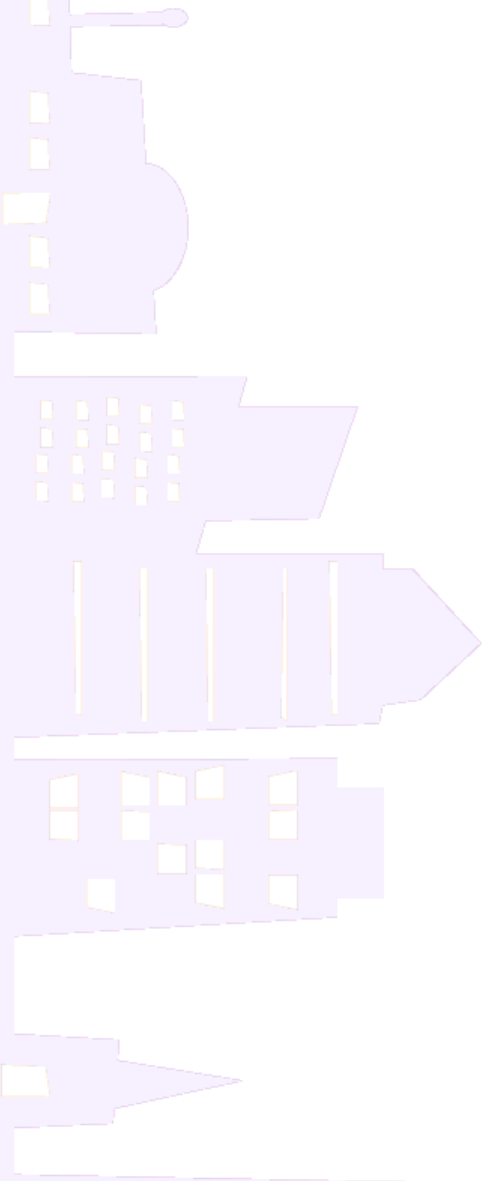
Service/Centre	Address	Telephone	Email/Website
Sports development team	Mulberry Place, PO Box 55739, 5 Clove Crescent, London E14 1BY	020 7364 2433	sports@towerhamlets.gov.uk
John Orwell Sports Centre	Tench Street, Wapping, London E1W 2QD	020 7488 9421	http://www.better.org.uk/leisure/john-orwell-sports-centre
Mile End Park Leisure Centre and Stadium	190 Burdett Road, Mile End, London E3 4HL	020 8709 4420	http://www.better.org.uk/leisure/mile-end-park-leisure-centre
St. George's Leisure Centre	221 The Highway, London E1W 3BP	020 7709 9714	http://www.better.org.uk/leisure/st-george-s-leisure-centre
Tiller Leisure Centre	Tiller Road, Docklands, London E14 8PX	020 7987 5211	http://www.better.org.uk/leisure/tiller-leisure-centre
Whitechapel Sports Centre	55 Durward Street, Whitechapel, London E1 5BA	020 7247 7538	http://www.better.org.uk/leisure/whitechapel-sports-centre
York Hall Leisure Centre	5 Old Ford Road, Bethnal Green, London E2 9PJ	020 8980 2243	http://www.better.org.uk/leisure/york-hall-leisure-centre

Council Hotlines		
Service	Telephone	Services provided
General enquiries	020 7364 5020	Enquiries about all Council services (e.g. location and opening times)
Business rates	020 7364 5010	Information and advice
Licensing	020 7364 5008	Information and advice
Streetline	020 7364 5004	Commercial waste service, dumped rubbish, Enviro-Champions, fly-posting, graffiti, litter and litter bins, pavements, potholes, recycling, rubbish collection, street cleaning & street lighting.
Trading standards	020 7364 5008	Information and advice
Planning & development	020 7364 5009	Information on all planning issues including applications, building work, urban design, conservation
Council tax advice	020 7364 5002	Information and advice
Housing benefits	020 7364 5001	Enquiries and general advice
Parking services	020 7364 5003	Information; paying/appealing fines; reporting abandoned vehicles and renewing permits
Electoral services	020 7364 0872	Information; registration (new and postal voting)
Switchboard	020 7364 5000	Use this number if you know the name of the person you wish to speak to
Out of hours	020 7364 7070	For urgent issues out of hours

Housing

Organisation	Telephone	Email	Website
Tower Hamlets Homes	General: 020 7364 5015	General enquiries: contactus@towerhamletshomes.org.uk	www.towerhamletshomes.org.uk
	Repairs: 0800 376 1637 (free from landlines) or 020 7364 7070	Rents: rents@towerhamletshomes.org.uk	
	0800 376 1638 Bengali/Sylheti (free from landlines) or 020 7364 5151		

For a list of all housing providers operating within the borough, including contact details and web links, visit:
http://www.towerhamlets.gov.uk/gsl/101-150/150_housing_associations.aspx



Data Sources

Census Data

Population
Age Structure
Ethnicity
Religion
Household Composition
Health & Unpaid Care

Census Table Reference

QS103EW
QS103EW
KS201EW
KS209EW
QS112EW & QS113EW
KS301EW

Census data available from:

<http://www.ons.gov.uk/ons/guide-method/census/2011/index.html>

Other Health Data (standardised admissions ratios) from **Public Health England**:

<http://longerlives.phe.org.uk>

Deprivation Data

Indices of Multiple Deprivation 2010:

<https://www.gov.uk/government/publications/english-indices-of-deprivation-2010>

GLA Ward Deprivation Data:

<http://data.london.gov.uk/datastore/package/indices-deprivation-2010>

Crime Data

LSOA Crime Statistics from the **GLA Datastore**:

<http://data.london.gov.uk/taxonomy/organisations/metropolitan-police>

Schools Performance Data

Ofsted Inspection Reports:

<http://www.ofsted.gov.uk/inspection-reports/find-inspection-report>

Department for Education Performance Tables:

http://www.education.gov.uk/schools/performance/geo/la211_all.html

Annual Residents Survey

Annual Residents Survey 2011/12 Summary:

http://www.towerhamlets.gov.uk/lgs/851-900/867_consultation/customer_satisfaction_surveys.asp

ROAD AND PAVEMENT MAINTENANCE

The council is responsible for the maintenance of roads, including pavements and footways.

The exception to this is private streets, unless they have been adopted (when council takes ownership of a 'private street') by the council.

Please let us know about any problems which you feel need to be addressed. You can take a photo of the problem and upload it using the reporting form found on the following webpage: www.towerhamlets.gov.uk/igs/501-550/537_pavement_maintenance/clean_clear_footpaths.aspx

Alternatively, you can call us on **020 7364 5004**, or send an email through to general.enquiries@towerhamlets.gov.uk

Private Streets

A private street is a street that is not maintained by the council. The responsibility for private streets lies with the street owners, usually the people who live on the street.

How do I report a private street that has unsafe paving?

- You need to report the problem directly to the owner (usually the frontage).
- If the problem is thought to be a 'danger' (for example a deep hole in the road suddenly appearing), please contact us. The council will arrange to make it safe by placing barriers or road closures around the hazard.
- However, permanent repairs still have to be carried out by the owner/s.

How do I report a problem with gullies and drains on a private street?

If thought to be dangerous (for example a missing gully lid), please contact us (using the details above). The council will arrange to make the problem safe. The owner will then need to make permanent repairs.

Transport for London Roads

Transport for London is responsible for the Transport for London Road Network (TLRN), known as 'red routes' (because of the painted red lines) and all trunk roads.

These can be found on their website on the following webpage:

www.tfl.gov.uk/roadusers/redroutes/953.aspx

You can report a problem, a road defect (such as a pothole) or issues with traffic lights and street lighting on all red routes and trunk roads in London (including those which flow through Tower Hamlets), using 'Report IT', TfL's online reporting system. This can be accessed via the following webpage:

www.tfl.gov.uk/roadusers/reportastreetfault/20568.aspx

Alternatively, you may contact them by telephone on:

0845 305 1234



CLEANING

Waste Collection

All refuse and recycling are collected via sacks from directly outside your door on the designated day(s). Refuse and recycling must be kept inside the property at all other times.

You can download the 'domestic refuse collection timetable' via the following webpage:

www.towerhamlets.gov.uk/igsl/501-550/533_recycling_and_waste_at_home/waste_collections.aspx

Please inform us of any missed collections by contacting us on **020 7364 5004** or sending an email to general.enquiries@towerhamlets.gov.uk

Fly-tipping

We keep the streets safer and cleaner by removing tips of rubbish that have been dumped on public land, roads and pavements. We aim remove reported fly-tips by the end of the next working day. However, if the tip is very large or contains hazardous materials, this has to be reported to the back office for investigation. If so, this may take a little longer to deal with.

Fly-tips on private land should be dealt with by the land owner.

You can report incidents of fly-tips using the appropriate online form which can be accessed via the following webpage:

www.towerhamlets.gov.uk/igsl/551-600/587_flytipping_enforcement_an.aspx

Alternatively, you can call us on **020 7364 5004**, or send an email through to general.enquiries@towerhamlets.gov.uk



PARKS AND OPEN SPACES

The council maintains a wide variety of landscapes in parks and other green spaces. Maintenance includes keeping the grass cut, pruning shrubs, roses and hedges and maintaining flower beds. The parks and open space service also carry out cleaning operations to empty bins and remove litter.

Tower Hamlets parks also offer a great variety of opportunities for a more active lifestyle. The sports and play facilities are maintained by the council and can be found under each park listed in the Tower Hamlets A-Z Parks guide: www.towerhamlets.gov.uk/igs/451-500/461_parks/a_-_z_of_parks.aspx

Tower Hamlets Council **do not** cut grass or maintain green space that is:

- privately owned
- on properties/estates owned by bodies other than the council
- located on Red Routes and trunk roads (these are the responsibility of Transport for London)

We are keen to continue improving our landscaping services, so if you feel any areas could be enhanced or if you have any comments please contact us using the details below.

General

020 8533 2057 (Victoria Park); **020 7364 5004** (all other parks)

parks@towerhamlets.gov.uk

Community Park Rangers

Mile End Park:

020 7093 2253; 07951 321 051

Victoria Park:

020 8985 1957



NOISE

The Council can help with most problems, complaints or enquiries concerning residential and commercial noise.

Environmental Protection officers have powers under the “Statutory Nuisance” provisions of the Environmental Protection Act 1990 to investigate and enforce in matters such as:

- DIY, amplified music, musical instruments, domestic appliances, leisure activities, hobbies, parties
- car alarms (including breaking into vehicles to disarm the alarm)
- burglar alarms (including entering buildings to switch off the alarm)
- street noise, for example, stationary vehicles with engines running, refrigerator units, car repairs, audio systems in stationary vehicles

The investigating officer will assess whether the alleged perpetrator is causing unacceptable disturbance to their neighbours: Where the Council finds the noise level to be deemed a “Statutory Nuisance”, we can take action (i.e. serve a Notice) to require the nuisance to be abated. If the noise is from a portable electronic source (e.g. hi-fi, radio), we can obtain a Warrant to seize this equipment if the problem continues after Notice has been served. The Council can also prosecute for breach of Notice.

Some issues fall outside the scope of “Statutory Nuisance” which means the Environmental Protection Service does not have powers to deal with them. These include aircraft noise, rowdy behaviour in the street, everyday domestic noise from your neighbour (e.g. people moving around and talking, noise from flushing toilets, children running around).

Construction sites are required to comply with the Council’s Code of Construction Practice, which specifies the permitted hours for noisy works (0800-1800 Monday to Friday; 0800-1300 Saturday – not at all on Sunday or Bank Holiday). Failure to comply with these times or emitting excessive noise could lead to the Environmental Protection Service serving notice under the Control of Pollution Act 1974 and taking action through the courts.



Proactive work: We can also carry out noise assessments and monitor major construction sites to protect the wellbeing of the borough's residents and businesses. Our proactive work also includes commenting on Planning and Licensing applications. Tower Hamlets Council actively works with residents, businesses, developers and regional partners to control levels of noise.

Licensing

Licenses for the performance of music in a public place (including an open space) within the Borough of Tower Hamlets, are issued by the:

Licensing and Trading Standards Section

Tel: 020 7364 5008

Opening hours: 9am to 5pm

CONTACT

Environmental Health
Environmental Protection
Mulberry Place
PO Box 55739
5 Clove Crescent
London E14 2BG

Office Tel: 020 7364 5008

Opening hours: Monday to Friday, 9am -5pm

Out of Hours Tel: 020 7364 7070

Service hours: Thursday to Sunday, 8pm to 3.30am

Email: environmentalhealth@towerhamlets.gov.uk

Further details and updates on the Council's noise pollution service can be found on the following webpage:

www.towerhamlets.gov.uk/lgsi/401-450/412_noise_pollution.aspx#what

If your call relates to a public disorder issue in the street you should continue to use the Metropolitan Police Service on **101**.



TOWER HAMLETS ENFORCEMENT OFFICERS

We know that crime and anti-social behaviour are things that worry you; Tower Hamlets Enforcement Officers (THEOs) are a uniformed civil enforcement team who provide a local presence to reassure and respond to your concerns.

THEOs work in partnership with the police who have accredited them with powers to tackle anti-social behaviour and environmental crime under the Community Safety Accreditation Scheme. They are supported by a network of services including Environmental Health, Trading Standards, Licensing and Markets.

Whatever the challenge, we'll help you solve it.

The THEOs focus on:

- Anti-social behaviour concerns
- Street drinking disorder
- Dog fouling
- Littering, graffiti and fly-posting
- Illegal street trading
- Noise

You should contact the police to:

- Deal with public disorder & violent situations
- Tackle drug dealing and drug taking
- Respond to and report crime
- Address persistent anti-social behaviour

Contact

Visit us online at:

www.towerhamlets.gov.uk/communitysafety

Find out more or fill in an online form and tell us about the issue you need our help solving.

Speak to your local THEO – working with local police and other council teams in your area, our friendly and approachable officers are there to help while out on patrol.

Contact the police on 999 in an emergency – when a crime is happening, someone suspected of a crime is in the area, someone is injured, being threatened or in danger.

Contact the police on 101 in a non-emergency– to report a crime or ASB that has happened, seek advice or speak to your local people.



HOW THEOS WORK IN THE NEIGHBOURHOODS

STOPPING ILLEGAL STREET TRADING

An officer out patrolling Bethnal Green Gardens noticed a woman acting suspiciously with a large suitcase. The officer spoke to the woman and discovered that the case contained 900 packets of counterfeit cigarettes. The standards were alerted to the case and the woman now faces prosecution at court with a substantial fine.

ENFORCING AGAINST ALCOHOL-RELATED ANTI-SOCIAL BEHAVIOUR

Two THEOS out patrolling a Drinking Control Zone in Whitechapel Road were obstructed by a drunken man. The officers asked him to stop drinking and hand over the alcohol as he was acting anti-socially in a Drinking Control Zone. Unfortunately he refused to do so and walked away hurling verbal abuse at the officers. The officers then alerted the police to the incident and tracked him through the area to ensure he didn't cause himself or anyone else any harm. He is being prosecuted for failing to comply with officers in a Drinking Control Zone and faces a fine of up to £500.

TACKLING CRIME AND ENVIRONMENTAL CRIME

Officers carrying out after school safety patrols in bow witnessed a man fly-posting banners to railings in Campbell Road. The officers approached and after he gave to obtain his details and eventually them several false names they were duly gained his true identity which was verified by the police. He is now being prosecuted and faces being fined at court.

TACKLING DRUGS

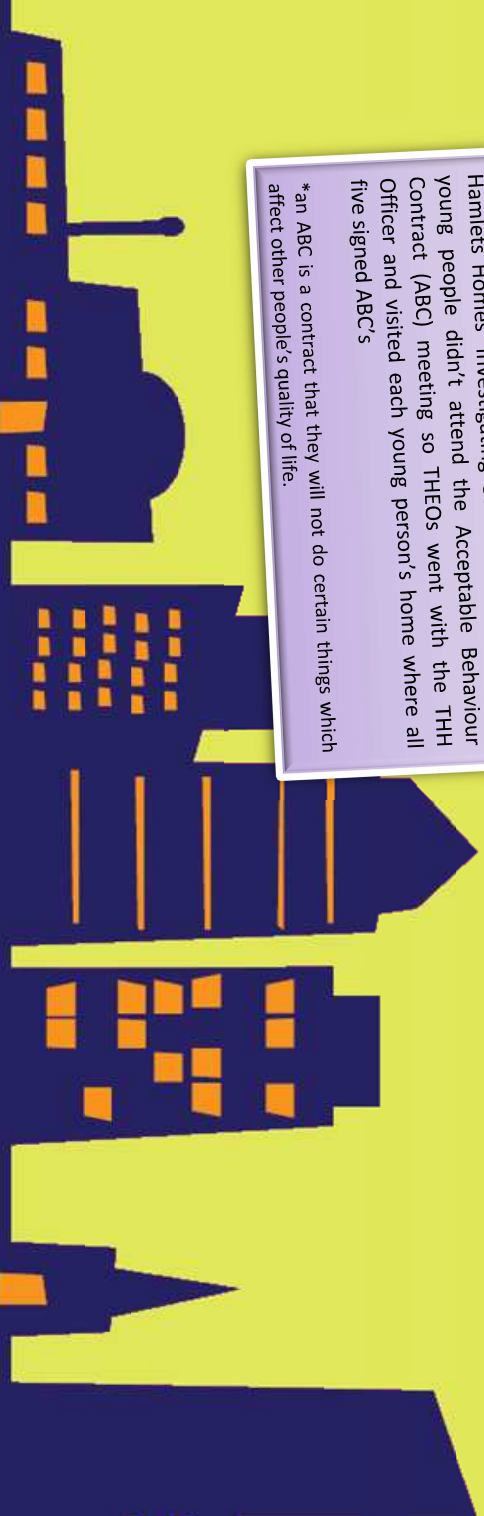
When a THEO patrolling Whitechapel witnessed a man taking drugs in a telephone box near Percy Ingles, he approached the police. The police spoke to him and alerted the police. The police arrived, arrested him and took him to the police station for a drug search.

THEOS often carry out joint patrols with Drug Outreach Workers who will approach street drinkers and drug users to inform them of available support. They offer to refer them in specialist services that can assist them in making the first steps to recovery.

ADDRESSING YOUTH DISORDER

Following complaints from residents of Welstead House that a group of youths were causing anti-social behaviour in the area, the THEOS patrolled the area to support Tower Hamlets Homes in tackling the issues. Over several patrols, THEOS managed to identify all five young people causing the problems and passed their details onto Tower Hamlets Homes' Investigating Officer. Unfortunately the young people didn't attend the Acceptable Behaviour Contract (ABC) meeting so THEOS went with the THH Officer and visited each young person's home where all five signed ABC's

*an ABC is a contract that they will not do certain things which affect other people's quality of life.



LEISURE CENTRES AND FACILITIES

Leisure Centres

There are seven leisure centres in Tower Hamlets offering a wide range of sporting facilities and activities. Tower Hamlets work in partnership with Greenwich Leisure Limited who manage the leisure centres on the council's behalf. For a full list of the leisure centres in the borough please visit:
http://www.towerhamlets.gov.uk/lgsi/601-650/tower_hamlets_leisure_centres.aspx

Swimming

For information on the range of swimming pools and swimming offers please visit:
http://www.towerhamlets.gov.uk/lgsi/601-650/tower_hamlets_leisure_centres/swimming.aspx

Leisure and Sports Passes

There are a range of membership options available for leisure centres in Tower Hamlets. Please see the GLL website for a full list of membership options and details of how to join a leisure centre:
http://www.better.org.uk/memberships_leisure

Parks

In addition to the leisure centres there are numerous grass and hard court areas to do sports and physical activities located within the Borough's parks. For most of these facilities, usage is free and there is no need to book. Tennis courts however, are operated on a pay and play basis. A full list of parks and open space, including the facilities within each one, can be viewed on the following webpage:
http://www.towerhamlets.gov.uk/lgsi/451-500/461_parks/a_-_z_of_parks.aspx

Pitch and Court Bookings

Tower Hamlets hosts numerous sports pitches and courts available for booking and hire to sports clubs, individuals, schools and/or community organisations. They can be booked by accessing the links on the following webpage:
http://www.towerhamlets.gov.uk/lgsi/601-650/tower_hamlets_leisure_centres/pitch_and_court_booking.aspx

Get Active London

You can find information on various sports and physical activity in Tower Hamlets on this London wide website, which includes information on facilities as well as activities. Find your local Sports activity, club or venue by visiting:
<http://www.getactivelondon.com/>



SPORTS PROGRAMMES AND EVENTS

Throughout the year, the sports development team plan, coordinate and manage various programmes to engage residents and encourage participation in physical activity.

Half-term and Summer Sports Programmes

The council's sports development team hold sports festivals throughout the year, an initiative to encourage the community to get active. The aim is to promote local sports clubs, increase participation in sports, raise awareness of keeping healthy and engage with the local community. During the Whitsun half term, we provide sports courses and sessions for 8 – 16 year olds. During the summer holidays we provide sports activities in local parks and other facilities around the Borough.

You can find out more and register on the sports page of the council's website:

http://www.towerhamlets.gov.uk/ignl/leisure_and_culture/sport_and_physical_activity.aspx

Contact

Email: Shenneth.Brereton@towerhamlets.gov.uk

Tel: 020 7364 2437

Young @ Heart

Come along, make friends and try a new activity at the Young @ Heart club – a weekly programme of activities to increase participation in sports, physical activities and a healthier lifestyle for the over 50s.

The programme runs at the centres below between 10am and 1pm, with an evening session from 5.30pm to 8.30pm:

- Whitechapel Sports Centre (Mondays)
- Mile End Park Leisure Centre (Tuesdays)
- York Hall Leisure Centre (Wednesdays)
- John Orwell Sports Centre & St George's Leisure Centre (Thursdays)
- Tiller Leisure Centre (Fridays)

You can download the 2013 programme by visiting the following webpage:

http://www.towerhamlets.gov.uk/ignl/601-650/643_sport_programmes_sessions/young_at_heart.aspx



Sports4women

Sport4women is a Sport England project delivered by Better and the London Borough of Tower Hamlets.

The aim of the project is to increase the number of women 16 years and over in Tower Hamlets taking part in sport and physical activity sessions.

To find out further information, including a timetable, please visit:

http://www.towerhamlets.gov.uk/lgsi/601-650/643_sport_programmes_sessions/sport4women.aspx

Tennis

You can book a court; sign up for adult tennis courses; sign your children up to Junior Community Tennis sessions and Junior Holiday Camps as well as take part in a range of other tennis activities through **Tower**

Hamlets Tennis by visiting:

www.towerhamletstennis.org.uk

Girls Football Coaching

Launched in November 2012, this hugely successful coaching scheme for 7-11year old girls. Delivered in partnership with Sportslink – a local community sports organisation with female team of qualified coaches and auxiliary staff. The project aims are to encourage participation and increase the number of girls enjoying playing the game and keeping fit, support community cohesion and create a platform for entry level girl football players. Sessions take place weekly and are free.

For more information email Derek.Bennett@towerhamlets.gov.uk or visit:

http://www.towerhamlets.gov.uk/news_events/events/girls_football_scheme.aspx

Tower Hamlets Football in the Community - Helvecia Futsal Coaching Project

Tower Hamlets Sports Development Team have secured the services of Helvecia Futsal Club, The 5 times champions of England Futsal league to deliver coaching to young people aged 6 -16 years old as part of its Football in the Community programme. Take part if you (or your young one) want to learn the game that brought the world Messi, Ronaldo, Neymar and the legend Pele. Sessions take place at Mile End Stadium mini pitches each Friday from 6pm-9pm.

For more information contact Derek Bennett, Senior Football Development Officer, on 020 7364 2681 or email derek.bennett@towerhamlets.gov.uk or visit

http://www.towerhamlets.gov.uk/news_events/events/introducing_futsal_to_tower_ha.aspx

Contact

For information on sports programmes and events:

Tel: 020 7364 2433/ 2435/ 2436/ 2437

Email: sports@towerhamlets.gov.uk

