

# Spitalfields Neighbourhood Planning Area

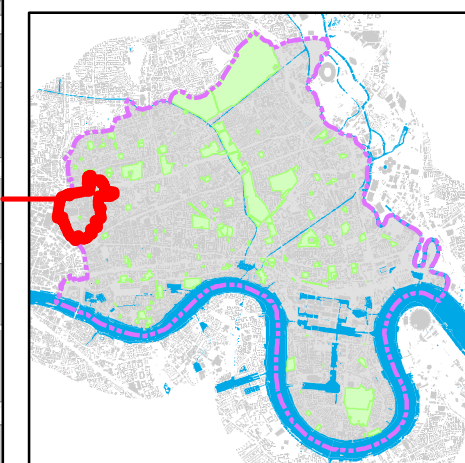


GIS for Place Directorate

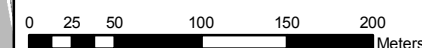
## Spitalfields Neighbourhood Planning Area London Borough of Tower Hamlets

**LEGEND**

- Neighbourhood Planning Area
- Borough Boundary



Scale @ A4: 4,400



Created by: GIS Team  
LONDON BOROUGH OF TOWER HAMLETS  
Date: 13/04/2017

