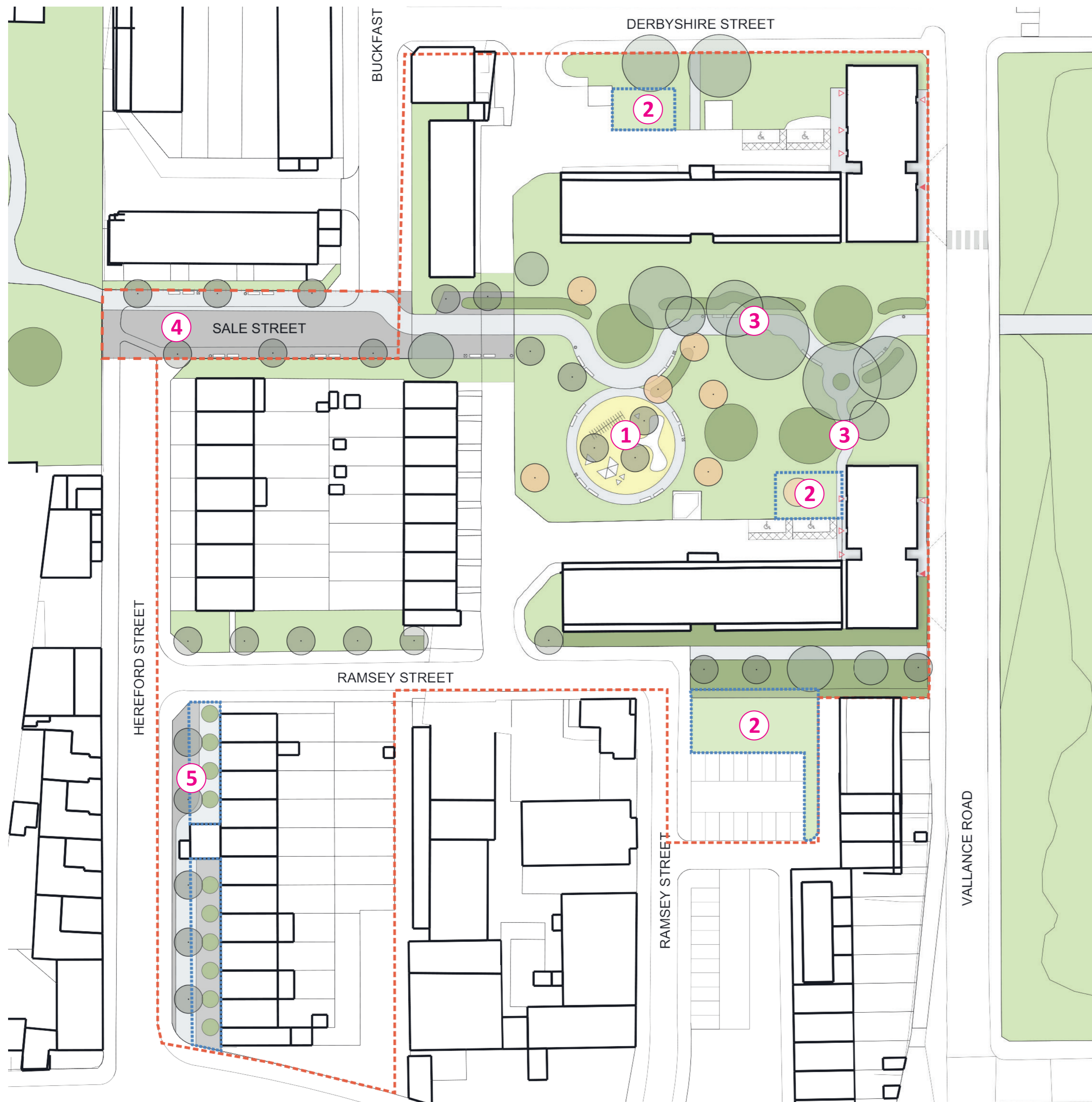
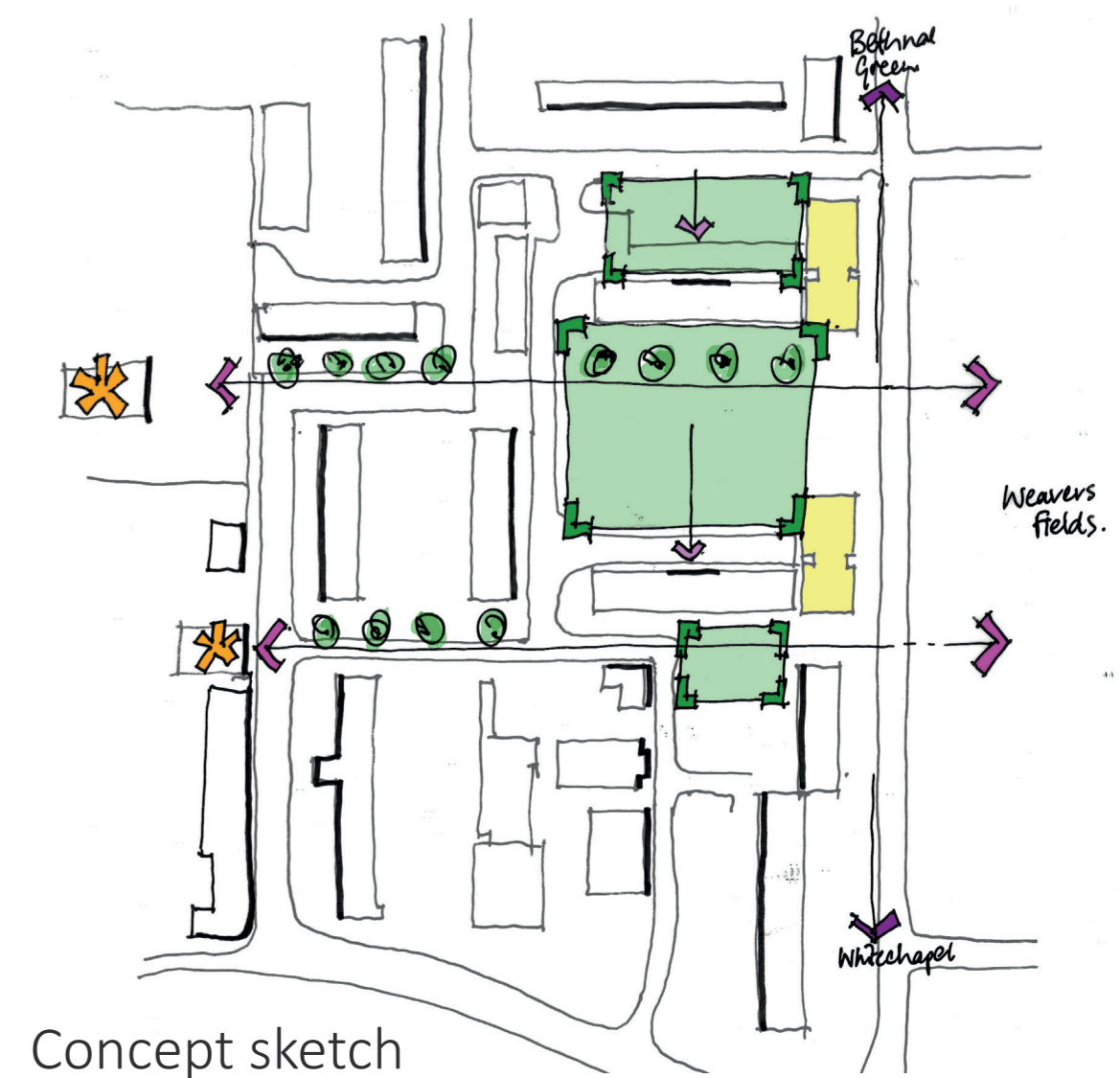


# Tower Hamlets Council - Hereford Estate Draft Landscaping

## Overall Draft Landscape Strategy & Concept

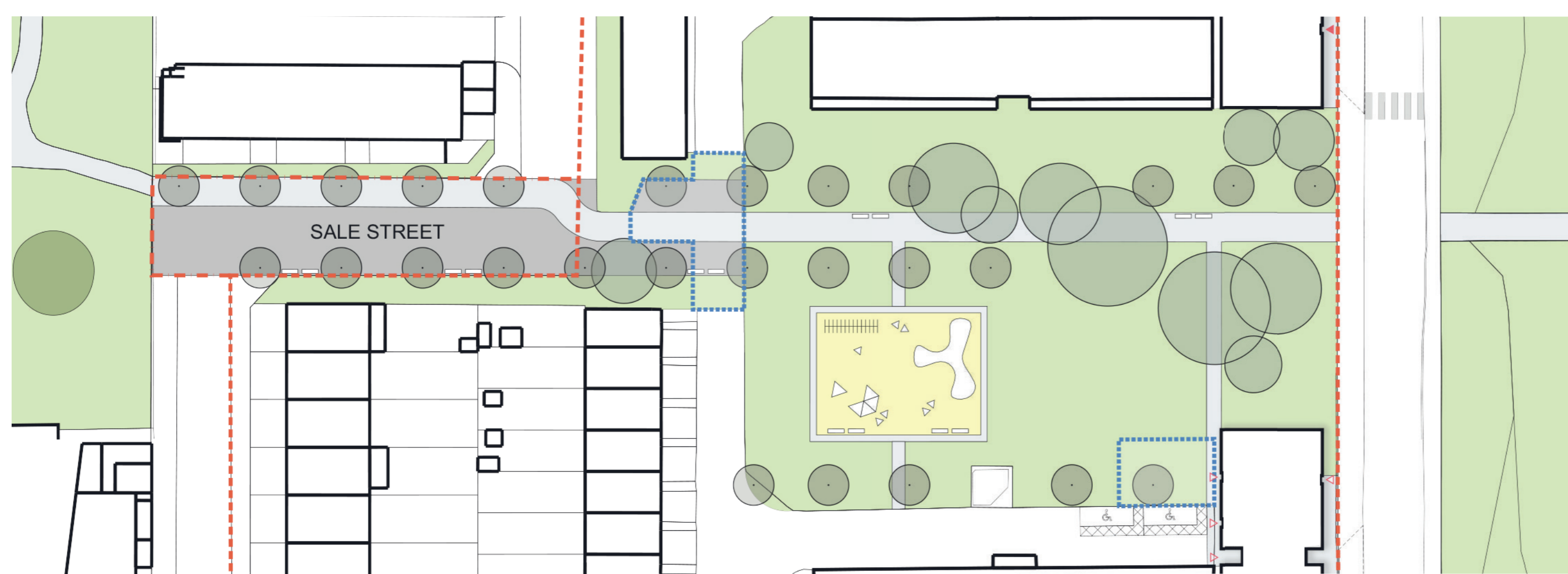


General Arrangement Plan- Option 1

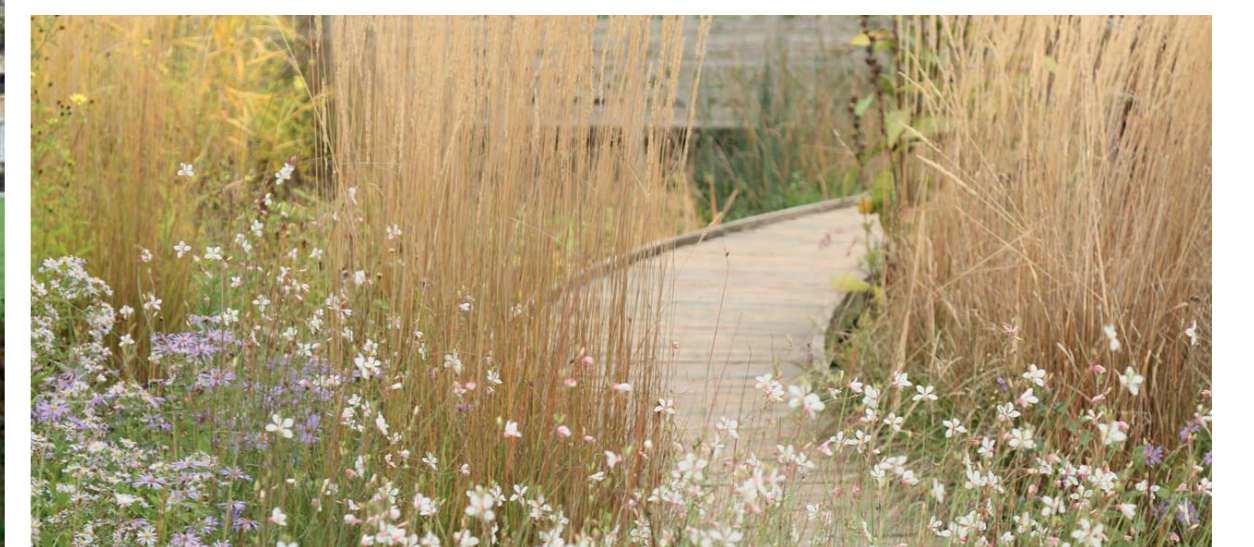


Concept sketch

- Info**
- Site boundary
  - Secondary boundary to include potential improvements to Sale Street
  - Gain of public open space
  - Building access points
  - Main entrances
- Softworks**
- Proposed Fruit Trees 7 no.
  - Proposed Trees 27 no.
  - Existing Trees
  - Perennial mix
  - Short grass/lawn
- Hardworks**
- Paved path and surfaces
  - Proposed shared space 1326 sqm
  - Proposed flush layby
  - Seating
  - Mixed-age playspace 344.7 sqm Indicative layout
  - Proposed pedestrian crossing
  - Conversion of existing parking to accessible bays



General Arrangement Plan- Option 2



# Tower Hamlets Council - Hereford Estate Draft Landscaping

## Details of Draft Improvements

### KEY INTERVENTIONS

- **Playspace**- the existing playground can be improved through planting, a change in surfaces and additional play equipment for a wider age range.
- **Gain of public space**- to mitigate the loss of existing public open space by the building footprint, a series of spaces are to be converted to green space. Pram sheds and garages would be converted to landscaped areas.
- **Existing and new planting**- the use of carefully selected species add diversity and visual interest. All planting to require minimal maintenance regimes.
- **Pedestrian connections**- Two pedestrian routes will connect from East to West.
  1. A main pedestrian path connects Sale Street to Weaver Fields. The path meanders around existing trees and vegetation to create a small neighbourhood garden for the estate.
  2. To the South, new trees and perennials are planted along Ramsey Street and a small pedestrian path to Vallance Road.

