

NEW COUNCIL HOMES FOR JUBILEE STREET

WHAT IS GOING ON AND WHY

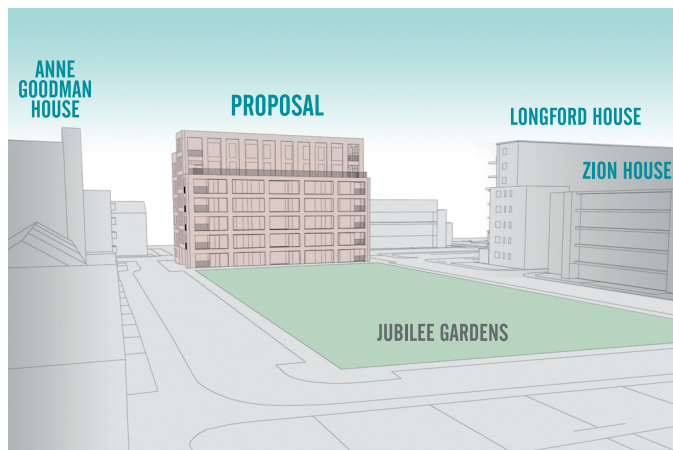
Tower Hamlets Council wants to build more homes for local people and a number of council-owned sites are being brought forward for new council homes, including the old car park between Anne Goodman House and Longford House.

Almost 20,000 local people are waiting desperately for an affordable place to live but there's very little unoccupied council land in Tower Hamlets. Building on 'in-fill' sites is one way of meeting this need.

In January we showed you proposals to build a six-to-seven storey block of 24 council homes on the under-used space – some earmarked for people with disabilities.

This is one of four schemes which start our in-fill development in areas across the borough. The council is exploring similar schemes in other locations too. All new homes for rent that we build will go to local people. This is part of the council's wider commitment to deliver 1000 new homes in Tower Hamlets over the next four years.

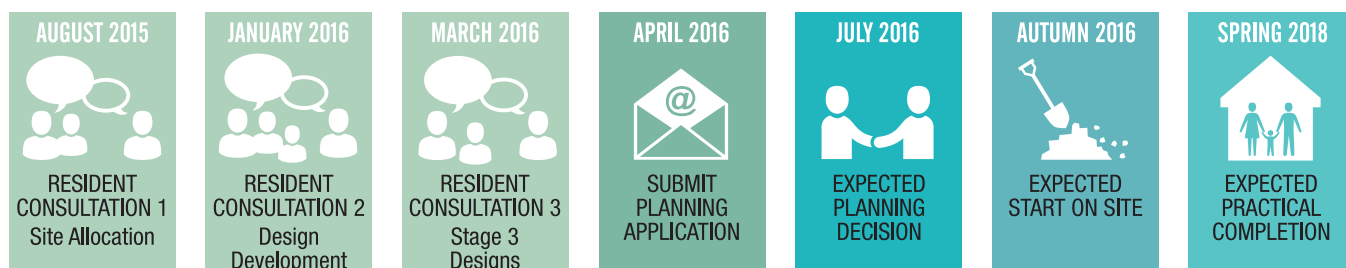
Your views on what happens on your estate matter. We held two events at 2 Jarman House on Jubilee Street to unveil their design plans and hear back from you. In all, 16 brave residents ventured into the January winter cold. They came, they saw and they spoke out.



YOUR MAYOR SPEAKS OUT ON HOUSING

“We face considerable challenges in delivering really affordable homes for local people. These include the very high local cost of housing, a chronic shortage of stock and a growing population. We welcome the significant regeneration taking place in the borough and the role this plays in transforming Tower Hamlets. However, we must not lose sight of the fact that for increasing numbers of people who grew up in the borough, the possibility of renting or buying a local home has been very difficult.”

John Biggs
Mayor of Tower Hamlets



YOU SAID...

Those people who came along to 2 Jarman House could see drawings of the new block for themselves. Generally these were well received.

However, they also expressed three important concerns about...

- the block overshadowing some existing homes and cutting out light
- the scale, massing, height and density of the new development
- the loss of car parking

In addition, security on the estate is a high priority. Residents who turned up at the events were worried about drug-taking and anti-social behaviour, particular in Jubilee Gardens and on the car park. Building on the car park site may help to reduce the problem.

RESIDENTS' VIEWS

"Ensure car parking is considered."

"Happy with development and should reduce anti-social behaviour."

"The block is too tall."

WE LISTENED

We've listened to what you told us and we're taking action.

We're going to look at improving the block's design so that it fits in snugly with estate. We'll increase visitors' parking by creating a one way system around Jubilee Garden with angled parking bays. Finally Tower Hamlets Homes, will consider locking the park overnight following full consultation with the TRA and resident consultation.

We'd like to go on talking to you - and your Tenants' and Residents' Association - about any new concerns as the project progresses. So if something bothers you, please let us know.

Please contact the Resident Liaison officer, Laura Duncan for more information:

Tel: 020 7364 5015

email: laura.duncan@thh.org.uk

http://www.towerhamlets.gov.uk/ignl/housing/affordable_housing.aspx



NEXT STEPS

We want to keep hearing from you. Come along to our next consultation event on **Saturday 12 March 2016** between 10am – 1pm, or **Wednesday 16 March 2016** between 4 – 7pm. Both event will be held at 2 Jarman House, Jubilee Street, E1 3BL.

It is important that you understand the contents of this letter. If you require a further explanation, and/or an interpretation facility, please contact the office shown overleaf as soon as possible.

BENGALI

আপনি এই চিঠির বিষয়বস্তু বুঝতে পারা খুবই গুরুত্বপূর্ণ। যদি আপনার আরো ব্যাখ্যার প্রয়োজন হয়, এবং/অথবা অনুবাদ সুবিধার প্রয়োজন হয়, তাহলে অনুগ্রহ করে অপর পৃষ্ঠায় উল্লেখিত অফিসে যতো তাড়াতাড়ি সম্ভব যোগাযোগ করুন।

SOMALI

WAA MUHIIM IN AAD FAHAMTO WAXYAABAHAA WARQADAN KU QORAN. HADDII AAD SHARAXAAD DHEERAAD AH IYO/AMA HAWL AFCALIN AH U BAAHAN TAHAY. FADLAN SIDA UGU DEGDEGSII MAHA LEH EE SUURTOGALKA AH U LA XIRIIR (XIDHIIDH) XAFIISKA WARQADAN DHABARKEEDA KU QORAN.

URDU

یہ ضروری ہے کہ آپ اس خط کے مواد کو سمجھیں۔ اگر آپ کو مزید تشریح، اور/یا ترجمے کی سہولت کی ضرورت ہے تو براہ مہربانی صفحہ کے پچھلی طرف دکھائے گئے آفس سے جتنی جلدی ہو سکے رابطہ قائم کریں۔

CHINESE

這信的內容對你是非常重要的，如果你需要進一步解釋，或翻譯的要求，請儘早與下頁提供的辦事處聯絡。

VIETNAMESE

ĐIỀU QUAN TRỌNG LÀ QUÍ VỊ HIỂU NỘI DUNG CỦA LÁ THƯ NÀY. NẾU QUÍ VỊ CẦN ĐƯỢC GIẢI THÍCH THÊM, VÀ/HOẶC MỘT PHƯƠNG TIỆN THÔNG DỊCH, XIN LIÊN LẠC NGAY VỚI VĂN PHÒNG GHI Ở PHÍA SAU.