

NEW COUNCIL HOMES FOR LOCKSLEY ESTATE

WHAT'S GOING ON AND WHY

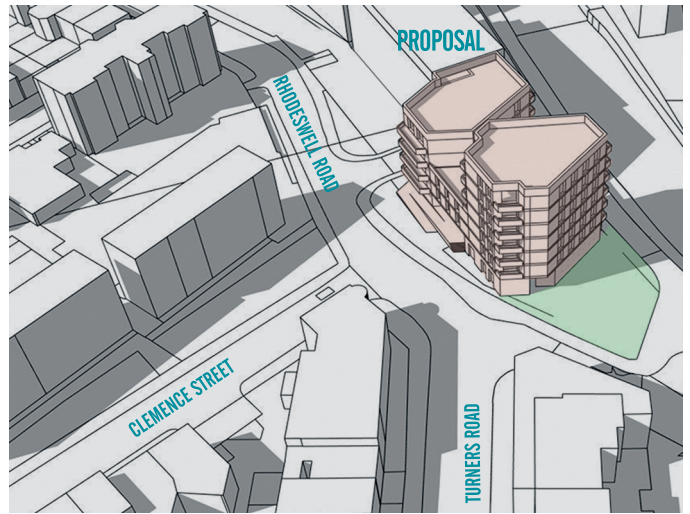
Tower Hamlets Council wants to build more homes for local people and a number of council-owned sites are being brought forward for new council homes, including two sites on the Locksley Estate. In January we showed you proposals to build 37 council flats on the overgrown land next to the Grand Union Canal at Salmon Lane Bridge. We want to put 31-52 more council homes on the under-used car park and small green bordering 86-144 Rhodeswell Road. Some homes will be earmarked for people with disabilities.

Almost 20,000 local people are waiting desperately for an affordable place to live but there's very little unoccupied council land in Tower Hamlets. Building on 'in-fill' sites like the car park is one way of meeting this need.

This is one of four schemes which start our in-fill development in areas across the borough. The council is exploring similar schemes in other locations too. All new homes for rent that we build will go to local people. This is part of the council's wider commitment to help deliver up to 1000 new homes in Tower Hamlets over the next three years.

Your views on what happens on your estate matter. Last month we held two events at Dora Hall on Dora Street to unveil their design plans and hear back from you. In all, 30 brave residents ventured into the January cold. They came, they saw and they spoke out.

We're proposing to build a nine to eleven storey block of flats on the Salmon Lane Bridge site. The design and height of the development next to Rhodeswell Road is still to be decided.










Rhodeswell Road site.

YOUR MAYOR SPEAKS OUT ON HOUSING

We face considerable challenges in delivering really affordable homes for local people. These include the very high local cost of housing, a chronic shortage of stock and a growing population. We welcome the significant regeneration taking place in the borough and the role this plays in transforming Tower Hamlets. However, we must not lose sight of the fact that for increasing numbers of people who grew up in the borough, the possibility of renting or buying a local home has been very difficult.

John Biggs
Mayor of Tower Hamlets

<p>AUGUST 2015</p>  <p>RESIDENT CONSULTATION 1 Site Allocation</p>	<p>JANUARY 2016</p>  <p>RESIDENT CONSULTATION 2 Design Development</p>	<p>MARCH 2016</p>  <p>RESIDENT CONSULTATION 3 Stage 3 Designs</p>	<p>APRIL 2016</p>  <p>SUBMIT PLANNING APPLICATION</p>	<p>JULY 2016</p>  <p>EXPECTED PLANNING DECISION</p>	<p>AUTUMN 2016</p>  <p>EXPECTED START ON SITE</p>	<p>SPRING 2018</p>  <p>EXPECTED PRACTICAL COMPLETION</p>
---	---	--	--	---	--	---

YOU SAID...

The people who went to Dora Hall could see drawings of the new blocks for themselves. Mostly, they liked them and were glad that the vacant sites were being put to good use.

Residents differed on whether a single or double block design was better for the Rhodeswell Road development. They wanted the blocks to respect the existing architecture of the area – with red brick facades and triangular balconies.

While residents were generally in favour of the new homes, some were worried about the size and height of the Salmon Lane Bridge development. Others expressed concerns about the disturbance caused by building works, current repairs, car parking, the progress of the 'Decent Homes' programme, and anti-social behaviour.

On the other hand, several residents thought the new development could help reduce anti-social behaviour and improve the environment on the estate.

RESIDENTS' VIEWS

"Supportive of the proposals."

"Will the new homes be for local people?"

"Concerns about parking."

WE LISTENED

We're glad that our proposals for new homes on the estate have been broadly welcomed by residents. We've also listened to what you told us about the scale of the development at Salmon Lane Bridge. We're now working on the designs to reduce to make sure that all the blocks fit in well with the estate.

We'd like to go on talking to you - and your Tenants' and Resident' Association - about any new concerns as the project progresses. So if something bothers you, please let us know.

Please contact the Resident Liaison officer, Laura Duncan for more information:

Tel: 020 7364 5015

email: laura.duncan@thh.org.uk

http://www.towerhamlets.gov.uk/lgnl/housing/affordable_housing.aspx



NEXT STEPS

We want to keep hearing from you. Come along to our next consultation event on **Saturday 19 March 2016** between 10am – 1pm, or **Monday 21 March 2016**, between 4 – 7pm. Both events will be held at the Dora Hall, Dora Street, E14 7TP.

It is important that you understand the contents of this letter. If you require a further explanation, and/or an interpretation facility, please contact the office shown overleaf as soon as possible.

BENGALI

আপনি এই চিঠির বিষয়বস্তু বুঝতে পারা খুবই গুরুত্বপূর্ণ। যদি আপনার আরো ব্যাখ্যার প্রয়োজন হয়, এবং/অথবা অনুবাদ সুবিধার প্রয়োজন হয়, তাহলে অনুগ্রহ করে অপর পৃষ্ঠায় উল্লেখিত অফিসে যতো তাড়াতাড়ি সম্ভব যোগাযোগ করুন।

SOMALI

WAA MUHIIM IN AAD FAHAMTO WAXYAABAHA WARQADAN KU QORAN. HADDII AAD SHARAXAAD DHEERAAD AH IYO/AMA HAWL AFCALIN AH U BAAHAN TAHAY. FADLAN SIDA UGU DEGDEGSII MAHA LEH EE SUURTOGALKA AH U LA XIRIIR (XIDHIIDH) XAFIISKA WARQADAN DHABARKEEDA KU QORAN.

URDU

یہ ضروری ہے کہ آپ اس خط کے مواد کو سمجھیں۔ اگر آپ کو مزید تشریح، اور/یا ترجمے کی سہولت کی ضرورت ہے تو براہ مہربانی صفحہ کے پچھلی طرف دکھائے گئے آفس سے جتنی جلدی ہو سکے رابطہ قائم کریں۔

CHINESE

這信的內容對你是非常重要的，如果你需要進一步解釋，或翻譯的要求，請儘早與下頁提供的辦事處聯絡。

VIETNAMESE

ĐIỀU QUAN TRỌNG LÀ QUÍ VỊ HIỂU NỘI DUNG CỦA LÁ THƯ NÀY. NẾU QUÍ VỊ CẦN ĐƯỢC GIẢI THÍCH THÊM, VÀ/HOẶC MỘT PHƯƠNG TIỆN THÔNG DỊCH, XIN LIÊN LẠC NGAY VỚI VĂN PHÒNG GHI Ở PHÍA SAU.