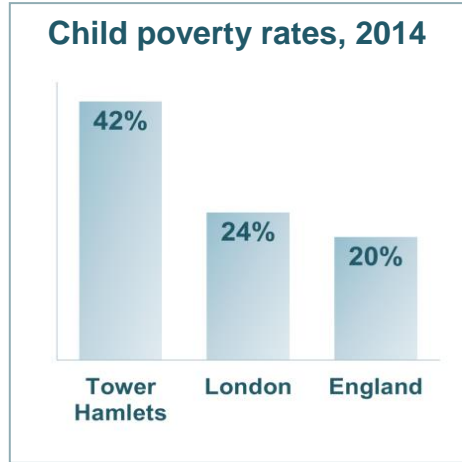
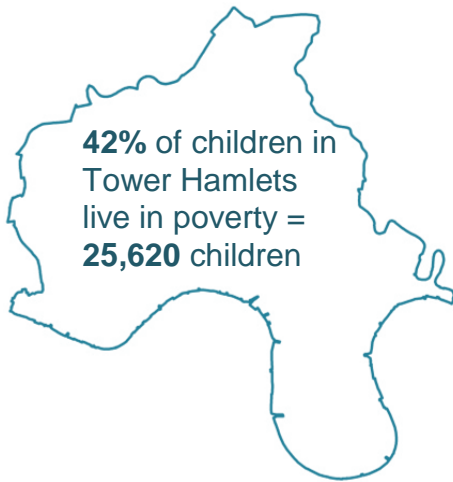


Child poverty in Tower Hamlets: Key facts

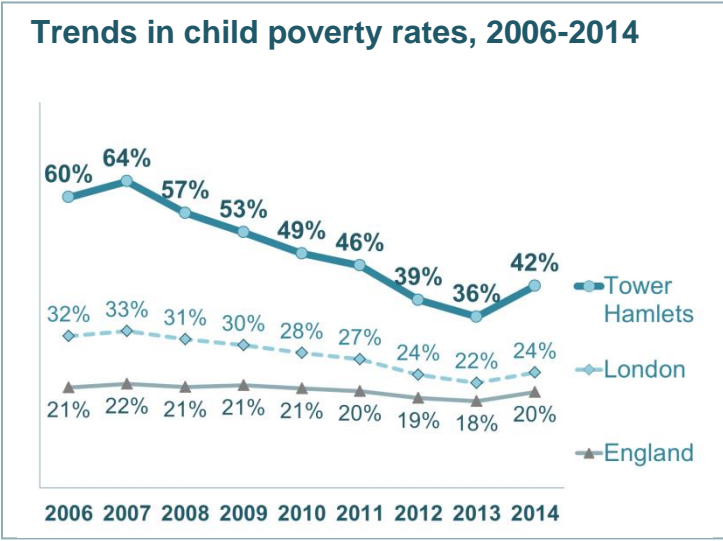
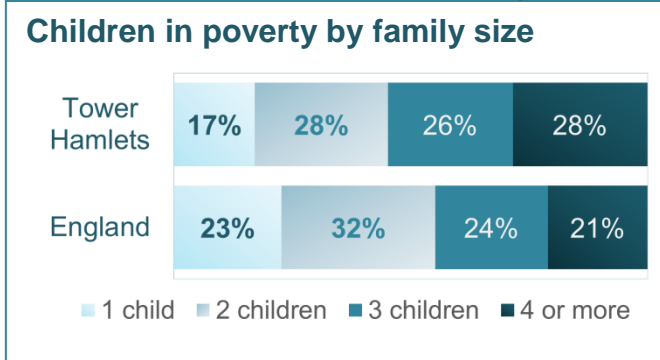
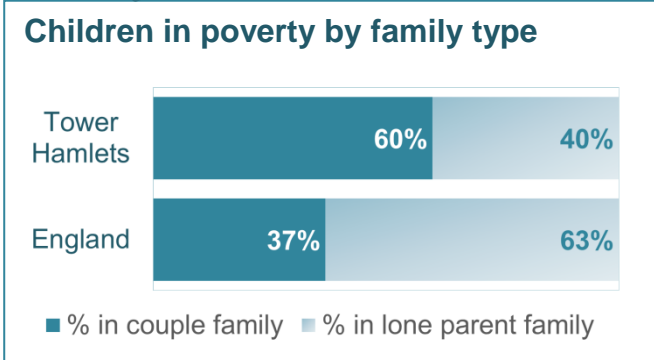
The statistics presented here capture the concept of relative poverty, and measure **the percentage of children falling below the national poverty line**: 60 per cent of national median family income.



Tower Hamlets has the **highest child poverty rate in the UK** - more than double the national average.

In Tower Hamlets, children in poverty are far more likely to live in **couple families** than those nationally.

Children in poverty in Tower Hamlets are more likely to be from **large families** than those nationally.



There has been a strong downward trend in the borough's child poverty rate since 2007, though in 2014, the rate increased again.

This recent rise is likely to reflect a change in the poverty line itself. Indeed, after years of little movement, it rose sharply in 2014, so inevitably, more families are now falling below it. This does not necessarily mean the material circumstances of these families have worsened, but it does mean they are now faring less well relative to the income of others.

