



2011 Census results Population and Household estimates for Tower Hamlets Wards

About this briefing

The 2011 census took place on 23rd March 2011 and the first results were published in July 2012. These results confirmed that on Census day the Tower Hamlets population was 254,100 and that the borough is the fastest growing local authority in the country with an increase of 26% between 2001 and 2011.

ONS published small area statistics for all wards and other small area geographies in England and Wales on 23rd November. This briefing provides analysis of the latest data release published by ONS on population and household estimates for the 17 wards in Tower Hamlets. More results from the 2011 census will be published on 11th December.

Key findings

- Since 2001 there has been an increase in population size and the numbers of households in all wards in Tower Hamlets.
- The average ward size in England and Wales is 6,543 and all wards in Tower Hamlets are at least twice this national average.
- Millwall is largest ward in London (and 52nd largest in England and Wales) with a population of 23,083. Spitalfields and Banglatown is the smallest ward in the borough with a population of
- Millwall is fastest growing ward in London, with an increase of 89.1% in population since 2001.
- Millwall had the largest increase in the number of households with an increase of 81%.
- The average household size in England and Wales is 2.4 and in London 2.5. Tower Hamlets has an average household size of 2.5. Mile End East has the largest household size with 2.85 persons per household and St. Katherine's and Wapping has the smallest, with 2.07 persons per household.
- Shadwell is now the most densely populated ward in the borough with 174.7 residents per hectare whilst Bow East is the least densely populated ward with 79.5 residents per hectare.
- Mile End and Globe Town has the largest numbers of residents living in communal establishments (e.g. student accommodation).

Population by Ward

Table 1: 2011 Census Population and household estimates for wards in Tower Hamlets

Ward name	Persons All usual residents	Persons Household residents	Persons Communal establishment residents	Persons per hectare Population density
Bethnal Green North	13,683	13,393	290	166.3
Bethnal Green South	14,166	13,779	387	160.7
Blackwall and Cubitt Town	19,461	19,461	0	86.7
Bow East	14,781	14,780	1	79.5
Bow West	12,939	12,887	52	96.1
Bromley-by-Bow	14,480	14,460	20	134.8
East India and Lansbury	14,859	14,762	97	126.1
Limehouse	15,986	15,911	75	149.1
Mile End East	13,354	13,258	96	124.8
Mile End and Globe Town	15,190	13,897	1293	168.8
Millwall	23,084	23,083	1	117.7
Shadwell	15,110	15,083	27	174.7
Spitalfields and Banglatown	10,286	9,451	835	161.1
St Dunstan's and Stepney Green	16,238	15,980	258	159.5
St Katharine's and Wapping	12,411	12,344	67	108.7
Weavers	13,206	13,159	47	169.5
Whitechapel	14,862	14,655	207	161.9

Source: 2001 Census

Small area statistics published by ONS on 23rd November confirmed that the average population size of a ward in England and Wales is now 6,543. All wards in Tower Hamlets have an average population well above the national average. Millwall is the largest ward in the borough with 23,084 residents and is the fastest growing ward in the London, increasing by 89% between 2001 and 2011. Two others wards in Tower Hamlets are also ranked in the top 10 wards with the largest population increases in London, Blackwall and Cubitt which is ranked 3rd, increasing by 57.7% and Bow East, ranked 6th, increasing by 53.7%. Spitalfields and Banglatown is the smallest ward with a population of 10,286. Bethnal Green South, with a population of 14,166, had the smallest population increase between 2001 and 2011, increasing by 6.2%.

Households by Ward

Between 2001 and 2011 Tower Hamlets had the largest increase in the number of households in the country Millwall has 10,821 households, the largest number of households in the borough, had the largest increase in the borough in the number of households, with an increase of almost 81%. Spitalfields and Banglatown is the smallest ward with 3,900 households. The ward with the smallest increase in the number of households is Bethnal Green South, increasing by only 5.4%,

Table 2: Households by Wards in Tower Hamlets, 2001

	Households with at least one usual resident, 2001			
	2001	2011	Increase	Percentage Increase
Bethnal Green North	4,586	5,381	795	17.3%
Bethnal Green South	4,975	5,244	269	5.4%
Blackwall and Cubitt Town	5,283	8,654	3,371	63.8%
Bow East	4,190	6,595	2,405	57.4%
Bow West	4,396	5,009	613	13.9%
Bromley-by-Bow	4,142	5,149	1,007	24.3%
East India and Lansbury	4,372	5,259	887	20.3%
Limehouse	5,081	6,350	1,269	25.0%
Mile End East	4,202	4,647	445	10.6%
Mile End and Globe Town	4,588	5,352	764	16.7%
Millwall	5,991	10,821	4,830	80.6%
Shadwell	4,394	5,815	1,421	32.3%
Spitalfields and Banglatown	2,918	3,900	982	33.7%
St Dunstan's and Stepney Green	4,587	5,739	1,152	25.1%
St Katharine's and Wapping	5,277	5,972	695	13.2%
Weavers	4,697	5,573	876	18.7%
Whitechapel	4,311	5,797	1,486	34.5%
Tower Hamlets	77,990	101,257	23,267	29.8%

Source: 2011 Census

Average household size by Ward

The average household size in England and Wales is 2.4 and in London 2.5. Tower Hamlets has an average household size of 2.5. Mile End East has the largest average household size (2.85 persons per household) and is ranked 72th in London and 145th in England and Wales. St. Katherine's and Wapping is the ward with the smallest average household size, 2.07 persons per household.

**Table 3:
Average household size for
Wards in Tower Hamlets , 2011**

	average household size
Bethnal Green North	2.5
Bethnal Green South	2.6
Blackwall and Cubitt Town	2.2
Bow East	2.2
Bow West	2.6
Bromley-by-Bow	2.8
East India and Lansbury	2.8
Limehouse	2.5
Mile End East	2.9
Mile End and Globe Town	2.6
Millwall	2.1
Shadwell	2.6
Spitalfields and Banglatown	2.4
St Dunstan's and Stepney Green	2.8
St Katharine's and Wapping	2.1
Weavers	2.4
Whitechapel	2.5

Source: 2001 Census

Between 2001 and 2011, East India and Lansbury had the largest increase in average household size increasing from 2.36 persons per household in 2001 to 2.57 in 2011.

By contrast Spitalfields and Banglatown has had the largest decrease in household size falling from 2.82 in 2001 to 2.42 persons per household.

Residents in communal establishments by Ward

On census day, 3,753 residents were living in communal establishments. Whitechapel had the highest number of residents (1,293) living in communal establishments.

Population change

All wards in Tower Hamlets experienced an increase in population size between 2001 and 2011. Millwall experienced the largest population increase in the borough and in London as a whole, with a population increase of 89.9%. Bethnal Green South had the smallest population increase increasing by only 6.2%

Table 4: Population Change by Ward, 2001 to 2011

	2001 MYE	2011		Percentage change
Bethnal Green North	12,030	13,683	1,653	14
Bethnal Green South	13,341	14,166	825	6
Blackwall and Cubitt Town	12,342	19,461	7,119	58
Bow East	9,681	14,781	5,100	53
Bow West	10,986	12,939	1,953	18
Bromley-by-Bow	11,853	14,480	2,627	22
East India and Lansbury	12,009	14,859	2,850	24
Limehouse	12,804	15,986	3,182	25
Mile End and Globe Town	12,018	15,190	3,172	26
Mile End East	11,427	13,354	1,927	17
Millwall	12,207	23,084	10,877	89
St Dunstan's and Stepney Green	12,915	16,238	3,323	26
St Katharine's and Wapping	11,589	12,411	822	7
Shadwell	12,393	15,110	2,717	22
Spitalfields and Banglatown	9,447	10,286	839	9
Weavers	11,184	13,206	2,022	18
Whitechapel	12,864	14,862	1,998	16

Source: 2011 Census

Population Density

England and Wales has a population density of 4.1 persons per hectare whilst for London it is 52 persons per hectare. The 100 most densely populated wards in the country are all in London, with Church Street ward in Westminster the most densely populated ward in the country (264.7 persons per hectare). Shadwell is the most densely populated ward with 174.7 persons per hectare, followed by Weavers (169.5 persons per hectare). Bow East is the least populated ward with 79.5 persons per hectare.

Age Structure

Census results published in July confirmed that 7% of the borough's population are aged 0 – 4, compared to 6% nationally. Bromley by Bow and East India and Lansbury have the highest percentage of residents in this age group at 9%, whilst Spitalfields and Banglatown has the lowest percentage (5%).

In terms of residents aged 5 -19, East India and Lansbury has the highest proportion at 24%, compared to the borough and regional average of 17%. St. Katherine's and Wapping has the lowest proportion, with 9% of residents in this age group.

Millwall and St. Katherine's and Wapping have the highest proportion of residents aged 20 - 64 (78%), compared to the borough average of 69%. East India and Lansbury has the lowest proportion of residents in this age group (59%).

The percentage of residents 65 and over in the borough is 6% compared to the London's 11%. Millwall has the lowest proportion of residents aged 65 and over (4%) and St. Dunstan's and Stepney the highest percentage, 9%.

Table 5: Population by age in Wards in Tower Hamlets, 2011

	All ages	0 – 4	5 – 9	10 – 14	15 – 19	20 – 24	25 – 29	30 – 34	35 – 39	40 – 44	45 – 49	50 – 54	55 – 59	60 – 64	65 and over
Bethnal Green North	13,683	834	807	731	770	1,640	2,247	1,749	1,174	812	630	575	416	340	958
Bethnal Green South	14,166	962	877	788	1,030	2,157	2,257	1,600	1,042	831	636	522	444	265	755
Blackwall and Cubitt Town	19,461	1,536	1,016	766	768	2,172	3,568	3,265	1,873	1,162	799	652	545	426	913
Bow East	14,781	1,002	772	685	681	1,800	2,550	2,009	1,134	886	773	579	437	386	1,087
Bow West	12,939	931	766	667	622	1,563	1,949	1,491	970	790	692	574	518	399	1,007
Bromley-by-Bow	14,480	1,365	1,241	1,062	1,014	1,633	1,813	1,535	1,148	912	657	540	433	294	833
East India and Lansbury	14,859	1,351	1,387	1,123	1,123	1,403	1,543	1,428	1,090	987	780	670	556	379	1,039
Limehouse	15,986	1,341	1,105	926	890	1,547	2,241	2,098	1,484	1,072	749	609	546	386	992
Mile End East	13,354	1,117	996	888	882	1,795	1,952	1,481	1,030	768	578	472	383	257	755
Mile End and Globe Town	15,190	979	947	795	1,655	2,240	2,109	1,633	1,141	826	641	494	416	314	1,000
Millwall	23,084	1,708	1,010	736	841	2,650	4,396	4,130	2,328	1,518	1,068	834	603	458	804
Shadwell	15,110	1,267	1,045	900	885	1,599	2,181	1,934	1,334	1,021	676	578	379	353	958
Spitalfields and Banglatown	10,286	509	416	395	631	1,653	2,012	1,366	848	522	415	410	347	191	571
St Dunstan's and Stepney Green	16,238	1,286	1,191	1,154	1,137	1,982	1,895	1,647	1,286	980	768	614	471	448	1,379
St Katharine's and Wapping	12,411	814	444	367	367	1,075	2,123	1,913	1,322	955	708	620	538	410	755
Weavers	13,206	812	734	616	574	1,567	2,324	1,792	1,157	822	638	510	419	316	925
Whitechapel	14,862	936	777	603	753	2,342	2,997	1,957	1,178	814	570	483	372	241	839

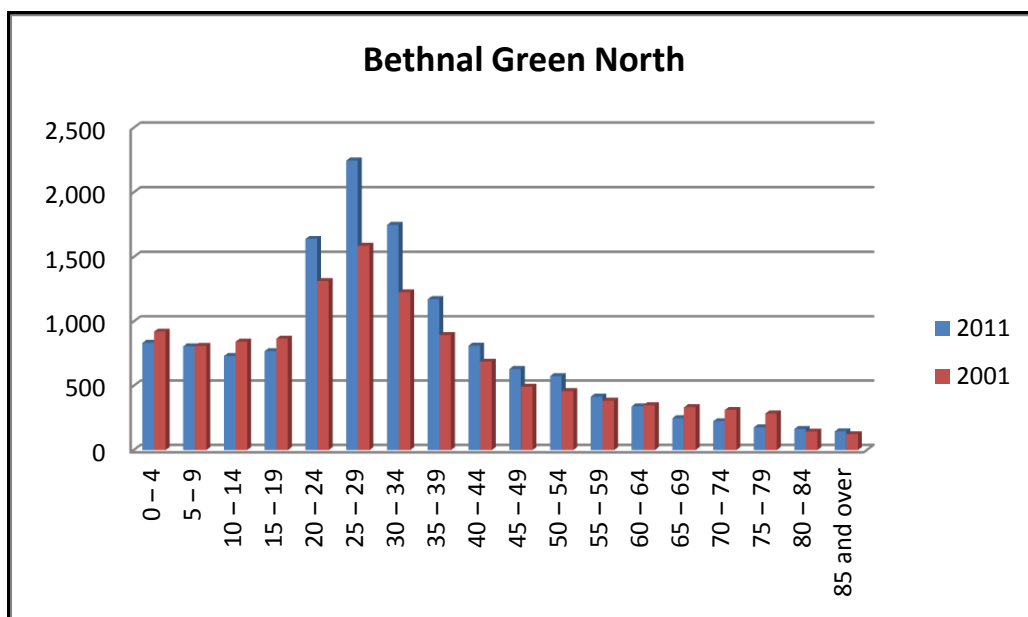
Source: 2011 Census

Table 6: Population by Age (%) in Wards, 2011

	All ages	0 – 4	5 – 9	10 – 14	15 – 19	20 – 24	25 – 29	30 – 34	35 – 39	40 – 44	45 – 49	50 – 54	55 – 59	60 – 64	65 and over
Bethnal Green North	100%	6%	6%	5%	6%	12%	16%	13%	9%	6%	5%	4%	3%	2%	7%
Bethnal Green South	100%	7%	6%	6%	7%	15%	16%	11%	7%	6%	4%	4%	3%	2%	5%
Blackwall and Cubitt Town	100%	8%	5%	4%	4%	11%	18%	17%	10%	6%	4%	3%	3%	2%	5%
Bow East	100%	7%	5%	5%	5%	12%	17%	14%	8%	6%	5%	4%	3%	3%	7%
Bow West	100%	7%	6%	5%	5%	12%	15%	12%	7%	6%	5%	4%	4%	3%	8%
Bromley-by-Bow	100%	9%	9%	7%	7%	11%	13%	11%	8%	6%	5%	4%	3%	2%	6%
East India and Lansbury	100%	9%	9%	8%	8%	9%	10%	10%	7%	7%	5%	5%	4%	3%	7%
Limehouse	100%	8%	7%	6%	6%	10%	14%	13%	9%	7%	5%	4%	3%	2%	6%
Mile End East	100%	8%	7%	7%	7%	13%	15%	11%	8%	6%	4%	4%	3%	2%	6%
Mile End and Globe Town	100%	6%	6%	5%	11%	15%	14%	11%	8%	5%	4%	3%	3%	2%	7%
Millwall	100%	7%	4%	3%	4%	11%	19%	18%	10%	7%	5%	4%	3%	2%	3%
Shadwell	100%	8%	7%	6%	6%	11%	14%	13%	9%	7%	4%	4%	3%	2%	6%
Spitalfields and Banglatown	100%	5%	4%	4%	6%	16%	20%	13%	8%	5%	4%	4%	3%	2%	6%
St Dunstan's and Stepney Green	100%	8%	7%	7%	7%	12%	12%	10%	8%	6%	5%	4%	3%	3%	8%
St Katharine's and Wapping	100%	7%	4%	3%	3%	9%	17%	15%	11%	8%	6%	5%	4%	3%	6%
Weavers	100%	6%	6%	5%	4%	12%	18%	14%	9%	6%	5%	4%	3%	2%	7%
Whitechapel	100%	6%	5%	4%	5%	16%	20%	13%	8%	5%	4%	3%	3%	2%	6%

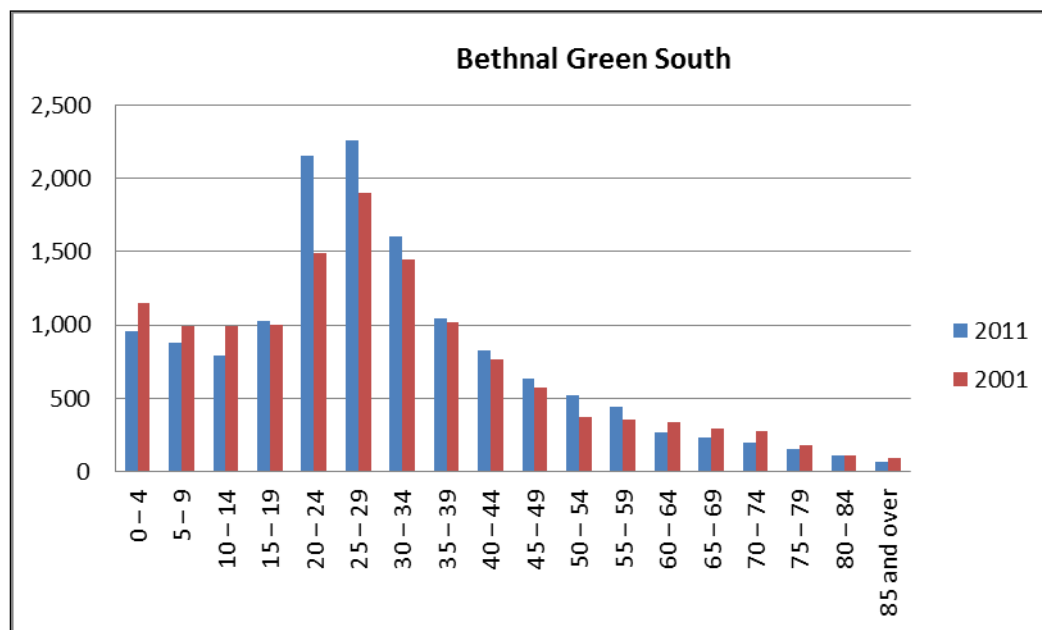
Source: 2011 Census

Population Change by Age



Source: 2011 Census

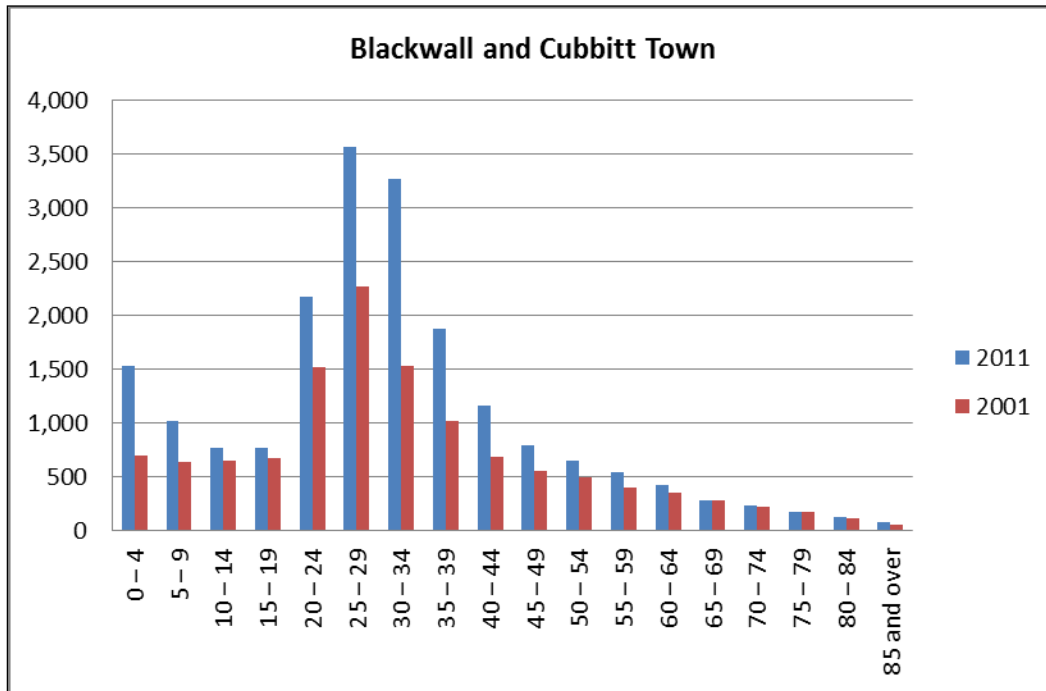
The population in Bethnal Green North increased by 14% between 2001 and 2011 from 12,030 to 13,683. Residents aged 25 -29 are the largest population group (2,257). Amongst this age group there has been a 42% increase and residents aged 30 – 34 there has been a 43% since 2001. However, amongst there has been a 20% decrease in the numbers of older residents aged (65 and over).



Source: 2011 Census

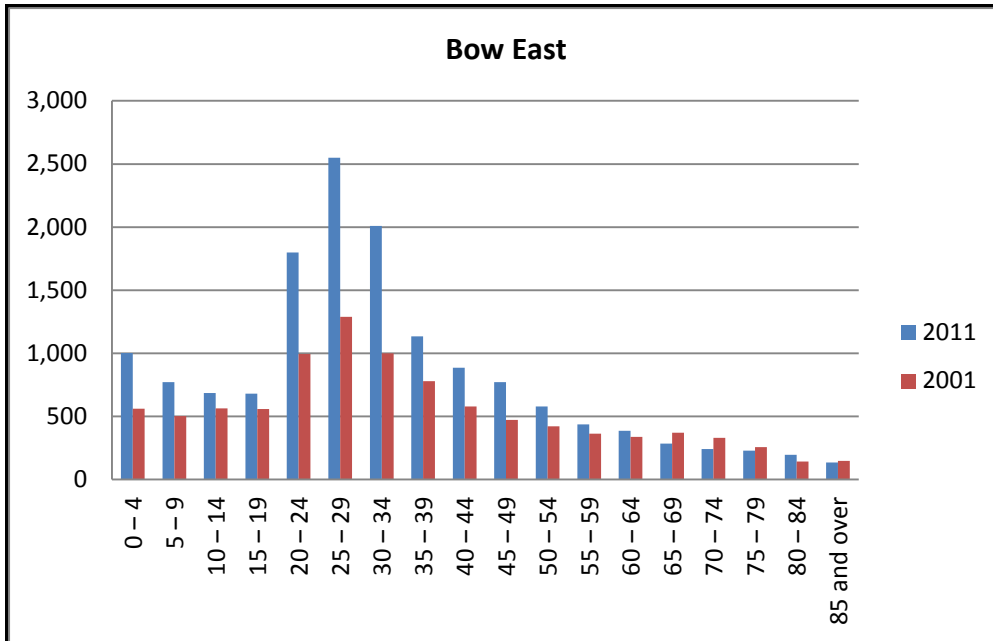
The population in Bethnal Green South increased by 6% between 2001 and 2011, from 13,341 to 14,166.

The largest population group are working aged residents aged 20 – 29 who now make up 31% of the population. The number of residents in this age group has increased by . However, there has also been a decline in the numbers of older residents, those 65 and over, falling by 21%.



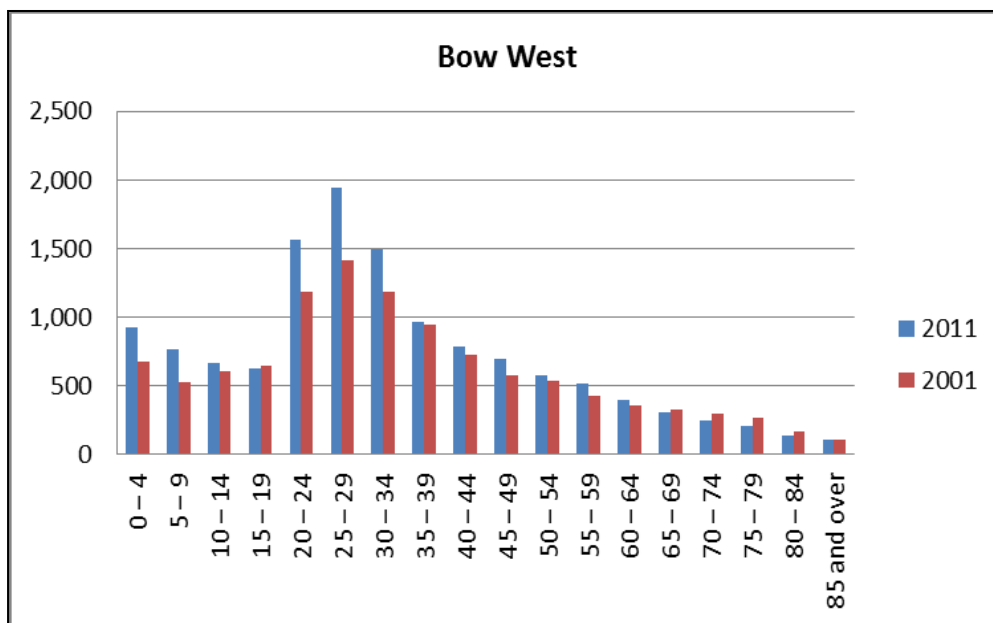
Source: 2011 Census

Blackwall and Cubitt Town had the second largest increase in population size in the borough between 2001 and 2011, increasing by 58% from 12,342 to 19,461. There have been increases across all age groups, with the largest increase (122%) amongst 0 – 4 year old and 113% increase amongst 30 -34 year olds. Amongst older residents (64 and over) there has also been an 8% increase. Adults aged 20 -34 now make up almost half of the population (46%).



Source: 2011 Census

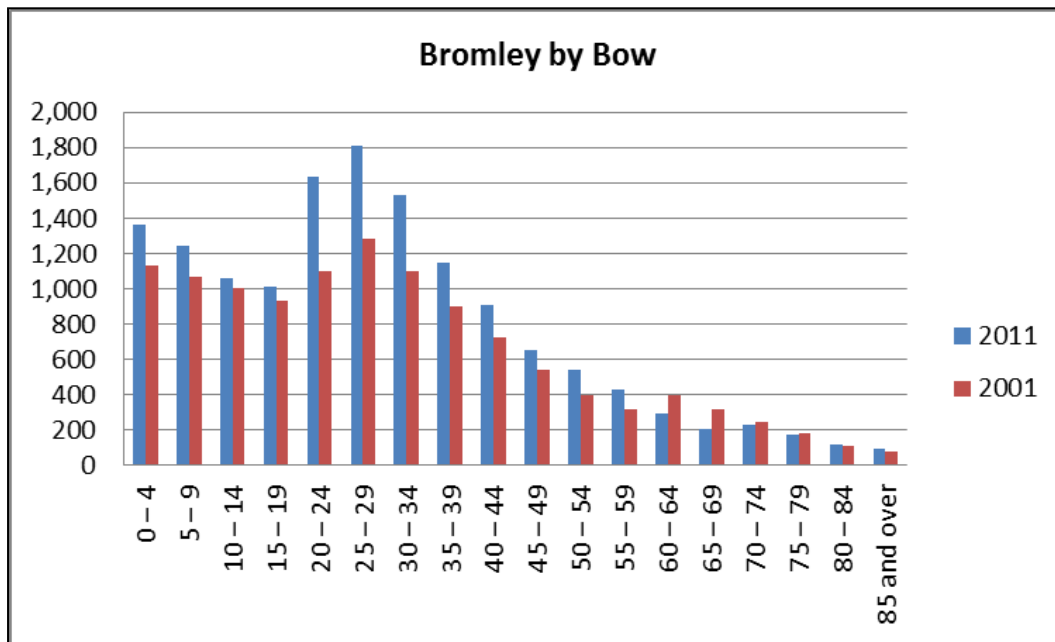
Bow East had the third largest population increase in the borough, increasing by 53% from 9,681 in 2001 to 14,781 in 2011. Adults aged 20 – 34 are now the largest population group, making up 43% of the population. The largest increase has been amongst residents aged 30-34 (101% increase) and amongst 25-29 age group (98% increase). Around 7% of the population are 64 and over but there has been a 13% decrease in this age group since 2001.



Source: 2011 Census

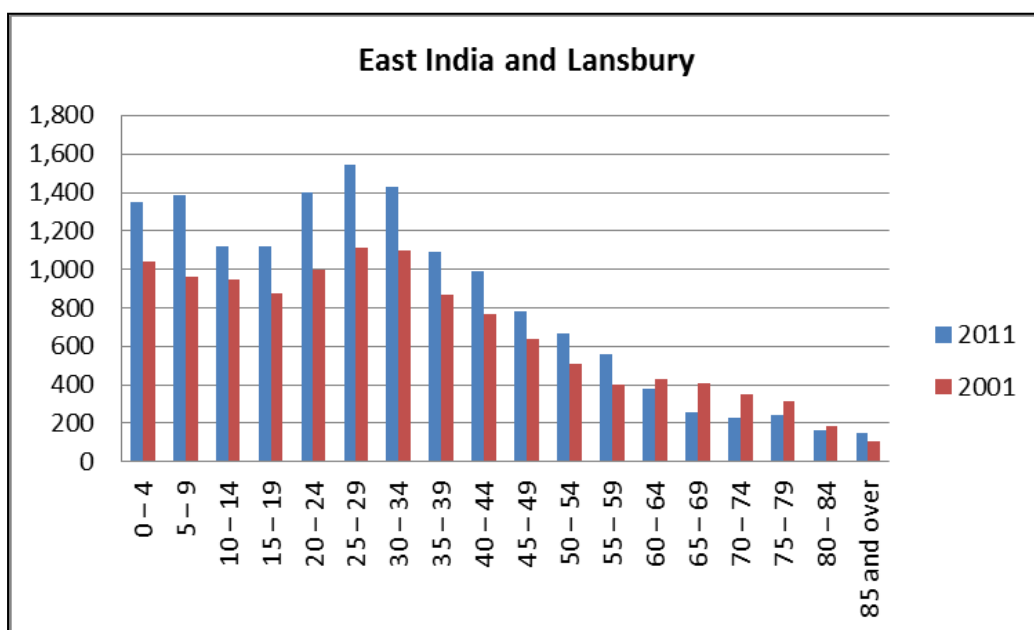
The population in Bow West increased by 18%, from 10,986 in 2001 to 12,939 in 2011. There has been an increase of 32% in the numbers of adults aged 20 – 34. This age group

make up 39% of the population. However, there has been a 13% decrease in the numbers of older residents aged 64 and over.



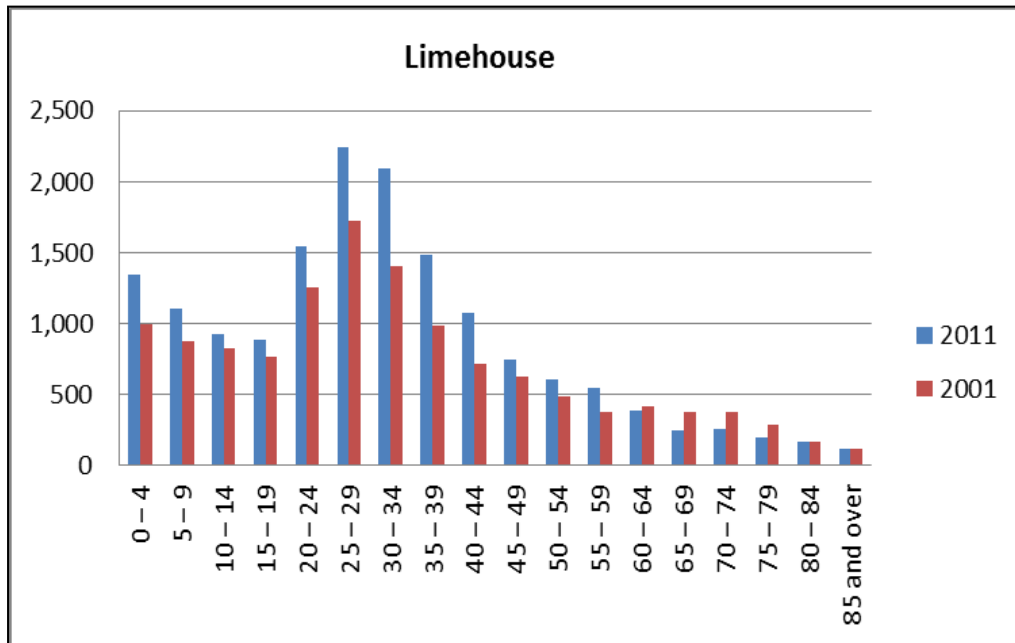
Source: 2011 Census

The population in Bromley by Bow increased by 22% from 11,853 in 2001 to 14,480 in 2011. The largest population change has been amongst adults aged 20 -24 (48% increase) and 25-29 (41% increase) and whilst the numbers of older residents (65 and over) have fallen by 13%. Around 35% of the population are adults (20 -34).



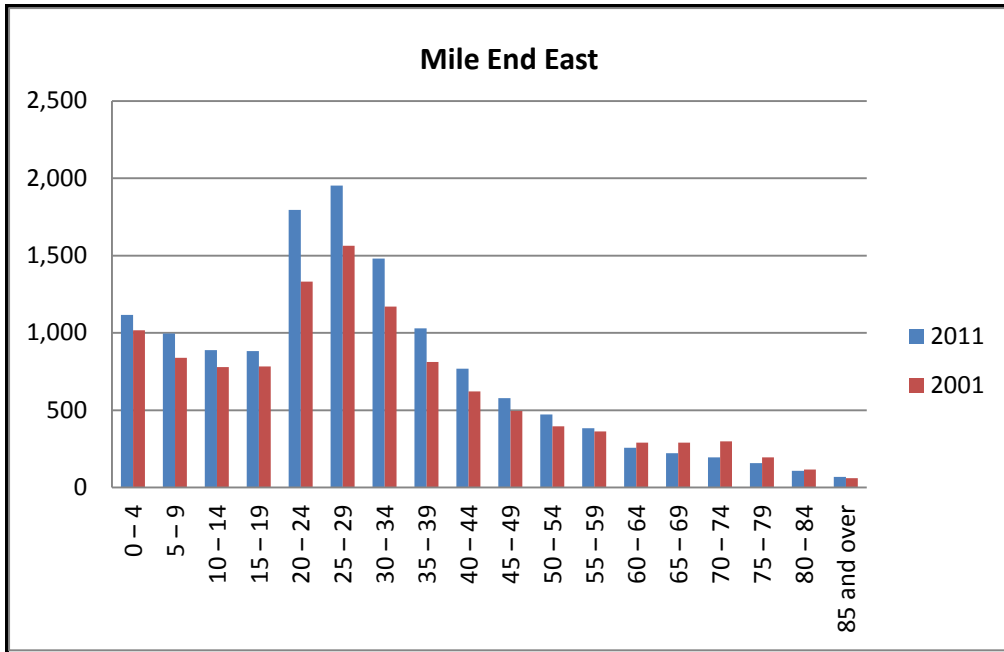
Source: 2011 Census

The population in East India and Lansbury increased 24% from 12,009 in 2001 to 14,859 in 2011. Approximately 9% of the population are aged 0 -4 and 24% aged 5 -19. There has also been a significant increase in the numbers of young adults, those aged 20 -24 (40% increase) and those aged 25- 29 (39% increase). Similar to the borough average, around 6% of the population are aged 65 and over but there has been a 24% decrease in the numbers of residents in this age group.



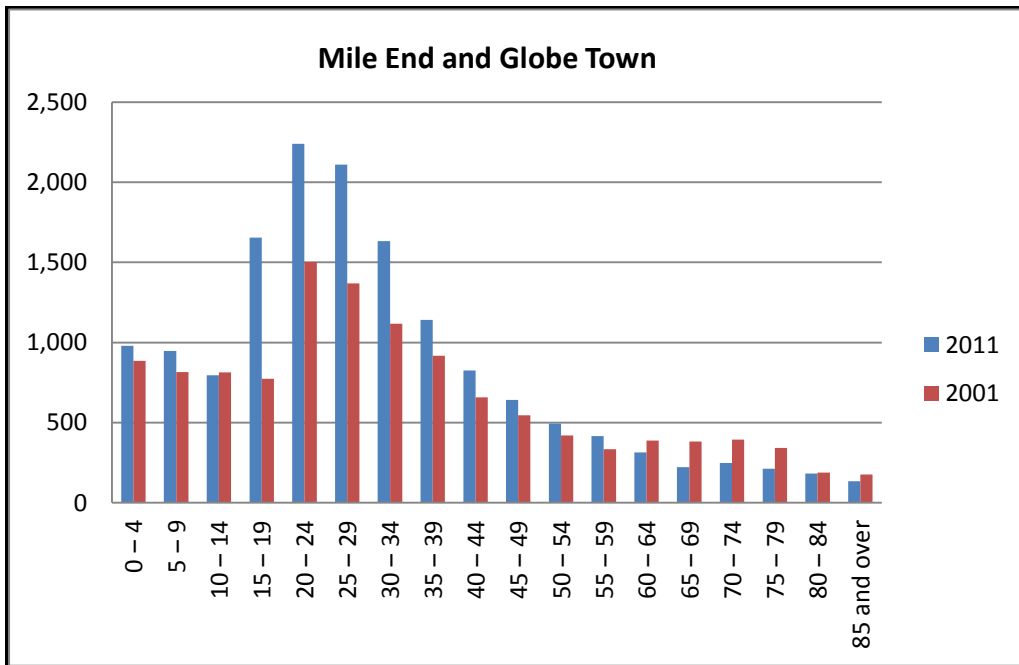
Source: 2011 Census

Between 2001 and 2011 there was a 25% increase in the population in Limehouse, with the population increasing from 12,804 to 15,986. Adults aged 20 -34 make up 37% of the population and largest increase, an increase of 50%, has been amongst those aged 30 - 44. There has been a 26% fall in the number of older residents aged 65 and over.



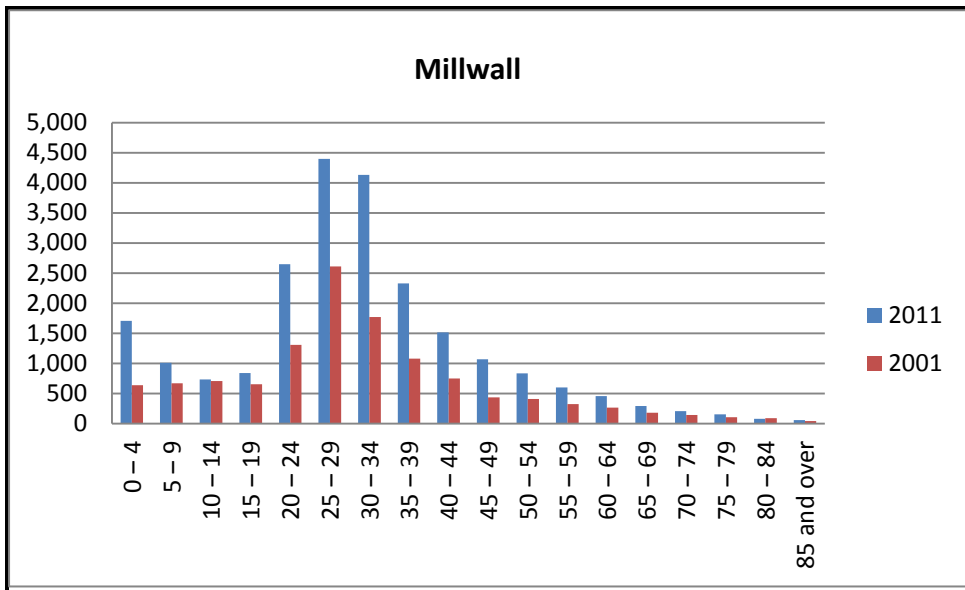
Source: 2011 Census

Between 2001 and 2011, the population in Mile End East increased by 17% from 11,427 and 13,354. The numbers of young adults aged 15 – 19 has doubled and adults aged 20 34 now make up 39% of the total population. However there has been a 14% decrease in the numbers of older adults (65 and over).



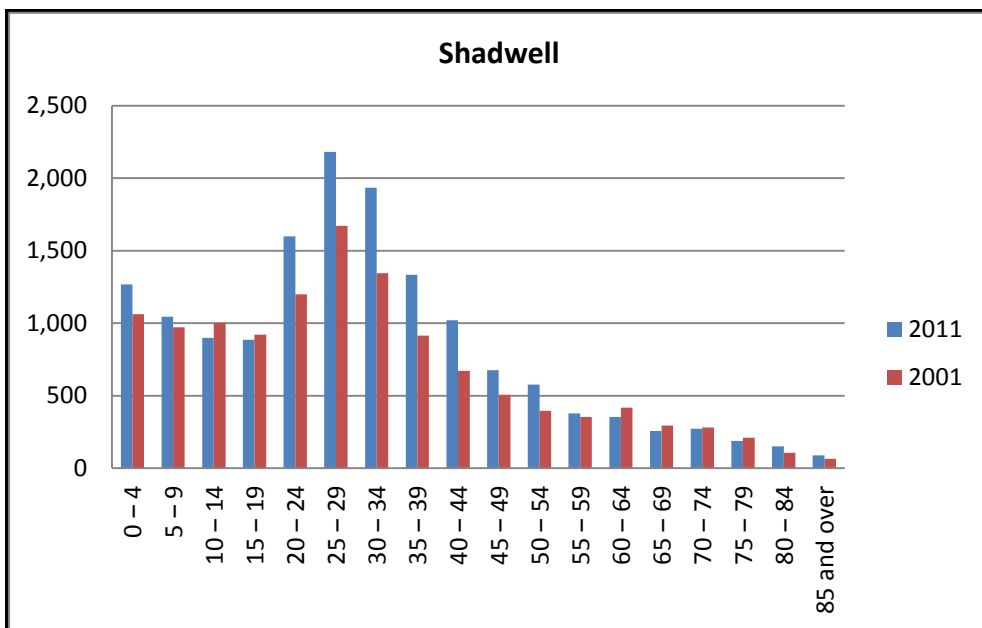
Source: 2011 Census

The population in Mile End and Globe Town increased by 26% from 12,018 in 2001 to 15,190 in 2011. The numbers of young adults aged 15 – 19 have doubled since 2001 and Adults (20 -34) make up 31% of the population. The numbers of older adults (64 and over) have fallen by 4%.



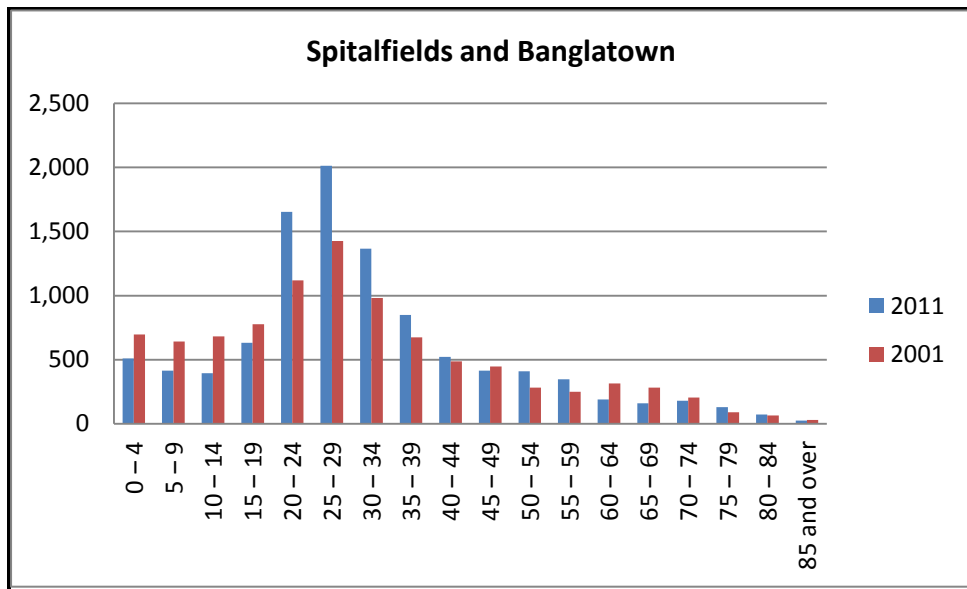
Source: 2011 Census

Millwall has had the largest increase in population size in the borough, increasing by 89% from 12,207 in 2001 to 23,084 in 2011. There have been increases in almost all age groups except the number of older residents aged 84-89 (a decrease of 9%). Adults aged 20- 34 are now the largest population group, 48% of the total population. The numbers of 0 – 4 year olds as well as the number of working age adults aged 20 – 49 have doubled since 2001. There has been a 41% increase in the number of older residents aged 65 and over who now 3% of the total population.



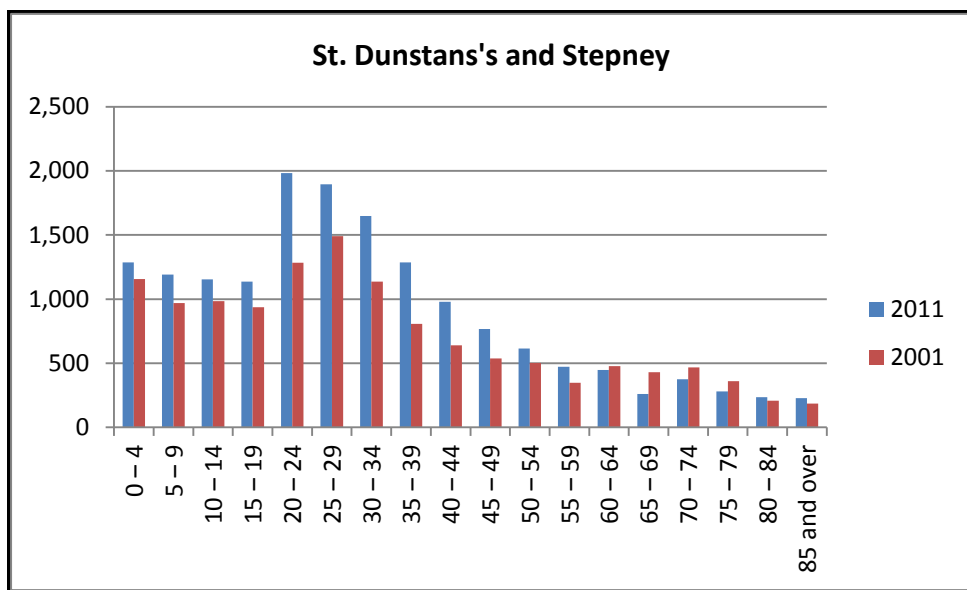
Source: 2011 Census

Shadwell has had a population increase of 22%, increasing from 12,393 in 2001 to 15,110 in 2011. Adults, aged 20 -49, now make up 58% of the population and have increased by 38 % since 2001. Older residents aged 64 and over are 6% of the total population.



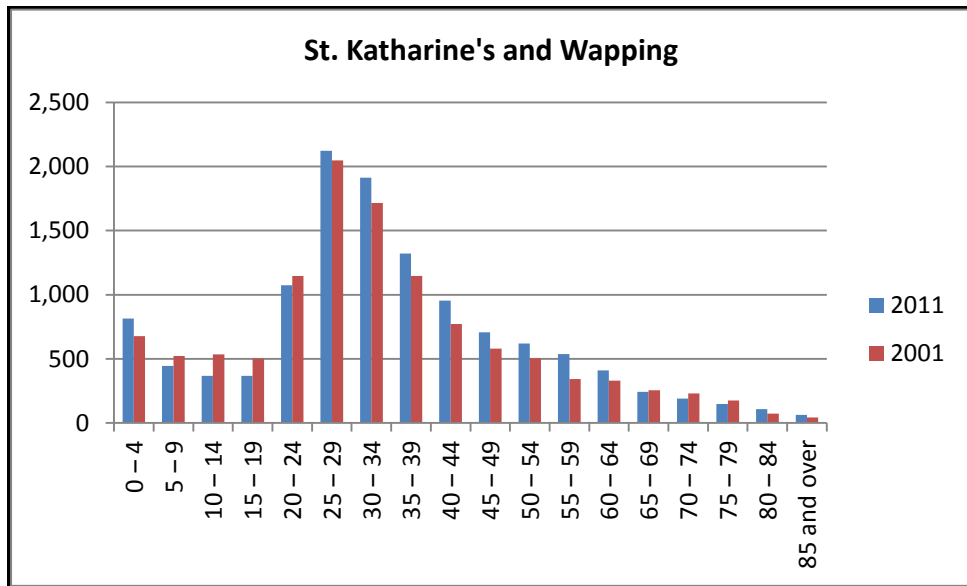
Source: 2011 Census

Spitalfields and Banglatown has had a population increase of 9%, increasing from 9,447 in 2001 to 10,286 in 2011. Whilst the numbers of adults aged 20 – 44 have increased by 10% and now make up 68% of the total population there has been a notable decrease in the numbers of young residents aged 0 -19, a fall of 30%. Around 6% of the total population are now 64 and over and amongst this age group there has been a 13% increase since 2001.



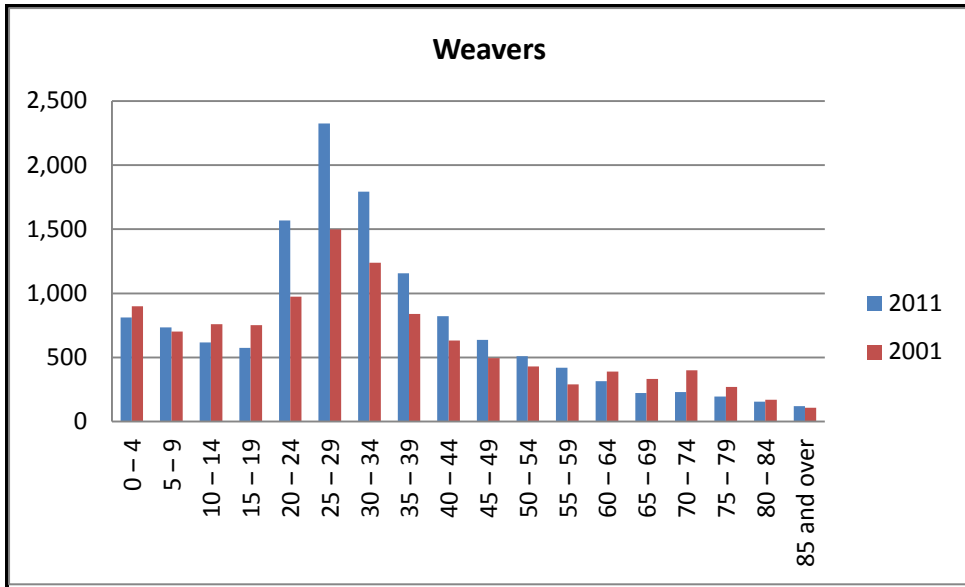
Source: 2011 Census

The population in St. Dunstan’s and Stepney increased by 26% between 2001 and 2011 from 12,915 to 16,238. The numbers of adults aged 20 – 44 have increased by 45% and now make up 48% of the total population. Around 8% of the population are aged 64 and over and there has been a 28% decrease in this age group since 2001.



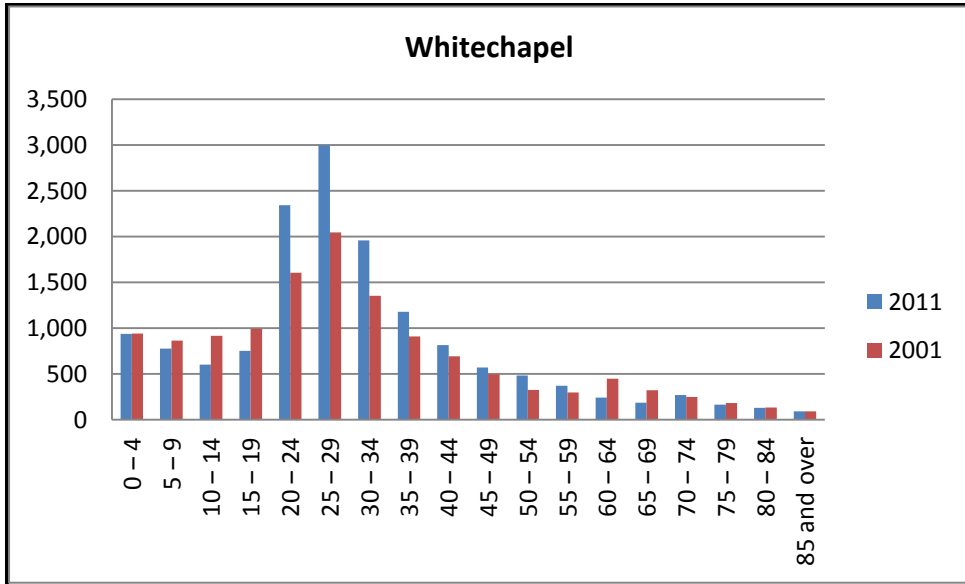
Source: 2011 Census

Between 2001 and 2011 the population in St. Katharine’s and Wapping increased by 7%, the second smallest increase of all Tower Hamlets wards, increasing from 11,589 to 12,411. Overall there has been an 8% increase in the numbers of adults aged 22 -44 and this age group are % of the total population. Residents aged 25 to 34 are the largest population. There has been a notable decrease in the numbers of younger residents aged 5 -19 (24% decrease). However 7% of the total population are 0-4 (an increase of 7% since 2001) and 6% are 64 and over.



Source: 2011 Census

Between 2001 and 2011 the population in Weavers increased by 18% from 11,184 to 12,206. The largest population group is the 25 – 29 age group and adults aged 20 -44 make up 59% of the total population. Since 2001 there has been a 48% increase in the numbers of residents in this age group (20-44). There has been a notable decrease in the numbers of residents aged 0 -19 (12%) and amongst older residents aged 65 and over (28% decrease).



Source: 2011 Census

Whitechapel has had a population increase of 16%, increasing from 12,684 in 2001 to 14,862 in 2011. Adults aged 20 – 44 now make up 62% of the total population. Adults aged 20 – 44 make up 62% of the total population. There has been a 17% decrease in the numbers of 0 -19 years as well a 14% decrease in the numbers of older residents aged 65 and over. However there has been a significant increase (46%) in the numbers of residents

aged 20 -24 and 25-29. The 25 – 29 age group is now the largest population group in Whitechapel.

Definitions

The **average household size** for an area is equal to the total number of usual residents living in households in that area divided by the total number of households in that area that have at least one usual resident.

Visitors staying at an address do not contribute to that household's size because they are counted in the household of their place of usual residence.

A **communal establishment** is an establishment providing managed residential accommodation. 'Managed' in this context means full-time or part-time supervision accommodation.

Types of communal accommodation include:

- Sheltered accommodation units;
- Small hotels, guest house, bed and breakfasts, inns and pubs with resident accommodation with room for more than 10 or more guests, and
- All accommodation provided solely for students (during term-time). This includes university cluster flats, houses and apartments located within student villages , and similar accommodation owned by a private company and provided solely for students.

A **dwelling** is defined as a self-contained unit of accommodation, and may contain one or more households.

A **household** is defined as:

- One person living alone, or
- A group of people (not necessarily related) living at the same address who share cooking facilities and share a living room or a dining area

The **household size** is equal to the number of usual residents in the household.

A usual resident refers to a person who on census day, was in the UK and had stayed or intended to stay in the UK for a period of 12 months or more, or had a permanent UK address and was outside the UK and intended to be outside the UK for less than 12 months.

Corporate Research Unit

This Briefing was produced by the Council's Corporate Research Unit (CRU), which is based in the Chief Executive's Directorate. Research briefings and factsheets provide timely and in-depth analysis of data about Tower Hamlets and are designed to improve the use and sharing of data across the Partnership.

Recent briefings include:

- Tower Hamlets Ward data report (Research Briefing 2012/09)
- Unemployment Briefing (Research Briefing 2012//08)
- 2011 Census Briefing (Research Briefing 2012/07)
- Annual Residents Survey Results 2011/12 (Research Briefing 2012/06)

Recent factsheets include:

- Women and Worklessness (Factsheet 2012/04)
- House prices, July 2012 (Factsheet 2012/03)

Contact details the Corporate Research Unit by email CRU@towerhamlets.gov.uk

The CRU contact for enquiries relating to this briefing is: [Juanita Haynes](#)

Disclaimer for Public information:

The London Borough of Tower Hamlets is committed to the highest standard and quality of information and every reasonable attempt has been made to present accurate information. However, the information in this publication has been provided for information purposes only and the London Borough of Tower Hamlets gives no warranty, express or implied, as to the accuracy, timeliness or decency of the information and accepts no liability for any loss, damage or inconvenience howsoever arising, caused by, or as a result of, reliance upon such information.

Crown Copyright material is reproduced with the permission of the Controller of HMSO.