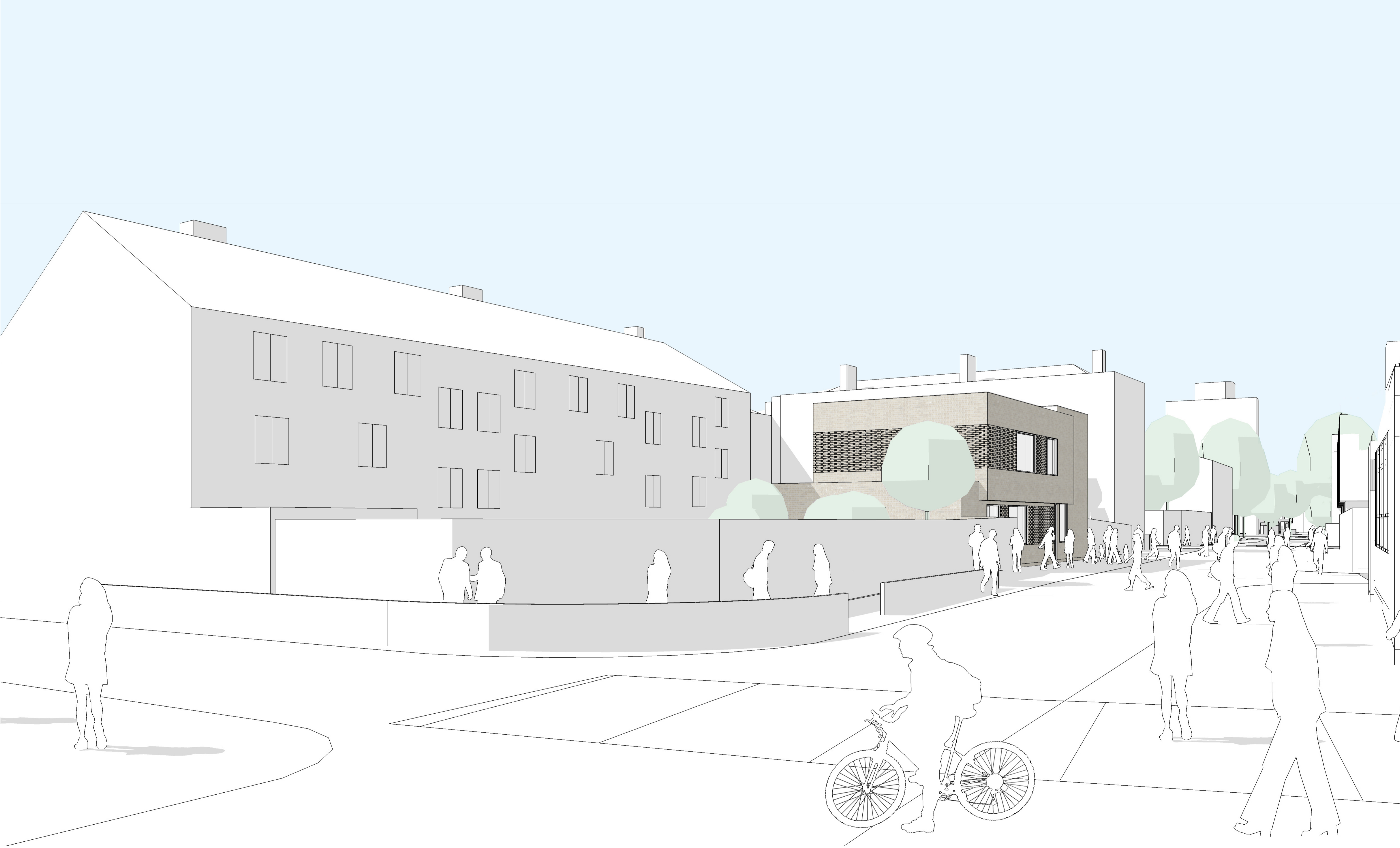


KERBEY STREET - VIEW NORTH TOWARDS CORDELIA STREET



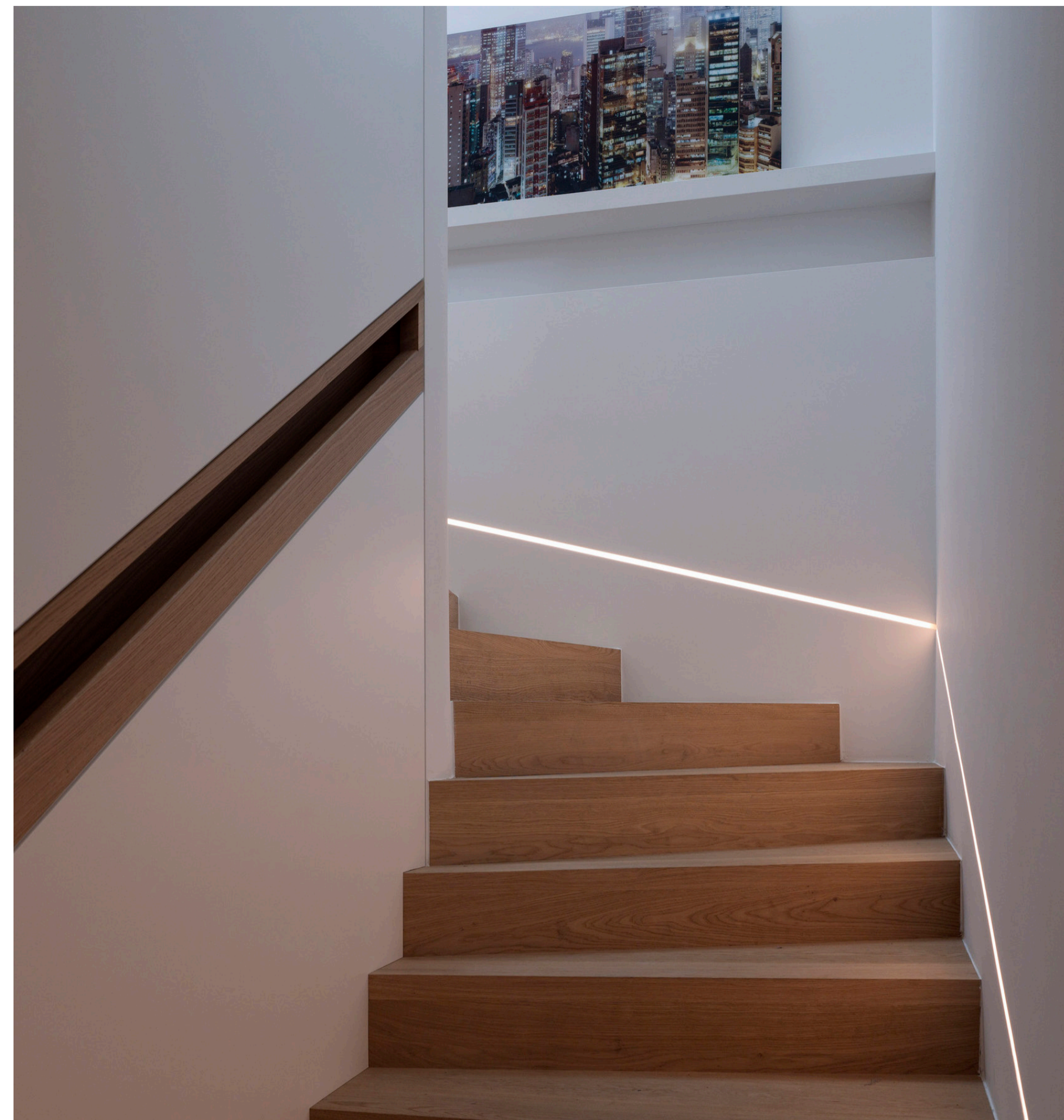
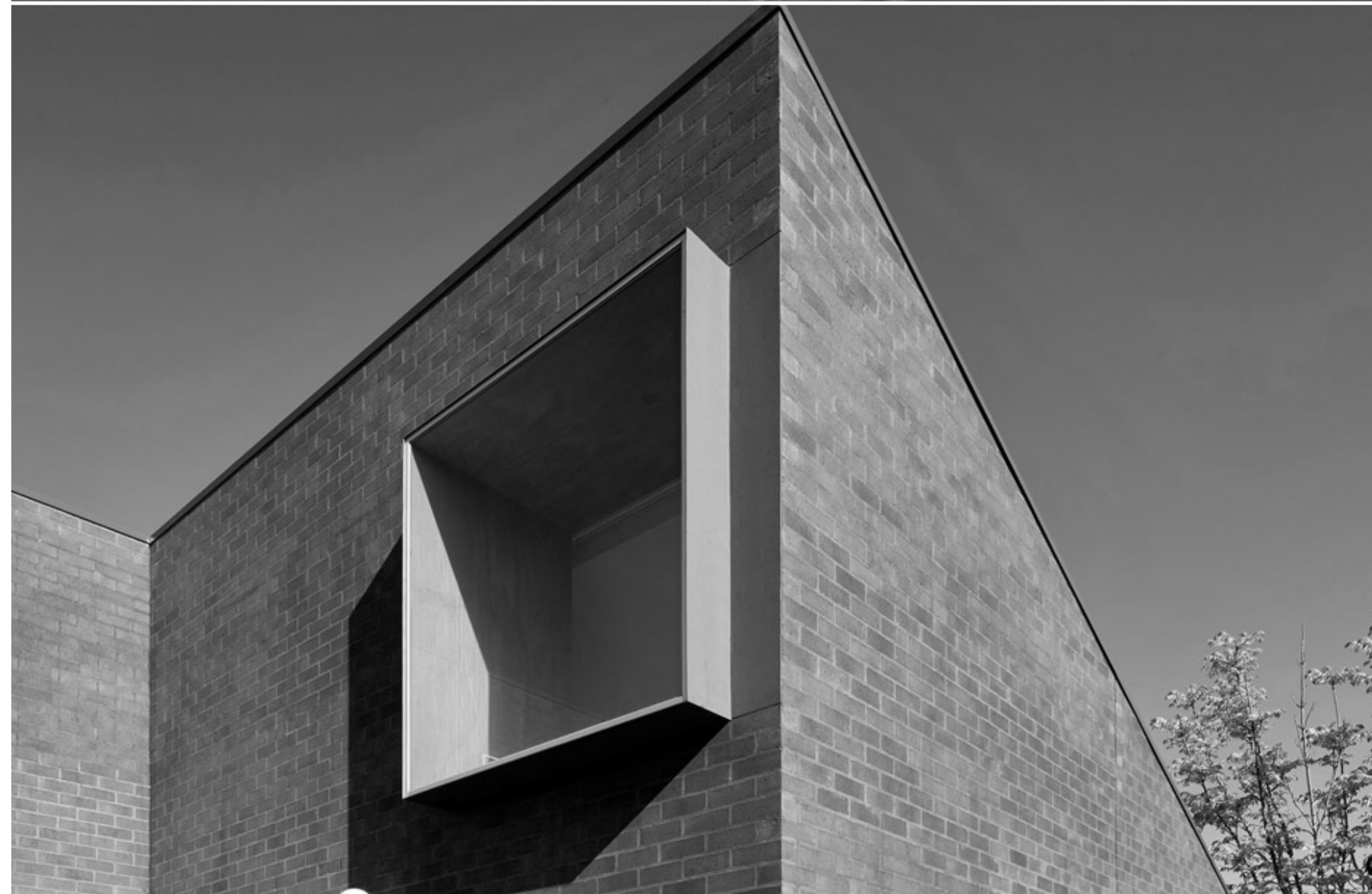
KERBEY STREET VIEW



SECTIONAL PERSPECTIVE CUTTING THROUGH COURTYARD PLAY AREA



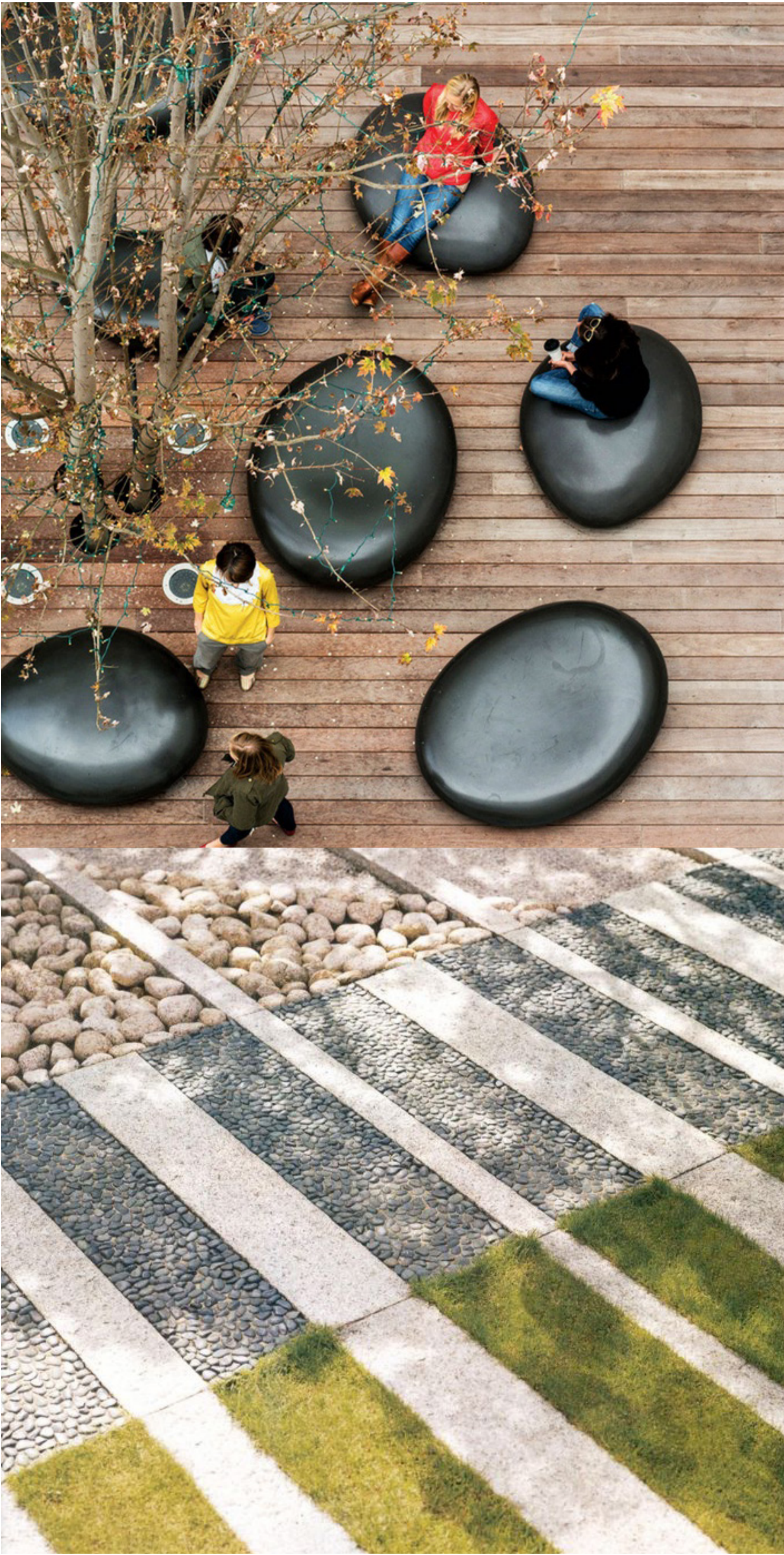
ARCHITECTURE & INTERIORS PRECEDENT - Illustrative Only



VIEW FROM NORTH WEST

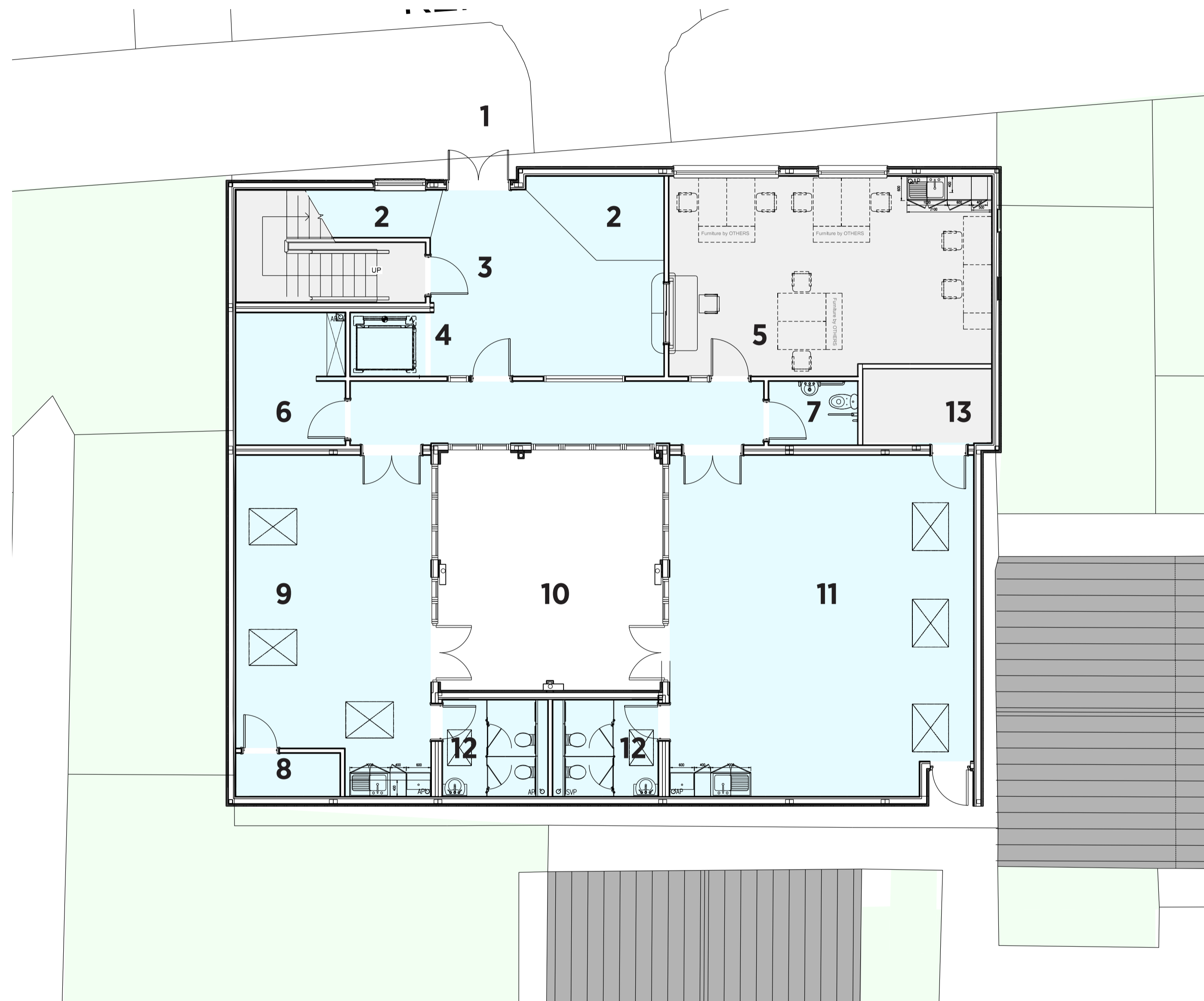


LANDSCAPE & PLAY PRECEDENT - Illustrative Only - 20% more external play space than the existing Children's Centre



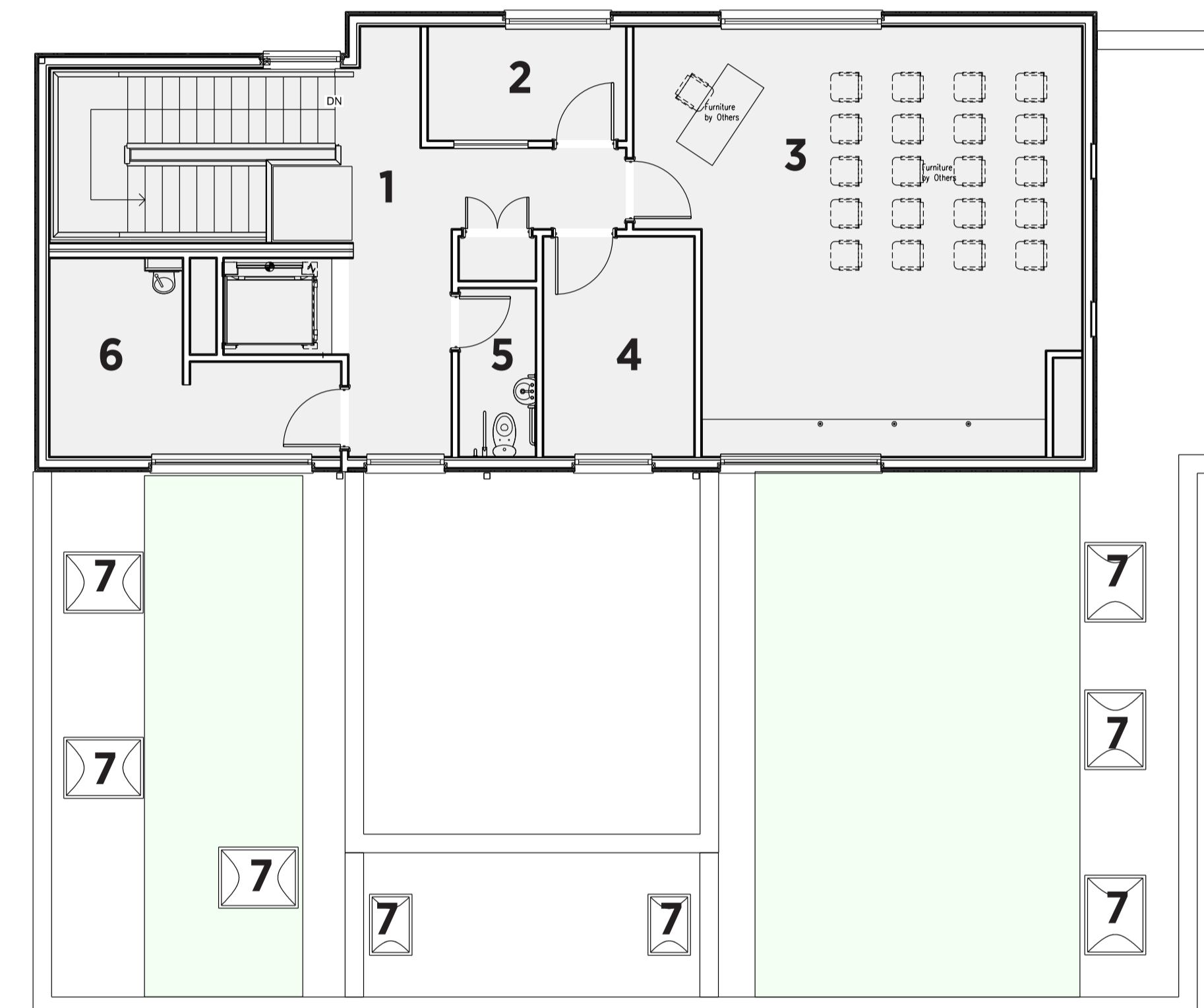
GENERAL ARRANGEMENT PLANS - Updated plans agreed with the London Borough of Tower Hamlet

GROUND FLOOR PLAN



1. Main Entrance from Kerbey Street
2. Buggy Store
3. Reception & Waiting Area
4. Lift & Stairs
5. Office
6. Toy Library
7. Fully-accessible WC & Baby Changing Facilities
8. Storage
9. Creche
10. Courtyard Play Space for 24 Under 5's
11. Playroom
12. WCs / Baby Changing Facilities
13. Plant

FIRST FLOOR PLAN



1. Lift & Stairs
2. Interview Room
3. Training Room
4. Kitchen / Staff Room
5. Ambulant WC
6. Medical Room
7. Rooflights to provide natural light to Ground Floor Rooms
8. Green Roof with Fall Prevention Safety Wireline