

Hanbury Street, Whitechapel: Consultation Event, November 2017

What are the key objectives for new council-built homes?

- Provide a mix of good quality well-designed sustainable new homes that are economical to run
- Deliver schemes of the highest design and architectural quality that contribute to improved public realm
- Actively involve residents in the place making process

Why is this development being proposed?

The ambitions in the Council's Community Plan are to make the borough 'a great place to live' and 'a safe and cohesive community', ensuring that new development helps to create successful places where local people can thrive.

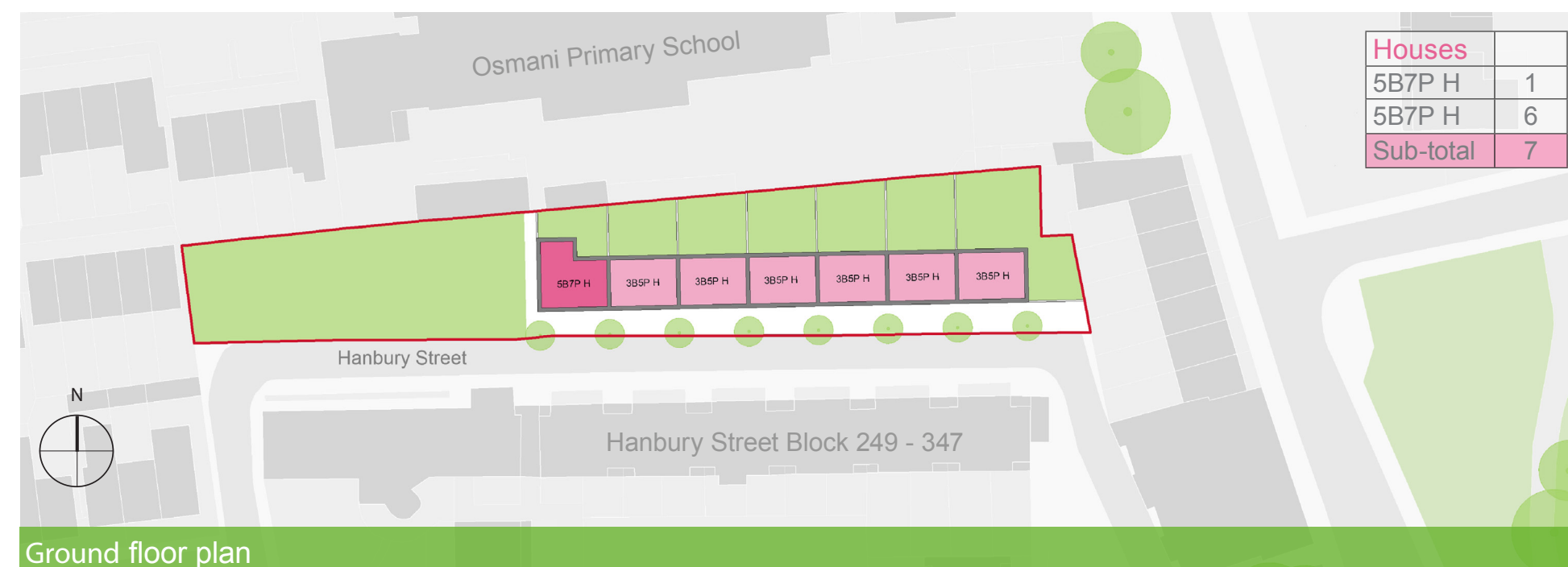
The Mayor is committed to the delivery of 1,000 new council homes that are genuinely affordable, being let on social rents or Tower Hamlets Living rents.



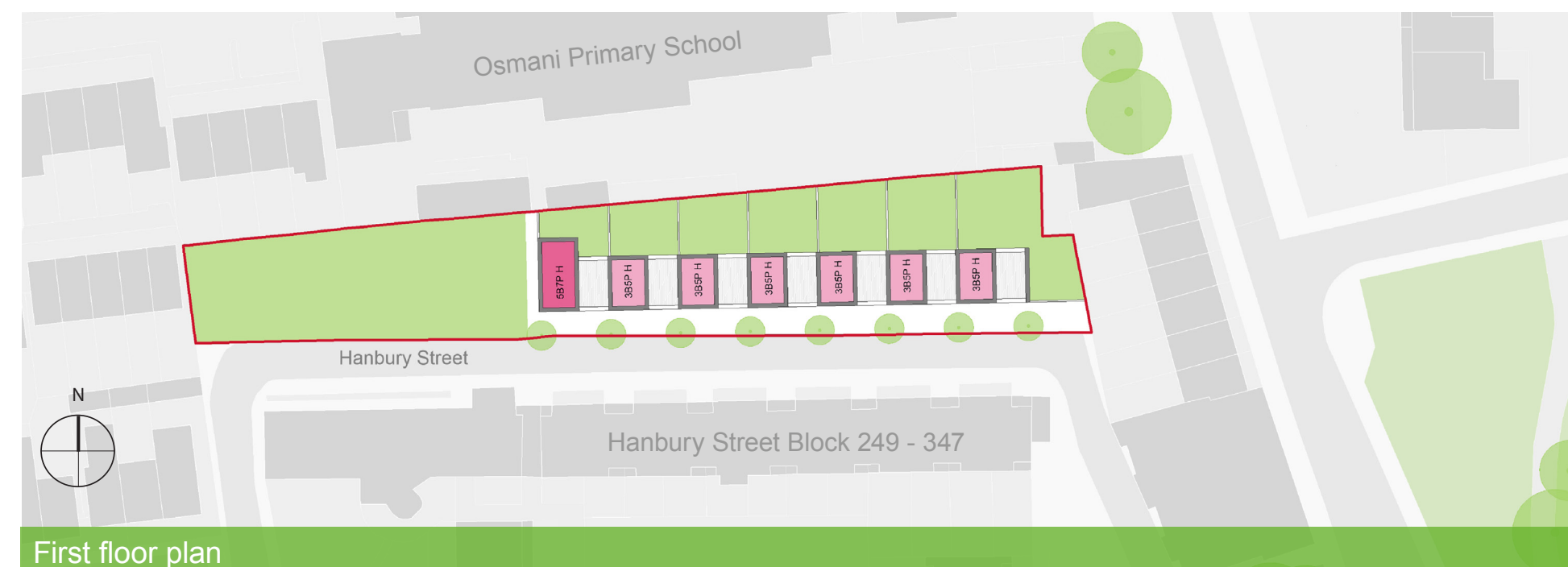
Perspective view from Hanbury Street



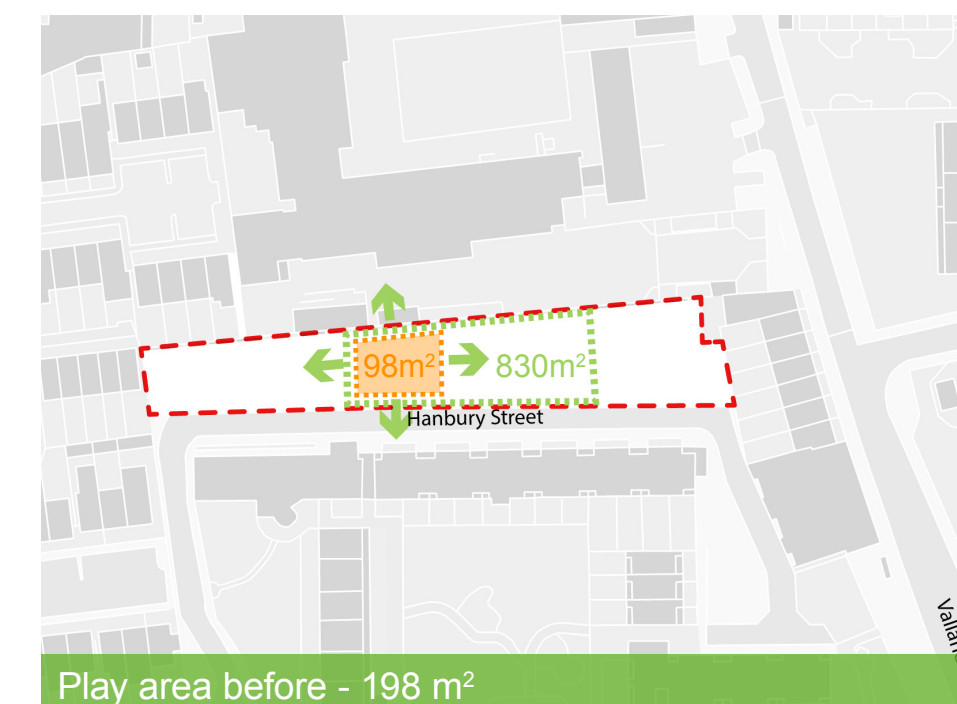
Perspective view from Hanbury Street



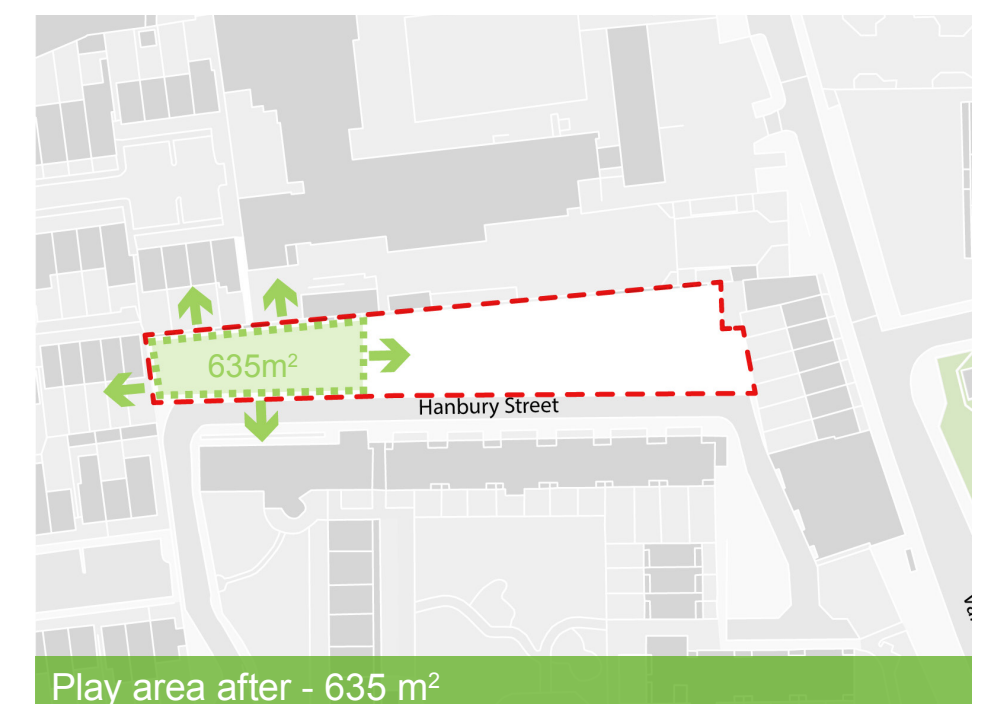
Ground floor plan



First floor plan



Play area before - 198 m²



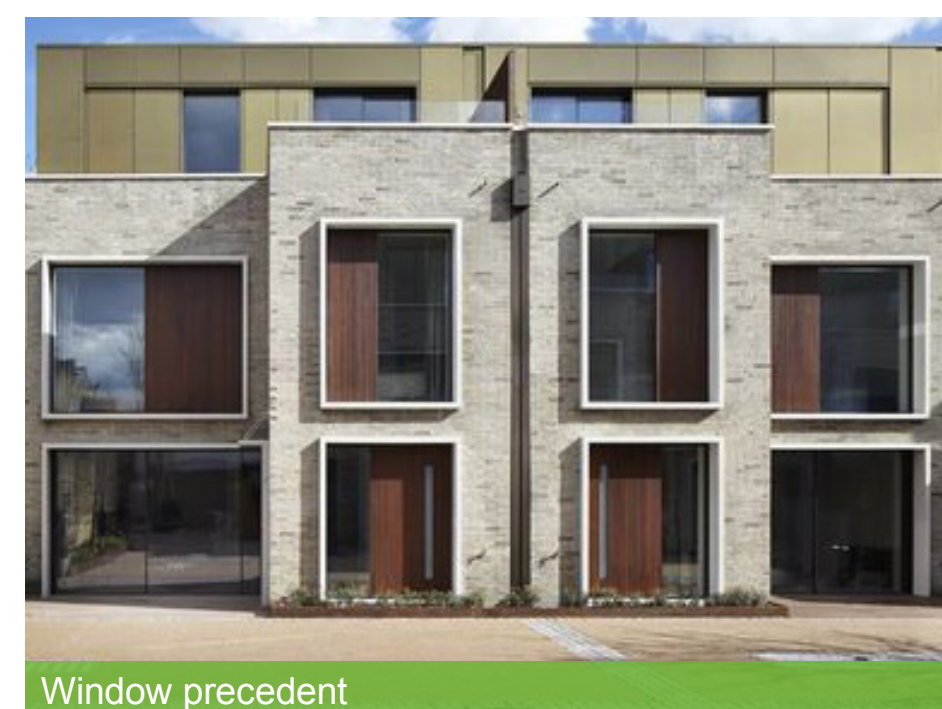
Play area after - 635 m²



Opaque window precedent



Brick & window detailing - Hitchin Square



Window precedent



Windows precedent - Chobham Manor



Articulation at ground level



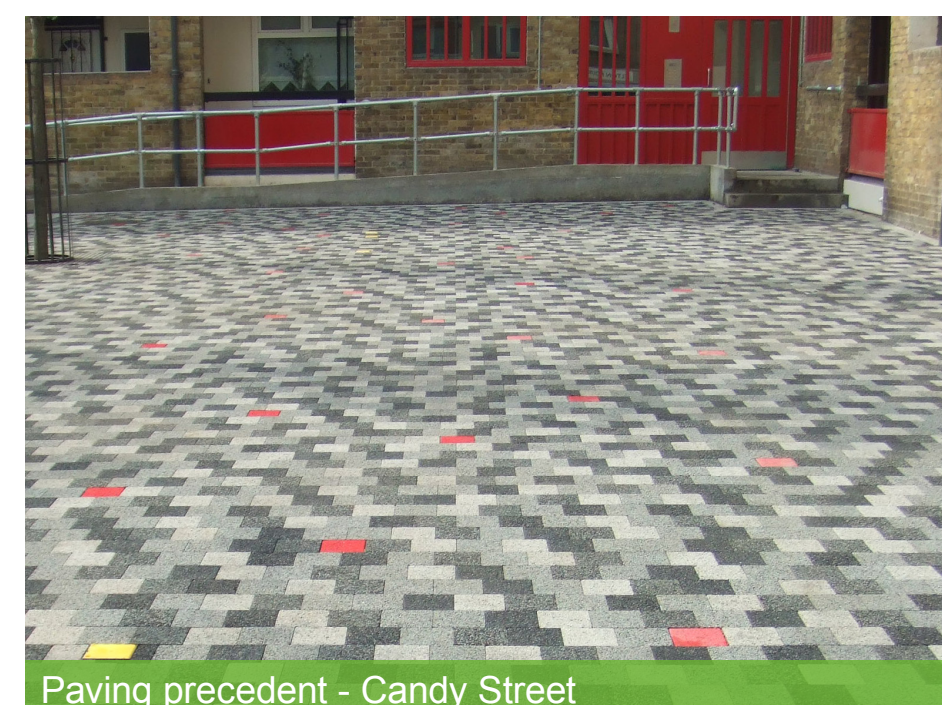
Window grouping - Hitchin Square



Play elements - St Stephen's Green



Paving precedent - Hitchin Square



Paving precedent - Candy Street



Green space - Hitchin Square



Landscape architecture - Candy Street



Playground - Candy Street