

HEALTHIER LIVES



Keep Covid-safe
during the festive
period

SEE PAGES 4-7

CELEBRATING OUR BOROUGH



Campus life at
Queen Mary
University

SEE PAGES 12-13

COUNCIL NEWS



Victoria Park
scoops more
awards

SEE PAGE 29

ISSUE NINETEEN // DECEMBER 2020



OUR EASTEND



Best school in England

Mayflower named best state primary school – see page 8

Children's Centres remain open for families

All 12 of the Tower Hamlets Children's Centres remain open and are providing a mixture of face-to-face and online sessions.

Services and sessions

We have adapted our services to be Covid-secure and deliver:

- Stay and play
- Family support
- Universal health services
- Employment training
- Education advice

Many centres have also introduced 'walk and talk' sessions, which means families can receive support and advice whilst meeting our experts outside.

**Doors are open
Monday to Friday,
8.30am –
5.00pm**

Information and advice

If you are concerned about your child's development, contact your local Children's Centre for advice. If your child attends a childcare setting, talk to the Inclusion Coordinator in the setting and you can also get advice from the Inclusion Team on 020 7364 1553.

Free childcare

To learn if you are eligible for free childcare call 020 7364 1553 (Monday to Friday, 9am-5pm).



Visit
www.towerhamlets.gov.uk/childrenscentres
to learn more.

OUR EAST END

NEWS FROM TOWER HAMLETS COUNCIL AND YOUR COMMUNITY

As 2020 draws to an end we reflect on what has been an extremely challenging year.

We think of those that lost their lives and been affected by Covid-19 and thank our key workers who have been there for us throughout the year. The economic impact has been felt by many residents and businesses and will continue to affect us for some time.

I hope that with talk of a vaccine there may be some light at the end of the tunnel. Until then we must keep following the government's rules which are there to keep us safe. That means continuing to do the basics of wash your hands, cover your face and make space as well as booking a test if you show any symptoms of Covid-19.

As a council we stepped up this year and continue to provide support to our most vulnerable. We've had to change the way we deliver services and this has shown both the value of the council and our ability to adapt and to work successfully with our Voluntary and Community Sector and other partners. From providing PPE, to housing rough sleepers, supporting people who are shielding or feeding children in the school holidays, we have been there for our residents this year and we have seen a fantastic community spirit.

While Covid-19 has dominated 2020, 'business as usual' has continued and that means delivering new council homes, helping residents get into training and work and cleaning up our streets.

We have just consulted on our budget as we continue to have to make savings due to government cuts. We've also moved to online council meetings and held online 'Ask the Mayor' events – although it has been harder to see people face-to-face I remain committed to being open and accountable.



I wish readers as good a seasonal break as is possible in these circumstances. Merry Christmas and I hope people have a chance to see friends and family where they can and let us hope 2021 brings relief and renewal and some return to a normal life for you all.

As ever, you can get in touch with me by emailing mayor@towerhamlets.gov.uk or calling 020 7364 4000.

John Biggs,
Mayor of Tower Hamlets

4-5 // *Healthier lives*

Following the Covid-19 tiers, staying Covid-19 safe during the festive season, how to get ready for winter, call for donations – emergency food appeal.

8-9 // *Young people and families*

Mayflower takes top honours, funding boost for two new secondary schools, first specialist college for autistic students set to expand, Christmas card winners.

11 // *Clean & green*

Crackdown on flytipping, Tower Hamlets at your fingertips.

12-13 // *Celebrating our borough*

Queen Mary University London: living and learning in Tower Hamlets.

15 // *Jobs & economy*

£200 million lifeline for businesses hit by pandemic restrictions.

16-17 // *Spotlight*

Keeping Tower Hamlets and safe.

18 // *Safer Together*

Fight to tackle drugs continues.

21 // *Housing*

New homes named after 'The Singing Mayor', local housing projects win top awards.

22-24 // *Walk with Graham Barker*

Building communities.

25-26 // *Arts & events*

Year of the Ox, Holocaust Memorial Day 2021, Canary Wharf's 'open air gallery', grand musical walk, what's on.

27-29 // *Council news*

Make a date for important polls, census day is coming, digital revolution sparked by lockdowns, asthma campaign wins award, Victoria Park voted the best in the

UK, make volunteering your New Year's resolution, housing fraud couple face Wapping bill.

30-33 // *Community news*

Tackling digital exclusion, running for mental health, toy appeal, former England footballer makes virtual visit,

Tower Hamlets first healthy, affordable food store, getting through 2020 together.

34-35 // *Council news*

Let's Talk Tower Hamlets, Bow liveable streets, A12 noise barrier a UK first, free winter meals for children, help us to save £30 million in latest budget, borough partnership column.

36-37 // *Harmony*

Council news in Bengali and Somali.

38-39 // *History*

Winter is coming.

40-41 // *Know your council*

Contact details for the mayor and councillors.

42-43 // *Useful information*

Election of the new Speaker, have your say on BAME Inequalities Commission, meeting dates and how to get in touch.



Our East End is produced by: Tower Hamlets Council

Editorial enquiries: 020 7364 4389

Email: communications@towerhamlets.gov.uk

Advertising enquiries: 020 7364 6005

Printed by: Reach Printing Services

Distributed by: London Letterbox Marketing

Sign-up to Tower Hamlets news

Find out what's on, get Tower Hamlets news, take part in competitions and receive local offers straight into your inbox!

Visit www.towerhamlets.gov.uk/signup



Facebook
[/Towerhamletscouncil](https://www.facebook.com/Towerhamletscouncil)



Twitter
[@TowerHamletsNow](https://twitter.com/TowerHamletsNow)



Instagram
[@TowerHamletsNow](https://www.instagram.com/TowerHamletsNow)

Following the Covid-19 tiers

HEALTHIER LIVES

At the time of publication (11 Dec), Tower Hamlets is in Tier 2 – high alert. However, rates have continued to rise in some areas, particularly north east London. Tower Hamlets' rating may change when the tiers are reviewed on December 16 and at regular intervals after that.

Below we outline some of the key restrictions for Tiers 2 (high alert) and 3 (very high alert). The full restrictions can be found at gov.uk/coronavirus.

Both Tier 2 and 3:

- **Work and business:** Everyone who can work from home should do so.
- **Retail, entertainment, personal care and indoor leisure:** Open.
- **Education:** Early years settings, schools, colleges and universities open. Childcare, other supervised activities and childcare bubbles permitted.
- **Places of worship:** Open, but cannot interact with anyone outside household or support bubbles.
- **Exercise:** Classes and organised adult sport allowed outside but not indoors if it involves people from different households. Organised activities for elite athletes, under-18s or disabled people allowed. (Note: contact activity should be avoided in Tier 3).
- **Indoor leisure:** Open (Note: no group activity in Tier 3).
- **Weddings and funerals:** 15 guests for weddings, civil partnerships, wedding

receptions and wakes; 30 for funerals. (Note: Wedding receptions not allowed in Tier 3).

Differences between Tier 2 and 3

Meeting family and friends

- Tier 2: No mixing of households indoors apart from support bubbles. Max. of six outdoors.
- Tier 3: No mixing of households indoors or most outdoor places, apart from support bubbles.

Bars, pubs and restaurants

- Tier 2: Pubs and bars must close. Hospitality venues can only serve alcohol with substantial meals. No orders past 10pm. Must close at 11pm.
- Tier 3: Closed except for takeaway or delivery.

Entertainment

- Tier 2: Open.
- Tier 3: Indoor venues closed.

Overnight stays

- Tier 2: Permitted with household or support bubble.
- Tier 3: Advise against overnight stays other than household or support bubble.

Travelling:

- Tier 2: Reduce the number of journeys you make. Avoid busy times on public transport. Avoid entering a Tier 3 area unless absolutely necessary.
- Tier 3: Avoid travelling outside your area, other than where necessary such as for work or education.

Accommodation:

- Tier 2: Open.
- Tier 3: Closed.

No matter what tier – protect yourself and others

Remember: Hands, Face, Space

If you have any symptoms of Covid-19 you must book a test. Symptoms include:

- A high temperature.
- A new or continuous cough.
- A change or loss to your normal sense of smell or taste.

We now have four testing sites in Tower Hamlets. Tests can be booked by calling 119 or online www.nhs.uk/coronavirus.




Test and Trace

PROTECT YOURSELF AND OTHERS







HANDS
Wash hands regularly



FACE
Wear a face covering

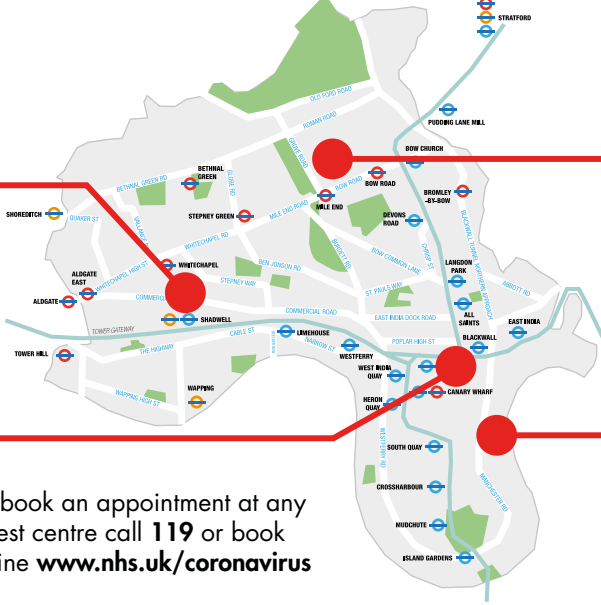


SPACE
Keep a safe distance

Test and Trace

TESTING CENTRES IN TOWER HAMLETS



Idea Store Watney Market
260 Commercial Street
E1 2FB
Monday – Sunday
8am – 8pm

Billingsgate Market
Mobile testing unit
Trafalgar Way
E14 5ST
Every three days
10.30am – 3.30pm

Mile End Arts Pavilion,
Clinton Road
E3 4QY
Monday – Sunday
8am – 8pm

Jack Dash House
2 Lawn House Close
E14 9YQ
Monday – Sunday
8am – 8pm

To book an appointment at any test centre call 119 or book online www.nhs.uk/coronavirus

Staying Covid-19 safe during the festive season

With the festive season approaching we know many residents will be looking forward to celebrating with their families.

Between 23 and 27 December, people can form a bubble of up to three households. While this is allowed under government guidelines, please be cautious, especially of anyone who may be more vulnerable including the elderly and those with existing health conditions.

Mixing between households remains the main way Covid-19 is being transmitted in Tower Hamlets, so think carefully before coming together with other households, even over the festive period.

If you do form a festive bubble (a maximum of three households), find out how to stay safe and take precautions at home

www.towerhamlets.gov.uk/coronavirus



Where to go for help

Go online

www.towerhamlets.gov.uk/coronavirus for council information and support

www.towerhamlets.gov.uk/homeresources for fun activities and ideas to stay active

www.towerhamlets.gov.uk/selfisolation if you're self-isolating and need help or support

www.nhs.uk/coronavirus for the latest NHS information, advice and to book a test

www.111.nhs.uk/covid-19 to check your symptoms with the NHS

www.gov.uk/coronavirus to keep up to date with government guidance and support

To book a Covid-19 test call **119**

For medical help by phone call your GP or **111**

If urgent, call **999** (or go to your nearest A&E department)

For urgent help, advice and support from the council call: 020 7364 3030

Wixii caawimaad ah, talo iyo taageero:

Lahadal **020 7364 3030**
ama booqo

সাহায্য, পরামর্শ এবং সহায়তার জন্য কল করুন: **020 7364 3030** অথবা
ভিজিট করুন

Other phonelines:

Concerns about children and young people

020 7364 5006

Adult safeguarding

020 7364 5005

Trading standards

020 7364 5008

Domestic abuse

0800 2000 247

Department for Education helpline

0800 046 8687

Council tax

020 7364 5002

How to get ready for winter

Here are some top tips on being prepared and staying well. For more like these visit www.towerhamlets.gov.uk/winter

You can get a free flu jab if you're aged over 65, are pregnant or have a long-term health condition. Speak to your GP or pharmacist or book your jab at www.myvaccinations.co.uk



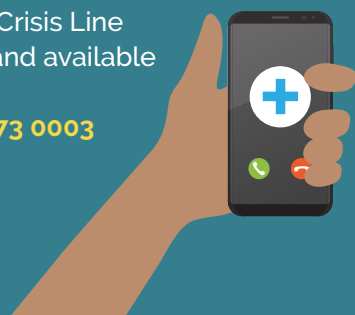
Covid-19 has had an impact on all of us, so it's more important than ever to stay safe and healthy. Find out the latest updates at www.towerhamlets.gov.uk/coronavirus



Take care of yourself and people in your community who may be more vulnerable. Find information on local services for those who may be isolated and experiencing loneliness: www.towerhamlets.gov.uk/loneliness



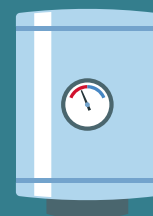
Need to speak to someone? The Tower Hamlets Mental Health Crisis Line is free and available 24/7: [0800 073 0003](tel:08000730003)



Stay active by wrapping up warm and getting outdoors if you can. Go for a walk, cycle, jog or play with your children. Even just moving for 20 minutes a day can make a difference to your overall mental and physical wellbeing.



Keep your home warm by setting your heating to the right temperature (18-21°C). You can contact a Gas Safe registered engineer to make sure your appliances are operating properly and safely www.gassaferegister.co.uk



Have hot meals and drinks throughout the day and eat plenty of fruits and vegetables – frozen and tinned count too. Remember to stock up on basic items including canned and tinned food and medicines for coughs and colds.





Staff and volunteers helping with food distribution at Mayfield House

Call for donations – emergency food appeal

The council has launched a fundraising campaign to make sure people don't go hungry this winter amid the ongoing challenges of the Covid-19 pandemic.

The appeal, which is on behalf of 31 food banks in Tower Hamlets, is looking to crowdfund at least £5,000 a month towards the cost of providing food support to vulnerable residents.

Many local food providers have seen an unprecedented rise in demand and are now reaching crisis point.

Since the start of the pandemic, Tower Hamlets Council has distributed 190 tonnes of food to those in need and invested £950,000 through its resident support scheme. Despite this, the need is greater than ever this year.

The council has provided funds and resource to support this vital service, and now, in partnership with the borough's food banks, we are asking partners, business and residents to please donate to our crowdfunding campaign.

If you would like to donate, please visit www.spacehive.com/tower-hamlets-food-appeal#/idea.

Alternatively, if you would like to volunteer your time, please visit www.vctb.org.uk/ for more information and to sign up.

This year has been challenging for everyone, but no family should be without the basic essentials. Please show solidarity and help us to support our community.



Tower Hamlets
**COVID-19
COMMUNITY CHAMPIONS**

Our Covid-19 community champions network is vital in helping share and keep our community up to date with the latest advice around Covid-19.

If you're interested in helping share information and keep friends, family and the wider community safe, sign up online www.towerhamlets.gov.uk/covidchampions.

Together we can help keep Tower Hamlets safe.





Children from Mayflower prepare for an art class

Mayflower takes top honours

YOUNG PEOPLE AND FAMILIES

Mayflower Primary School has been named The Sunday Times State Primary School of the Year 2021 by Parent Power, The Sunday Times Schools Guide.

The 28th edition of Parent Power identifies the 2,000 highest-achieving



Dee Bleach, headteacher of Mayflower Primary School

8 // Our EastEnd DECEMBER 2020 //

schools in the UK, ranked by their most recently published exam results.

John Biggs, Mayor of Tower Hamlets, said: "Congratulations to all of the staff at Mayflower Primary School. This year, we have learned the true value of our schools, not just as places of learning but as vital institutions that raise a generation of children whilst supporting entire communities. Nowhere is this truer than in Tower Hamlets."

Mayflower Primary School tops The Sunday Times primary school rankings for the second year running.

It was one of six schools from Tower Hamlets to appear in the Top 500 state-funded primary schools - from over 15,000 in England - alongside St. Edmunds (90); Sir William Burrough (117); Blue Gate Fields Junior (153); Bigland Green (228) and; English Martyrs (368).



The Queen visits Mayflower Primary School in June 2017 to mark the 100-year anniversary of its attack by enemy aircraft during WW1

Funding boost for two new secondary schools

Two new secondary schools and the rebuild of another school moved a step closer to being built after Tower Hamlets Council secured £47m of funding.

The money from the Department for Education (DfE) will go towards the cost of building a new school on the site of London Dock in Wapping. The DfE will also develop a new permanent home for a secondary free school, Canary Wharf College, on the Westferry Printworks site on the Isle of Dogs.

These agreements could also allow the council to release funds to rebuild George Green's School on the Isle of Dogs, subject to a feasibility study.

The total cost of building London Dock School will be £52 million, delivered by Mulberry Schools Trust, which currently operates three schools in Tower Hamlets.

Additional funds will come from planning contributions which are paid by developers to go towards social infrastructure such as schools, healthcare and transport.

Cllr Danny Hassell, Cabinet member for Children and Schools, said: "Investing in schools means investing in



Investing in schools means investing in the future of children and young people in our borough.

the future of children and young people in our borough. I'm delighted to have agreed this funding which will mean we have enough secondary school places to meet demand.

"I'm pleased at the possible rebuilding of George Green's School, whose building is wearing out, and which will allow them to build on recent improvements and improve their offer of a great education in a great new setting."

First specialist college for autistic students set to expand

Phoenix College is moving to a new home in Bow after opening in September as the borough's first specialist college for autistic students.

The college, set up by the Phoenix Autism Trust with the support of the council, is currently being hosted by New City College in Poplar. It teaches life and employment skills helping students to live more independently, realise their potential and lead productive adult lives.

Partnerships with local organisations and businesses allow students to make informed choices about what type of work they want to pursue based on their experience. This includes nine-month internships for those aged 16 to 25 with learning difficulties or autism.

They are supported every step of the way by a mentor who has daily contact with them, their tutor and a job coach, and the internships have led to full-time job offers from companies including G4S and Home Bargains.

For information about Phoenix College, write to info@phoenixcollege.london or call 020 8980 4740 to learn more or ask about applications for September 2021.



An intern supporting grounds and maintenance at Queen Mary University London.



Ten year-old Esther Noble-Stein holds her winning design



Winning designs from Claudia Febo and Sumeet Mojumder

Christmas card winners

Winners of this year's Christmas Card competition will see their designs used as electronic cards by Tower Hamlets Council this year.

John Biggs, Mayor of Tower Hamlets, Will Tuckley, the council's Chief Executive and James Thomas, Corporate Director of Children and Culture had the difficult task of selecting three winning designs from more than 70 entries by children between the ages of five and 11.

Ten year-old Esther Noble-Stein of

William Davis Primary School designed the mayor's card which features the borough's logo as the pot for a Christmas tree; eleven-year-old Claudia Febo's artistic drawing of Santa and his reindeers whizzing under Tower Bridge is on the chief executive's card; and Osmani Primary School pupil Sumeet Mojumder's picture of Father Christmas and a snowman posing by a Christmas tree is on the front cover of the corporate director's card.



Other entries for the Christmas card competition

Domestic, Recycling and Commercial Waste Collections

Christmas and New Year 2020/2021

Over the bank holiday period there will be changes to your normal rubbish, recycling, food and garden waste collection arrangements.

Friday 25th December	Christmas Day	No Service
Saturday 26th December	Boxing Day	25th Dec Collection
Monday 28th December	Bank Holiday – Boxing Day	Normal Service
Tuesday 29th December		Normal Service
Wednesday 30th December		Normal Service
Thursday 31st December		Normal Service
Friday 1st January	New Year's Day	No Service
Saturday 2nd January		1st Jan Collection
Monday 4th January		Normal Service

*Please ensure your waste and recycling (including food and garden waste) is available for collection before 7am on your scheduled collection day.

Christmas tree recycling



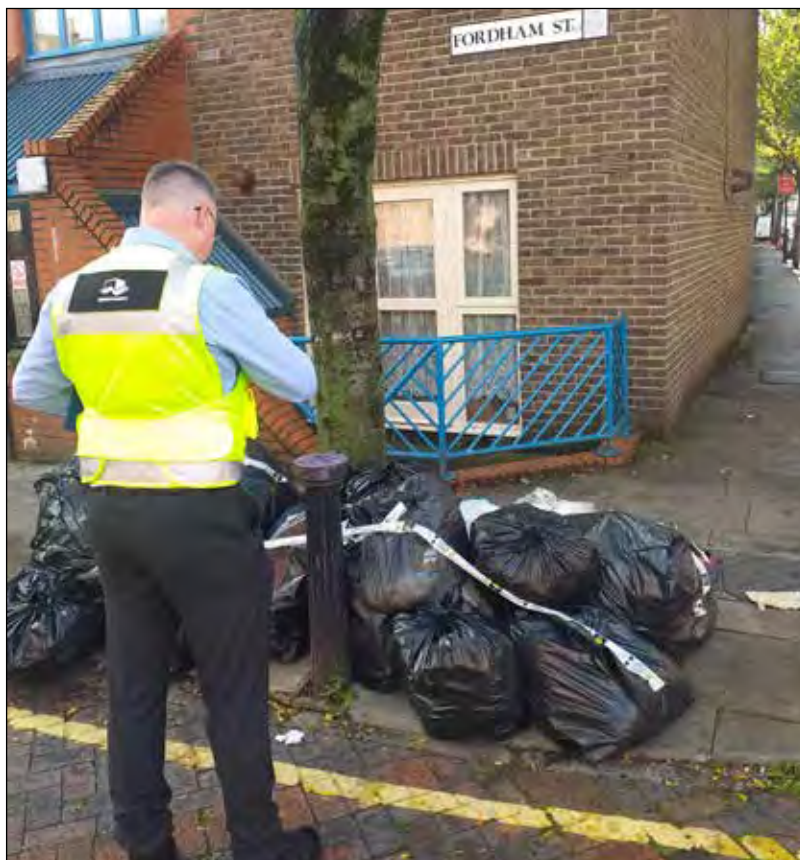
There will be a collection for the recycling of real Christmas trees from 4th to 18th January 2021

If you currently receive a kerbside food and garden waste collection, please remove any decorations from the tree and leave out for collection on your scheduled day during this period. If you do not have kerbside services, please contact your property landlord or management company who can arrange collections from the nominated communal collection points.





Our environmental services team ready for a patrol and an officer inspects some flytipped waste in Fordham Street



Crackdown on flytipping

CLEAN & GREEN

Tackling flytipping is the name of the game for the council's environmental support officers who are determined to crack down on illegally dumped waste.

Flytipping is a growing problem in Tower Hamlets, with the council spending more than £690,000 a year on its removal and disposal – money that could be better spent elsewhere.

Officers have been pounding the streets during the colder months to step up enforcement during 'days of action' in Whitechapel and Weavers. The council is running monthly group patrols in areas with high levels of flytipping, on top of the work already carried out by waste crews.

John Biggs, Mayor of Tower Hamlets, said: "Flytipped waste is a blight on our borough and it is ultimately residents who have to pay the price of the costly collection of dumped rubbish on our streets.

"Although our officers have been focusing on businesses as the worst offenders, residents must also take responsibility for their waste.

"Most people take pride in their neighbourhood and we are committed to working with residents and businesses

to keep our streets clean."

In line with government guidelines, the council was concentrating on critical waste collection services when the Covid-19 pandemic hit earlier this year, but since the start of October the council has issued more than 70 fixed penalty notices (FPNs) to repeat offenders.

The decision to increase the FPN for flytipping to £400 from £80 – with no early payment option – was made in February.

The previous £80 fine was the same penalty that was faced by those who dropped litter. The increased levels reflect the more serious and costly nature of flytipping.

Some businesses in the borough had previously been issued with multiple £80 FPNs yet continued to flytip because it was cheaper to pay the fine if caught than to organise the lawful disposal of their waste.

Money received from the fines is being spent on waste management, street cleansing and enforcement.

There will continue to be a focus on communication, education and advice to businesses about their duties and responsibilities regarding waste management.

Action days undertaken so far have also given environmental services

officers the chance to identify street issues such as graffiti to be cleared by waste crews.

The council will continue to work with landlords and residents, particularly those who rent or live in properties above shops without adequate provision for storage.

Our environmental services team has also been working with the police to conduct waste carrier vehicle checks. Those carrying waste through Tower Hamlets without a licence or the correct documentation you could face a fine.

If drivers are caught flytipping, the council has the power to seize vehicles and offenders could face an unlimited fine or a custodial sentence.

Residents can report dumped waste via the council's online form by visiting towerhamlets.gov.uk/flytipping.



Illegally dumped rubbish along Bethnal Green Road

The council spends more than £690,000 a year on the removal and disposal of flytipping – money that could be better spent elsewhere.

Tower Hamlets at your fingertips

Don't forget, the Love Your Neighbourhood app is available to download.

You can use the app to report any council issues, share things that you love about the borough, access air quality data, see road closures and events, find out about waste and recycling collections and much more.

To start making use of the app, simply search 'Love Your Neighbourhood' in the Apple or Google Play stores.





Queen Mary University London students sit by the canal on the Mile End campus

Queen Mary University: living and learning in Tower Hamlets

CELEBRATING OUR BOROUGH

Philippa Lloyd joined Queen Mary University London in 2019 to lead the university's approach to partnerships and social responsibility. Philippa reflects on Queen Mary's place in east London, the whirlwind of 2020, and her hope for what's next.

"We're proud of our place in east London: it's our home.

Our university's east London roots date back to around 1785, when England's first official medical school was set up right here in Tower Hamlets. Fast forward 100 years and Queen Victoria opened the People's Palace, built to provide educational and social opportunities to the people of east London. We didn't become Queen Mary until 1934, when the East London College was renamed after the wife of King George V, Mary of Teck.

Thanks to this history and the local area, a strong desire to be active in local life is embedded in our DNA, and realised daily through our activities

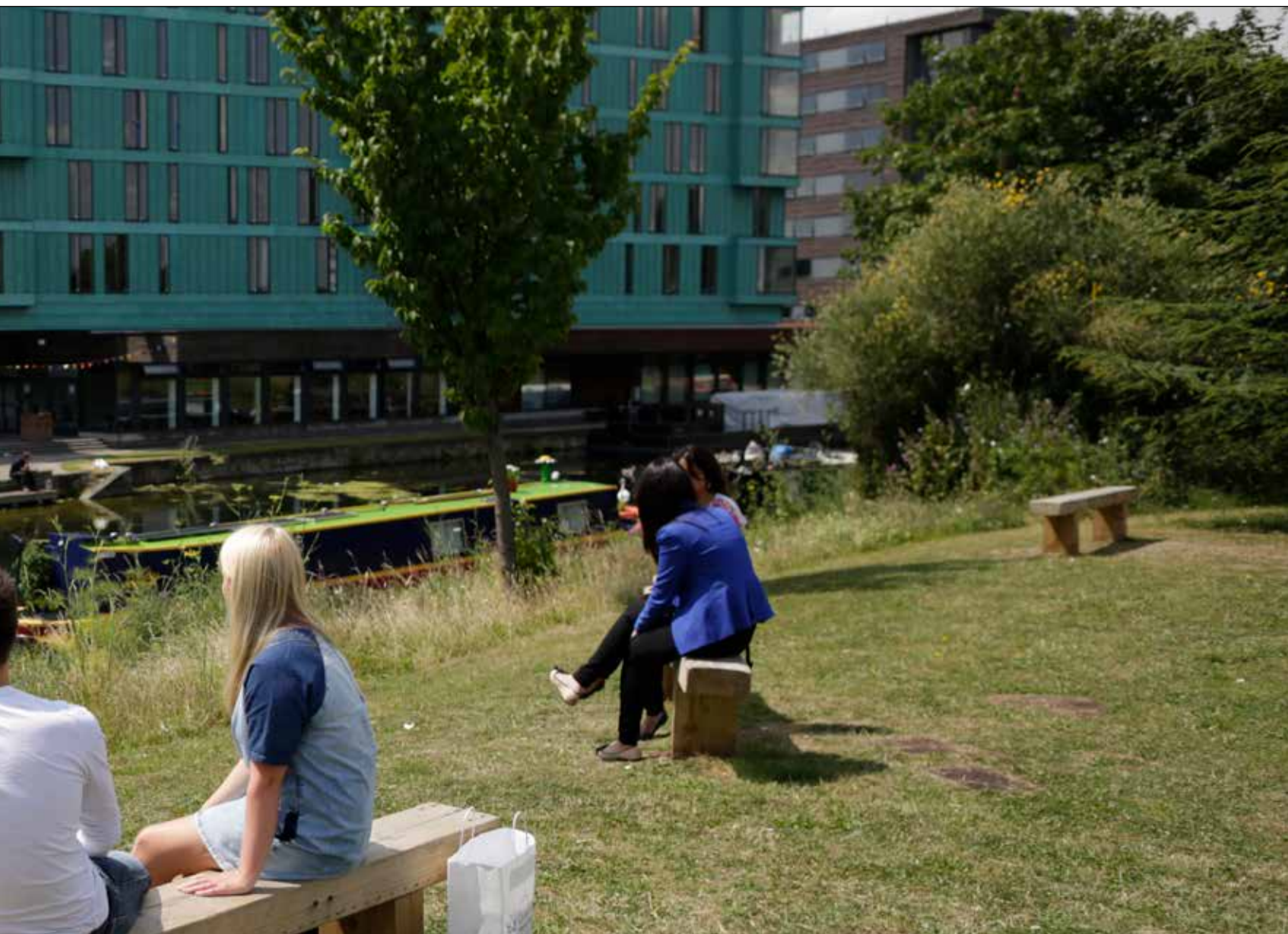
For example, we were proud to play a role in the recent Season of Bangla Drama, celebrating British-Bengali art and theatre. The People's Palace Projects, a charity based in our drama department, also uses art to explore social issues, both here in Tower Hamlets and around the world, from West Africa to South America.

Our Legal Advice Centre, which continues to offer free legal advice to local residents, businesses and organisations, recently launched the Black Justice Project to advise members of the Black community who may be facing discrimination. And we have a team dedicated to supporting young people, and their parents and teachers, as they prepare to leave school and embark on an exciting future.

We were the first university in the



A QMUL student ambassador welcomes a prospective student to the campus for a Covid-secure tour



UK to introduce the real Living Wage for all staff in 2006, one of the first to offer degree apprenticeships and, thanks to our outreach efforts, around 57 per cent of our students are the first in their family in higher education, around 70 per cent of our first-year students come from Black, Asian and minority ethnic households and around 35 per cent are from low-income households.

Our commitment to east London was brought into sharp relief this year by Covid-19. We have offered help in a number of ways: back in the spring we provided personal protective equipment (PPE) to local hospitals and hospices, we lent research equipment to the government and offered accommodation to NHS workers. Our researchers have turned their attention to finding ways to tackle Covid-19, most recently celebrating the launch of Bethnal Green Library as a uniquely located Barts NHS vaccine trial centre. And our catering team has worked with the council to offer free hot meals to local families during the Easter and October school holidays.

But with all we can do to help, we also understand that having a university on your doorstep in the midst of a pandemic can be a cause for concern. We're home to around 27,000 students, and while we're proud to welcome many from the local area (around 50 per cent of our

students come from within 15km of the University), they are joined by many more from across the UK and overseas. This makes for a vibrant student community, and please be assured that we are working hard to ensure the safety of our staff, students and residents.

Making our campuses, learning spaces and facilities as 'Covid-secure' as possible became the number one priority, with courses adapted to offer a blend of online and in-person teaching and experiences. This term has been a challenging experience for staff and students, but thanks to the steps we have taken, and the hard work and care taken by staff and students, we have so far seen very low numbers of Covid-19 cases within the university. Indeed, our health and safety team has recently been shortlisted for an industry award in recognition of the work it has done this year to make our campuses safe.

As we get closer to the end of the year, I'm sure I'm not the only one hoping for a different, brighter 2021. For now, we'll continue to put safety first, and find ways to adapt. Our Festival of Communities might not look quite the same, but we will make sure it's a chance to come together in some shape or form and celebrate living and learning in Tower Hamlets.

The end of the year is always a time

for reflection. At Queen Mary, we want to make sure we're playing an active, positive role in Tower Hamlets. We're reflecting on how we can best support you, with plans to launch a new commitment to east London in 2021.

Your views and perspectives on local priorities and opportunities are a vital part of that process. If you'd like to get

involved, you can join one of our focus groups or complete a quick survey (closes Sunday 17 January 2021) – we're listening."

Find out how to get involved: www.qmul.ac.uk/cua

Dr Philippa Lloyd, Vice-Principal (Policy and Strategic Partnerships) at Queen Mary University of London

Fingertip facts:

- Founded in 1785 as England's first official medical school
- Home is Tower Hamlets with two campuses (Mile End and Whitechapel) and a presence in Paris, Malta, Athens and Singapore
- Ranked 12th in UK and 110th in the world by Times Higher Education (THE) World University Rankings
- Offers 240 degrees across three faculties: Humanities and Social Sciences, Science and Engineering, and Medicine and Dentistry
- Twenty-seven thousand students and 4,600 members of staff
- Fifty per cent of students come from within 15km of the university
- Fifty-seven per cent of students are the first in their family to attend university
- Seventy per cent of first-year students come from Black, Asian and minority ethnic households
- Nine Nobel Prize winners amongst former staff and students

Learn more: <https://www.qmul.ac.uk/about/facts-and-figures/>



The Queen Mary Legal Advice Centre offers free legal advice to members of the public in the following areas of law:

- Employment (including discrimination)
- Landlord and tenant
- Consumer
- Contract
- Company
- Criminal
- Assistance with lasting power of attorney
- Special educational needs
- Family (incl. a specialist service for the LGBT community)
- Wills and probate disputes
- Immigration (incl. a specialist service for the LGBT community)
- A specialist clinic for victims of image based sexual abuse.
- Fitness to practice proceedings for Nurses and Midwives
- Actions against the police
- Assistance completing welfare benefit forms, mandatory reconsideration appeals and tribunal representation.

You can find out more information on our services here:

<http://www.lac.qmul.ac.uk/>

To book an appointment contact the Centre on **020 7882 3931** or **lac@qmul.ac.uk**.

All advice is given by supervised undergraduate law students in writing following an appointment. There are restrictions on maximum income for some of our clinics.



Sign up to get Tower Hamlets news

For Covid-19 advice and other local updates straight to your inbox, subscribe to our residents' e-newsletter and much more at www.towerhamlets.gov.uk/signup

For more information on the local response to Covid-19, visit www.towerhamlets.gov.uk/coronavirus or check out **#TowerHamletsTogether** and **#KeepTowerHamletsSafe** on social media.



Samiya

Class of 2020

Now studying Digital Media at Queen Mary's University

STEPNEY GREEN SIXTH FORM



Believe. Belong. Become.

Excellent Results 2020:

1 in 3 A level grades A* - A.

BTEC L3 average grade Distinction*.

Excellent Outcomes for BTEC L2



Abdullah

Class of 2020

Now studying Medicine at Aston University, Birmingham

APPLICATIONS FOR SEPTEMBER 2021 ARE NOW OPEN

Outstanding progression to top Russell Group Universities.



Dani

Class of 2020

Now studying Computer Science at Queen Mary's University

Stepney Green Sixth Form is an inclusive environment. Our students have a love of learning and grow within an environment that offers extra-curricular and enrichment opportunities. We place great importance on choice. Our academic pathways are designed around the abilities and career aspirations of our students and we are committed to providing a well-balanced and challenging curriculum for all.



Ismail

Class of 2020

Now studying Electronic Engineering at Imperial College

Apply online at www.stepneygreen.towerhamlets.sch.uk



Hands, face, space are the watchwords for shoppers to stay safe during the pandemic

£200 million lifeline for businesses hit by pandemic restrictions

JOBS AND ECONOMY

Businesses in Tower Hamlets have been supported with almost £200 million of grants and rate relief since the outbreak of Covid-19.

Shopkeepers, entrepreneurs and market traders ineligible for rate relief were able to apply for discretionary payments to help cope with the economic downturn.

With falling footfall and many premises forced to close, a range of grants was made available to provide a lifeline to businesses and protect jobs.

As restrictions continue into the winter, a second round of grants was made available in late November to support traders still striving to recover.

Aside from the financial help, the council's High Street and Town Centres team has been offering free training to help traders set up shop online and offer a home delivery service.

Irene Chew runs her Katsu Wraps stall at Petticoat Lane Market and says the Covid-19 restrictions means trade is currently about 80 per cent down on usual demand.

Irene, 37, said: "We've had to reduce from 20 employees to four or five and used online apps and our own staff to deliver food."

"The news about the vaccine is encouraging so we'll try to stay positive and do the best we can for our customers."

Sunil Khosla runs his jewellery and hair accessories stall in Whitechapel Market and has struggled with reduced

footfall due to the pandemic.

The trader said: "Sales are about 60 per cent down year-on-year so we're looking at developing a website and a home delivery service, but it's challenging for small businesses."

"We've received two grants from the council which helped but there was no government support as we don't pay business rates."

"I'm hoping that the council can invest in Whitechapel with the arrival of Crossrail and the new town hall bringing more people to the area."

For more details on the grants and making your business Covid-secure, visit www.towerhamlets.gov.uk/coronavirusbusiness

Grants and payments issued to November 2020

- £98m business rate relief
- £78m support grants
- £13.8m local restrictions grants
- £4m top-up grants



Irene Chew says the reduced footfall from office workers has affected lunchtime trade to her Katsu Wraps stall in Petticoat Lane Market



Restrictions on 'non-essential' retail have been tough for Sunny Khosla, a regular at Whitechapel Market for more than 30 years



Natalie Thompson with a face covering poster being provided to traders

Keeping Tower Hamlets safe

SPOTLIGHT COVID-19 COMPLIANCE

During the Covid-19 pandemic we've all had to adjust to a new normal and accept restrictions around how we socialise, work and travel.

Businesses in the borough, both large and small, are no exception and have been hugely impacted with restrictions around how they operate, when they open and close and making it mandatory to display public health messaging.

While the majority of businesses have played their part, following national guidelines and helping to keep Tower

Hamlets safe, some have not. Cue our environmental health-cum-Covid-19 compliance team!

Formed of environmental health, health and safety, licensing, food safety and trading standards officers – as well as four new recruits funded by central government – the team solely focuses on

compliance, with around 20 officers a day deployed around the borough. They work in shifts, with teams out during the day and evening, to ensure no businesses go unchecked.

Activities include visiting areas where the council has received reports about businesses and people not adhering to



Team members walking down Bethnal Green Road



Natalie Thompson leaving a shop after a compliance check



Amran Mohammed and Jacqueline Brown outside Bethnal Green station during evening compliance checks

Covid-19 guidance, supporting premises by positively giving advice on rules and regulations, and answering queries and issuing warnings or fixed penalty notices where guidelines are repeatedly ignored.

Natalie Thompson, Principal Environmental Health Officer, said: "While we have the power to issue fines to businesses who aren't complying with guidance, we always aim to engage and educate first. We know it is a tough time for everyone and in some cases, such as really small local businesses, they aren't always aware of all the guidance.

"Our approach, both before and during Covid-19, is to have positive relationships with traders, supporting and helping them where we can."

While compliance in the borough is generally good, the team recently found about 60 businesses operating outside of regulations out of over 5,000 observations, all undertaken while out on patrols.

Some of these were repeat offenders, having already received visits and warnings from the team. Rule breakers included non-essential retail staying open during the second lockdown at the end

of November, large organised gatherings and parties dangerously bringing many people together, and restaurants and cafés allowing customers to dine when this was against regulations.

To date, the team has issued over 150 warnings and fixed penalty notices, with repeat offenders facing fines of up to £10,000 for failing to close their businesses and adhere to national restrictions. Work with police partners has led to the closure of two large unlicensed music events and police will be looking at issuing the most serious offenders with fines of up to £10,000.

David Tolley, Head of Environmental Health and Trading Standards, said: "Our team has been working hard on the ground during Covid-19, ensuring compliance and supporting police where greater enforcement is needed to address those wilfully breaking the rules."

Reflecting the changing nature of Covid-19 regulations, the role of the team will evolve in line with national guidance, which keeps them on their toes! With the new tier system that came into effect on 2 December, the team has new challenges including ensuring



While we have the power to issue fines to businesses who aren't complying with guidance, we always aim to engage and educate first. We know it is a tough time for everyone and in some cases, such as really small local businesses, they aren't always aware of all the guidance.

hospitality settings close at 11pm – the new curfew – and that businesses and retail operate within the tiers, adapting in case London's tier changes to the high alert level.

Only with a combined effort and everyone following the rules together will we achieve the reduction in infections needed and, more widely, tackle Covid-19. While the virus continues to present

challenges and impact us all in different ways, one thing is for sure – together Tower Hamlets can get through this.

Thanks to the compliance team for their amazing work, which continues to play a huge role in keeping us all safe.

If you're a resident and want to report anything to the team, they can be contacted by email healthand.safety@towerhamlets.gov.uk

Fight to tackle drugs continues

SAFER TOGETHER

Although the Covid-19 pandemic has continued to impact on some council services, it has not stopped our community safety team continuing its vital work.

Tower Hamlets enforcement officers, together with our CCTV team, have remained vigilant in tackling anti-social behaviour and supporting police to fight against drug-related crime across the borough.

In October, we conducted another of our Operation Continuum raids, the sixth this year.

The most recent raid targeted Whitechapel and Mile End and was the result of reports from residents about drug dealing and drug taking alongside wider intelligence.

In total, there were 21 arrests for drug supply offences from the October raid with a total of 56 drug supply-related charges. Alongside this, large quantities of Class A and B drugs were recovered by the police together with cash over £40,000.

Cllr Asma Begum, Cabinet member for Community Safety, Youth and Equalities, said: "We know that our residents are concerned about crime, especially drug dealing and taking, which is why we work with police partners to disrupt local drug markets. I am pleased to see that our community safety operations have continued throughout Covid, and that Operation Continuum is helping to make Tower Hamlets a safer borough. We will continue to work with the police to target those intent on breaking the law."

If you have any information about drug dealing, call the police on 101 or report it online by visiting www.met.police.uk

If you don't want to report a crime to the police, you can do so anonymously through Crimestoppers on 0800 555 111 or by visiting www.crimestoppers-uk.org



Cash seized from the October raids

**SAFER
TOGETHER**



We're cracking down on drug dealing Operation Continuum

Tower Hamlets Council is working with police partners to crack down on drug dealing and make neighbourhoods cleaner and safer. We've conducted 6 operations this year which have resulted in:

86



total arrests

85



people charged with
over 189 drug supply
charges

£320,950

in cash
seized
under the
Proceeds of
Crime Act



84



high visibility weapon
sweeps conducted in
drug dealing hotspots

61



Community Behaviour
Orders applied for in court to
last 5 years post convictions

10



weapons recovered
including 1 firearm

65



warrants executed



large quantities of Class
A and Class B drugs
(cannabis) seized

1



cannabis café shut down
with drugs, cash and
weapons seized

www.towerhamlets.gov.uk/OperationContinuum

Sign up

Keep up to date with news on community safety by signing up to our new e-newsletter. To sign up, simply visit www.towerhamlets.gov.uk/signup



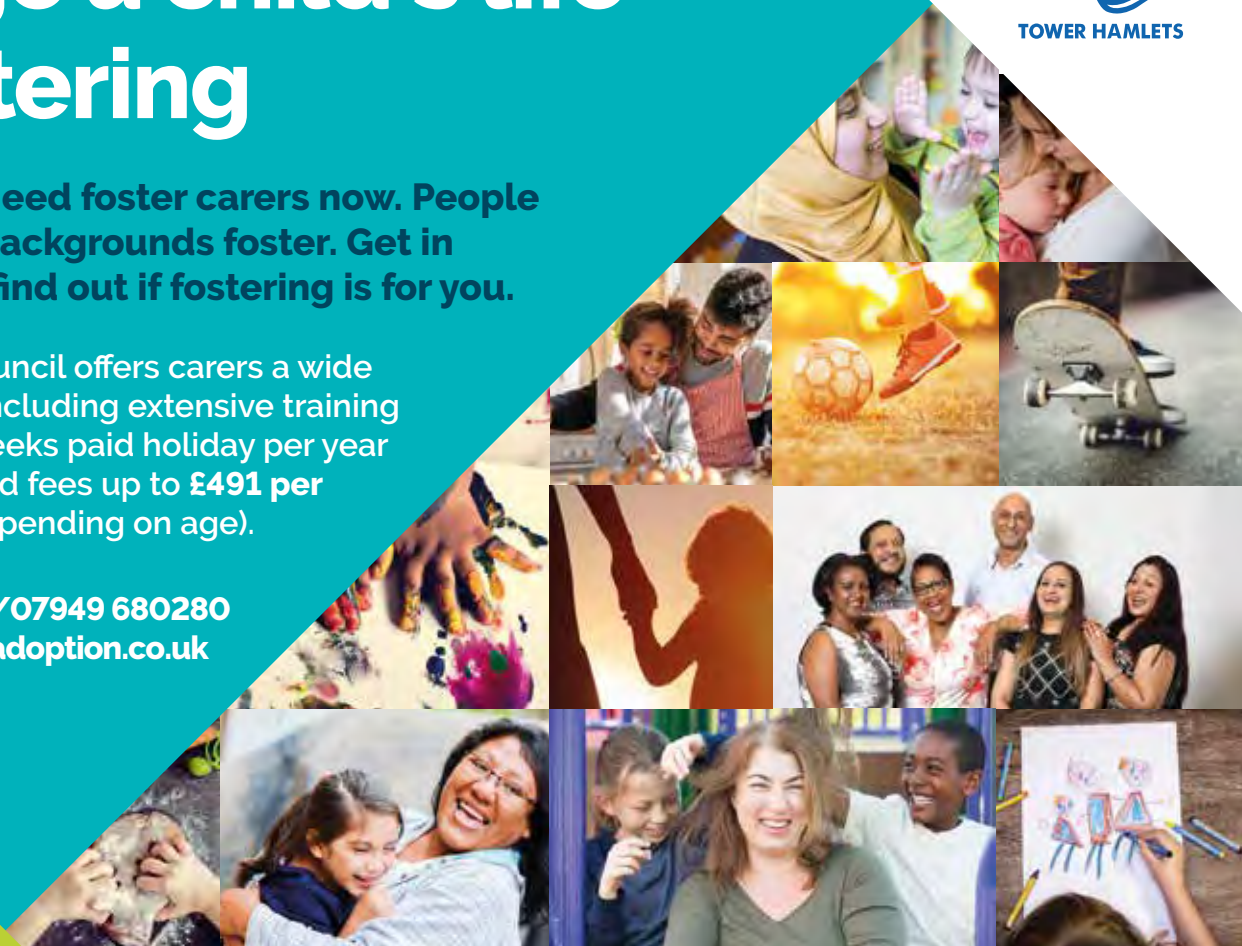
Change a child's life by fostering

Local children need foster carers now. People of all different backgrounds foster. Get in touch now and find out if fostering is for you.

Tower Hamlets Council offers carers a wide range of support including extensive training opportunities, 2 weeks paid holiday per year and allowances and fees up to **£491 per week** (per child depending on age).

Call **07535 684063/07949 680280**
www.fosteringandadoption.co.uk

We can start
the fostering
process virtually to
ensure your safety



Free boiler upgrades for home owners

Tower Hamlets Council has re-launched its award winning Boiler Replacement Programme, a free scheme to replace old and inefficient gas boilers.

If you have a boiler changed through the Programme, you may also be eligible for replacing faulty radiators, old heating controls, draught proofing and insulation.

To qualify you must be in receipt of a qualifying benefit and live in a property you own or with a family member who owns and also lives at the property. The existing boiler will also need to be checked for eligibility.



0800 508 8364
www.towerhamlets.gov.uk/energy

Gardens
&
gardening

Playground
provision
that
promotes
creativity

Rich
Reading
Curriculum
at our
core

Mud
kitchen &
Giant
Roundabout

Nursery & Reception Open Mornings

"Pupils are
engaged,
motivated
and focused."
Ofsted

Are you looking for a small, friendly school where your child can learn and flourish? Come and visit Halley and see what we have to offer.

Wednesday 6th January

Tuesday 12th January

From 4.00pm to 4.30pm

Or alternatively check out our
'Welcome to Nursery & Reception Film'
on the School Website:

www.halley.towerhamlet.sch

Is your child's birth
date between...

September 2016 - August 2017

They are Nursery age now,
but will start Reception in September 2021

(Closing dates for Reception 2021 admissions: 16th January 2021)

September 2017 - August 2018

They can start Nursery
once they turn 3 or in September 2021

(Closing date for Nursery 2021 admissions: 16th February 2021)

To book or arrange a visit,
call 020 7265 8061 or email admin@halley.towerhamlets.sch.uk



Specialist
teachers
for the
arts

Parent
workshops

Welcoming,
friendly
highly
dedicated
team of
staff

Stay
& Play
sessions



Orwell House overlooks Ravenscroft Park

New homes named after ‘The Singing Mayor’

HOUSING

Tower Hamlets’ newest social housing development recently opened in Bethnal Green bearing the name of the borough’s second ever mayor.

A stroll away from Columbia Road Flower Market, the new development welcomed 20 new households to the area as part of the commitment to deliver 2,000 new council homes in Tower Hamlets.

The latest of several in-fill schemes designed to make the most of the borough’s eight square miles of land, the property is named after the late ‘Singing Mayor’, John Orwell, and his wife, one of the last living veterans of the 1936 Battle of Cable Street.

Beattie, now aged 103, grew up in the East End and served as a councillor for a decade from 1972, after working in a trouser factory and bringing up three children.

Overlooking Ravenscroft Park, the bright, new homes feature a roof terrace, balconies and floor-to-ceiling windows with ground-floor apartments adapted to be accessible by wheelchair. Orwell House also features security fob access, smart utility meters, high speed internet connections and a secure bike store.

Alongside some large-scale developments, several smaller in-fill schemes on existing estates will be brought forward in the coming months.

To find out about new council homes being built in the borough, visit talk.towerhamlets.gov.uk/newcouncilhomes



Former Mayor Orwell meets HM Queen Elizabeth II on a visit to the borough in the 1960s



Mayor Biggs with Beattie Orwell on her 100th birthday



Mayor Orwell (right) was a popular figure in Tower Hamlets

Local housing projects win top awards

Two innovative projects providing new homes in the borough were among the big winners at this year’s New London Awards (NLA).

Each year the hotly contested NLA awards celebrate the most innovative architectural improvement projects across the capital.

The Toynbee Hall Estate won for the best mixed-use charity estate regeneration.

This was a collaborative project between the charity Toynbee Hall and developer London Square Spitalfields creating a mixed-use scheme around the Grade II-listed Toynbee Hall, on Commercial Street, E1.

It involved the refurbishment of Toynbee Hall as well as building 63 new homes, a mix of private and affordable housing, creating a landscaped pocket park and new commercial premises.

The charity has been working to tackle poverty in the East End for more than 130 years and the development will help support it in continuing that valuable work.

The Queen’s Yard housing development was named winner of the New London Awards 2020 prize for mixed use development in the planning stage.

Queen’s Yard will be a residential-led mixed-use development in Hackney Wick.

The plans include 143 new homes which will be a mix of private and affordable housing as well as well as flexible, mixed-use workspaces, including affordable workspaces.

It also includes a new theatre and studio space and will be the long-term home for the Yard Theatre.



Queen’s Yard



Toynbee Hall Estate



Studios and offices rise in freight containers at Trinity Buoy Wharf (12)

Building communities

Graham Barker takes a closer look at new developments on this walk around the Lansbury and Aberfeldy Estates, Goodluck Hope and City Island. Photos by **Kois Miah**.

WALK ABERFELDY/LEAMOUTH

How would you design a new village? It's a thought that recurs on this walk, as you explore the Lansbury, Brownfield and Aberfeldy Estates, Goodluck Hope and City Island. Each of these neighbourhoods has developed from the ground up, on land that was either flattened in the Blitz or reclaimed from industrial use. As you explore, you can see how developers and town planners have tackled the challenge of creating new communities.

Starting at All Saints DLR station,

Continued on page 23

| Start:
| All Saints DLR
| station

| Finish:
| Canning Town
| DLR/tube station

| Distance:
| 2.8 Miles

| Allow:
| 90 minutes



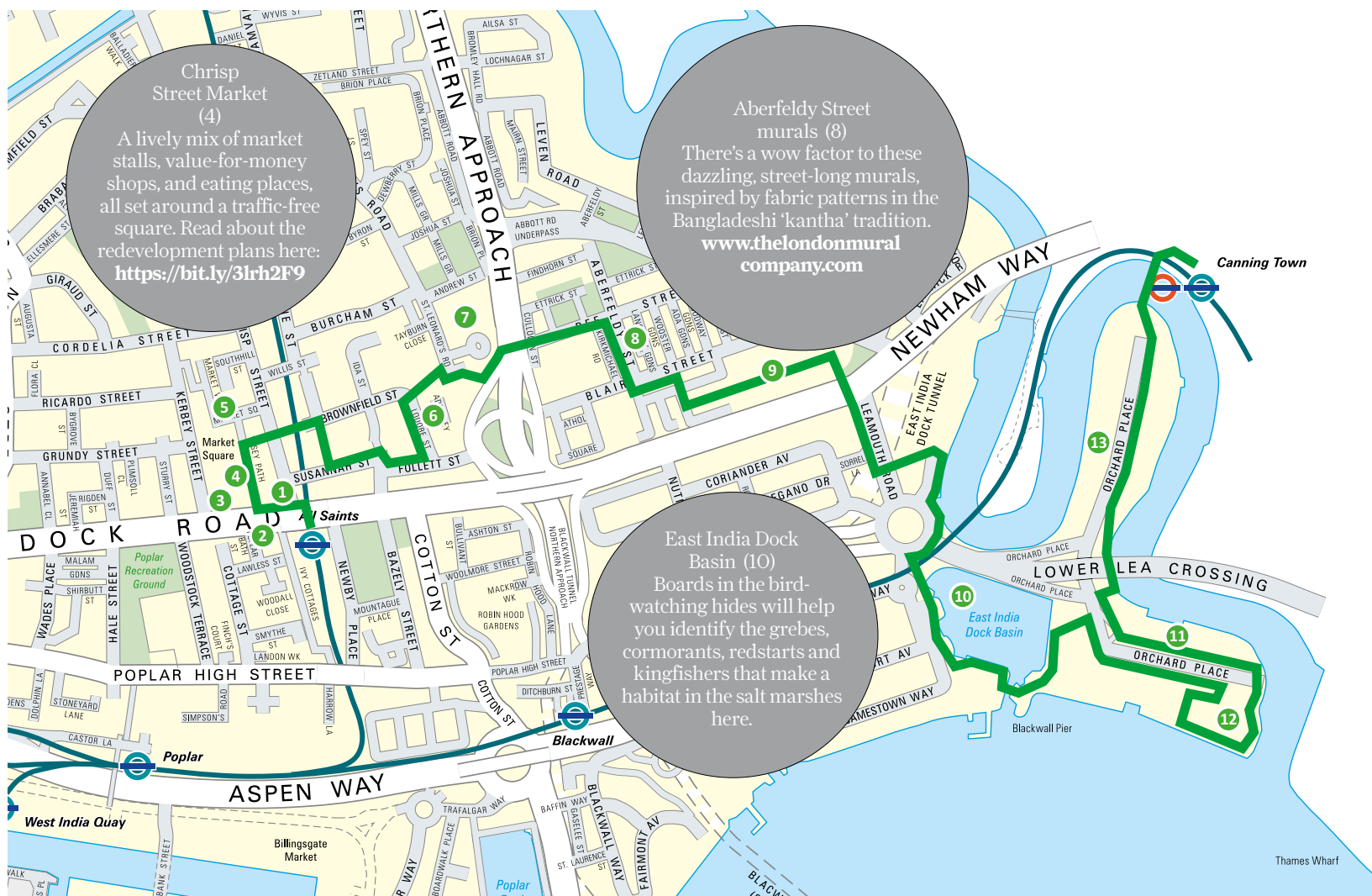
(1) Chihuahua mural on Chrisp Street



(5) Chrisp Street market stalls



(6) Autumn leaves in the Brownfield Estate



peer across the road to a giant Chihuahua (1), some eight storeys high; painted by street artists Irony and Boe in 2014, and adorned with a diamond-studded collar, it looks endearing and slightly manic at the same time.

Cross over East India Dock Road at the lights and look back towards Poplar Baths (2). Opened in 1934, the baths were designed with art deco touches, including ladder windows and a vaulted ceiling. Over the following fifty years or so, many local children learnt to swim here, until it was closed in the 1980s. After a complete refurbishment, it re-opened in 2016, ship-shape and offering not only a pool but also a gym, sports hall, fitness studio and rooftop football pitch.

Across the piazza, outside Eastenders Pie & Mash shop, there's a mural (3) in

purples and pinks. Street artist Agva took a steer from the shop's owner, Brian: "I asked the artist to include George Lansbury, the crane, Canary Wharf and the docks because they're a key part of the market's history and reflect what it's like today." You'll also spot a wheelbarrow that belonged to the local greengrocer for 30 years.

On the corner, Chrisp Street Idea Store (4) is a striking building, designed by David Adjaye with full-height green and blue glazing. Normally busy with book browsers and internet surfers, during lockdown they've been offering a click-and-collect service. Continue between butchers and DIY stores, a credit union and co-working space, and you emerge into Chrisp Street Market (5).

There has been a market here since

Victorian times. But after heavy Blitz damage, Frederick Gibberd was tasked with creating the UK's first purpose-built pedestrian shopping area. It formed a focal point during the 1951 Festival of Britain 'Living Architecture' exhibition; a showcase of post-war approaches to town planning, with the scissor-pattern clock tower serving as a viewing platform.

These days, you'll find market stalls selling pound-a-bag vegetables and homewares, cafés, and further shops along Market Way. Take time to visit the Chrisp Street Management Office, where a model depicts the upcoming redevelopment of the area, which will include new homes, a community hub, and cinema.

Near the clock tower, take the zebra crossing and continue along Brownfield

Street. Balfon Tower stands on the horizon; you'll visit later, but in the meantime nip right, through the first archway – via a garden square – and continue eastward along Susannah and Follett Streets.

At 18 Follett Street, the Jerusalem Coffee House opened in 1900 as an offshoot of St Frideswide's Mission. Instigated by Christ Church College, Oxford in 1881, St Frideswide initially occupied old cottages until a new church, mission house and nunnery opened in 1893. It brings to mind Nonnatus House in the TV series *Call the Midwife*, when nurses and nuns work together in community midwifery.

Cut through the playground and archway to Balfon Tower (7), which – along with neighbouring Carradale



(7) Balfon Tower viewed from afar



(8) Street art depicting engineer, Tommy Flowers



(9) Concrete tea crates in Aberfeldy Village



Sculptures are dotted throughout Trinity Buoy Wharf (12)

and Glenkerry Houses – was designed by Ernő Goldfinger. It's currently being refurbished – not without some controversy – but you can still appreciate the 1960s brutalist architecture soaring dramatically skywards, 27 storeys tall. Walkways connect the maisonettes to the lift tower, which is cast in rugged concrete and slashed with arrow-slit windows.

Head right and follow the footpath behind Balfron Tower. The subway brings you into the Aberfeldy Estate. Farmland until the 1860s, Aberfeldy was first developed by David McIntosh – hence why the street names have a Scottish flavour – and later by chemist, John Abbott.

Aberfeldy Street (8) had a remarkable makeover this year. Inspired by the Bangladeshi 'kantha' tradition of recycling old textiles to make something new, the shops and flats have been painted top-to-toe in vibrant fabric patterns, bringing fresh energy to the high street.

A side mural and community pub commemorate Tommy Flowers, who was born locally in Abbott Road and went on to design Colossus, the world's first programmable computer, with Alan Turing at Bletchley Park.

At the end of the parade turn left and, as the hoarding ends, continue between newly-built blocks. Aberfeldy Village (9), as it's called, will comprise 1,100 new homes when completed. As you follow the linear green, look out for a cluster of concrete tea crates and decorative silver

teardrops inset into the pavement.

As the green ends, turn right and cross East India Dock Road with care, over to blue-strutted Telehouse; a circuit board façade hints at the data centre inside.

Just beyond, cross firstly through the old East India Dock wall, and then a gateway that once led to the East India Company's pepper warehouses. Two snake-entwined rods denote the medicinal properties of spices, and the street names hereabouts – Nutmeg Lane, Clove Crescent, Saffron Avenue – echo a similar theme.

On the far side of Orchard Wharf – currently under construction – you reach the River Lea. From here, there's a fine view of City Island, which you'll visit later. For now, skirt the river to the right, cross at the lights, and – opposite the giant silver acorn on Switch House – continue into East India Dock Basin.

Away from the traffic, you enter another world. East India Dock Basin (10) is now managed as an urban nature reserve, with the salt marsh and reed beds providing habitats for varied birdlife. Opened in 1806, the East India Docks were much larger than what you see today. The export and import docks were filled in to reclaim land for building Brunswick Power Station – later redeveloped as Virginia Quay – and offices, including Mulberry Place.

Cross over the v-shaped lock gate and pause to take in the far-reaching views around Blackwall Reach. The O2 Arena, boats zipping along the Thames, and the Emirates Air Line cable car add extra



Newly-built City Island viewed across the River Lea (13)

interest. Now continue around the basin and through the Salome Gates, sculpted in iron folds by Sir Anthony Caro.

At this point you have a 'there and back' walk to Trinity Buoy Wharf. Orchard Place is currently buzzing with builders, as blocks rise up within the Goodluck Hope development (11). Named after a meandering stretch of the River Lea, this development will provide over 800 new homes, flanked on one side by the Lea and the other by the Thames.

It's an area with an industrial past; info-boards and evocative painted signs refer back to Samuda Brothers shipbuilding yard, the Thames Plate Glass works and other enterprises. Old buoys perch on the pavement, and Bruce Mahalski's fishy mural shows life 'In the Belly of the River Thames'. A giant ship's bow projects out, as if in dry dock, next to the sales showroom.

Trinity Buoy Wharf (12) was once the maintenance depot for Trinity House, the organisation responsible for managing lighthouses and buoys around Britain's coastline. It's a fascinating place to explore; a mix of artists' studios, offices and cafés, interspersed with remarkable artworks, such as a taxi-cab sprouting a metallic tree, perched on top of the Orchard Café. Behind, a red lightship is home to a recording studio.

The old workshops have been supplemented with freight container units to provide flexible workspaces. Weave your way anti-clockwise around the site, past the electrician's shop, chainstore – these days, a parkour zone

– and the proving house.

Out on the riverside, art installations – Time and Tide, Alunatime, and Floodtide – translate the Thames tides into sound and light. And inside the octagonal lighthouse, the Millennium-inspired Long Player is set to chime 'singing bowls' in a random sequence for the next 1,000 years.

After exploring, re-trace your steps along Orchard Place and, beside No 42, you emerge beside the Lea – a sinuous, tidal river – with views back to Goodluck Hope.

Beyond the flyover, multi-coloured apartment blocks rise up on City Island (13). This 12-acre peninsula has been developed with over 1,600 waterside homes. Veer left into Botanic Square, landscaped with angled pathways and flanked by creative co-working studios, a gallery, café-bar and clubhouse.

Ahead, the translucent white building is home to the English National Ballet. Here, with access to seven rehearsal studios and a main performance space, the company of dancers and a symphony orchestra work together to create world-class dance performances.

The plaza outside is paved with a criss-cross design – a motif also featured on the City Island logo – inspired by the lattice pattern on the lighthouse you saw at Trinity Buoy Wharf. From here, a red steel bridge arcs gracefully across Bow Creek, leading you to Canning Town station, the end of your walk.



(11) Goodluck Hope runs along Orchard Place



(12) Taxi-tree sculpture above the Orchard Café



(13) English National Ballet on City Island



Calligraphy and children's dancing are some of the features of the Chinese New Year celebrations

Year of the Ox

Tower Hamlets will be celebrating Chinese New Year, which falls on 12 February. It will be the Year of the Ox. Council Idea Stores and libraries will join the Chinese Association of Tower Hamlets and the Museum of London Docklands to celebrate online, with food demonstrations, calligraphy and performances. Please visit www.towerhamlets.gov.uk/CNY for details.

Holocaust Memorial Day 2021 – Be the light in the darkness

Reflecting on the depth humanity can sink to and the ways people have resisted darkness 'to be the light' before, during and after genocides is the theme of this year's Holocaust Memorial Day (HMD) on 27 January.

To mark HMD, there will be a film programme for schools, self-guided walks taking in historic locations in Tower Hamlets linked to the Jewish community, and Interfaith commemorations organised in partnership with UK Jewish Film, East London Central Synagogue, Jewish Care and Jewish East End Celebration Society.

The theme in 2021 is 'Be the light in the darkness' which asks us to consider different kinds of 'darkness' – for example, identity-based persecution, misinformation, denial of justice; and different ways of 'being the light' – for example, resistance, acts of solidarity, rescue and illuminating mistruths.



Reflect on the ways communities 'resisted darkness'

We can all stand in solidarity. We can choose to be the light in the darkness in a variety of ways and places – at home, in public, and online.

For further information and to access events, please go to www.towerhamlets.gov.uk/HMD.

Canary Wharf's 'open air gallery'

Canary Wharf continues to expand its collection of public art, introducing six new pieces to the estate's collection – creating an 'open air gallery' for people to enjoy.



Enjoy colourful light artwork and other displays on the Canary Wharf Estate this winter

Canary Wharf has one of the UK's largest collections of public art that is free to enjoy in the green spaces of the estate.

Among the newest additions is Scribbleform by Birmingham-born artist Julian Wild, now one of the largest sculptures on the estate, at an impressive 10 metres, in a stunning red and weighing three tonnes.

Also displayed is The Clew by Ottotto, a minimal and elegant structure formed of 100 circles of red light.

Other new artworks include Metamorphosis, by Helaine Blumenfeld OBE, which was exclusively commissioned by Canary Wharf Group to be placed in the new residential district, Wood Wharf. The four-metre bronze sculpture joins previously commissioned piece Fortuna (2016) also by Helaine Blumenfeld, located in Jubilee Park.

Meanwhile, contemporary street artist and East London resident Camille Walala's bold transformation of Adams Plaza Bridge has been absorbed into the permanent art collection after its debut at the inaugural London Mural Festival.

Visit www.canarywharf.com for further information.



Scan a QR code on Grand Union's musical walking tour

Grand musical walk

Music organisation The Grand Union Orchestra, based in Spitalfields, has added another string to its bow by launching a trailblazing musical walk titled From Cable Street to Bethnal Green.

Participants are invited to scan QR codes and an interactive map and discover some of the exciting culture, heritage and historic landmarks in the borough.

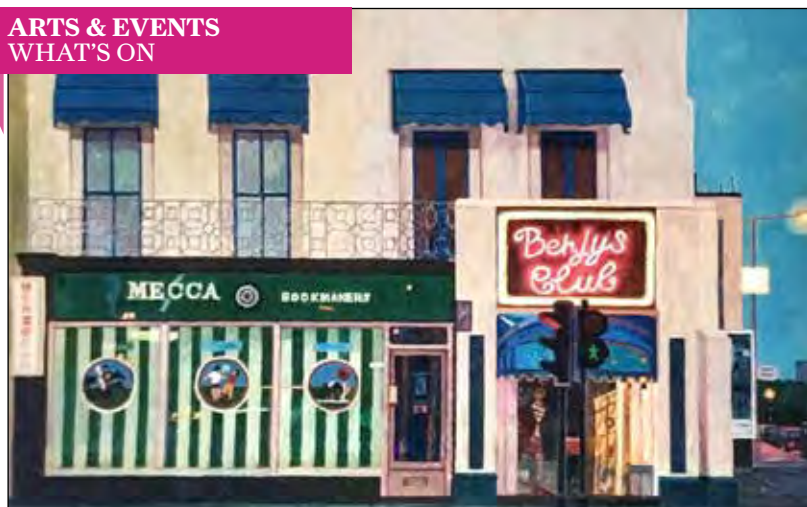
The 5km walk goes from St George in the East to St John on Bethnal Green, via the Cable Street Mural, Wilton's Music Hall, Altab Ali Park, Brick Lane, Weavers Fields and Oxford House.

At each location, walkers will discover a QR code to be scanned with a mobile phone, which will link to a YouTube video of Grand Union's performance of a pertinent piece of music.

The videos relate extraordinary stories and political or historical events including tales of exile and liberation, of protest and sometimes violence. Music and songs by Tony Haynes have been specially selected from Grand Union Orchestra shows spanning over 30 years, with local people of all ages among the performers, and many filmed in the venues and locations on the trail.

The map also contains descriptions revealing the story behind each landmark, its significance, and its relation to the musical material.

For further information visit grandunion.org.uk.



Drawings by Doreen Fletcher – Benjy's Mile End 1992 and Hot Dogs, Mile End Park 1993

Exhibitions

Drawings and Prints by Doreen Fletcher 1974-2020

Doreen Fletcher is an artist who documents change, be it the use of buildings, faded shop signs, dilapidated street furniture or graffiti. This exhibition focuses primarily on the period 1985-2004, a time of tremendous transition in the East End, but it also includes more recent work recording the changing face of the Royal London Hospital. These are tender depictions of familiar sights and evoke the ambience of the built environment through the type of premise as much as the specific location.

Until Sunday 31 January 2021

Brady Arts and Community Centre,
192-196 Hanbury Street, Whitechapel
E1 5HU.

Visit www.towerhamlets.gov.uk/arts



Neon Tree at Connected by Light

Connected by Light

A vibrant collection of inspiring light artworks igniting the sky against the Canary Wharf skyline. Showcasing the intricate work of UK artists, it provides the perfect opportunity for an evening of escapism. The exhibit is complemented by the existing eight light art pieces which form part of Canary Wharf's public art collection (over 75 pieces by 50 world-renowned artists are situated on the estate, free to visitors all year round). Visit after

dusk to see the installation at its mesmerising best.

**Until Sunday 31 January 2021, dusk
– 10pm daily**

More information:

www.canarywharf.com

Activities for children and families



Old Flo by Henry Moore

Old Flo quiz and art book

To help youngsters to get to know Henry Moore's Draped Seated Woman sculpture, known affectionately as 'Old Flo', which has been sited in Canary Wharf for over three years, Canary Wharf Group has produced a new children's quiz. The quiz encourages children to explore art, the history of Old Flo and the process of creating a sculpture. Download the quiz and the accompanying artbook or complete an online form to have a copy posted to your home address.

Ongoing

Visit www.canarywharf.com/whats-on/childrens-old-flo-quiz-artbook

Idea Store events online

Idea Store activities and events for children have moved online. Free fun for youngsters between the ages of five to 11 years includes a creative



Special guest at Idea Store online activities

club, discussions about books, story time, chat about football and more. We have also heard on the Christmas grapevine that a special guest from the North Pole may be joining some of the activities to say hello. Children must be accompanied by an adult at the start of the event.

Every week up to 19 December and then from 4 January 2021.

Visit www.ideastore.co.uk/children-families for contact details for each activity. The team will get back to you with a Zoom code and details of how to join.



Christmas story Saving of Santa

Saving of Santa

Oh no! There's something wrong with Santa. It's up to chief elf 'n' safety officer Nordstrom, Aurora, the cleverest fairy and YOU to save Christmas. Can you help overturn the dastardly deeds of revolting elves, Marmadron and Squelch, before it's too late? This delightful, original Christmas story was first staged at The Space in 2009. Updated and

adapted as an interactive online Christmas adventure to mark their 25th year, The Space is thrilled to revive this tale by Lobelia Golightly.

20 - 23 December

Online performances including BSL at space.org.uk/event/the-saving-of-santa

Tea dance at home

Join us for our online festive tea dance and celebrate Christmas at home. Residents of all ages can enjoy an afternoon of entertainment. Grab a cup of tea and a mince pie or two and enjoy music and dancing from the comfort of your home. The Sunshine Kings jazz and swing band will play a selection of old favourites. Popular dance leader Tony Lane will demonstrate some steps for a range of dancing styles. Dress up for the occasion and quick step into the spirit of the season.

From 2 - 4pm on 17 December or any time over the festive period.

Tune in to view on our You Tube channel at www.youtube.com/user/towerhamletscouncil/videos

Festival

Bangladesh 50

Next year marks 50 years since the independence of Bangladesh. To mark this, Tower Hamlets Local History Library & Archives and the National Portrait Gallery are leading Bangladesh 50 Years, one of four projects that forms part of the National Portrait Gallery's offsite programme, Citizen UK, during its temporary closure to transform the gallery. Citizen UK is an exciting research and creative engagement project involving the borough archive services, local communities and contemporary artists. It is funded by the National Lottery Heritage Fund. The project will conclude with a Bangladesh 50 Festival, marking Bangladesh Independence Day on 26 March and the related anniversary UN International Mother Language Day on 21 February
21 February - 26 March 2021.
Visit www.ideastore.co.uk/bangladesh-50-years



Counting staff at work

Make a date for important polls coming up on 6 May 2021

COUNCIL NEWS

The Mayor of London and Greater London Authority (GLA) elections that were due to take place in May 2020 had to be postponed due to the Covid-19 pandemic. They have now been rescheduled to take place on Thursday 6 May 2021, and in Tower Hamlets they will also run alongside two referendums arranged for the same day.

In November, councillors voted in favour of a borough-wide referendum on how the borough is governed in the future. This is in addition to a smaller neighbourhood planning referendum taking place on the Isle of Dogs.

Tower Hamlets has operated a Mayor and Cabinet 'model of governance' since May 2010. The current model was

established through a referendum, so it can only be changed through another referendum, and any new poll can only take place at least 10 years after the date of the first one.

Councillors agreed that the governance model to be considered as an alternative to the current Mayor and Cabinet system will be the Leader and Cabinet model.

Councillors were asked to consider a number of factors relating to the timing of a referendum including how ongoing uncertainty around how Covid-19 could impact the May 2021 elections. They also agreed that running the referendum alongside the rescheduled Mayor of London and GLA elections would help to boost voter turnout and reduce some of the council's costs for running the referendum.

Will Tuckley, the council's Chief

List of voters updated

The Council's Electoral Registration Officer, Will Tuckley, has overseen the publication of the revised Register of Electors on 1 December 2020 following new canvass reform legislation. Canvass Reform has made the process simpler for citizens, allows for a more tailored local approach with better use of resources. It is also more accurate, and maintains the security and integrity of the register including data-matching with government and local records to remove the need for many households to send back forms if the information held about them was already correct.

Don't worry if you have just moved to Tower Hamlets, or believe that you have missed the recent annual canvass process, you can still register to vote in about 5 minutes on the government website: www.gov.uk/register-to-vote.

Executive, is the senior official overseeing local referendums. As the 'Counting Officer' he also had to give his agreement to the date, again considering the issues around public engagement, participation and cost.

Depending on the outcome of the governance model referendum, the chosen system will be in place for the local government elections involving Tower Hamlets Council in May 2022.

Census days is coming so let's make it count

Sunday 21 March 2021 is Census Day and households across Tower Hamlets will be asked to take part in the nationwide survey of housing and the population. It has been carried out every decade since 1801, with the exception of 1941 during the second world war.

Information from the census will help decide how local services in Tower Hamlets are planned and funded in the future – this could include anything, from doctors' surgeries, new housing

developments or transport links. With one of the fastest growing populations in the country, it's important that the borough has an accurate picture of the pressures we face, to help meet the complex needs of our communities.

Households will receive a letter with a unique access code in the post, allowing them to complete their questionnaire online, although paper questionnaires will also be available for those who need them.

The census will include questions about your sex, age, work, health, education, household size and ethnicity.

Results will be available within 12 months, although personal records will be locked away for 100 years, kept safe for future generations. Find out more on the census website www.census.gov.uk - which also includes details on the 30,000 flexible census job opportunities available.

census
2021



The ever popular 'story time' went online during the pandemic

Digital revolution sparked by lockdowns

COUNCIL NEWS

Despite the restrictions of two lockdowns, the Idea Store and libraries team have continued to support people by putting services online.

In fact, the changes have been so successful that 2,000 new members have joined since March and 8,000 people have signed up for adult learning courses.

The service has increased its range of eMagazines, eJournals and eBooks, and has provided self service machines to borrow and return books along with providing a click-and-collect service. Those without digital access can still book out computers for study or to access council services.

The move online has benefitted residents of all ages. Popular clubs including Prime Time (where residents aged 60 plus meet to socialise), Conversation Club (where people whose first language isn't English have the chance to practice with others) and Book Group, were all held via online platform Zoom this year.

Support children and families through the pandemic has been a key focus.

Library staff have recorded themselves reading children's books and singing nursery rhymes to keep toddlers entertained through the Idea Store YouTube channel, and there has been a host of other online activities including art workshops.

Creative youngsters were not left in the lurch as art workshops and children's

activities continued online.

From 3 December, four Idea Stores opened their doors to the public (Bow, Chrisp Street, Whitechapel and Canary Wharf) on Monday-Friday from 10am-6pm and at weekends from 12noon-

4pm.

Tower Hamlets Local History Library and Archives will stay open until 18 December on Tuesdays and Fridays for pre-booked visitors only. To book a visit go to www.ideastore.co.uk/local-history

Library facts

- There are five Idea Stores (Bow, Whitechapel, Canary Wharf, Chrisp Street and Watney Market), two libraries (Bethnal Green and Cubitt Town) and a local history library and archives (Mile End)
- Since 2002 when Idea Stores opened, visitor numbers have increased from 550,000 to almost 2 million
- There are more than 800 adult learning courses – everything from ESOL, to business training and even ballet
- Over 2,000 new members since March 2020

Asthma campaign wins award

Tower Hamlets Together, a partnership of health and social care organisations in Tower Hamlets, triumphed at October's Local Government Chronicle (LGC) awards winning the public health category for its ground-breaking asthma and wheeze pilot project 'Take a Breather: Stopping the Monster Days'.

Involving nearly 300 partners from across the borough, the project was co-created with local children who inspired the title, saying: "We just want to breathe." It has since been adopted nationally and presented to audiences across the country.

It found over 500 children in Tower Hamlets, who were at high-risk of asthma attacks, with many of these thinking it was normal to be wheezy, miss exercising at school or sleep badly because of their asthma – which, when treated properly, should have no

symptoms at all.

As a result, there has been a 22 per cent reduction in unplanned hospital admissions due to asthma, an increase in asthma care plans from 40 per cent to 75 per cent and improved control of asthma in 92 per cent of high-risk children who were seen in the pilot intervention.

Winners of LGC awards are selected by a panel of council chief executives from across the UK and judged on their innovation and reaction to residents' needs.

Children with asthma should review their asthma plan at least once a year and keep a copy of their asthma/wheeze plan at home and at school. Any child who needs to use their blue inhaler more than three times in a week, four times in an hour, or coughs at night-time should see their GP.



Co-created artwork, in green, of a monster as drawn by a five-year-old boy from Tower Hamlets.

Victoria Park again voted among the best in the UK

Victoria Park has again lived up to its nickname as 'The People's Park' after picking up two more awards including being named in the top 10 parks in the country for the 7th year running.

The Green Flag Award scheme is the international quality standard that recognises and rewards well-managed parks and green spaces, setting the benchmark standard for their management across the United Kingdom and around the world.

In October, Victoria Park and 11 other parks and open spaces in the borough retained their prestigious Green Flag Awards. In the following month, the public was invited to vote for their favourite park and more than 59,000 did just that.

For the seventh consecutive year, Victoria Park was amongst the People's Choice 10 most popular parks and green spaces.

Cllr Sabina Akhtar, Cabinet member for Culture, Arts and Brexit, said: "Thanks to our amazing staff and



Winter scene at the multi-award winning Victoria Park

volunteers, Victoria Park is a great place for recreation, sports, play and relaxation. During the pandemic, the jewel in the borough's crown, has proven to be even more valuable for its green and open space. I'd like to thank everyone who voted for Victoria Park and I am delighted that in 2020 it has been recognised in the Green Flag People's Choice Awards, for the seventh year running.

Elsewhere, organisations and community gardeners across the borough have been recognised for their amazing sense of community spirit which has enabled people to enjoy green spaces and face the difficulties of the pandemic together.

The Royal Horticultural Society (RHS) and London in Bloom awarded certificates of recognition to the council and council-run Victoria Park and Trinity Square Gardens as well as Tower



Mile End Park among 11 parks to retain its Green Flag status

Hamlets Cemetery Park and Canary Wharf.

Writing to organisations, Kay Clark, RHS Community Development Manager said: "We know that people have felt closer to nature through lockdown and valued access to green space so much

more, and we have heard that people are valuing your work more than ever before.

We want to recognise how important you all are and how valuable your work is with certificates in 2020."

Green Flag Award winning parks in Tower Hamlets are:

- Altab Ali Park
- Island Gardens
- Meath Gardens
- Mile End Park
- Millwall Park
- Poplar Recreation Ground
- Sir John McDougall Gardens
- St Georges Gardens
- Stepney Green Park
- Trinity Square Gardens
- Victoria Park
- Weavers Fields

Make volunteering your New Year's resolution

Covid-19 changed many things, but volunteering remains a very rewarding activity you can do in your spare time. Many local residents still rely on the generosity of local volunteers to help them live a better life, for a bit of company and to carry out essential tasks. Covid-19 increased resident need and brought us together as a community. Whether you want to help more in the new year, or just try out something new, volunteering is the perfect New Year's Resolution.

Volunteer Centre Tower Hamlets is funded by Tower Hamlets Council to run the Coronavirus Covid-19 Tower Hamlets

Volunteering Hub. If you sign up for the hub you could help local charities in many ways, such as befriending local residents over the telephone to keep them company, delivering food or medication to vulnerable people using your own car or bike, or cooking food. There are many options, and not all are Covid-related; volunteer for just one day, for a couple hours a week or more regularly. You can use your existing skills or develop new skills in administration, social care and customer service.

It has never been easier to volunteer. Visit www.vcth.org.uk or text 07595 219603 and start volunteering today.



Housing fraud couple face 'Wapping' £80,000 bill

A couple who were forced to return a three-bedroom social housing property in Wapping after being convicted of housing fraud, now face a huge bill of £80,000 including £50,000 in compensation to the council.

Mr Joinul and Mrs Shahida Hoque were originally found guilty in

September last year of obtaining a property in Frobisher House, Wapping, by deception as they failed to declare that they already owned a five-bedroom detached bungalow with a swimming pool in Rainham, Essex.

They were caught out by the council's housing fraud team and both received a

sentence of 9 months, suspended for 18 months, 80 hours Community Service and were electronically tagged with overnight curfews.

Following the conviction, the council obtained a court order to prevent the couple from selling their assets and carried out a detailed investigation to

gain compensation under the Proceeds of Crime Act 2002. Mr and Mrs Hoque agreed to pay a total of £80,000.

If you have information that a council or social housing property is involved in housing fraud, email socialhousingfraud@towerhamlets.gov.uk

Tackling digital exclusion among young people

COMMUNITY NEWS

A social enterprise in Tower Hamlets has launched a crowd-funding initiative to reuse devices to help tackle social exclusion and reduce e-waste.

It is estimated that there are some 11 million unused devices in the UK alone. TechInclusionUK is working with Tower Hamlets Education Partnership to refurbish up to 500 donated devices, such as laptops or PCs, and give them to digitally excluded children. Every device donated is wiped of data so there are no security issues.

TechInclusionUK is initially focusing on young people who are ineligible for

government support and who need to be able to access learning at home to reach their full potential.

Rich Clensy, a co-founder of TechInclusion UK, said: "By taking unused devices, we can give them a new lease of life to help empower a young person who finds themselves digitally excluded."

"Each unused device that you have under your bed or in a cupboard can be reused or recycled. We're able to divert e-waste from being prematurely recycled, ending up in landfill or simply just not being used."

To donate unwanted equipment, go to techinclusion.org.uk/ or to pledge a cash donation, visit www.spacehive.com/tech-for-tower-hamlets



TechInclusionUK co-founder Collette Nabyonga handing over iPads to Robyn Bruce, headteacher at Cubitt Town Infants' School

“By taking unused devices, we can give them a new lease of life to help empower a young person who finds themselves digitally excluded.”

Running for mental health



Shah (front) and the Victoria Park running group, before the lockdown

A running group is helping people keep fit and look after their mental health during the pandemic.

Run4Rene was founded in 2017 by Stefanie Stavri in memory of her brother Rene who took his own life at the age of 22.

It meets outside the Pavillion Cafe every Saturday morning and runners

have continued to connect with each other virtually during the pandemic.

Stef's friend Shah Alam, who leads the run in Victoria Park, said: "We are more than just a running crew, we're a community dedicated to having conversations around mental health and fighting the stigma that isolates people and steals lives."

“We know that joining any group for the first time can be daunting, but Run4Rene is a free, safe and welcoming space where you can come to listen or be heard.”

"We know that joining any group for the first time can be daunting, but Run4Rene is a free, safe and welcoming space where you can come to listen or be heard. We walk, jog or run one lap of the park and usually have breakfast at the café afterwards."

Visit www.run4rene.com for further information.



Your gift can provide happiness for children in this difficult year

Toy Appeal sets up shop

This Christmas, you can share a thought, and a gift, for a child in your local community with the East London Business Association Toy Appeal.

Running until Friday 18 December, the Toy Appeal pop-up at Canary Wharf offers the public a chance to donate a bought toy to a child who may not be able to receive one this Christmas.

An incredible team of volunteers will then sort and deliver the gifts to children in east London and beyond who may have thought receiving a Christmas gift this year was just not a reality.

Visit www.canarywharf.com/whats-on/east-london-christmas-toy-appeal-dec-2020 for details of how and what to donate.

Former England footballer makes virtual visit

Alex Scott MBE made a virtual visit to Newark Youth London in Whitechapel to learn how Children in Need funding is making a positive difference.

The project was awarded a three-year grant of £99,927 to provide a range of activities including arts and games, sports, healthy cooking and life-skills sessions. It also helps young people to build their confidence and friendships.

During her online visit, Alex took part in a skills and exercise session and

took time to speak to the young people to learn more about how the project supports them and what they get out of it. They were also excited to ask Alex about her time at Arsenal FC, England and representing Great Britain at the 2012 London Olympics.

Alex said: "It felt so good to be a part of the skills session and get involved with the activities. It was great to see everyone smiling online and I'm still smiling now."



It felt so good to be a part of the skills session and get involved with the activities. It was great to see everyone smiling online and I'm still smiling now.



Alex Scott in action © Shutterstock

Tower Hamlets first healthy, affordable food store is open to support families in need

A community-led scheme to provide healthy food and other support to those in need opened its doors in Limehouse last month.

The Food Store in Limborough House helps eligible families to shop for their groceries at a fraction of the usual price. Residents pay a small weekly membership fee of £3.50 giving them access to a significant value of surplus food.

Ongoing membership is conditional on continued engagement with support services such as debt and welfare benefits advice agencies.

Offering longer-term support than food banks and a greater choice of produce, the aim is to increase household stability by offering low-cost food alongside sustainable solutions to improve participants' finances, wellbeing and debt management.

Members are referred based on need by partner agencies and housing associations. Food Store advisors will refer them to support services to address their underlying needs and maximise income.

Food insecurity is affecting a growing number of residents in the borough, especially lone parents and the unemployed. Healthy food can be unaffordable for low-income residents often due to pockets of "food deserts" in the area, meaning a lack of shops that sell healthy affordable food within a reachable distance.

Burdett Football Club (BFC) is delivering the scheme supported by housing association Poplar HARCA and funded by Tower Hamlets Council.

John Biggs, Mayor of Tower Hamlets, said: "We're delighted to see the community come together to ensure more residents can afford to eat a balanced diet.



Mayor John Biggs cutting the ribbon to mark the opening of the Food Store

"We continue to support families with an extended free school meals offer and our Tackling Poverty programme offers financial support and benefits advice to vulnerable residents."

Babu Bhattacharjee, Director of Communities and Neighbourhoods at Poplar HARCA, said:

"This is an important scheme and we are pleased to be able to provide support and free space for the local community through this partnership. The end goal is strengthened communities with improved family finances and wellbeing."

For more information about the Food Store contact: Masoom Ahmed, CEO, The Food Store, 07930 983 651 or email thefoodstoreburdett@outlook.com

Referring Agencies

- London Borough Tower Hamlets / local advice agencies
- Tower Hamlets Community Advice Network
- Jobcentre Plus
- Refuges
- Health centres
- Faith institutions
- Registered social landlords



Supplies at the Food Store



A sample of updates posted by our community on social media using #TowerHamletsTogether

Getting through 2020 together

COMMUNITY NEWS

No matter which way you cut it, 2020 has been a tough year.

But the community of Tower Hamlets has shown that at times of challenge, the very best of the human spirit comes to the fore.

Thanks to you, 2020 has also been a year of togetherness, kindness and resilience.

Over the past nine months, we've seen countless people come forward to help others. From delivering food and care packages, making face coverings and supporting those who have been isolated to donating meals, books and laptops and finding creative ways to help small businesses stay afloat.

We've seen key workers keep essential services running, and we've seen others stay home to protect each other. Parents have become teachers, partners have become colleagues, homes have become

offices, and parks and public spaces have been valued more than ever. The NHS and our health and care workers have become – or cemented their place as – our national heroes.

The local response to the Covid-19 pandemic continues to impress and inspire us.

Thank you to all of you from across our diverse communities for playing your part – together you've shown that we're stronger than we were before.

Thank you to our partner organisations, community groups, local businesses, transport, emergency services and council staff. To our teachers, health and care workers, and everyone at the NHS – the list goes on.

To those who have experienced loss, please know you are not alone in your grief and your community stands by you at this difficult time. This year has touched us all in ways we didn't see coming. You and your loved ones are not forgotten.

As we head into the festive season and a new year, we cannot forget the challenges we have faced but we can reflect on the courage and collaboration our communities have shown. We can look forward to a better year ahead, taking with us the East End spirit this crisis has strengthened.

Mayor John Biggs said: "While these are tough times, the East End is even tougher. Our communities are showing great resilience, courage and camaraderie and I want to thank everyone for helping us get through this together."

Here, we recap on some of the many moments and gestures that have brought smiles to our residents' faces throughout 2020.

Thank you for sharing what you're doing to help or saying thanks on social media using #TowerHamletsTogether.

“

While these are tough times, the East End is even tougher. Our communities are showing great resilience. I want to thank everyone for helping us get through this together.



Let's Talk Tower Hamlets

Have your say at talk.towerhamlets.gov.uk/projects

COUNCIL NEWS

We value and appreciate feedback from our residents. Your thoughts help shape our proposals, projects and priorities to improve our borough. We're consulting on a range of initiatives at the moment:

Proposal for the closure of Shapla Primary School – statutory notice: Respond by 16 December 2020

In partnership with the governing body of Shapla, we have reluctantly determined that the school should close due to a substantial decline in pupil numbers over an extended period and the associated impact on its educational and financial viability.

Proposal to amalgamate Cubitt Town Infants and Cubitt Town Junior – statutory notice: Respond by 16 December 2020

We are proposing to combine the two schools as follows: Cubitt Town Infants School will close from 31 March 2022; Cubitt Town Junior School will alter its age range and convert to a three form entry all through primary school (90 places in each year group) from 1 April 2022; and all children attending Cubitt Town Infants School will transfer to the new Cubitt Town Primary School from 1 April 2022.

Liveable Streets – Old Ford Road West proposals: Survey closes 20 December 2020

Liveable Streets aims to improve the look and feel of public spaces in neighbourhoods across the borough and make it easier, safer, and more convenient to get around by foot, bike and public transport. We would like your views on the proposals for the Old Ford Road West project area.

Tall buildings project: Share your ideas now or join a workshop in early 2021

We are developing a new supplementary planning document to guide and influence the design and planning of tall buildings across the borough. We want to hear any ideas or thoughts you have on the development of tall buildings.

Proposal for the closure of St Matthias – statutory notice: Respond by 7 January 2021

In partnership with the governing body of St Matthias Church of England Primary School, we have reluctantly determined the school should close due to a substantial decline in pupil numbers over an extended period and the associated impact on its educational and financial viability.

Proposal for the closure of The Cherry Trees School – statutory notice: Respond by 7 January 2021

The Cherry Trees Special School has previously been a valued asset to the borough's provision for children with special educational needs and disabilities. However, it has become evident that the specialist provision offered by Cherry Trees is no longer effective or fit for purpose.

Birth to 19-years offer: Survey closes 11 January 2021

We are consulting on our new birth to 19-years offer (up to 25 for young people with special educational needs and disabilities). Our aim is to provide services that support families to build resilience by providing advice, support and, where needed, early intervention.

Tower Hamlets Black, Asian and Minority Ethnic Inequalities Commission: Share your views on four key focus areas by 15 January 2021

Commissioners want to hear your ideas and lived experiences on community leadership; health inequalities;



Help shape the future of Tower Hamlets' library service – have your say by 29 January 2021

education; and employment. This will help the commission deliver tangible actions to bring real change to the lives of our Black, Asian and minority ethnic communities. Surveys will be open until 5pm on Friday 15 January 2021. Read more on page 42.

The future of Tower Hamlets' library service: Survey closes 29 January 2021

Due to changes in funding and the Covid-19 crisis, we have to save an extra £30 million by 2024. To do this, savings have to be made including reducing the cost of our library service. The changes we are proposing will deliver savings of £1.6 million. If you require support with the online survey, call 020 7364 0237. You can also book to access a computer or WiFi at Idea Stores Bow, Chrisp Street or Whitechapel.

Proposed ward name changes: Survey closes 2 February 2021

We are carrying out a consultation to consider proposed name changes to three wards in the borough. Suggestions have been put forward to change: Bethnal Green ward to Bethnal Green East ward;

St. Peter's ward to Bethnal Green West ward; and Canary Wharf ward to Millwall ward.

Changes to day support in adult social care: Survey closes 4 January 2021

We are consulting on proposals that will change day support services in adult social care. Day support includes activities, services and day centres for adults who need care and support. If you would like help responding to the consultation in a different way, you can call us on 020 7364 2930 or email spp@towerhamlets.gov.uk. You can also contact Real on 020 7001 2175 or email on local-link@real.org.uk

Cressy Place development: Survey closes 24 January 2021

We are consulting on plans to build 44 homes and community facilities ahead of a planning application next year. The new homes being developed on the site will be well designed, built to modern space standards, be energy efficient and make a positive contribution to the local environment.

You said, we did: Bow Liveable Streets

Traffic calming measures will be introduced in Bow next year as part of our Liveable Streets programme.

In response to our consultation, 70 per cent of respondents in Bow backed plans for timed restrictions for motor vehicles around Roman Road Market, schools and residential roads to reduce the 16,000 vehicles cutting through the area each day without stopping.

More than 3,800 people responded to the proposals which were shaped by 18 months of community engagement and are aimed at improving road safety and air quality.

John Biggs, Mayor of Tower Hamlets, said: "We're delighted to see so much

support for the investment in cleaner, greener streets for residents in Bow."

Measures to be implemented in 2021 include:

- A bus gate during weekday mornings and evenings at the junction with St Stephen's Road and Roman Road.
- Roman Road Market (between St Stephen's Road and Parnell Road) will be closed to motor vehicles from 10am to 4.30pm, seven days a week instead of only on market days (Tuesdays, Thursdays and Saturdays).
- Skew Bridge on Old Ford Road will no longer be accessible by motor vehicles with additional residential parking and short-stay bays for visitors.

- To reduce rat-running traffic, there will be timed restrictions for motor vehicles on Coborn Road on weekdays.
- Continuous pavements along Fairfield Road and St Stephen's Road aimed at increasing road safety by slowing traffic at junctions.
- A new T-junction to replace the mini-roundabout on the junction of Tredegar Road and Fairfield Road.
- The Mayor and Cabinet agreed to explore an exemption scheme for vehicles designated by blue badge holders.

Read more about the consultation results and view the designs at talk.towerhamlets.gov.uk/lbow



What Skew Bridge might look like under the proposals



New A12 noise barrier © Edmund Sumner

A12 noise barrier a UK first

A new barrier intended to dramatically reduce the impact of traffic noise on passers-by has been fitted on the A12, next to Bromley-by-Bow station.

The project, led by housing association Poplar HARCA, and funded by the London Borough of Tower Hamlets and Transport for London (TfL), aims to enhance the area for people walking and cycling in the area.

Noise levels on the busy road, which sees more than 15 million vehicles moving along it every year, have been found to consistently exceed 78 decibels by the University of East London (UEL). This puts the A12 in the most severe category for noise pollution, according to the World Health Organisation and the Department for the Environment.

John Biggs, Mayor of Tower Hamlets, said: "This innovative barrier should serve as a comfort to residents passing through the area who suffer from excessive noise emanating from the A12. We have listened to

residents who have complained about the level of noise pollution and if the scheme is successful it could be rolled out elsewhere in Tower Hamlets."

Local people surveyed and who took part in focus groups scored road noise as a 'highly irritable source of noise' in Bromley-by-Bow.

Fran Jefcoate, a local resident who took part in the consultation, said of the stretch of road: "You can't have a conversation with the person next to you, let alone make a phone call because the traffic noise makes it impossible to hear. I hope the barrier makes it better for anyone who uses this stretch of pavement."

The 'Silk Metal' noise resistant material from which the barrier is made makes it the first of its kind in the UK. The installation's unique design intends for it to also function as a public artwork. Led by architects Beep Studio, the design and construction team is a collaboration between Expedition Engineering, Cake Studio, Echo Barrier and Power and Line.

Free winter meals for children

The council will be providing meals for children in need across the borough over the Christmas break and February half-term – with any child who is eligible for statutory free school meals during term-time receiving support. £25 vouchers to cover the Christmas period will be distributed through schools, with details of the February scheme

announced nearer the time.

The council is working closely with its schools, who will again be going above and beyond their usual work, to help to distribute the vouchers to families, in another example of their role in providing community leadership as they have done throughout the pandemic.



Help us to save £30 million in latest budget

Thank you to everyone who gave their views as part of our budget consultation, which closed on 9 December. This year the council is spending £1.2 billion gross expenditure (£354.5 million net expenditure budget) on public services to support people and improve lives. Over half of our net budget is spent on supporting children and vulnerable adults.

Covid-19 has had a huge and ongoing impact on our services and our finances, and we are setting our budget

in that context. The council has also worked hard to make £200 million in savings since 2010. However, ongoing financial pressures mean that we have to save a further estimated £30 million by 2024.

Work continues on setting the budget, which will be discussed in a series of Cabinet and other meetings in the new year, ahead of the official budget setting Full Council meeting on Wednesday 24 February 2021.

Peter Okali, Chief Executive of Tower Hamlets CVS

With over 1,500 community groups and organisations, Tower Hamlets has an active and vibrant community and voluntary sector (CVS).

Together, these groups have provided vital support to our vulnerable communities in what has been a very challenging year.

I wanted to share three examples of the contribution they have made.

Tower Hamlets Friends and Neighbours is a community organisation that has been running for over 70 years. It provides face-to-face befriending services for around 250 vulnerable older people. The start of the pandemic was a critical time for the group, but they quickly adapted their services, providing online befriending contact that was a lifeline for people.

New volunteers were successfully recruited to the organisation to help with the extra demand Covid-19 created and the team is now exploring how they can sustain this level of support more permanently.

Then there is Age UK, which has delivered over 100,000 meals to vulnerable older people since the lockdown started. How incredible is that? Age UK has also launched a virtual community centre so that those they support can access classes online, alongside the creation of a 'digital buddy' scheme matching volunteers with older people who need digital support.

Then there is the Women's Inclusive Team, which provides information, advice and guidance support to Somali women. Since the lockdown the team has expanded its service to also support families and directly recruited over 150 volunteers to help provide over 25,000 halal meals. The team has recently been nominated for a Queens Voluntary Service award for its work.

These examples highlight the vital role that community groups have played and continue to provide. Their support has been nothing short of incredible.

Support will continue for existing clients over the festive season and emergency support will still be available through either the council or on our website www.thcvs.org.uk

Finally, we must acknowledge the hundreds of volunteers, as none of this work would have been possible without them. We have truly seen the best of the community in Tower Hamlets and it is a pleasure to be part of the community here. Thank you and season's greetings to all.

London waxay ku jirtaa aaga digniinta sare la gashay

Keeping Tower Hamlets safe

HARMONY BENGALI & SOMALI NEWS

London, ayna ku jiraan Tower Hamlets, ayaa hadda ah aaga digniinta sare, heerka 2, ee nidaamka digniinta maxaliga ah ee dawladu u dajisay COVID-19. Tani waxay ka dhigan tahay in talo cusub lasoo saaray si ay gacan uga gaysato xakamaynta faafinta Covid-19.

Qofkasta waa inuu hadda raacaan xeerarka:

- Waa inaysan isku imaan qoysasku gudaha guryaha marka laga reebo kooxda iska agdhow. Ugu badnaan lix qof ayaa isku imaan kara banaanka.
- Kaliya kalaabyada iyo maqaayadaha bixinaaya cuntada ayaa furnaan doono khamrada waa in la baxshaa kaliya marka ay la socdaan cuntooyin muhiim ah. Dalabaadka u danbeeya waxay noqon doonaan 10pm ayadoo dhammaan xarumaha raaxada la xiri doono 11pm.
- Dhammaan goobaha tafaariiqda ayaa furnaan doona, ayna ku jiraan maaweelooyinka sida shaneemooyinka iyo daryeelka shaqsigaa ah sida timo qurxiyayaasha iyo daryeelka shaqsigaa ah.
- Yaree safarada la sameeyo mar kasta oo ay suuragalayso. Ka dheeroow socdaal aad ku aado meelaha ku jira heerka 3 ilaa inaad u socdaalayso maahaa shaqo, waxbarasho, balamo caafimaad, waajibbaadka daryeelka ama xaalado kale oo degdeg ah, sida inaad dhaawac

ama waxyeelo ka cararayso.

- Shaqee adoo guriga jooga haddii aad awoodo.
 - Dugsiyada iyo xarumaha waxbarashu way furnaan doonaan.
 - Goobaha cibaadadu waa furan yihiin, laakiin dadku lama joogi karaan qof ka baxsan qoyskooda ama kooxda ay istaageeraan. Xeerarka kala fogaanshaha bulshada waa in la raacaan markasta.
 - Aroosyada iyo iskaashiyada ayaa la qaban karaa ugu badnaan 15 marti ah halka tacsiiyada iyo baroordiiqda ayadoo ay kaqaybgalayaan ugu badnaan 30 qof.
 - Jiimamka iyo xarumaha nasiinada ayaa dib loo furi doona. Jimicsiga iyo ciyaaraha la nidaamshay ayaa lagu qaban karaa banaanka lagumana qaban karo gudaha waana inaysan dadka qoysaska kaladuwan isdhexgalin ama dadka ka baxsan kooxda istaageerta.
 - Munaasabada waawayn sida ciyaarta iyo bandhiga ayaa furnaan doona laakiin waxaa lagu koobayaa ku dhawaad 50 boqolkiiba dadkii goobtu qaadi kartay ayadoo xeerarka kala fogaanshaha bulshada la raacaayo.
- Xasusnoow, talada iyo tilmaanta ku xeeran COVID-19 way isbadali kartaa si dhakhso ah si looga falceliyo fayraska. Gobalada iyo aagaga ayay dib u eegis ku samayn doontaa dawladu 14 maalmood ba marka feejignoow oo la soco talooyinka ku aadan COVID-19. Raac xeerarka oo dhawr badqabka qof kasta.

Dhawr badqabkaaga xiligaan jiilaalka



How to
get ready
for winter
- Page 6

Hoos waxaa ku qoran qaar kamid ah tilmaamaha ugu waawayn ee ku aadan u diyaar garoowga iyo dhawrista badqabka xili jiilaaleedka.

Xog dheeraad ah ayaa ka helayaas oonleanka www.towerhamlets.gov.uk/winter

- Qaado talaalkaaga hargabka ee bilaashka ah. Dadka da'doodu ka wayn tahay 65, uurka leh ama qaba xanuunka mudada dheer ayaa u qalma talaalka. La hadal dhakhtarkaaga guud (GP) ama farmashiilaha si aad u balansato talaalka hargabka ama booqo barta oonleanka www.myvaccinations.co.uk
- Covid-19 wuxuu saamayn ku reebay dhammaanteen, marka waa xilgii ugu muhiimsanaa inaad dhawrno badqabkeena iyo caafimaadkeena. Hel talooyinkii ugu danbeeyay oo aad ka helayso oonleanka www.towerhamlets.gov.uk/coronavirus
- Daryeel naftaada iyo dadka

bulshadaada ee aadka u nugul. Xog dheeraad ah oo loogu talagalay dadka waajahaaya go'doonka iyo kalinimada ayaa laga heli karaa barta oonleanka www.towerhamlets.gov.uk/loneliness

- Ma doonaysaa inaad qof la hadasho? Laynka gurmada caafimaadka dhimirka ee Tower Hamlets waa mid bilaash ah waxaana la heli karaa 24/7 - 0800 073 0003
- Lahoow firfircooni adoo nasanaaya banaankana soo wareegaaya markaad awoodo. Kusoo wareeg lug, baaskil, rucleyn ama la ciyaar carruurtaada. Xitaa kaliya socoshada 20 daqiiqo maalintii ayaa farqi u samaynaysa caafimaadkaaga guud ee dhimirka iyo fayaqabka jirka.
- Kululee gurigaaga adoo ku xiraaya kululeeyaha heerkul sax ah (18-21 Oc). Waxaad la xariiri kartaa injineer ka diiwaan gashan Gas Safe si aad u xaqiijiso in qalabkaaga korontadu ay si sax ah u shaqaynayaan ayna badbaado leeyihiin www.gassaferegister.co.uk
- Hayso cunto kulul iyo cabitaano maalinta oo dhan oo cun miro iyo khudaar badan - kuwa la qabooyiyay iyo kuwa qasaca ku jira ayaa sidoo kale cuni kartaa. Xasusnoow inaad guriga dhigato alaabaha muhiimka ah ayna ku jiraan cuntada qasacadaysan iyo tan qalalan iyo daawooyinka qufaca iyo qaboowga.

কোভিড টিয়ার সিস্টেম সম্পর্কে অবহিত হোন এবং মেনে চলুন Following the Covid Tiers – page 4

এটি প্রকাশের সময় (১১ ডিসেম্বর), টাওয়ার হামলেটস টিয়ার-১ (স্তর-১) এর 'উচ্চ সতর্কতা অঞ্চল' এর আওতাভুক্ত রয়েছে। তবে কিছু কিছু এলাকা, বিশেষত উত্তর-পূর্ব লন্ডনে সংক্রমণের হার বৃদ্ধি অব্যাহত রয়েছে। ১৬ ডিসেম্বর এবং পরে নিয়মিতভাবে টিয়ার সিস্টেম পর্যালোচনা করার প্রেক্ষিতে টাওয়ার হামলেটসের রেটিং বা স্তরভিত্তিক অবস্থানের পরিবর্তন হতে পারে।

নীচে আমরা টিয়ার - ১ (হাই এ্যালার্ট বা উচ্চ সতর্কতা) এবং টিয়ার - ২ (ভেরি হাই এ্যালার্ট বা অতি উচ্চ সতর্কতা) এর গুরুত্বপূর্ণ কয়েকটি বিধিনিষেধের রূপরেখা তুলে ধরলাম। সম্পূর্ণ বিধিনিষেধ পাওয়া যাবে gov.uk/coronavirus.

টিয়ার ২ এবং টিয়ার ৩:

কাজ এবং ব্যবসা: বাড়িতে থেকে কাজ করতে পারেন— এমন প্রত্যেকেই এটি করা উচিত

খুচরা বিক্রোতা ও ব্যক্তিগত পরিচর্যা: উন্মুক্ত

শিক্ষা: আলি ইয়ার্স সেটিংস, স্কুল, কলেজ ও বিশ্ববিদ্যালয় সমূহ খোলা রয়েছে। চাইল্ডকেয়ার, অন্যান্য তদারকিবীন ক্রিয়াকলাপ এবং চাইল্ডকেয়ার বাবল এর অনুমোদন রয়েছে।

উপাসনার স্থান: উন্মুক্ত, তবে নিজ পরিবার কিংবা সাপোর্ট বাবল অর্থাৎ সহায়তাকারী লোকজনের বলয়ের বাইরের কারো সাথে মেলামেশা করা যাবে না।

এক্সারসাইজ বা ব্যায়াম: ঘরের বাইরে উন্মুক্ত পরিবেশে ক্রাস এবং প্রান্ত বয়স্কদের জন্য সংগঠিত খেলার আয়োজন করা যাবে। তবে, ভিন্ন পরিবারের লোকদের অংশগ্রহণ থাকলে ঘরের ভেতর অর্থাৎ অভ্যন্তরীণ পরিবেশে এটা করা যাবে না। পেশাদার এ্যাথলেটস, অনুরূপ ১৮ অথবা ডিজেবল লোকজনের জন্য অর্গেনাইজড এন্টিভিটিজের অনুমোদন রয়েছে। (দ্রষ্টব্য: টিয়ার ৩ বা স্তর ৩ এ পরস্পরের স্পর্শ বা ছোঁয়া লাগে এমন ক্রিয়াকলাপ অবশ্যই এড়িয়ে চলতে হবে।)

ইনডোর লেজার: উন্মুক্ত (দ্রষ্টব্য: টিয়ার ৩ এ গ্রুপ এন্টিভিটি অর্থাৎ দলবদ্ধ ক্রিয়াকলাপ নিষিদ্ধ)

বিয়ে এবং অস্ট্রোপিক্রিয়া: বিয়ে, সিভিল পার্টনারশীপ, বিয়ে-উত্তর অভ্যর্থনা অনুষ্ঠান এবং ওয়েকস বা নিশি পালন করার অনুষ্ঠানে সর্বোচ্চ ১৫ জন অতিথি অংশ নিতে পারবে। জানাজা বা অস্ট্রোপিক্রিয়ায় সর্বোচ্চ ৩০ জন অংশ নিতে পারবে। (দ্রষ্টব্য: টিয়ার ৩ এ ওয়েডিং রিসেপশনস বা বিবাহ-উত্তর সন্ধ্যা অনুষ্ঠানের অনুমতি নেই)

টিয়ার-২ ও টিয়ার-৩ এর মধ্যকার পার্থক্য পরিবার ও বন্ধুদের সাথে সাক্ষাত

টিয়ার ২: সাপোর্ট বাবল অর্থাৎ সাহায্যকারীদের বলয়ের মধ্যে থাকা লোকজন ছাড়া অন্যকোন পরিবার বা অন্য কারো সাথে ঘরের ভেতরে মেশা যাবে না। বাইরের উন্মুক্ত পরিবেশে সর্বোচ্চ ৬ জন একত্রিত হতে পারবেন।

টিয়ার ৩: ইনডোর অথবা আউটডোরের বেশিরভাগ স্থানেই ভিন্ন পরিবারগুলোর মধ্যকার মিশ্রণ নিষিদ্ধ (সাপোর্ট বাবলের লোকজনের ক্ষেত্রে এটি প্রযোজ্য নয়)

বার, পাব এবং রেস্টুরেন্ট

টিয়ার ২: পাব এবং বার অবশ্যই বন্ধ থাকবে। হসপিটালি ডেন্সি অর্থাৎ ক্যাফে/রেস্টুরেন্ট জাতীয় প্রতিষ্ঠানগুলো পর্যাপ্ত পরিমানে খাবারের সাথেই কেবলমাত্র এ্যালকোহল পরিবেশন করতে পারবে। রাত ১০টার পর কোন অর্ডার নেয়া যাবে না এবং রাত ১১টায় প্রতিষ্ঠান পুরোপুরি বন্ধ করতে দিতে হবে

টিয়ার ৩: টেকওয়ে বা ডেলিভারী ছাড়া হসপিটালিটি সেক্টরের সব কার্যক্রম বন্ধ থাকবে

এন্টারটেইনমেন্ট

টিয়ার ২: উন্মুক্ত

টিয়ার ৩: ইনডোর ডেন্সিসমূহ বন্ধ থাকবে

রাতে অবস্থান করা

টিয়ার ২: পরিবারের সাথে অথবা সহায়তাকারী বলয়ের মধ্যে অনুমোদিত

টিয়ার ৩: যাদের সাথে বসবাস করছেন, তারা এবং সাপোর্ট বাবলে থাকা লোকজন ছাড়া অন্যদের সাথে রাত না কাটানোর পরামর্শ

ভ্রমণ

টিয়ার ২: আপনার স্বাভাবিক যাতায়াত বা ভ্রমণের সংখ্যা কমিয়ে আনুন। দিনের ব্যস্ত সময়ে গণপরিবহন ব্যবহার এড়িয়ে চলুন। একেবারেই প্রয়োজন না হলে টিয়ার ৩ এর আওতাধীন এলাকাগুলোতে প্রবেশ করা থেকে বিরত থাকুন

টিয়ার ৩: কাজ কিংবা শিক্ষার মতো আবশ্যিকীয় না হলে নিজ এলাকার বাইরে যাওয়া থেকে বিরত থাকুন

আবাসিক থাকার ব্যবস্থা

টিয়ার ২: উন্মুক্ত

টিয়ার ৩: বন্ধ



টিয়ার ২ বা ৩, যেটাই হোক
না কেন - নিজের এবং
অন্যদের সুরক্ষা নিশ্চিত করুন
হাত, মুখ, স্থান (দূরত্ব) - এই
তিনটি বিষয়ে সবসময় খেয়াল রাখুন

উৎসবকালীন সময় উদযাপন করুন নিরাপদে Staying Covid-19 safe during the festive season – page 5

ফেস্টিভ সিজন অর্থাৎ বড়দিন বা ক্রিসমাসের উৎসবের সময় ঘনিষ্ঠ আসার সাথে সাথে আমাদের অনেক বাসিন্দাই

তাদের পরিবারের সাথে উৎসবের দিনগুলো কাটানোর জন্য অপেক্ষা করছেন। ২৩ থেকে ২৭ ডিসেম্বর - এই পাঁচ দিন লোকজন সর্বোচ্চ তিনটি পৃথক পরিবারের সমন্বয়ে একটি বাবল বা বলয় তৈরী করতে পারবেন। সরকারী গাইডলাইন অনুযায়ী এটির অনুমোদন দেয়া হলেও, অনুগ্রহ করে সর্বোচ্চ সতর্কতা অবলম্বন করুন, বিশেষ করে কোন বয়স্ক এবং বিদ্যমান স্বাস্থ্যগত দুর্বলতার কারণে কেউ কেউ ঝুঁকির মধ্যে পড়তে পারেন - এই ব্যাপারে সতর্কতা অবলম্বন করা খুবই জরুরী। যদি আপনি উদযাপনের এবং বলয় তৈরীর পরিকল্পনা করেন, তাহলে তা কিভাবে নিরাপদে করা যায়, সেসম্পর্কে জানতে ভিজিট করুন -

www.towerhamlets.gov.uk/coronavirus



শীতের এই সময়ে সুস্থ্য থাকুন

Keep well this winter- page 6

কোভিড-১৯ এর মাহামারীটি আমাদের সকলের ওপরই দারুণ প্রভাব ফেলেছে এবং ভাইরাসের প্রাদুর্ভাব ও দেশজুড়ে কার্যকর থাকা নানান বিধিনিষেধের ফলে ঘরের মধ্যে অবস্থান করতে হচ্ছে বলে সামাজিকভাবে বিচ্ছিন্ন হয়ে পড়ার সংখ্যা বাড়ছে। শীতকালীন মাসগুলো আসার প্রেক্ষিতে আমাদের নিজেদের এবং কাছাকাছি থাকা মানুষগুলোর ভালো থাকাটা এখনকার মতো এত গুরুত্বপূর্ণ কখনোই ছিলো না।

শীত মওসুমের জন্য প্রয়োজনীয় প্রস্তুতি গ্রহণের মাধ্যমে লোকেরা অসুস্থতা থেকে নিজেদেরকে রক্ষা করতে এবং অত্যাবশ্যকীয় স্বাস্থ্যসেবাগুলোর ওপর অতিরিক্ত চাপ ফেলা থেকে রেহাই দিতে সহায়তা করতে পারেন। উষ্ণ ও ভালো খাবার কয়েকটি টিপস এখানে তুলে ধরা হলোঃ

- ▶ যদি আপনি দুর্বল হিসেবে বিবেচিত হন - ৬৫ বা তদোর্ধ্ব বয়সী, গর্ভবতী বা দীর্ঘমেয়াদি স্বাস্থ্য জটিলতা থাকে - তাহলে আপনি ফ্রি ফ্রু জাব বা বিনামূল্যে ফ্রু টিকা পাওয়ার যোগ্য। এ বছর নিজেই এবং নিজের চারপাশের মানুষজনকে ফ্রু মারাত্মক জটিলতাকে রক্ষা করতে ফ্রু টিকা নেয়াটা অন্যারের চেয়ে অনেক বেশি গুরুত্বপূর্ণ। এতদ্ব্যতীত আপনি আপনার জিপি বা ফার্মাসিস্টের সাথে কথা বলতে পারেন অথবা অনলাইনে ফ্রু টিকা দেয়ার স্লট বুক করতে পারেন।

- ▶ ফ্রু জাব সংক্রান্ত আরো তথ্যাদি এনএইচএস এর ওয়েবসাইটে পাবেন - www.nhs.uk/conditions/vaccinations
- ▶ যদি সম্ভব হয় তাহলে ভালো করে উষ্ণ কাপড়ে নিজেকে মুড়ে বাইরে গিয়ে সক্রিয় থাকুন। যেমন হাঁটতে, সাইকেল চালাতে, জগ করতে অথবা বাচ্চাদের সাথে খেলতে বের হোন। এমন কী প্রতিদিন কমপক্ষে ২০ মিনিট চলাকোরা আপনার সামগ্রিক মানসিক ও শারীরিক সুস্থ্যতায় পার্থক্য আনতে পারে।
- ▶ সারা দিন ধরে গরম খাবার ও পানীয় পান করুন। প্রচুর পরিমাণে ফলমূল ও শাকসব্জী খাবেন।
- ▶ ঘরকে গরম রাখতে থার্মোস্ট্যাটে সঠিক তাপমাত্রা সেট করুন (১৮ থেকে ২১ ডিগ্রী)।
- ▶ ক্যান বা টিনজাত খাবারসহ নিত্যপ্রয়োজনীয় অর্থাৎ মৌলিক আইটেমগুলো এবং সর্দি-কাশির ওষুধগুলো ঘরে রাখুন।
- ▶ বাসার সকল ইলেক্ট্রিক ও গ্যাসচালিত এ্যাপ্লায়েন্সে বা সরঞ্জামাদি সঠিকভাবে কাজ করছে কি-না যাচাই করতে দেখতে গ্যাস সেক্ফ রেজিস্টার্ড ইঞ্জিনিয়ারের (www.gassaferegister.co.uk) সাথে যোগাযোগ করুন।

সাধারণত শীতের মাসগুলোতে, অধিক সংখ্যক মানুষই সামাজিকভাবে বিচ্ছিন্ন হয়ে পড়ার অভিজ্ঞতার মুখোমুখি হন। কোভিড-১৯ এর কারণে অথবা স্বাস্থ্য ও বয়সগত কারণে বৃদ্ধি থাকায় যাদেরকে ঘরের মধ্যে থাকতে হচ্ছে, তাদের ক্ষেত্রে এই সামাজিক বিচ্ছিন্নতা বেড়েছে। ভাগ্যক্রমে আমাদের এই বরায় অনেকগুলো সার্ভিস ও কমিউনিটি সংগঠন রয়েছে যারা এব্যাপারে সহায়তামূলক সেবা প্রদান করছে। কাউন্সিলের www.towerhamlets.gov.uk/loneliness এই ওয়েবসাইটে এব্যাপারে আরো বিস্তারিত তথ্য পাবেন।

যদি আপনি কোন প্রবীণ কিংবা বৃদ্ধি থাকে কারো কাছাকাছি বসবাস করে থাকেন, তাহলে তাদের কোন সাহায্যের দরকার আছে কি-না সেব্যাপারে নিরাপদে থেকে নিয়মিত খোঁজ নিন। যদি আপনি শক্তিত থাকেন যে কেউ একজন হয়তো ঠান্ডা আবহাওয়ায় মোকাবেলা করতে পারছেন না, তাহলে আপনি ০২০ ৭৩৬৪ ৫০০৫ নাম্বারে কল করে আমাদের এডাল্ট সোশ্যাল কেয়ার টিমের সাথে যোগাযোগ করতে পারেন। এছাড়া www.towerhamlets.gov.uk/winter- এই ওয়েবসাইটে গিয়েও এতদসংক্রান্ত বিস্তারিত তথ্য পাবেন।

টাওয়ার হ্যামলেটস আপনার হাতের মুঠোয় Tower Hamlets at your fingertips - page 11

‘লাভ ইওর নেইবারহুড’ এ্যাপটি ডাউনলোড করতে ভুলবেন না। এই এ্যাপ ব্যবহার করে আপনি অতি সহজেই কাউন্সিলের সাথে সংশ্লিষ্ট যেকোন ইস্যু সম্পর্কে রিপোর্ট করতে, বারার এমন কোন বিষয় যা আপনি ভালোবাসেন - তা শেয়ার করতে, বাতাসের মান সম্পর্কিত তথ্য-উপাত্ত জানতে, রাস্তা বন্ধ থাকা কিংবা কোন ইভেন্ট সম্পর্কে জানতে, ময়লা আবর্জনা ও রিসাইক্লিং সামগ্রী কালেকশন সংক্রান্ত তথ্য সহ অনেক কিছু জানতে পারবেন। এ্যাপল অথবা গুগল প্লে স্টোরে গিয়ে ‘লাভ ইওর নেইবারহুড’ লিখে সার্চ দিলেই এ্যাপটি পেয়ে যাবেন - ডাউনলোড করে এখনই ব্যবহার করুন।

ডে সাপোর্ট সার্ভিস বিষয়ক কনসালটেশন Consultation on day support services

আমরা বর্তমানে এডাল্ট সোশ্যাল কেয়ার সার্ভিসের আওতাধীন ডে সাপোর্টের ক্ষেত্রে প্রস্তাবিত পরিবর্তনগুলো নিয়ে কনসালটেশন বা পরামর্শ কার্যক্রম পরিচালনা করছি। ডে সাপোর্ট সার্ভিসে প্রাপ্তবয়স্কদের যে ধরনের যত্ন ও সহযোগিতা দরকার তেমন কার্যক্রম, সেবা ও ডে সেন্টারগুলো অন্তর্ভুক্ত। প্রস্তাবগুলো সম্পর্কে আপনার মতামত আমরা শুনতে চাই। আমাদের অনলাইন কনসালটেশন এবং এনগেইজমেন্ট ওয়েবসাইট ‘লেট’স টক টাওয়ার হ্যামলেটস’ ভিজিট করে আপনার অভিমত আমাদের জানান। এই কনসালটেশন চলবে ৪ জানুয়ারি ২০২১ তারিখ পর্যন্ত। ডে সাপোর্ট সম্পর্কে আপনার অভিমত জানাতে ভিজিট করুন: www.talk.towerhamlets.gov.uk/day-support-changes

লাইব্রেরী সার্ভিসের ভবিষ্যত সম্পর্কে মতামত দিন

Have your say on council's library services - page 34

বরার লাইব্রেরী সার্ভিসের ভবিষ্যত সম্পর্কে নিজেদের অভিমত দেয়ার জন্য কাউন্সিলের পক্ষ থেকে বাসিন্দাদের প্রতি আহ্বান জানানো হয়েছে। লাইব্রেরী সার্ভিসের ভবিষ্যত নির্ধারণে কাউন্সিল ৩০ নভেম্বর সোমবার থেকে গণপরামর্শ অর্থাৎ কনসালটেশন কার্যক্রম শুরু করেছে। কাউন্সিল ফাউন্ডিং অর্থায়নের ক্ষেত্রে সরকারের অব্যাহত কর্তন এবং কোভিড-১৯ সংকট মোকাবেলার কারণে কাউন্সিলকে ২০২৪ সালের মধ্যে ৩০ মিলিয়ন পাউন্ড শাস্রয় করতে হবে। সরকারি কৃষ্ণতা বা অব্যাহত আর্থিক কর্তনের কারণে ২০১০ সাল থেকে এ পর্যন্ত কাউন্সিলকে ২০০ মিলিয়ন পাউন্ড শাস্রয় করতে হয়েছে।

আগামী ২৯ জানুয়ারি ২০২১ তারিখ পর্যন্ত এই অনলাইন কনসালটেশন চলবে। talk.towerhamlets.gov.uk/ideastores - এই ওয়েবসাইটে গিয়ে আপনি সহজেই অনলাইন সার্ভেতে অংশ নিয়ে আপনার মতামত জানাতে পারেন। যদি আপনার নিজস্ব ওয়াই-ফাই কিংবা কম্পিউটার ব্যবহারের সুবিধা না থাকে, তাহলে বা, ক্রিসপ স্ট্রিট অথবা হোয়াইটচ্যাপল আইডিয়া স্টোরে গিয়ে কম্পিউটার ব্যবহারের জন্য সেশন বুক করতে পারেন।

বো’র লিভেবল স্ট্রিটস প্রোগ্রামকে সমর্থন করেছেন বাসিন্দারা

Residents back Liveable Streets in Bow - page 34

কাউন্সিলের লিভেবল স্ট্রিটস প্রোগ্রামের অংশ হিসেবে বো এলাকায় ট্রাফিক বা যান চলাচলকে মাত্রাকে সহনীয় করতে আগামী বছর বিভিন্ন প্রকল্প বাস্তবায়ন করা হবে।



রোমান রোড মার্কেট এলাকা, স্থানীয় শিক্ষাপ্রতিষ্ঠান গুলোর আশে পাশে এবং আবাসিক এলাকার রাস্তাগুলো দিয়ে অন্যান্য যাওয়ার উদ্দেশ্যে প্রতি দিন প্রায় ১৬ হাজার মোটর যান চলাচল করে থাকে। এই বিপুল সংখ্যক মোটর যানের চলাচল নিয়ন্ত্রণ করার বিভিন্ন পরিকল্পনাকে স্থানীয় জনসাধারণের ৭০ শতাংশ সমর্থন করেছেন। সড়ক নিরাপত্তা ও বায়ুর

মান বাড়ানোর লক্ষ্যে প্রস্তাবিত উন্নয়ন পরিকল্পনা নিয়ে গত ১৮ মাস ধরে স্থানীয় বাসিন্দাদের সাথে আলোচনা করা হয়। এতে ৩,৮০০ বাসিন্দা অংশ নেন।

কনসালটেশনের ফলাফলের সংক্ষিপ্তসার, চূড়ান্ত ডিজাইন, সুপারিশসমূহ সম্পর্কে জানতে হলে ভিজিট করুন: talk.towerhamlets.gov.uk/lisbow

তিনটি ওয়ার্ডের নাম পরিবর্তনের প্রস্তাব

Proposed ward name changes in Tower Hamlets - page 34

বরার তিনটি ওয়ার্ডের নাম পরিবর্তনের প্রস্তাব বিবেচনা করার জন্য গণপরামর্শ বা কনসালটেশন কার্যক্রম শুরু হয়েছে।

পরিবর্তিত নামগুলো সম্পর্কে যে প্রস্তাব করা হয়েছে, সেগুলো হলোঃ বেথনাল গ্রীন ওয়ার্ডের নাম হবে বেথনাল গ্রীন ইস্ট ওয়ার্ড, সেন্ট পিটার্স ওয়ার্ডের নাম পরিবর্তন হবে বেথনাল গ্রীন ওয়েস্ট ওয়ার্ড হিসেবে এবং ক্যানরী ওয়ার্ড ওয়ার্ডের নাম প্রস্তাব করা হয়েছে মিলওয়াল ওয়ার্ড।

২০২০ সালের জানুয়ারি মাসে সম্পন্ন হওয়া কাউন্সিলের পোলিং প্লেস ও পোলিং ডিস্ট্রিক্ট পর্যালোচনার সময় পাওয়া মতামতের প্রতিক্রিয়া হিসেবে এই নাম পরিবর্তন বিষয়ক কনসালটেশন হচ্ছে। এ ব্যাপারে কাউন্সিল চূড়ান্ত সিদ্ধান্ত নেয়ার আগে সম্ভাব্য পরিবর্তন সম্পর্কে জনসাধারণের সাথে পরামর্শ করার আইনী বাধ্যবাধকতা রয়েছে।

talk.towerhamlets.gov.uk/wardnames - এই ওয়েবসাইটে গিয়ে আপনি আপনার অভিমত জানাতে পারেন।

ড্রাগের বিরুদ্ধে লড়াই অব্যাহত রয়েছে

Fight to tackle drugs continues - page 18

মহামারীর কারণে অপরাধ দমনে আমাদের প্রচেষ্টা থেমে নেই। বরার বিভিন্ন আবাসিক ঠিকানায় তল্লাশি অভিযান চালিয়ে অনেককে গ্রেফতার এবং বিপুল পরিমাণ ক্রাস এ ড্রাগস জব্দ করা হয়েছে।

মাদক কেনাবেচা এবং সমাজবিরোধী আচরণজনিত কার্যকলাপের বিরুদ্ধে টাওয়ার হ্যামলেটসের সিসিটিভি টিমের সহযোগিতায় পুলিশের নিয়মিত অভিযান ‘অপারেশন কোন্টিনাম’ এর অংশ হিসেবে গত কয়েক মাসে প্রায় ৬টি সাঁড়াশি অভিযান চালানো হয়। শুধু গত অক্টোবর মাসের একটি অভিযানে হোয়াইটচ্যাপল এবং মাইল এন্ড এলাকা থেকে ২১ জনকে গ্রেফতার সহ বিপুল সংখ্যক মাদক ও নগদ অর্থ উদ্ধার করা হয়।

মাদক কেনাবেচা বা ড্রাগ ডিলিং সম্পর্কে যদি আপনার কাছে কোন তথ্য থাকে, তাহলে ১০১ এ কল করে অথবা www.met.police.uk এই ওয়েবসাইটে গিয়ে পুলিশের কাছে রিপোর্ট করতে পারেন।



Protect yourself and others

যদি আপনার মধ্যে কোভিড-১৯ এর কোন লক্ষণ বা উপসর্গ, যেমন খুব বেশি জ্বর, নতুন করে অথবা ক্রমাগত কাশি, কিংবা স্বাদ/স্রোণের স্বাভাবিক অনুভূতিতে পরিবর্তন আসে বা কমে যায়, তাহলে বিনামূল্যে টেস্ট বুক করুন এবং টেস্টের রেজাল্ট না পাওয়া পর্যন্ত ঘরের মধ্যে থাকুন।

আপনার টেস্ট এর ফল যদি পজিটিভ হয় অথবা পজিটিভ হয়েছে এমন কারো সংস্পর্শে যদি আপনি এসে থাকেন এবং এনএইচএস টেস্ট এন্ড ট্রেস কর্তৃক আপনাকে সেক্স-আইসোলেট বা স্ব-বিচ্ছিন্ন অবস্থায় থাকার জন্য বলা হয়, তাহলে নিজ ঘরে অবস্থান করুন।

জরুরী খাদ্য সাহায্যের আবেদন

Emergency food appeal - page 7

কোভিড-১৯ মহামারীর চলমান চ্যালেঞ্জের মধ্যে এই শীতে লোকজন যাতে ক্ষুধার্ত না থাকে, তা নিশ্চিত করতে টাওয়ার হ্যামলেটস কাউন্সিলের পক্ষ থেকে একটি তহবিল সংগ্রহ অভিযান শুরু করা হয়েছে। বরার অসচ্ছল অসহায় লোকজনকে খাদ্য সহায়তা

কাউন্সিলের রেসিডেন্টস সাপোর্ট স্কীমের মাধ্যমে প্রায় ৯ লাখ ৫০ হাজার পাউন্ড এখাতে ব্যয় করেছে। তারপরও এ বছরের প্রয়োজনীয়তা অন্য যেকোন সময়ের তুলনায় অনেক বেশি। বরার বাসিন্দা, ব্যবসায়ী ও কাউন্সিলের সকল অংশীদারদের প্রতি আমাদের আবেদন - ইমার্জেন্সি ফুড আপীলে সাড়া দিন এবং আর্থিক সহযোগিতা করুন।



দিতে মাসে ৫০০০ পাউন্ডের মতো ব্যয় নির্বাহের লক্ষ্য নিয়েই বরার ৩১টি ফুড ব্যাংকের পক্ষ থেকে এই আপীল করা হয়েছে। স্থানীয় অনেক খাবার সরবরাহকারী সংগঠন চাহিদার নিজস্ব বিনীত বৃদ্ধি লক্ষ্য করে আসছে এবং এখন এটি প্রায় সংকট পর্যায়ে পৌঁছেছে।

মহামারি শুরুর পর থেকে এখন পর্যন্ত যাদের সহায়তার প্রয়োজন, তাদের কাছে আমরা ১৯০ টন খাবার পৌঁছে দিয়েছি এবং

আপনাদের সহযোগিতার ফলে স্থানীয় ফুড ব্যাংকগুলোর পক্ষে অত্যন্ত গুরুত্বপূর্ণ এই খাদ্য সহায়তা সেবা চালিয়ে যাওয়া সম্ভব হবে। তাই, দয়া করে এই আপীলের প্রতি সহতি দেখান এবং স্থানীয় কমিউনিটিগুলোকে সহায়তা দিতে আমাদের সাহায্য করুন। আগ্রহীরা www.spacehive.com/tower-hamlets-food-appeal - এই ওয়েবসাইটে গিয়ে অনুদান দিতে পারবেন।



Santa Claus: Father Christmas and St Nicholas increasingly became one figure, clad in now-traditional red

Winter is coming

A look back at the rituals for the change of the seasons

HISTORY

By **JOHN RENNIE**

Londoners have had a long and complicated relationship with the midwinter solstice and its celebration. Many of the elements of a 'traditional' Christmas are far more modern than we pretend, and in a multicultural London, the Hollywood-ised Christian Christmas doesn't fit everybody anyway. The winter festival long predated the birth of Christ, and was in any event a festival common to many faiths and non-believers too.

Our early ancestors must have viewed with horror the ever-dwindling days of winter, as the planet spun towards the winter solstice, wondering if warmth, sunshine and an adequate supply of food would ever return. For hunter-gatherers and the early farmers, charting the year to ensure the food lasted till spring was a crucial calibration. Animals would be slaughtered in midwinter so they didn't

have to be fed over the winter. Food would be stored and preserved, and eked out until the new growth in spring.

And then, one big celebration of feasting, fire and light on the darkest of days. The slaughtered cattle would be eaten, wine and beer fermented through the year would be ready to drink, and the tribe would awaken on the first day of the astronomical new year, with a raging hangover, but also with a few seconds of extra daylight.

Over the centuries before the birth of Christ, the solstice celebrations in our bleak and cold corner of Europe had multiplied. But most were modest, and in tune with the seasons. The harvesting of evergreen holly, ivy and mistletoe was a nod to the persistence of nature in the face of the frost. This festival that evolved in Nordic and Celtic Europe was called Yule, which comes from the same word root as 'wheel'. The sun, in our ancient mythology, was a wheel that endlessly spun the seasons.

Every culture had its variation. In

India, the solstice evolved into Makar Sankranti, observed in January and marking the end of the winter and the start of the longer days. Pongal, the three-day Hindu festival held

throughout South India, is celebrated on the winter solstice, when, according to the traditional Hindu system of reckoning, the sun, having reached its southernmost point, turns to the north



A Victorian Christmas card: Another Victorian tradition, now sadly largely killed off by electronic communication

again and re-enters the sign of makara (Capricorn), usually on January 14.

In ancient Persia (and modern Iran) they would celebrate Yalda night, the 'longest and darkest night of the year'. In East Asian countries and religions, Dongzhi, the winter solstice section of the 24 divisions of the year, would be celebrated.

The Romans would celebrate Saturnalia. As the old year ended, old rules would be subverted (for a day at least). Masters would wait on servants, old grudges were set aside, courts and schools closed, and ceasefires would be declared. These traditions of 'misrule and chaos' would appear again in medieval English celebrations of Christmas. But as ever, the holiday had even earlier roots. At the head of the pantheon of gods sat Sol Invictus, the unconquered sun, and originally a Syrian deity. His birthday was celebrated on December 25.

The Abrahamic religions of Judaism, Christianity and Islam each drew on earlier belief systems of course, and shared a god. And their various holidays (or holy days) were anchored in the turning of the seasons, different though they first appear.

Ramadan, following the cycle of the moon, moves steadily back through the months year by year. Hanukkah shifts between late November and late December. Christianity, meanwhile, often simply co-opted the existing pagan celebrations into its calendar.

Throughout the Middle Ages, as

London became richer, there was more surplus splurge on the midwinter festival.

The Church reinvented the celebration as 'Christ Mass' during the 11th century, and it now included a lavish run-up during Advent, and partying during the 12 days after, until Epiphany on January 6. Life would begin again in England after that day, with Plough Monday marking the day when – with spring on the distant horizon – farmers and peasants would attempt to get a harrow back into the frozen winter ground.

By the 1640s, the English parliament was recognising what had long been a concern in the European Church – that Rome was too focused on symbols, revenue-generating festivals and other earthly delights. They also complained that the celebration had evolved, as celebrations tend to, from piety into a weeks-long drunken carnival. So the Puritans banned Christmass. Cromwell stood up in the Palace of Westminster and declared that December 25 should be like any other day, with business as usual.

The English have long been a strange mixture of deference and defiance though, and dislike being told what's good for them. Riots broke out in London and other southern towns.

Canterbury, the seat of the Church in England, was controlled by protestors shouting royalist slogans and decking doorways with holly, ivy and mistletoe. These were very English rioters, ones

who also put up your Christmas decorations.

In the meantime, the established Anglican Church, invented by Henry VIII a century before, was keen to establish its own authority and to keep business ticking over. With more than a nod to the Catholic Church in Rome, Canterbury encouraged congregations to celebrate the holidays of the Christian calendar. The more radically protestant Puritans disapproved of such 'popery'. Of course, Londoners do like a bit of misrule, and Christmas returned as a legal holiday with accession of Charles II in 1660, but it remained rather disreputable. Its reinvention as a family festival would have to wait a century or two.

And just as the Church of England reinvented the liturgical year with its feast days and celebrations of the saints, so the Victorians reimagined Christmas as a medieval Merrie Engleland pageant. After the 18th century Enlightenment and the primacy of 'Reason' and 'Science', there was a yearning for a simpler and perhaps more mystical past. The architecture of the Victorians defines our city today – neo-Gothic churches (and the classic Victorian terraced house with its finials and sharply pitched roofs) sought the romance of an imagined medieval London.

Christmas gathered pace. The royal family brought trees into the home, and we all copied. Carols (many of them secular) joined hymns in church

services, and Christmas dinner got bigger than ever, with the ever-growing turkey, and the reinvention of Christmas cakes and puddings. Father Christmas and St Nicholas merged in one figure, who changed his signature garb from pagan-nature green to fiery red. In 1834, Christmas Day became a bank holiday in Britain. Boxing Day joined it in 1871. Sir Henry Cole produced the first Christmas cards in 1843. And, most famously, that arch-sentimentalist and romanticiser of London tradition, Charles Dickens, wrote A Christmas Carol, shifting Yule from a time for self-indulgence to one of charity and family connection.

In fact, as we contemplate a very different midwinter celebration, perhaps we should remember that this holiday of all the faiths (and none) is ever changing and – in many ways – all very recent. (Indeed, any Scottish readers may reflect that it wasn't until 1958 that Christmas Day was even a holiday north of the border). In 2020, Puritans and cavaliers may well argue about the wisdom and practicalities of lockdowns, tiers and keeping the family safe this festive season (even Oliver Cromwell kept the shops open), but once we've started spinning back towards the sun after December 21, we can perhaps start to pack up the toughest year in most of our memories, and look forward to a new beginning.



Pongal: The Hindu midwinter celebration



Stonehenge: The world's biggest winter solstice clock



Ramadan: Islam is unusual in that its liturgical month moves steadily backwards each year, based on the (more strictly accurate) lunar calendar



Hanukkah: Judaism, like practically every religious faith, has a midwinter celebration



KNOW YOUR COUNCIL

BETHNAL GREEN



Mohammed Ahab Hossain (LAB)

Tel: 07988 641407
Email: mohammed.hossain@towerhamlets.gov.uk



Sirajul Islam* (LAB)

Tel: 07931 708308
Email: sirajul.islam@towerhamlets.gov.uk
@CLlrSirajIslam



Eve Josephine McQuillan (LAB)

Tel: 07594 828420
Email: eve.mcquillan@towerhamlets.gov.uk

BLACKWALL & CUBITT TOWN



Ehtasham Haque (LAB)

Tel: 07943 999681
Email: ehtasham.haque@towerhamlets.gov.uk
@ehtashamulhaque



Mohammed Iqbal Morshed Pappu (LAB)

Tel: 07775 689621
Email: mohammed.pappu@towerhamlets.gov.uk



Candida Ronald* (LAB)

Tel: 07949 164104
Email: candida.ronald@towerhamlets.gov.uk

BOW EAST



Amina Ali* (LAB)

Tel: 020 7987 3014
Email: amina.ali@towerhamlets.gov.uk
@AminaAliLabour



Rachel Blake* (LAB)

Tel: 020 7364 1378
Email: rachel.blake@towerhamlets.gov.uk
@RNBlake



Marc Francis (LAB)

Tel: 07973 815 272
Email: marc.francis@towerhamlets.gov.uk

BOW WEST



Asma Begum* (LAB)

Tel: 07946 292712
Email: asmak.begum@towerhamlets.gov.uk
@ccllrasmaBegum



Val Whitehead (LAB)

Tel: 07879 616155
Email: val.whitehead@towerhamlets.gov.uk
@valjwhitehead

BROMLEY NORTH



Zenith Rahman (LAB)

Tel: 07961 865923
Email: zenith.rahman@towerhamlets.gov.uk



Dan Tomlinson (LAB)

Tel: 07501 461113
Email: dan.tomlinson@towerhamlets.gov.uk
@Dan_Bromley_N

MILE END



David Edgar* (LAB)

Tel: 07958314 844
Email: david.edgar@towerhamlets.gov.uk



Asma Islam (LAB)

Tel: 07538 325176
Email: asma.islam@towerhamlets.gov.uk
@THLP_ASMA



Puru Miah (LAB)

Tel: 07846 890823
Email: puru.miah@towerhamlets.gov.uk
@th_puru

POPLAR



Sufia Alam (LAB)

Tel: 07506 473136
Email: sufia.alam@towerhamlets.gov.uk
@SufiaAlam1

SHADWELL



Rabina Khan (LIB DEM)

Tel: 07944 790383
Email: rabina.khan@towerhamlets.gov.uk
@RabinaKhan



Mohammad Harun Miah (ASPIRE)

Tel: 07949 051295
Email: harunmiahcllr@outlook.com

SPITALFIELDS & BANGLATOWN



Shad Uddin Chowdhury (LAB)

Tel: 07737 337148
Email: shad.chowdhury@towerhamlets.gov.uk
@shadchowdhury2



Leema Omar Qureshi (LAB)

Tel: 07916 305953
Email: leema.qureshi@towerhamlets.gov.uk
@leemaqureshi

ST DUNSTAN'S



Dipav Das (LAB)

Tel: 07488 299131
Email: dipa.das@towerhamlets.gov.uk
@DipaDas01



Ayas Miah (LAB)

Tel: 07961 566066
Email: ayas.miah@towerhamlets.gov.uk
@ayasmiah3

RAL DEMOCRAT IN TOWER HAMLETS

Tower Hamlets Council has a system of governance in which the elected mayor, **John Biggs** (right), has personal responsibility and executive powers. Mayor Biggs is responsible for determining and delivering a wide range of policies and priorities. He is advised by his cabinet of councillors and by council officers.



* The members of the Cabinet are:

Cllr Sirajul Islam Deputy Mayor for Housing (Statutory Deputy Mayor)
Cllr Rachel Blake Deputy Mayor for Adults, Health & Wellbeing
Cllr Asma Begum Deputy Mayor for Community Safety, Youth and Equalities
Cllr Danny Hassell Children and Schools
Cllr Sabina Akhtar Culture, Arts & Brexit
Cllr Asma Islam Environment and Public Realm (job share)

Cllr Dan Tomlinson Environment and Public Realm (job share)
Cllr Mufeedah Bustin Planning and Social Inclusion (job share)
Cllr Eve McQuillan Planning and Social Inclusion (job share)
Cllr Candida Ronald Resources and the Voluntary Sector
Cllr Motin Uz-Zaman Work and Economic Growth

BROMLEY SOUTH



Danny Hassell*
(LAB)

Tel: 07807 732795
 Email: danny.hassell@towerhamlets.gov.uk
 @dannyhassell



Helal Uddin
(LAB)

Tel: 07939 998625
 Email: helal.uddin@towerhamlets.gov.uk

CANARY WHARF



Kyrsten Perry
(LAB)

Tel: 07977 049094
 Email: kyrsten.perry@towerhamlets.gov.uk



Andrew George Wood
(CON)*

Tel: 07710 486873
 Email: cllrandrewwood@gmail.com
 @Andrewwood17

* Independent Member of the Conservative Group

ISLAND GARDENS



Mufeedah Bustin
(LAB)

Tel: 07759 905377
 Email: mufeedah.bustin@towerhamlets.gov.uk
 @MufeedahB



Peter Golds
(CON)

Tel: 020 7364 4830
 Email: councillorpetergoldsg@gmail.com
 @going4goldsg

LANSBURY



Rajib Ahmed
(LAB)

Tel: 07958 740097
 Email: rajib.ahmed@towerhamlets.gov.uk



Kahar Chowdhury
(LAB)

Tel: 07732 686208
 Email: kahar.chowdhury@towerhamlets.gov.uk
 @KaharChowdhury



Bex White
(LAB)

Tel: 07434 989611
 Email: bex.white@towerhamlets.gov.uk
 @BexWhiteTH

LIMEHOUSE



James Robert Venables King
(LAB)

Tel: 07736 371160
 Email: james.king@towerhamlets.gov.uk
 @jrvking

ST KATHARINE'S & WAPPING



Denise Jones
(LAB)

Tel: 07494 494482
 Email: denise.jones@towerhamlets.gov.uk



Abdal Ullah
(LAB)

Tel: 07956 124264
 Email: abdal.ullah@towerhamlets.gov.uk
 @Abdalullah

ST PETER'S



Kevin Joseph Brady
(LAB)

Tel: 07943 159386
 Email: kevin.brady@towerhamlets.gov.uk
 @Kevin_J_Brady



Tarik Ahmed Khan
(LAB)

Tel: 07950 414218
 Email: tarik.khan@towerhamlets.gov.uk
 @Tarikahmedkhan



Gabriela Salva Macallan
(LAB)

Tel: 07528 807599
 Email: gabriela.salva-macallan@towerhamlets.gov.uk

STEPNEY GREEN



Sabina Akhtar
(LAB)

Tel: 07961 792965
 Email: sabina.akhtar@towerhamlets.gov.uk



Motin Uz-Zaman*
(LAB)

Tel: 07961 390709
 Email: motin.uz-zaman@towerhamlets.gov.uk
 @MotinZ

WEAVERS



Abdul Chunu Mukit MBE
(LAB)

Tel: 07985 124248
 Email: cllr.abdulc.mukit@towerhamlets.gov.uk



John Pierce
(LAB)

Tel: 07772 710080
 Email: john.pierce@towerhamlets.gov.uk

WHITECHAPEL



Faroque Mahfuz Ahmed
(LAB)

Tel: 07956 972328
 Email: faroque.ahmed@towerhamlets.gov.uk



Shah Suhel Ameen
(LAB)

Tel: 07930 364985
 Email: shah.ameen@towerhamlets.gov.uk
 @shahsuhelameen



Victoria Ngozi Obaze
(LAB)

Tel: 07405 661609
 Email: victoria.obaze@towerhamlets.gov.uk
 @victoria_obaze

First virtual election of the new Speaker

One of the council's most important annual events is the election of the new Speaker of the Council. The Speaker is responsible for important ceremonial duties and has a number of specific roles including chairing full council meetings and promoting and supporting the borough at civic engagements and events.

Supporting local schools, businesses, community organisations and charities is a major part of the Speaker's role. The Speaker also represents the Queen as First Citizen of the Borough, hosting events and welcoming visitors such as other royals and other VIPs.

Like many events affected by the Covid-19 pandemic, this year's election was postponed from the spring. It eventually took place at the end of September when at the first ever virtual full council meeting, Councillor Mohammed Ahbab Hossain was elected as the new Speaker of the Council.

Following his election, the new Speaker said: "I am so proud today. This is a very special moment for me, and I feel absolutely honoured and privileged." He also promised to carry out his duties and represent the people of Tower

Hamlets to the best of his abilities.

The Speaker has also announced the three charities he will be officially supporting throughout his civic term which are the Patchwork Foundation, Capital Kids Cricket and Soyten Sen School of Performing Arts. The chosen charities reflect the Speaker's ongoing support for local cultural, sports and youth organisations.

The challenges faced by the pandemic mean that the Speaker has taken part in a combination of virtual celebrations and discussions, as well as attending a small number of socially distanced events including the Annual Civic Service in Westminster Abbey with his civic colleagues from across London, and the two minutes' silence ceremony for Remembrance Day in the Town Hall.

He will continue to carry out his duties following safe social distancing practices and using technology to attend virtual events. If you would like to contact the Speaker or see if he is available to visit an event you are hosting, you can write to him at the Town Hall, Mulberry Place, 5 Clove Crescent, London, E14 2BG, email him at speaker@towerhamlets.gov.uk or call 020 7364 4883.



The new Speaker officially 'signs in' supported by Mayor John Biggs and Councillor Asma Islam.

"I am so proud today. This is a very special moment for me, and I feel absolutely honoured and privileged."

Have your say on BAME Inequalities Commission

Residents have until 15 January to share their ideas and lived experiences with the council's Black, Asian and Minority Ethnic Inequalities Commission.

The commission was set up in response to the killing of George Floyd and the Black Lives Matter demonstrations that took place across the world, including here in Tower Hamlets.

It is being chaired by Councillor Asma Begum, Deputy Mayor for Community Safety, Youth and Equalities and supported by a number of specialist and key partner Commissioners.

The commission's work began in September and has been focusing on the four main areas of community leadership, health inequalities, education

and employment. There has been a series of broadcasted public meetings that have heard from expert witnesses from the areas of focus.

Councillor Begum said: "I'm so grateful to all those who have shared their ideas and sometimes painful experiences with the commission, which is giving us an invaluable opportunity to

bring about real and lasting change."

You can share your ideas and lived experiences until 5pm on Friday 15 January 2021 at talk.towerhamlets.gov.uk/raceinequalitiescommission, the council's dedicated consultation hub. You can keep up to date at www.towerhamlets.gov.uk/raceinequalitiescommission

Meetings

All meetings will be virtual. Dates and times may change. Agendas will be available online. For further information visit www.towerhamlets.gov.uk/meetings

Overview and Scrutiny Committee
Monday 14 December, 6.30pm

Children and Education Scrutiny Sub-Committee
Tuesday 15 December, 5.30pm

Cabinet
Wednesday 16 December, 5.30pm

Licensing Committee
Thursday 17 December, 5.30pm

Overview and Scrutiny Committee (budget meeting)
Monday 11 January, 6.30pm

Licensing Sub-Committee
Tuesday 12 January, 5.30pm

Grants Determination Sub-Committee
Wednesday 13 January
5.30pm

Development Committee
Thursday 14 January, 6pm

Strategic Development Committee
Tuesday 19 January, 6pm

Council
Wednesday 20 January, 7pm

Overview and Scrutiny Committee
Monday 25 January, 6.30pm

Licensing Sub-Committee
Tuesday 26 January, 5.30pm

Cabinet
Wednesday 27 January, 5.30pm

Audit Committee
Thursday 28 January, 5.30pm

Overview and Scrutiny Committee (provisional budget meeting)
Monday 1 February, 6.30pm

Licensing Sub-Committee
Tuesday 2 February, 5.30pm

Standards (Advisory) Committee
Thursday 4 February, 6pm

Strategic Development Committee
Monday 8 February, 6pm

Health and Adults Scrutiny Sub-Committee
Monday 8 February, 6.30pm

Children and Education Scrutiny Sub-Committee
Tuesday 9 February, 5.30pm

Housing and Regeneration Scrutiny Sub-Committee
Wednesday 10 February, 6.30pm

Development Committee
Thursday 11 February, 6pm

General Purposes Committee
Tuesday 23 February, 5.30pm

Licensing Sub-Committee
Tuesday 23 February, 5.30pm

Council
Wednesday 24 February, 7pm



[/towerhamletscouncil](https://www.facebook.com/towerhamletscouncil)



[@towerhamletsnow](https://twitter.com/towerhamletsnow)



www.towerhamlets.gov.uk/signup

USEFUL INFORMATION SERVICES AND CONTACTS

Council

Town Hall

Mulberry Place,
5 Clove Crescent, E14 2BG.
www.towerhamlets.gov.uk
General enquiries
020 7364 5000

Covid-19 advice and support: 020 7364 3030

Housing

Repairs

0800 376 1637 ext 1

Housing advice

020 7364 3558

Homeless service

020 7364 7474

Out of hours
020 7364 4079

Choice-based lettings

020 7364 2826

Homeseekers

www.thhs.org.uk

Tower Hamlets Homes

020 7364 5015

Report it

Non-emergency crimes

101 Textphone

18001 101

Domestic Violence Team

0800 279 5434

Haven Whitechapel (sexual assault referral centre)

020 3299 6900 /

020 3299 1599

Karma Nirvana (honour- based abuse helpline)

0800 5999 247

National LGBT domestic abuse helpline (Galop)

0800 999 5428 /

0300 999 5428

Black Women's Health and Family Support

020 8980 3503

Rights of Women

020 7251 6577

Victim Support Tower Hamlets

0808 168 9291 /

0808 168 9111

NSPCC Child Protection Helpline

0800 800 5000

Childline

0800 1111

Shelter

0808 800 4444

Respect (for perpetrators)

0808 802 4040

Men's Advice Helpline

0808 8010 327

Samaritans

116 123

Tower Hamlets Mediation Service (free service for council tenants and leaseholders)

020 7364 7474

Anti-fraud (housing and tenancy related fraud)

0800 528 0294

Idea Stores and libraries

Bow

Gladstone Place, E3.

Canary Wharf

Churchill Place, E14.

Chrisp Street

Vesey Path, E14.

Whitechapel

321 Whitechapel Road, E1.

Opening times:

We are operating reduced
hours as a result of the
pandemic.

Mon to Fri, 10am - 6pm;
Sat and Sun, 12 noon - 4pm.
ideastore@towerhamlets.gov.uk

www.ideastore.co.uk

To book a computer slot
or study space, call 020
7364 and add the following
numbers for Canary
Wharf 0234; Bow 0237;
Chrisp Street 0238; and
Whitechapel 0236
Books, magazines,
newspapers, music and
films are available for
download for online Idea
Store members. Join for free
www.ideastore.co.uk/home

Tower Hamlets Local
History Library and
Archives will be open on
Tue to Fri for pre-booked
visitors only, until Fri 18
Dec and will be closed over
Christmas.
Visit www.ideastore.co.uk/local-history

All other Idea Stores and
libraries remain closed.

Local History Library and Archives

localhistory@towerhamlets.gov.uk

Careers

Young WorkPath/Tower Hamlets Careers Service

40-42 Watney Market, E1.

020 7364 1401

youngworkpath@towerhamlets.gov.uk

Adult education services

Shadwell Centre,

455 The Highway, E1.

020 7364 5665

WorkPath

Employment and

Skills Centre,

55 Upper Bank Street, E14.

020 7364 3727

workpath@towerhamlets.gov.uk

gov.uk

Debt

Toynbee Hall Advice Service

28 Commercial Street, E1.

020 7392 2953

advice@toynbeehall.org.uk

www.toynbeehall.org.uk

Fair Money Advice

18 Ashwin Street, E8.

020 3475 8811

www.fairfinance.org.uk

Island Advice Centre

Island House, Roserton

Street Isle of Dogs, E14.

020 7987 9379

www.island-advice.org.uk

Health & wellbeing

Health hotline

020 7364 5016

Reset

Tower Hamlets Drug and
Alcohol Service

183 Whitechapel Road, E1.
020 3889 9510

reset.towerhamlets@cgl.org.uk

Safe East (under-19s)

compass.towerhamlets@yphws.nhs.net

020 3954 0091

East London Parkinson's Support Group

hello@parkinsons.org.uk

0808 800 0303

Alzheimer's Society

Robinson Centre, Mile End

Hospital, Bancroft Road, E1.

020 8121 5626

Tower Hamlets Advocacy Real

020 7001 2170

hello@real.org.uk

Free home fire safety advice

08000 284428

LinkAge Plus

Toynbee Hall, Commercial

Street, E1.

020 7392 2914

Stop Smoking services

www.quitrightth.org

020 7882 8230

Healthwatch Tower Hamlets

Mile End Hospital, Bancroft
Road, E1.

0800 145 5343

info@healthwatchtowerhamlets.co.uk

www.healthwatchtowerhamlets.co.uk

www.healthwatchtowerhamlets.co.uk

BYM Bangladesh Youth Movement Women's Centre of Excellence

Whitechapel Centre, Units 1

& 2, Myrdle Street, E1.

020 7377 8668

www.bym.org.uk

Advice

Account 3 (welfare and debt advice)

3 Birkbeck Street, E2.

020 7739 7720

www.account3.org.uk

Bangladesh Youth Movement

21-23 Henriques St, E1.

020 7488 1831/2

admin@bym.org.uk

www.bym.org.uk

Bromley by Bow Centre

St Leonard's Street, E3.

020 8709 9700

Citizens Advice Bureau

32 Greatorex Street, E1.

020 7247 1050

towerhamlets@eastendcab.org.uk

org.uk

www.eastendcab.org.uk

Island Advice Centre

Island House, Roserton

Street, Isle of Dogs, E14.

020 7987 9379

www.island-advice.org.uk

Legal Advice Centre

University House,

104 Roman Road, E2.

020 8980 4205

www.legaladvicecentre.london

Limehouse Project

789 Commercial Road, Unit

2, St Anne Street, E14.

020 7538 0075

www.limehouseproject.org.uk

Praxis (New Residents)

Immigration, benefits and

general advice

Pott Street, E2.

General Helpline:

020 7729 7985

Immigration advice:

020 7749 7608

www.praxis.org.uk

Tower Hamlets Community Advice Network

thcan@island-advice.org.uk

www.thcan.org.uk

Tower Hamlets Law Centre

Unit 1, St Anne's Street, E14.

020 7538 4909

www.thlc.co.uk

Age UK East London

82 Russia Lane, E2.

Caxton Hall, Caxton Grove,

E3.

Royal London Hospital 14F

Wards.

info@ageukeastlondon.org.uk

org.uk

www.ageuk.org.uk/eastlondon

020 8981 7124

Leisure centres

John Orwell Sports Centre

Tench Street, Wapping, E1.

020 7488 9421

Mile End Park Leisure Centre and Stadium

190 Burdett Road, E3.

020 8709 4420

Poplar Baths

170 East India Dock Road,

E14. 020 3795 0599

Whitechapel Sports Centre

55 Durward Street, E1.

020 7247 7538

York Hall Leisure Centre

5-15 Old Ford Road, E2.

020 8980 2243

Currently closed:

St George's Leisure Centre

Tiller Leisure Centre

Parent & child

Family Information Service

30 Greatorex Street, E1.

fis@towerhamlets.gov.uk

020 7364 6495

Multi-Agency Safeguarding Hub (MASH)

If a child is at risk of harm:

020 7364 5006 (option 3,

open Mon to Fri, 9am - 5pm)

020 7364 4079 (out of

hours emergency duty

team)

Tower Hamlets National Childbirth Trust

0300 330 0700

www.nct.org.uk

Check before
you visit

Due to the pandemic,
some services
remain closed or may
be operating with
reduced hours or by
appointment only.

Landlords...

Top rents achieved

3 months paid in advance

FREE PROPERTY LICENCE

Hassle-Free Letting

Rent your property today!

- ✓ FREE NIC
- ✓ FREE EPC
- ✓ FREE inventory
- ✓ FREE gas safety check
- ✓ Families waiting



* Terms & conditions apply

Find out more →



WE URGENTLY REQUIRE PROPERTIES ACROSS LONDON & ESSEX AREAS



elliotleigh

020 8983 4444

Visit our website for more information www.elliotleigh.com