

**COST OF LIVING**



**£6m in support and warm hubs to re-open this winter**

SEE PAGE 7

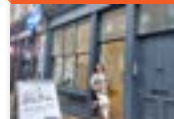
**COUNCIL NEWS**



**Could you foster and change the life of a young person?**

SEE PAGE 27

**BUSINESS AND JOBS**



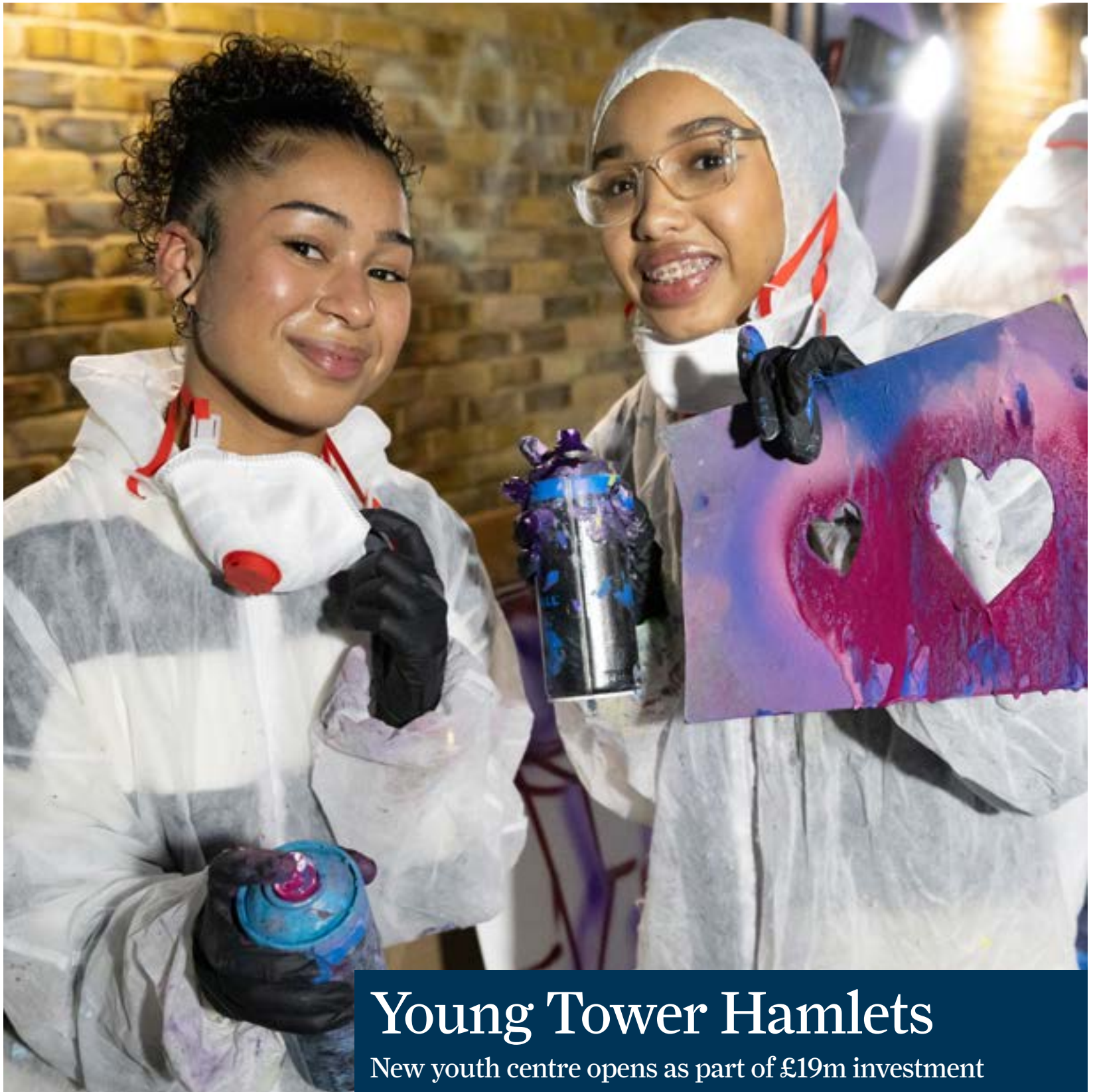
**Support your local restaurants and shops**

SEE PAGE 9

ISSUE THIRTY-ONE // DECEMBER 2023



# YOU'RE EAST END



## Young Tower Hamlets

New youth centre opens as part of £19m investment





New City College  
Tower Hamlets



New City College  
Attlee A Level Academy

# Stand Tall. Stand Out.

↪ Our academic success rate is  
6% above the national average



You are more likely to achieve English and  
Maths GCSE with us than at other colleges.

[www.ncclondon.ac.uk](http://www.ncclondon.ac.uk)



Apply now





Judges saw colourful blooms across Tower Hamlets

# Tower Hamlets scoops Britain in Bloom award

## CELEBRATING OUR BOROUGH

Gardeners and growers across the borough, along with the council's parks teams, have been celebrating after scooping awards at the London in Bloom and Britain in Bloom awards.

In October, Tower Hamlets was recognised with a 'Silver Gilt' award in the 'City' category of the Royal Horticultural Society's Britain in Bloom competition, the UK's biggest community gardening competition.

Forty-four community gardening groups were nominated to represent their region or nation in the UK Finals 2023. Tower Hamlets was also recognised for 'Innovation in Community Engagement', as well as picking up an award for 'Sustainable Gardening'.

In September, Tower Hamlets received eight 'Gold' awards and

won four overall categories at the London in Bloom Awards hosted at the Arts Pavilion, Mile End Park.

The borough scooped 'Gold' awards in the Town and City Centre, Large Conservation, Heritage Park/Garden, Business Landscape, and

Large Cemetery categories of the awards.

Following this year's success, the council will be celebrating local gardeners and growers at a ceremony at The Art Pavilion, Mile End Park on 13 December.



Rachel de Thame, gardener and broadcaster, presenting the Britain in Bloom award to Speaker of the Council, Cllr Jahed Choudhury (left), and Cllr Iqbal Hossain, Cabinet Member for Culture and Recreation

## A message from your Mayor

As we enter the last month of the year, we have an opportunity to look back at some of our achievements over the past few months,



as well as to look ahead to 2024. In September, Tower Hamlets became the only council in the country to provide free school meals to children up to the age of 16. In November, Tower Hamlets Homes seamlessly came back in-house and is once again managed by the council.

We've also been working hard to help tackle violence against women and girls, including supporting White Ribbon Day. We ran a '16 Days of Activism' programme, and also launched #DontCrossTheLine - a joint campaign with Hackney and the City of London to combat sexual harassment of women.

As the cold weather sets in, we're once again encouraging all those eligible to get their flu and Covid jabs, and, to help with the cost of living, there's the £5.9m Household Support Fund which will provide a boost to many in our borough.

We're also supporting local businesses over Small Business Saturday, and have relaunched our Shop Local campaign, encouraging everyone to support local Tower Hamlets businesses, particularly during the upcoming festive period.

And there's more to look forward to next year as we continue to provide the homes people need and deserve, work to improve our waste and cleanliness services, highlight the dangers of charging e-bikes at home, and bring our leisure centres back in-house.

But for now, I'd like to wish everyone celebrating a happy Christmas and a great start to 2024.

**Lutfur Rahman**  
Executive Mayor

Our East End is produced by:  
Tower Hamlets Council

Editorial enquiries: 020 7364 4389

Email: [communications@towerhamlets.gov.uk](mailto:communications@towerhamlets.gov.uk)

Advertising enquiries: 020 7364 6005

Printed by: Reach Printing Services

Distributed by: London Letterbox Marketing

## Sign-up to Tower Hamlets news

Find out what's on, get Tower Hamlets news, take part in competitions and receive local offers straight into your inbox!

Visit [www.towerhamlets.gov.uk/signup](http://www.towerhamlets.gov.uk/signup)



Facebook

[/Towerhamletscouncil](https://www.facebook.com/Towerhamletscouncil)



Twitter

[@TowerHamletsNow](https://twitter.com/TowerHamletsNow)



Instagram

[@TowerHamletsNow](https://www.instagram.com/TowerHamletsNow)



# New youth centre opens

## ACCELERATE EDUCATION

A new youth centre has opened as part of Tower Hamlets Council's commitment to provide a safe space for young people in every ward in the borough.

On the day of the launch, young people were encouraged to get involved in a range of free activities, including a Diwali arts session, cake decorating, graffiti showcase, a PS5 science game, and podcasting session, and to have their say on the council's youth offer.

The opening of the new centre, in Columbia Road, coincided with National Youth Week in November, and was celebrated with free activities and sessions for young people across the borough.

Cllr Maium Talukdar, Deputy Mayor and Cabinet Member for Education, Youth and Lifelong Learning, said: "I was proud to attend the launch of the Columbia Road youth centre to see that we are fulfilling our commitment as a council to offer a safe space for young people in every ward.

"It was great to be able to talk with young people on the day to hear their views, as they are playing an integral part of redesigning our youth service, Young Tower Hamlets."

The council has expanded and rebranded its youth service offering in the borough as part of a £19m investment in young people.



There were lots of free activities for young people during National Youth Week





# Christmas card winner picked

## CELEBRATING OUR BOROUGH

Council leaders have chosen their designs for this year's corporate Christmas cards.

More than 90 entries to the council's annual Christmas card competition were sent in by children up to the age of 11.

Drawings included festive gingerbread men, snowmen, Christmas trees, Tower Hamlets' landmarks in the snow, and even a picture of Santa crossing the skies above the town hall in Whitechapel on his sleigh.

A design by seven-year-old Bluegate Fields Primary School pupil Inaaya, will feature on the Executive Mayor's cards.

Senior managers at the council chose other designs for their cards.



More than 90 cards were sent in from children aged up to 11 from across the borough

# Celebrating Black History month



Windrush 75 was a key theme of this year's Black History Month

More than 80 free events including film, workshops, music, drama, dance, walks and exhibitions took place across Tower Hamlets to showcase the contributions made by those of African and Caribbean descent to British society as part of Black History Month in October.

Events focused on this year's key themes of Windrush 75 and Celebrating our Sisters.

The Living Legacies 75 Years On project and exhibition looked at connections around the impacts and experiences of migration. It documented and explored the stories of individuals from first and second generations and highlighted the continuation of the legacies of those before us.

# Time to nominate your civic heroes

Nominations are now open for the Civic Awards which honour those who dedicate their time to improve the lives of people across the borough.

- You can nominate someone who:
- gives outstanding service to the community
  - has brought credit to the borough through sporting, artistic or cultural achievements
  - has improved the quality of life for local people by providing

services beyond what they are paid to do

- has benefited the community through success in business and in community involvement
- is a young achiever under 25 years old whose accomplishments are extraordinary and should be recognised.

Nominees must live, work or study in the borough to qualify.

The winners will be chosen by a cross-party panel, chaired by



The winners of the awards in 2023

the Speaker of the Council and include representatives from the community.

- Submit your nominations at [www.towerhamlets.gov.uk/civicawards](http://www.towerhamlets.gov.uk/civicawards) by 21 January 2024.





We can all help stop others feeling lonely and isolated by doing simple things like saying 'hello'

## Just Say 'Hello' and support your community

Having a chat with an old friend or checking in on your elderly neighbour can make a big difference to their wellbeing.

Even the smallest gesture can create a meaningful connection for someone, especially if they're feeling lonely or isolated.

Just Say Hello is a new local campaign about encouraging conversations and connecting with one other, by taking time out to say

'hello.'

Partners, organisations or members of the community across Tower Hamlets are being invited to use the Just Say Hello resources in their own way.

Whether it's attending an event at a local community centre, hosting a 'pop up' coffee shop with your neighbours or dropping into a new class, there are many ways to make new connections.

For more information visit: [www.towerhamletsconnect.org/just-say-hello](http://www.towerhamletsconnect.org/just-say-hello)

If you are feeling isolated and in need of mental health support, there are local services that can support you:

Tower Hamlets Talking Therapies provides a range of psychological therapies and counselling services. Call 020 8475 8080.

Mind in Tower Hamlets provides

advice and support, as well as free counselling for residents. Call 020 7510 4247/4248.

If you are feeling overwhelmed or struggling with your mental health, you can call the Tower Hamlets Mental Health Crisis Support number for free 24/7 on 0800 073 0003.

• Visit [www.towerhamlets.gov.uk/mentalhealth](http://www.towerhamlets.gov.uk/mentalhealth) for more information

## Support to keep well in winter

### HEALTHIER LIVES

With the winter months upon us, it means looking after ourselves that extra bit more, as well as our neighbours.

#### Keeping well

Keeping warm and well over the winter can help to prevent colds, Covid-19, flu and more serious health problems.

Ensuring you're accessing the right care at the right time also helps take the pressure off emergency services.

If you need urgent medical help,

but it is not life-threatening, visit [111.nhs.uk](http://111.nhs.uk) or call 111.

Urgent doctor's appointments are available seven days a week including in the evenings, weekends and on bank holidays. Call your GP practice or NHS 111 to book. Your local pharmacist can offer advice as well as medication.

Many pharmacies are open late and over the weekends and you do not need an appointment to see a professional. Some offer free delivery services, so check with your local pharmacy.

#### Stay warm

Be sure to keep your home warm,

as well as yourself, by staying active and eating several hot meals and drinks throughout the day. If you are struggling to heat your home, there are a number of warm hubs at Idea Stores and community centres with some offering hot drinks and wifi.

Visit [www.towerhamlets.gov.uk/costofliving](http://www.towerhamlets.gov.uk/costofliving)

#### Eat well

If you are struggling to get food for yourself or your family there are a number of food aid organisations in Tower Hamlets that can help. The Community Cupboard will be stocked with a selection of essentials, personal hygiene items, nappies,

and baby wipes. Staff at our Children and Family Centres will be able to provide assistance to those individuals and families in need of support.

To find out more visit: [www.towerhamlets.gov.uk/foodbanks](http://www.towerhamlets.gov.uk/foodbanks)

#### Get vaccinated

Get your flu and Covid-19 vaccines ahead of winter. Both are free if you are aged 65 and over, are pregnant or have a long-term health condition. Speak to your GP.

For more tips visit: [www.towerhamlets.gov.uk/keepwellinwinter](http://www.towerhamlets.gov.uk/keepwellinwinter)



# Warm hubs return to help you through the cold winter

## COST OF LIVING

The council's warm hubs scheme will return this winter to give residents a helping hand.

The warm hubs will be based at our Idea Stores and Cubitt Town and Bethnal Green libraries.

Last year, more than 22,000 visits were recorded at our six warm hubs where staff served up hundreds of cups of tea, coffee, and healthy snacks daily.

Warm hubs have been used by councils across the UK to help those impacted by the rising cost

of living to access warm, safe and comfortable environments during periods of extreme cold weather.

There will also be volunteers at the warm hubs to give advice and signpost residents to services.

Warm hubs at Idea Stores Bow, Chrisp Street, Watney Market and Whitechapel are open 10am to 12noon and 4pm to 5pm Monday to Saturday. Warm Hubs at Cubitt Town and Bethnal Green libraries are open Monday to Thursday and Saturdays from 10.30am to 12.30pm and 4pm to 5pm.

• Visit [towerhamlets.gov.uk/warmhubs](https://towerhamlets.gov.uk/warmhubs)



More than 22,000 visits were recorded to our warm hubs last year

## £6million package of support



The Household Support Fund helps households most in need with the rising cost of living

A support package worth nearly £6million will help residents in Tower Hamlets impacted by the cost-of-living crisis.

The Government has allocated £5.9million to extend the Department for Work and Pensions' Household Support Fund until March 2024.

The Household Support Fund helps households most in need with the rising cost of living, including families, pensioners, unpaid carers, care leavers and disabled people.

As part of this, Tower Hamlets Council has earmarked £160,000 for projects to support babies and families in need with household essentials.

Community Cupboard is a new project which sees a selection of essentials, personal hygiene items, nappies and baby wipes given out by staff at our Children and Family Centres for free to those who have been referred to the scheme.

Funds have also been ringfenced for households with benefits-related eligibility for Free School Meals, vulnerable adults, low-income pensioners, as well as other residents in need.

• Visit [towerhamlets.gov.uk/costofliving](https://towerhamlets.gov.uk/costofliving) for more information, if you are struggling with the cost of living this winter. You can also use our benefits checker at [towerhamlets.gov.uk/benefits](https://towerhamlets.gov.uk/benefits) to make sure you are getting all the benefits you are entitled to.



# Creative industries on the increase



Businesses are also offered training and hold community events

The number of people working in the creative industries in Hackney Wick and Fish Island has increased by more than 60 per cent since a new Creative Enterprise Zone was established, according to a new report.

The zone is part of a Mayor of London initiative to help artists and creative businesses start-up and grow in designated areas across London, with support provided for permanent affordable space and boosting employment in the creative industries.

The zone, established in 2018, also delivers training and community events to upskill those in the creative industries.

- For more information, visit [www.hwfi.zone](http://www.hwfi.zone)

## Hundreds attend jobs fair

### BUSINESSES AND JOBS

An employability and jobs fair saw 825 residents meet with 47 employers and training providers.

The council's employment service, WorkPath, organised the event which was the first of its kind to be held at the new Town Hall in Whitechapel.

There were 200 live vacancies available on the day and more than 55 interviews have been offered and 59 residents have enrolled on to training courses with local providers so far. The interviews were with a range of employers including JD Sports, Whitechapel Gallery, Nike and Berkeley.

Attendees had the chance to explore live vacancies, apprenticeships, and

training opportunities, along with free courses to upskill and retain.

Cllr Abdul Wahid, Cabinet Member for Jobs, Skills and Growth, pictured, opened the event. He said: "It was a brilliant event, made possible by officers from WorkPath and our employer partners who are dedicated to offering opportunities to local people."

Jack Wellens, Youth Development

Lead, The Prince's Trust, said: "The event was very worthwhile for us as an organisation. I met many motivated and passionate young people."

WorkPath is an employment service offering support and advice to help you reach your full potential.

- Register [www.towerhamlets.gov.uk/Workpath](http://www.towerhamlets.gov.uk/Workpath)



More than 55 interviews were offered during the event from firms such as JD Sports and Whitechapel Gallery





Lia Davitaia Walsh in her new Georgian restaurant in Brick Lane

# Shop local this Christmas

Residents are being encouraged to shop local this Christmas and New Year to help support local businesses in their area.

Shop Local is a campaign aimed at encouraging everyone to support their local shops and bring benefits to the whole community.

Tower Hamlets has a vibrant mix of independent shops, traders, cafes and restaurants, including Rafaela Mendes, a partner at designer shoe shop Mafalda Handmade, who opened her store in Cheshire Street, E2, in June last year.

She said: Cheshire Street is a fabulous hub of independent shops.

"They are full of character and we are able to provide a really intimate setting here.

"It's a lively area with an incredibly creative vibe.

"Shopping local is more environmentally friendly and helps us all cut down our carbon footprint.

"It also helps create a sense of community and the more we have that, the better our neighbourhood will be.

"Shopping local means giving local businesses an opportunity and encourages others to open, making the neighbourhood more sustainable and interesting."

And it isn't just local shops residents can support - we have an abundance of independent restaurants too.

Lia Davitaia Walsh opened Georgian restaurant Aba Ra in Brick Lane in October.

She said: "A restaurant dedicated to showcasing the gastronomic and oenological greasers of Georgia, the recognised birthplace of wine, has always been our lifelong dream.

"Nestled in the vibrant enclave of Brick Lane, a nexus of art, vintage allure, and diverse culinary offerings, our venture aligns seamlessly with the ethos of this esteemed London district.

"Embraced by the support of fellow Brick Lane establishments, we recognised the intrinsic value of local patronage in the early stages of our enterprise.

"Our commitment to fostering a sense of community echoes the cultural importance we attribute to the concept of neighbourhood, a cornerstone from our Georgian roots that we aim to cultivate here.

"In essence, our aspiration is a seamless integration into the local tapestry, much like the welcoming embrace we have received in our cherished homeland."



Rafaela Mendes, from Mafalda Handmade, encourages everyone to shop local



# Council now manages and maintains council houses

## HOMES FOR THE FUTURE

On 1 November, Tower Hamlets Council became responsible for managing and maintaining all council homes, which was previously managed by Tower Hamlets Homes (THH).

This includes repairs, maintenance, improvements, caretaking, gardening, and rent

and service charge collections.

The council and THH worked closely to ensure a seamless transition for tenants and leaseholders.

There are no changes to the way residents contact housing management services and you can continue to use the same phone number, email addresses and online services.

The only change is to the name of

the online portal from MyTHH to now being called MyHome.

There are a number of aims of bringing the housing service back in-house, which include:

- joining-up housing and other council services to make it easier for residents to get the help they need
- giving residents a strong voice into the council and improving standards

- ensuring the council is closer to critical issues such as fire and building safety
- providing services for the best value.

More than 86 per cent of council tenants and leaseholders who took part in a consultation agreed that housing management services should be brought back in-house under the direct control of the council.

## Join Tenants' Voice and share your views

Council tenants and leaseholders are invited to join a new Tenants' Voice group to help shape the future of housing management

services provided by Tower Hamlets Council.

Tenants' Voice gives you the opportunity to shape, influence and

steer the services that matter most to you, your neighbours and your council home.

- If you want to join Tenants' Voice

or for more information, please email [talk.housingmanagement@towerhamlets.gov.uk](mailto:talk.housingmanagement@towerhamlets.gov.uk) by 15 January 2024.



Tower Hamlets Council is now responsible for managing and maintaining all council homes





The development continues the tradition of naming buildings on this estate from the Battle of Trafalgar

# Community hall and 53 new homes are officially opened

A new development of 53 new homes with environmentally friendly features, community hall and play area has been officially opened.

Barnsley Street, adjacent to Orion House on the Collingwood Estate, comprises three blocks of flats, including five accessible homes.

The development continues the tradition of naming buildings on this estate from the Battle of Trafalgar, with Moorsom House named after Admiral Robert Moorsom, a captain of one of Admiral Collingwood's ships during the battle, Pitt House named after the then Prime Minister

William Pitt the Younger, and Francois House, named after John Francois, a black sailor who served on HMS Victory during the battle.

Lutfur Rahman, Executive Mayor of Tower Hamlets, pictured centre above, who officially opened the new development, said: "We are facing a housing crisis in London, but we are determined to buck this trend by building more affordable housing for our residents."

"We have made a commitment to build 4,000 genuinely affordable homes in four years and this is another step towards us achieving

that target.

"I was very pleased with the new development, which includes a community hall for residents to use and a play area.

"It also includes solar panels, bike parking and electric vehicle charging which demonstrates our commitment to ensuring our ambitious building targets will not be detrimental to our environment."

The Mayor was joined at the opening by the Collingwood Estate Committee, Tower Hamlets Homes officers and a number of Tower Hamlets councillors, including Cllr

Kabir Ahmed, Cabinet Member for Regeneration, Inclusive Development and Housebuilding.



**We are facing a housing crisis in London, but we are determined to buck this trend**

## £1m claimed back for residents from landlords

Residents who lived in unlicensed rental properties have been helped to claim back more than £1m in rent.

The council was able to help 299 renters claim back £1,043,047 in rent repayment orders, and they have been grateful for the assistance.

Renter Liam Clark, who received his first payment of £4,700 in RRO, said: "I would like to thank the council for its stellar professionalism and exemplary persistence on our application."

"It fills me with optimism to see our public services performing so well and I am personally inspired

by your commitment to building a better future for the housing market by keeping it fair and accountable."

Another renter, Simon, said: "I would like to thank the council for all the work it did for us. It really made a difference for us."

The news comes as Cabinet approved plans to improve conditions in houses of multiple occupation (HMOs), including tackling overcrowding, damp and mould, by renewing an additional HMO licensing scheme for properties in the borough, and extending it to Weavers, Whitechapel, Spitalfields

and Banglatown.

After being approved on 25 October, these new rules will come into force on 1 April 2024 for five years.

Tower Hamlets Council's Environmental Health and Trading Standards Team has been cracking down on landlords who rent their properties without a licence and forcing the landlords to pay back rent through rent repayment orders.

Cllr Kabir Hussain, Cabinet Member for the Environment and the Climate Emergency, said: "Not having an HMO licence means

that the renters are not guaranteed the minimum-sized living space, fire safety regulations may not be followed, and waste may not be disposed of properly.

"Not only is this dangerous for residents, it is also unethical and unfair.

"This is why the council has taken a tough stance on this issue and will continue to hold landlords who do not have appropriate licences to account."

• For more information about HMOs visit [www.towerhamlets.gov.uk/HMOLicensing](http://www.towerhamlets.gov.uk/HMOLicensing)





The Heritage Community Moorings with the solar panels funded by the grants programme

# £316k to tackle climate change

## CLEAN AND GREEN

Sixteen local organisations have been awarded £316,000 to take action on the climate emergency through round two of the Carbon Reduction Community Grants Programme.

The organisations will be rolling out projects that aim to decrease their carbon emissions and improve educational awareness around the climate emergency.

The successful projects include the installation of LED lighting, solar panels, air source heat pumps, insulation, draught proofing and

more efficient heating systems.

There are also five educational projects that will engage with communities across the borough on the climate emergency and will include workshops, seminars, roundtables, plays, exhibitions and community days.

The Carbon Reduction Community Grants programme supports local community groups, charities, and community interest companies to cut their carbon emissions.

The grants make up part of a larger £700,000 package which responds to the climate emergency locally by funding carbon reduction

projects for 36 local organisations.

In the first round, approximately £200,000 was awarded to 11 organisations for projects dedicated to reducing their carbon emissions and making their organisations more sustainable.

Hermitage Community Moorings was one of the organisations that benefited from the first round of funding, which allowed them to install solar panels on their mooring site.

Jess Lerche, co-chair of Hermitage Community Moorings, said: "Our 54-panel array was switched on just last week and our moorings community are

planning a 'solar'bration party to celebrate. It is something we have wanted to do since we were founded fourteen years ago, and the grant made it possible.

"The sustainability team at Tower Hamlets were behind us all the way and it's a major step in our quest to become the greenest mooring on the Thames."

For more information on the Carbon Reduction Community Grants Programme, please visit our website.

• **If you have any questions about the programme or would like more information, please email: [THEnergy@towerhamlets.gov.uk](mailto:THEnergy@towerhamlets.gov.uk)**

## Be green this New Year and recycle

The festive season is nearly upon us and we want to help you enjoy the festive period and welcome the New Year in a greener way.

Remember to make space for others using the communal bins by flattening your cardboard boxes before putting them in the recycling bin.

Always rinse your containers before putting them in the recycling bin.

Aerosols can be recycled in our borough so your hairspray or deodorant can go in the recycling bin when it's empty.

Knowing which plastics to put in the recycling bin can be tricky, but essentially trays, tubs, pots, and bottles can all be recycled. Please put polystyrene, plastic film, nappies, and crisp bags in the waste bin as they cannot be recycled.

If you live in a kerbside property and are eligible for food waste collections, please order a food waste caddy ahead of the holidays by calling 020 7364 5004.

• **Visit [www.towerhamlets.gov.uk/LetsRethinkIt](http://www.towerhamlets.gov.uk/LetsRethinkIt) for more information. See your collection dates on the advert opposite.**

## Free Christmas tree collection returns

You can recycle your Christmas tree for free this year thanks to Tower Hamlets Council.

Collections of Christmas trees will be taking place between Monday 8 January to Friday 19 January 2024.

The council will take the trees to the same facilities that process our garden waste.

After being collected, the trees will be turned into nutrient-rich compost to help grow more plants and vegetables.

Make sure you remove all decorations from the tree and pots

and soil before bringing it outside to be recycled.

If you live in a block of flats, please contact your property landlord or management company which can arrange collections from the nominated communal collection points.

If you currently receive a kerbside food and garden waste collection, please leave the tree out for collection on your scheduled day during this period and it will be collected by the council's teams.

• **Visit [towerhamlets.gov.uk/recycling](http://towerhamlets.gov.uk/recycling) for more information.**



# Residential waste, recycling, and commercial waste collections Christmas and New Year 2023/2024

Over the bank holiday period there will be changes to your normal rubbish, recycling, food and garden waste collection arrangements.

All weekday collections will be one day behind our normal schedule for this period. For example, if you have collections normally on a Monday, they will be on a Tuesday. If your collection is on a weekday (Monday-Friday), please put your waste out the day after you usually have collections.

Sunday 24th December	Normal service	
<b>Monday 25th December – Christmas Day</b>	<b>No service</b>	<b>Monday collections on Tuesday 26th December</b>
Tuesday 26th December – Boxing Day	Service (one day behind normal schedule)	Tuesday collections on Wednesday 27th December
Wednesday 27th December	Service (one day behind normal schedule)	Wednesday collections on Thursday 28th December
Thursday 28th December	Service (one day behind normal schedule)	Thursday collections on Friday 29th December
Friday 29th December	Service (one day behind normal schedule)	Friday collections on Saturday 30th December
Saturday 30th December	Normal service and Friday collections service	
Sunday 31st December	Normal service	
<b>Monday 1st January – New Year's Day</b>	<b>No service</b>	<b>Monday collections on Tuesday 2nd January</b>
Tuesday 2nd January	Service (one day behind normal schedule)	Tuesday collections on Wednesday 3rd January
Wednesday 3rd January	Service (one day behind normal schedule)	Wednesday collections on Thursday 4th January
Thursday 4th January	Service (one day behind normal schedule)	Thursday collections on Friday 5th January
Friday 5th January	Service (one day behind normal schedule)	Friday collections on Saturday 6th January
Saturday 6th January	Normal service and Friday collections service	
Sunday 7th January	Normal service	

\*Please ensure your waste and recycling (including food and garden waste) is available for collection before 7am on your scheduled collection day.

## Christmas tree recycling

There will be a collection for the recycling of real Christmas trees from Monday 8 January to Friday 19 January 2024. If you currently receive a food and garden kerbside collection, kindly remove all decorations from your tree and leave out for collection on your scheduled day during this period.

If you do not have kerbside food and garden collections, please contact your property landlord or management company who can arrange collections from the nominated collection points.

You can also take your tree to the Reuse and Recycling Centre, Yabsley Street, London, E14 9RG.





# A national museum built w

With a wealth of museums, venues and art galleries within our borough, Tower



Top, pupils from Bangabandhu School, (credit J Stoker) and, below, the Princess of Wales was given a tour of the new museum (credit: V&A Museum)





# rich and for young people

Hamlets is rich in culture. In this edition we visit the re-opened Young V&A



The Young V&A in Bethnal Green has had an eventful five months since it opened its doors to the public in July, after an extensive £13m three-year redevelopment.

Welcoming more than 100,000 visitors in its first six weeks, the capital's free destination for children, families, and young people had a busy summer of play and creativity, as families and groups explored the museum's collections and permanent galleries.

More than 22,000 schoolchildren, teachers, children with Special Education Needs and Disabilities (SEND), community groups, families and local people helped shape the new museum.

Pupils from Bangabandhu School in Bethnal Green were among those who were involved in creating a display for the museum. Working with artist Emilie Queney, they built a model portraying young perspectives on community, which is showcased in the museum's gallery.

Salma, nine, said: "When we were working on the model, we got to say what our favourite local buildings are. Mine is the Buddhist Centre and I feel honoured to have helped create the display."

Humaira, 11 said: "To create the designs, we walked in the local area and took photos of important

buildings including the mosque."

Marie Maxwell, Executive Head Teacher, Bangabandhu and Globe Primary Schools, said: "For years, this museum has been an important community space as well as a useful teaching resource, so we were thrilled that our school was asked to play a role in the development.

"Being part of co-design and co-production and working closely with curators, artists, designers and architects has been a truly memorable experience for our pupils, giving them unique opportunities to express their creativity and have a say in shaping the museum experience they want.

"We know the Young V&A will continue to play an important role in the lives of schoolchildren, locally and across the country, for years to come."

Previously known as the V&A Museum of Childhood, the Young V&A showcases the power of creativity, displaying inspiring stories of children's ingenuity alongside approximately 2,000 works from the V&A's collections.

The redevelopment is the most significant intervention in the Grade II\* listed building's 150-year history and has completely transformed the museum.

Encompassing three galleries, a suite of larger and better equipped workshops and learning spaces, a purpose-built 515m gallery for showcasing major exhibitions, a shop and café, the entire museum has been redesigned around

children, young people, schools and families.

The galleries Play, Imagine and Design are designed with different age groups in mind, from babies to teens, but open for all to explore.

Each features interactive displays and activities, including immersive optical illusions, a performance area and stage, a marble run, self-portrait maker and open design studio, plus much more.

Ahead of reopening its doors to the public, school children from Globe Primary School welcomed V&A Patron, The Princess of Wales, for a visit to officially open the Young V&A.

After being welcomed by V&A Chairman Sir Nicholas Coleridge, Director Dr Tristram Hunt, Young V&A Director Dr Helen Charman, and the Mayor of London, Sadiq Khan, The Princess of Wales was given a tour of the building.

During the tour, staff shared their plans to support teachers and parents in developing children's love of art, design, and performance, through new resources, a schools programme, and activities and events in a suite of workshop spaces on the lower ground floor of the museum.

To celebrate the public opening, the Young V&A hosted a free summer festival with activities and performances from local groups such as Britain's Got Talent finalists IMD Dance, the Tower Hamlets based Grand Union Youth Orchestra, and hula-hoop group

Marawa's Majorettes.

Tristram Hunt, Director of the V&A, said: "The V&A believes in the transformative power of creativity, and that it's critical we work across all our sites to support and develop the next creative generation.

"The Young V&A has been designed with and for our youngest audiences – inspired by the way we learn, play and experience the world. It is a place where they can have fun, be imaginative and take inspiration from the V&A's incredible collections.

"The museum is the first of its kind and by continuing to work in partnership with teachers and schools, locally and across the country, it will become a national resource for supporting the teaching of art and design."

In October, the Young V&A opened Japan: Myths to Manga, its first exhibition for children and families.

Running until early September 2024, the exhibition takes young visitors on an atmospheric and playful journey revealing the influence of folklore and environment on Japan's art and design. It features more than 150 objects and artwork from the 15th century to today which visitors can interact with, from origami and music-making to creating a growing manga installation.

• The TH\_IS campaign can be used by anyone to celebrate our borough. Find out more at [www.towerhamlets.is](http://www.towerhamlets.is)

There are three new galleries Play, Imagine, and Design, aimed at different age groups but open for everyone





# Mulberry

Wood Wharf Primary

Apply now for  
September 2024



  
@MulberryWW  
follow us on  
social media  
for regular  
updates about  
school life

A brand new, fully  
inclusive primary  
school for local families.

We offer excellent, first class teaching  
and outstanding pastoral care.

## OPEN EVENING

Wednesday 13th December 2023  
Wednesday 10th January 2024

4pm – 5pm

## OPEN MORNING

Thursday 14th December 2023  
Thursday 11th January 2024

10am – 11am



## VISIT OUR WEBSITE

SCAN ME



If you have any  
questions about our  
lovely school, contact  
us and our friendly  
staff will be happy  
to help you.

Mulberry Wood Wharf Primary  
20 Brannan Street, London E14 9ZR  
☎ 020 8713 0183  
✉ [mulberrywoodwharf@mulberryschoolstrust.org](mailto:mulberrywoodwharf@mulberryschoolstrust.org)  
🌐 [www.mulberrywoodwharf.org](http://www.mulberrywoodwharf.org)  
✂ @MulberryWW

Part of the  
**Mulberry**  
Schools Trust





Marriage is Murder was one of the plays performed as part of the month

## A Season of Bangla Drama marks 20 years

Love was in the air in November, as A Season of Bangla Drama, the council's unique British-Bengali cultural festival, marked its 20th

year. This year's programme consisted of 31 events including 15 plays, two exhibitions and 14 fringe events.

The subtitle for the festival, '20 acts of love', was also the name of a short play, specially commissioned as part of an opening night double

bill.

• See more, including an intro from the mayor, at [www.towerhamlets.gov.uk/Bangladrama](http://www.towerhamlets.gov.uk/Bangladrama)

## Council cracks down on fraud

### COUNCIL NEWS

More than £340,000 worth of fines have been handed to fraudsters in the borough.

Tower Hamlets Council's Anti-Fraud Team seeks to protect public funds by working with local and national agencies.

The team is responsible for investigating all allegations of fraud received by the council and comprises of specialist investigators who deal with suspected:

- housing tenancy fraud
- procurement fraud
- payroll and pension fraud
- other kinds of internal fraud, bribery, corruption or money

laundering activity

- blue badge fraud and misuse
- staff fraud.

One notable case this year involved an anonymous tip off about a tenant who illegally bought and sub-letted a council property.

Following the tip off, an investigation revealed the tenant fraudulently applied for a council house as he was already a homeowner. The tenant then used the council house for short term rentals.

He was charged with fraud and ordered to pay a fine of £175,000.

Over the last year, the team has received 275 referrals of alleged housing fraud.

Thirty-three social housing

properties have been recovered from tenants that had breached the terms and conditions of their tenancy and seven right to buy applications have been stopped and one criminal conviction has been made.

In addition to the above the council has been able to:

- Reject 124 insurance claims totalling a value of £77,730
- Issue two profit orders totalling £267,207.51
- Seize 105 blue badges
- Investigate 38 internal referrals of alleged fraud breaches of staff Code of Conduct

Cllr Saied Ahmed, Cabinet Member for Cost of Living and Resources, said: "Stamping out

fraud is everyone's responsibility and is something we take very seriously.

"Our fraud team has a proven track record of working with local and national agencies to protect the public purse and bring about prosecutions.

"Residents can contact us confidentially to tell us about properties that they think might be illegally occupied and we'll investigate to ensure they are allocated to the people who need them most."

• To report a fraud in confidence, contact the team by calling 07732 402614 or email [antifraud@towerhamlets.gov.uk](mailto:antifraud@towerhamlets.gov.uk) or [monitoring.officer@towerhamlets.gov.uk](mailto:monitoring.officer@towerhamlets.gov.uk)



# Mulberry

Stepney Green Maths,  
Computing and Science College

“In the Sixth Form, teachers develop  
a real depth of knowledge and  
understanding in students.”

Ofsted Inspection Report  
31st January 2022

## Sixth Form

Your future **IS SAFE**  
in our hands

**APPLY  
NOW**

## SIXTH FORM RECRUITMENT

Applications for September 2024 now open



### Academic excellence

We aim to take students out of their comfort zone so they become resilient in the pursuit of knowledge and understanding.



### Planned programme of enrichment

We understand the importance of developing a broad range of transferable skills alongside excellent academic outcomes.



### Established UCAS and Oxbridge programme

We have a well-developed, early application and Oxbridge programme, tailored to the individual needs of each student.



### Trips and residential visits

We value learning outside the classroom: residential trips to Wales, Lake District and Rome are popular amongst our students.



### Broad and balanced curriculum

We offer many curriculum choices from Sports and Arts to Business and Humanities. The school is a specialist in Maths, Science and Computing.

**Mulberry Stepney Green**  
**Maths, Computing and Science College**  
Ben Jonson Road, London E1 4SD

☎ 020 7790 6361

✉ [mail@mulberrystepneygreen.org](mailto:mail@mulberrystepneygreen.org)

🌐 [www.mulberrystepneygreen.org](http://www.mulberrystepneygreen.org)

Part of the

**Mulberry**  
Schools Trust



# Free laptops for children

## INVESTING IN SERVICES

Fifty laptops have been donated to pupils to support the borough's Connecting Communities project, aimed at tackling the digital divide in the borough.

Pupils at St Luke's C of E Primary School were the first to receive their laptops during Get Online Week in October.

Get Online Week is an annual, national campaign to help people get online safely, confidently and affordably.

During the week the council worked with local organisations to run several events and activities to encourage more residents to get online and make the most of what that has to offer.

The laptops were presented by Cllr Maium Talukdar, Deputy Mayor and Cabinet Member for Education, Youth and Lifelong Learning, and Cllr Suluk Ahmed, Cabinet Member for Equalities and Social Inclusion.

Families who receive a device are connected to high-speed broadband, which is free for at least 12 months.

They also receive a seven-step training programme to ensure they know how to use their device, get support with online safety, enable access to educational resources and their GP, and to make sure they know how to manage their finances online.

Partners include Tower Hamlets Council, East End Community Foundation, social housing provider



The laptops were given away as part of Get Online Week

Poplar HARCA and education provider, the Letta Trust.

Two primary schools in Tower Hamlets, St Luke's C of E and Harbinger, have also been awarded 'Microsoft Showcase School' status for the second year running.

Microsoft Showcase Schools

are an elite group of schools that demonstrate using technology to enhance the educational experience of all the young people. Only a few institutions worldwide earn this status.

Alexandra Allan, Executive Headteacher at St Luke's C of E

Primary School, said: "We're so grateful to Tower Hamlets Council for their generous donation of laptops.

"The appropriate and skilled use of technology is fundamental in ensuring our pupils are ready for their futures."

## All secondary schools now offering free school meals

All 20 secondary schools in Tower Hamlets are now offering free school meals for all pupils.

Tower Hamlets Council is the first council in England to roll out free school meals to all pupils up to the age of 16, saving parents £550 per year per child.

While the Mayor of London is rolling out free school meals for all primary school children in London for one year, Tower Hamlets Council has gone further by launching free school meals for all primary and secondary school pupils.

The council has funded free school meals for all primary school children since 2014.

The scheme has now been rolled out to all secondary schools in the borough. The council has provided £722k of upfront investment to schools for all new equipment to be purchased and installed.

Studies show that eating a healthy, nutritious meal supports pupils with their learning and has been shown to improve behaviour and academic achievements, as well as reducing childhood obesity.



Eating a nutritious meal has many benefits for children





**We're holding a series of open days** to give you the chance to see around our school and find out what makes Solebay special. We have spaces available from Nursery to Year 6 and booking isn't necessary, just turn up on the day at reception - we'd love to see you!



### Why Solebay Primary Academy Nursery?

Our Nursery, rated Outstanding by Ofsted, is a warm, caring place where your child can grow and learn. We provide high quality day care, ensuring all children have the best possible start in life.

The Nursery is specially designed for preschoolers, with different creative areas for roleplay, art, music and lots more fun too. Experienced staff encourage development through play, with a wide range of exciting and stimulating activities. We build strong links between home and nursery so we're able to support children and their families effectively.

*Our Open Days*

7th Dec  
9.30 - 10.30 AM

14th Dec  
2.00 - 3.00 PM

21st Dec  
9.30 - 10.30 AM

### When can your child join our Nursery?

We provide places for children aged between 2-3, and they can join us as soon as they've had their second birthday, there's no need to wait until the next term. Our Nursery is open Monday to Friday during term time, and there are three sessions available:

**Morning** 8.00 - 12.00 | £45

**Afternoon** 1.00 - 5.00 | £45

**All day** 8.00 - 5.00 | £65

Snacks are included in the price.



Visit our website

### Follow Us

Follow what our Primary Academy is up to!

@solebayprimaryacademy

@solebayprimary





# Mulberry

School for Girls



X  
@MulberryTH  
**FOLLOW US**  
on social media for  
**REGULAR UPDATES**  
ABOUT SCHOOL LIFE



## CONFIDENCE CREATIVITY LEADERSHIP AND A LOVE OF LEARNING

Mulberry School for Girls is a place where the talents and abilities of girls are nurtured in a safe, creative space and where our students can develop their ambitions, creativity, leadership and the power for self-determination.

We believe these attributes will enable our students to lead enriched, happy and fulfilled lives, making a contribution to their own community, to British society and to global well-being.

Mulberry School for Girls is a vibrant, high achieving girls' comprehensive school for students aged 11 to 18.

### OUR ENRICHMENT OFFER INCLUDES:

- ◆ ARTS EDUCATION Special projects (e.g. Edinburgh Festival Fringe) and relationships with internationally renowned artists
  - ◆ GLOBAL EDUCATION Model United Nations and Youth Conferences
  - ◆ OUT OF HOURS LEARNING Over 50 weekly lunch-time and after-school clubs
  - ◆ WOMEN'S EDUCATION Women of the World Festival, Global Girl Leading and Women's Conferences
  - ◆ STUDENT LEADERSHIP Prefects, School Council, public speaking, high profile event hospitality
- ....and much more!**



Access to Mulberry  
Changemaker Programmes

**MULBERRY  
STEM ACADEMY**

IN PARTNERSHIP WITH  
MERCEDES-BENZ GRAND PRIX

**MULBERRY  
PRODUCTION  
ARTS  
ACADEMY**

### Mulberry School for Girls

Richard Street | Commercial Road | London E1 2JP  
☎ 020 7790 6327 | ✉ admin@mulberryschoolforgirls.org  
X @MulberryTH | 🌐 www.mulberryschoolforgirls.org

Part of the  
**Mulberry**  
Schools Trust

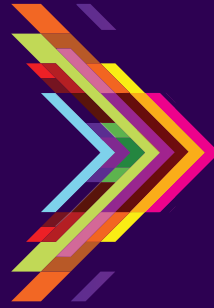
USE THE  
**QR CODE**  
TO VISIT OUR  
**WEBSITE**

SCAN ME





Mulberry UTC  
Where learning works



**REGISTER TODAY!**  
VISIT OUR WEBSITE

Employer-led learning beyond the classroom

# OPEN EVENING

Thursday 18 January 2024

4.30PM - 6.30PM



**Year 10  
and  
Year 12**

- ◆ Outstanding results
- ◆ Progression to top universities
- ◆ Unique specialist facilities
- ◆ Support from leading employers
- ◆ Access to the Mulberry STEM Academy and the Mulberry Production Arts Academy

**MULBERRY  
STEM ACADEMY**

IN PARTNERSHIP WITH  
MERCEDES-BENZ GRAND PRIX



64 Parnell Road  
London E3 2RU  
0203 137 7024

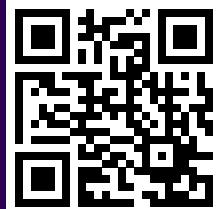
✉ [info@mulberryutc.org](mailto:info@mulberryutc.org)

@mulberry\_utc

✕ MulberryUTC

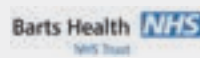
[www.mulberryutc.org](http://www.mulberryutc.org)

SCAN ME



Part of the  
**Mulberry**  
Schools Trust

Our industry partners:





# Victoria Park is officially one of the best in country

## PARKS

Victoria Park has been voted as one of the top ten green spaces in the UK for the eleventh year running.

The 'People's Park', which attracts

nine million people every year, was given a Green Flag Award by Keep Britain Tidy earlier this year, an internationally-recognised award for being well managed and accessible.

Residents across the UK were then asked to pick their favourite

Green Flag Award park for the 2023 People's Choice Award, with Victoria Park, which hosts the annual music festival All Points East, being chosen as one of the top ten.

As well as this achievement, a new horticultural training centre has

been opened at Victoria Park. It will be a place for the whole community to engage in growing projects and learn horticultural skills. The centre will also be a base for the hundreds of corporate volunteers who help maintain the park every year.

Victoria Park has again been voted as one of the top ten parks in the country



## Improvements to keep parks safe and accessible

New or improved play and playground facilities are being unveiled across the borough.

A new soft playroom with accessible equipment for under fives will open at The Children's Pavilion, Mile End Park in January.

Access to the play room will be through the 'stay and play' sessions that take place in The Children's Pavilion in Locksley Street, Monday to Friday, term time only.

Sessions are free and all families are welcome.

Visitors to St James Gardens, in Ratcliffe Lane, Limehouse, can also look forward to new play equipment being installed, with at least 50 per cent of it accessible to children with extra needs.

New benches and bins will also be fitted and shrubbery in the park

will be cut back to reduce anti-social behaviour. New plants and more trees will be planted to improve the air quality in the park.

From early to mid-December, play equipment including the spider and net at Belgrave Street Open Space in Stepney Green will be updated or replaced. New pieces of play equipment will include items suitable for toddlers.

The council has also installed new lighting at Poplar Recreation Ground, Belgrave Open Space, in Stepney Green, and Rhoda Street Open Space in Bethnal Green.

The lighting will help make the parks safer and more welcoming places, particularly in the longer winter hours of darkness.

The improvements have been funded through the council's parks



The new play equipment in St James Gardens

capital programme.

The latest in a series of heritage panels has also recently been installed in Weavers Fields in Bethnal Green.

The panel tells the story of how the rural hamlet of Bethnal Green trebled in size in 30 years and

how it became known for market gardening and weaving.

The silk weavers gave the name to the park that was opened after the area was severely damaged during the bombing raids of the Second World War. Find the panel in the park to read the full story.



# Mulberry

Academy London Dock

**@MulberryDock**  
**FOLLOW US**  
on social media for  
**UPDATES ABOUT**  
**OUR NEW SCHOOL**

**A BRAND NEW 11-19 MIXED SCHOOL**

**OPENING SEPTEMBER 2024**

**WITH YEAR 7 STUDENTS**



**We look forward to welcoming our first cohort of Year 7 students to our new school in September 2024.**

Visit our website for more information about our excellent school.

SCAN ME



**Mulberry Academy London Dock**

10 Virginia Street, London, E1W 2AD

☎ 020 7790 6327

✉ [mulberrylondondock@mulberryschoolstrust.org](mailto:mulberrylondondock@mulberryschoolstrust.org)

🐦 @MulberryDock

🌐 [www.mulberrylondondock.org](http://www.mulberrylondondock.org)

Part of the  
**Mulberry**  
Schools Trust



# Have your say on borough's future developments

## COUNCIL THAT LISTENS

A consultation for Tower Hamlets Council's new Local Plan is running until 18 December 2023.

As the council's most important planning document, the Local Plan is used to guide decisions on planning applications in the borough.

This means that if someone wants to develop a new building or change its use, they should make sure it follows the policies in the Local Plan.

The plan outlines new requirements for affordable housing as well as draft policies on topics such as improving green spaces, supporting small businesses, and encouraging gender-inclusive development.

One of the new housing policies in the plan proposes that development sites must offer a minimum of 40 percent of new homes as affordable, with 85 percent of these at social rent and 15 percent as intermediate housing. To address overcrowding, the council has stated that 65 percent of social rented homes should have at least three bedrooms.

Increasing the number of tall

buildings in locations across the borough is another policy that intends to alleviate the impacts of the housing shortage.

The plan is due to be formally adopted in winter 2025.

• Visit [www.towerhamlets.gov.uk/localplan](http://www.towerhamlets.gov.uk/localplan), or write to Strategic Planning Team, Tower Hamlets Town Hall, 160 Whitechapel Road, London, E1 1BJ.

Share your views on future developments in the borough

How can we improve community facilities in Tower Hamlets?



## Five new Resident Hubs open for residents

Five new Residents' Hubs have been unveiled in Tower Hamlets as part of a drive to transform customer services in the borough for all residents.

The new hubs in Bow, Poplar, Bethnal Green, Whitechapel and the Isle of Dogs provide residents with the opportunity to access services in-person, rather than having to rely on phonecalls or websites.

Resident Bodrul Islam said: "There are still many people in our community who are not confident to send emails and fill out forms

digitally and unfortunately don't have anyone to help them.

"That is why it is important to have the hubs where you can go and speak to someone in person.

"Just having someone on hand to help with uploading a document or scanning in a form will be a relief to many."

As part of National Customer Services Week, the council celebrated the opening of its latest hub based at the Professional Development Centre in Bethnal Green on 2 October.

Cllr Kabir Ahmed, Cabinet Member with responsibility for Customer Services, said: "You can access our services online and the move towards digital contact will make things quicker and more efficient. But we realise not everyone is digitally enabled and have created a series of Residents' Hubs across the borough, providing much needed support services for our most vulnerable residents.

"Our Residents' Hubs will offer a wide range of direct face to face services to our residents including

help and support with housing, council tax, benefits, domestic abuse, health and wellbeing, employment and skills, debt management and welfare."

Cllr Ahmed also formally launched the council's first Customer Experience Strategy at the hub.

The strategy sets out the council's vision that regardless of whatever channel customers use to contact the council - in person or digitally - they will receive an excellent service.



# Natureworks

Architecture studio

At Natureworks Design, we specialise in designing and managing architectural projects, emphasising sustainability and high-quality contemporary design.

We collaborate closely with homeowners and commercial clients to craft spaces imbued with heart, warmth, and a profound connection to the natural world.

Feel free to contact us to discuss your project further.

[studio@natureworksdesign.co.uk](mailto:studio@natureworksdesign.co.uk)

0203 304 2338

[www.natureworksdesign.co.uk](http://www.natureworksdesign.co.uk)



# Thinking about fostering?



**Come to our information evening to find out more.**

Discover what foster carers do and how Tower Hamlets Council offers carers lots of support including fantastic training, a 50% reduction in your council tax bill and up to **£850 per week** (per child depending on age and need).

**Wednesday 13 December 2023  
6pm – 7.30pm  
Town Hall  
160 Whitechapel Rd,  
London E1 1BJ**

**Call: 020 7364 1246  
[www.fosteringtowerhamlets.co.uk](http://www.fosteringtowerhamlets.co.uk)**





# Winners of Mayor's Cup are crowned

The Mayor's Cup tournament returned this year with a successful final at Mile End Stadium.

FC Brick Lane beat Vallance FC 1-0 to lift the senior men's trophy, which was presented by Cllr Maium Talukdar, Deputy Mayor.

Teams battled through the hot weather to put in brilliant performances.

Westward Boys beat Newark Youth 4-0 to claim the Under 16 winners title, and Tower Utd beat Westward Boys 2-0 to become the Under 15 champions.

The Mayor's Cup, hosted by the council's Sports and Physical Activity team, is delivered in partnership with the support of key partners and sponsors.

Held over two weekends, nearly 1,000 local players aged 8 and over took part to showcase their skills in eight adult and youth categories.

There were also hundreds of spectators who turned up to cheer on their favourite teams.

Heats were played on 2 and 3 September, with participants packing the pitches at Victoria Park.



The winning senior men's team FC Brick Lane celebrate

# 'Any of us could foster'

## COUNCIL NEWS

'It really can be any of us' - that's the message of a new film aimed at anyone in the borough with room to care for a child or young person.

Launched in September, the film, called Any Of Us, has been produced by a partnership of more than 80 councils including Tower Hamlets, and children's trusts to

promote local authority fostering.

Any Of Us looks at three different people who all show attributes needed to be a foster carer in their daily lives, but who will become Chloe's foster carer?

Ashraf Lunat, who has been a Tower Hamlets foster carer for more than 15 years, said: "The film is great in how it presents the various scenarios.

"I have looked after about 50

children through the years and have seen many positive outcomes, changes and achievements in the children and young people.

"Every child is different, and fostering is more than providing somewhere to sleep, it is about taking responsibility, making vital decisions, and looking after a child."

The council needs more people of all ages and backgrounds to become foster carers and strongly

encourages those who can offer a home to vulnerable children and young people to consider becoming a foster carer.

The council is hosting a fostering information event from 6pm to 7.30pm on Wednesday 13 December at the Town Hall, in Whitechapel.

• Watch the Any of Us film and find out more about fostering at [www.youtube.com/towerhamletscouncil/videos](http://www.youtube.com/towerhamletscouncil/videos)

The film looks at three people who could all be foster carers for Chloe





# 14 convicted for drug offences as part of police and council op

## SAFER COMMUNITIES

Fourteen men have been convicted for a total of more than 54 years for drug offences in Tower Hamlets after a complex operation.

The activity formed part of Operation Continuum, an intelligence-led operation led by police and the council in response to ongoing reports of drug dealing, drug use and associated criminality in Tower Hamlets.

The men were convicted of drug offences at Snaresbrook Crown Court:

- Abu Taher, of Arrow Road, E3 - nine years in prison
- Riaz Hussain of Cherrywood Close, E3 - eight years in prison
- Mohid Ali of Chipping Row, CM3 - five years, three months
- Nazir Hussain of St Leonards Street, E3 - five years, eight months
- Mohammed Minanur Rahman of Truman Walk, E3 - six years
- Mohammed Shah Rahman of Longbridge Road, RM8 - three years, seven months
- Ali Akbar Hussain of Ben Jonson Road, E1 - two years
- Mohammed Hassan of Singleton Road, RM9 - three years, eight months
- Naim Sami of Bow Road, E3 - five years, six months
- Shuheb Miah of Allen Road, E3 - two years, eight months and two years, six months disqualified from driving.
- Mohammed Imran Ali of Ballinger Point, E3 - 20 weeks
- Syed Ahmed of Wolfe Gardens, E15 - 15 months, suspended for two years
- Abdullah Al-Huda of Poplar High Street, E14 - 23 months, suspended for 24 months
- Mahidur Rahman of Cranleigh Gardens, IG11 - two years, suspended for 24 months

A/DI Sam Livesey said: "Central East Police is committed to helping young people affected by violence and by association, drugs supply that is linked to violent crime.

"We will continue work with communities and partners from the borough along with those from across London, balancing the need for diversion and support with enforcement."

## Tower Hamlets is proud to be No Place for Hate



Residents and lead member Cllr Abu Tahla Chowdhury, Cabinet Member for Community Safety, joined in a number of activities

A football match, peace walk and awareness stall were just some of the ways Tower Hamlets Council marked National Hate Crime Awareness Week.

Tackling hate crime is a council priority and Tower Hamlets has a multi award-winning No Place for Hate forum, campaign

and team which coordinates a range of activities during National Hate Crime Awareness Week from 14-21 October.

People were also encouraged to sign the council's pledge against hate, which aims to highlight how tackling hate is everyone's business.

So far, 5,502 personal pledges have been signed and 211 organisation

pledges.

Cllr Abu Tahla Chowdhury, Cabinet Member for Community Safety, said: "We are proud to be a diverse borough and do not tolerate hate of any kind. We are aware that hate crimes are something that need to be tackled year round and we will continue to raise awareness,

tackle hate crimes and support victims in innovative ways to show everyone that there is no place for hate in Tower Hamlets."

• For more information, email [hatecrime@towerhamlets.gov.uk](mailto:hatecrime@towerhamlets.gov.uk) and complete the pledge at [www.towerhamlets.gov.uk/hatecrime](http://www.towerhamlets.gov.uk/hatecrime)





Professor Alistair Noyce, Executive Mayor Lutfur Rahman, Superintendent Jai Singh, and Cllr Abu Talha Chowdhury

# Nitrous oxide: Know the risks

"Nitrous oxide (NOX/N<sub>2</sub>O) can damage your spinal cord and cause serious, permanent disability" - that is the message to young people in Tower Hamlets as part of a programme to highlight the consequences of using the drug.

N<sub>2</sub>O Know the Risks is a new programme run by Tower Hamlets



**The most common thing that happens is that they damage their spinal cord**

Council and Queen Mary University which aims to educate people about the dangers of using nitrous oxide, including causing the vitamin B12 to stop working, resulting in paralysis and nerve damage.

The project includes harm intervention workshops instead of fines and preventative workshops in schools and community settings.

At the Royal London Hospital, there is a case of nitrous oxide related nerve damage every nine days, and it is an emerging public health issue.

Professor Alastair Noyce, Centre for Preventive Neurology at Queen Mary University of London, and Consultant Neurologist at Barts Health NHS Trust, said: "Over the last few years, I've seen a couple of

hundred patients who have been using nitrous oxide and have come to harm. The most common thing that happens is that they damage their spinal cord.

"They have difficulty walking, problems feeling their arms and legs, and sometimes problems going to the toilet, and sexual dysfunction."

Workshops have already taken place, and those involved have been positive about the impact they have had.

One person said: "I now know the risks of nitrous oxide. I used to think it was completely harmless and if you use it it's completely fine and does only minor stuff. Now I'm definitely not using it. Instead of telling people off they just informed us of the risks."

## Nox now Class C drug

On 8 November, nitrous oxide was made a Class C drug. This means possession of nitrous oxide, where a person intends to inhale it for psychoactive effect, is now an offence.

Anybody found in possession could face criminal prosecution, including an unlimited fine, a visible community punishment or a caution which would appear on your criminal record. Our community safety team will continue to work to tackle its use with police partners, and educate on the health harms linked to the use of nitrous oxide.

## Engagement events and dog awareness

Hundreds of residents and businesses have engaged with the council's Community Safety Team at a variety of sessions.

There have been safety walkabouts and safety surgeries in different wards, which give residents the opportunity to show council teams and police the issues in their areas, get crime prevention advice, and receive help and support with any ongoing issues.

The team also held a responsible

dog ownership event in Mile End Park with charity The Dog's Trust, mounted police and police dogs. Residents were given information about safe dog ownership and what to do if they see a dangerous dog.

Events will continue throughout the winter and all residents are encouraged to attend.

- Find out more on the council's social media channels or at [www.towerhamlets.gov.uk/safercommunitydays](http://www.towerhamlets.gov.uk/safercommunitydays)



Mounted police and police dogs joined one of the awareness events



# 'The multi-cultural melting pot of the East End'

## HISTORY



Gary Hutton runs the popular Facebook page *Product of a Postcode* and has also written

a book about the history of the East End. Here he shares some thoughts on the past and present of our diverse borough.

I was born in the Royal London Hospital, in Whitechapel, which is now the town hall, to Irish immigrant parents. There was once a large Irish community in the East End as a whole, and I'm one such person. I describe myself as a cockney of Irish descent.

I have a hunger for the history of my birthplace – I am not sure if I'm a local historian or just a passionate history junkie. The East End is my topic and that gets its name from being situated at the East End of the old London city gates, which is Aldgate. The East End must not be confused with east London – they are two completely different places. You wouldn't call all parts of west London 'The West End', would you? No, only theatre land which is situated at the West End of the city gates and that is where it gets its name. So the East End is a very small place that consists of four postcodes E1, E2, E3, E14. And the rest is east London.

There are many things to be proud of in Tower Hamlets, but one is our rich history which can be seen on almost every road in our borough.

Spitalfields takes its name from the hospital and priory, St. Mary's Spittel that was founded in 1197. Lying in the heart of the East End, it is an area known for its spirit and strong sense of community. It was in a field next to the priory where the now-famous market first started in the thirteenth century.

As an international city, London is celebrated for its diversity in population. The East End has always been recognised for the wealth of cultures represented. Spitalfields served as a microcosm of this - the 'melting pot' fusion of east and west. Historically, it has played host to a transient community primarily



Spitalfields Market in 1981/82. Credit: Stanley Mindel

for new immigrants.

Spitalfields had been relatively rural until the Great Fire of London. By 1666, traders had begun operating beyond the city gates on the site where today's market stands. The landmark Truman's Brewery opened in 1669, and in 1682 King Charles II granted John Balch a Royal Charter giving him the right to hold a market on Thursdays and Saturdays in or near Spital Square.

The success of the market encouraged people to settle in the area and following the edict of Nantes in 1685, Huguenots, a religious group of French Protestants, fleeing France brought their silk weaving skills to

Spitalfields. Their grand houses can still be seen around what is now the conservation area of Fournier Street which is my favourite street – I can't count the number of times I have walked up and down it.

The Huguenots were soon followed by Irish weavers in the mid-1700s following the decline of the Irish linen industry and, subsequently, many of whom would work on the construction of the nearby London docks. As the area grew in popularity, Spitalfields became a parish in its own right in 1729 when Hawkesmoor's Christ Church was consecrated.

The Irish were followed by East European Jews escaping the Polish pogroms and harsh conditions in

Russia, as well as entrepreneurial Jews from the Netherlands. From the 1880s to 1970s, Spitalfields was overwhelmingly Jewish and probably one of the largest Jewish communities in Europe with more than 40 synagogues. The Sunday markets we have today are down to the Jewish community that settled as they wouldn't work on the sabbath which is a Saturday and so the Sunday market were born.

Today, the area is still evolving and ever-changing, and will never stop. I hope one day my own history will be read and play its part in the history of the amazing melting pot.

By Gary Hutton  
**Mr Product of a Postcode.**





Spitalfields through the ages. Top in 1912, credit Tower Hamlets History and Archives, and bottom credit: H Reed, used under Creative Commons License





# Evolution not revolution as Canon Barnett Primary joins the Mulberry Schools Trust

On the fringe of the City at the heart of the East End you'll find a primary school that's evolving. Nestled between Brick Lane and Aldgate East Underground station, Canon Barnett Primary has been serving generations of East End families from the same building its philanthropic founders built in 1901.

The school came to symbolise the transforming impact of education reform on opportunities for disadvantaged children in Victorian Tower Hamlets. Renamed Mulberry Canon Barnett Primary, it joined the Mulberry Schools Trust earlier this year. Since then, the school community has been learning how it can build on that legacy of inclusive education with the new ideas and resources from the wider family of Mulberry schools in the area.

"It was magical to come into a building with so much history", explains Immaculada Matthews, the school's new Headteacher. "The school was founded on the principle of equal opportunity – that a good education should be available to every child, regardless of their circumstance. It's that 'equity' I want to be at the heart of everything we do – using that abiding vision of our nineteenth century predecessors to help shape a local community that's fit for the global challenges of a twenty-first century world."

## What's changing?

Mulberry Canon Barnett Primary has long been a well-regarded school where Ofsted inspectors have found a strong and caring leadership and staff team determined to "broaden pupils' experiences and raise their aspirations". The whole school family pays attention as much to personal as academic development, and generations of pupils have been leaving the school well-rounded and ready to thrive.

As parents and pupils already feel that teachers make learning

"enjoyable and interesting", what difference will joining the Mulberry Schools Trust and a new Headteacher make?

"I was already hugely impressed by this wonderful school and its ethos of working with integrity and respect to build everyone's ambition", Headteacher Immaculada explains. "I made sure I spent time with the family and staff community before I started, learning about their distinctive needs in the face of such rapid widespread change – in society, technology and the workplace – and what the Mulberry Trust community could do to help support them."

"From the moment families drop off their children, we become their parents, play-workers, early care providers", she continues, "placing demands on our busy, dedicated team of leaders and teachers.

“

**I was already hugely impressed by this wonderful school and its ethos of working with integrity and respect to build everyone's ambition”**



I'm making sure everyone in the school family has the leadership, support and resources they need to help all those we serve to develop and flourish, whatever their circumstances, talents or ambitions."

Being part of the Trust means children can now enjoy their education and development in like-minded schools and settings from the age of 3 to 19 years, although Mulberry Canon Barnett Primary still feels it has as much to do to build the local primary sector to address gaps in opportunity, as it does providing a pipeline for Mulberry's secondary schools.

While reinvigorated by the opportunities offered by joining the Mulberry Schools Trust membership, the school team continues to focus on outstanding, inclusive education that meets the distinctive needs of all the children it serves now, so they can participate as effective members of wider society whatever their journey in the future.

## Care, support and opportunity for all

"Children's brains are like a sponge", reflects the school's Executive Headteacher, Sarah Jane Bellerby, who's been contributing to the school's evolution for more than 15 years. "Understanding how brains develop is vital for understanding how children learn – particularly in those formative years while they're with us, up to the age of 7. If you can read fluently by then, for example, it opens the door to all possibilities."

Committed to providing an outstanding education for all pupils, regardless of potential, the school knows that personal, social and emotional wellbeing needs to be nurtured alongside knowledge and skills. As children learn best with plentiful opportunity to explore and learn in playful





“  
**We want to give them the confidence and self-belief to hold their heads high. It's not just about tests. We want every child to talk about what they're good at”**

practical and questioning ways, there's therefore also time for rest, reflection and play.

Alongside the main curriculum, there's a rich programme of visits, visitors and extra-curricular activities that expands children's interests, and adds to their enjoyment of learning. Some of these have emerged from newly formed relationships across the Mulberry Schools Trust family.

Year 5s take part in weekly sessions with the prestigious Mulberry STEM Academy, a partnership with Mercedes-Benz Grand Prix Ltd, deepening understanding of science and the technology, particularly for those with an appetite for such areas in the future. A Mulberry School for

Girls teacher also teaches an after school STEM class. The school recently showcased its creativity in the Mulberry Festival of Arts, and the Trust's Heads of Arts and Music have contributed expertise and support for work and performance of impressively high quality.

Sharing the Trust's vision for "outstanding achievement for all", the school team knows that's not just about academic results. "Whatever the privileges or disadvantages they've had in their circumstances or upbringing, anything is possible for our children", explains Sarah Jane. "We want to give them the confidence and self-belief to hold their heads high. It's not just about tests. We want every child to talk about what they're capable of. Our message is that wherever you are – academically, in sport, creativity, music, performance – we will help you feel at your best, distinctive, comfortable being yourself, and knowing what you're good at.

Immaculada Matthews neatly sums up her own hopes for the school family: "When our staff get home they feel they've made a difference, and recognise the wide and powerful impact they have made. When our children get home their families can see the results of all their learning and experiences, and feel proud. And in future, the children see that whatever the challenges or hardships they faced, we helped them on their journey to overcome them and flourish."

**Mulberry**  
 Canon Barnett Primary

We are now part of the Mulberry Schools Trust  
 Follow us on social media @MulberryCB

**Mulberry Canon Barnett Primary Open Events**

Mulberry Canon Barnett Primary offers new and rich learning experiences, with access to excellent enrichment opportunities such as the Mulberry Schools Trust's prestigious Mulberry STEM Academy and Mulberry Production Arts Academy.

Come and visit us to hear more about the exceptional education your child will receive at our school.

**Open Morning**  
 Wednesday 6<sup>th</sup> December, 10am-11am

**Open Evening**  
 Wednesday 13<sup>th</sup> December, 4pm-5pm

**Now offering wraparound care!**

For more information about our lovely school scan the QR code or visit [www.mulberrycanonbarnett.org](http://www.mulberrycanonbarnett.org)

**Mulberry Canon Barnett Primary**  
 Gunthorpe Street, London E1 7RQ  
 ☎ 020 7247 9023  
 ✉ admin@mulberrycanonbarnett.org  
 🌐 www.mulberrycanonbarnett.org  
 ✖ @MulberryCB

Part of the **Mulberry Schools Trust**

MULBERRY PRODUCTION ARTS ACADEMY  
 MULBERRY STEM ACADEMY  
 MUSIC MARK SCHOOL  
 PSQM

**Find out more about Mulberry Canon Barnett Primary and see for yourself what's available for your children at one of the forthcoming Open events – you can find details above. Or give the school a call to have a chat or arrange a visit.**

☎ 020 7247 9023 ✉ admin@mulberrycanonbarnett.org  
 🌐 www.mulberrycanonbarnett.org ✖ @MulberryCB



We offer academic excellence in a fun and exciting school



Our students enjoy memorable cultural experiences, linked to a rich, vibrant and creative curriculum that extends their learning beyond the classroom.

Year 7 weekend at Hindleap Warren

Climbing at Shadwell Basin

## Amazing enrichment opportunities



STEM



Student Leadership

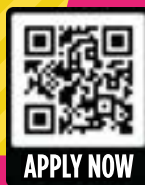


Music



Art

# JOIN OUR SIXTH FORM



APPLY NOW

**Sixth Form enrichment**  
Sixth Form students participate in workshops, visits to universities, lectures, trips and arts events as well as a wide range of activities during their Wednesday afternoon enrichment sessions.

For more information about our amazing school follow the QR code or visit [www.mulberryacademysshoreditch.org](http://www.mulberryacademysshoreditch.org)

SCAN ME



Mulberry Academy Shoreditch . Gosset Street . London E2 6NW  
020 7920 7900 info@mulberryacademysshoreditch.org  
@MulberryAS | MulberryAcademyShoreditch

Part of the  
**Mulberry**  
Schools Trust



# Mulberry

Academy Shoreditch

Sixth Form

APPLY NOW



## AN EXCELLENT SIXTH FORM EXPERIENCE...

- + Win a scholarship of up to £500
  - + Visit a university in the first half term
  - + Participate in our dedicated enrichment activities every Wednesday afternoon
  - + Be part of the Mulberry STEM Academy in partnership with Mercedes-Benz Grand Prix Ltd
  - + Attend an international trip in 2024
  - + Secure valuable work experience
  - + Attend a university summer school
- ...and much more



Contact our Head of Sixth Form, Mrs Tamsin Scales for further details about our outstanding offer

To register your interest and apply to our amazing school follow the QR code

[www.mulberryacademyshoreditch.org/apply-now](http://www.mulberryacademyshoreditch.org/apply-now)

Mulberry Academy Shoreditch . Gosset Street . London E2 6NW

020 7920 7900 sixthform@mulberryacademyshoreditch.org

@MulberryAS | Mulberry Academy Shoreditch

Part of the  
**Mulberry**  
Schools Trust

SCAN ME





# 1978: The Turning Point

A new exhibition at Tower Hamlets Local History Library and Archives reveals the dramatic events in 1978, which were sparked by the racist murder of Altab Ali, a 24-year-old Bengali leather garments worker, and pays tribute to the activists who mobilised around the rallying cry of justice that followed.

Local photographer Paul Trevor documented how members of the local Bengali community endured racial abuse as a constant factor of everyday life, and the moment at which they mobilised against racist violence and institutional police racism.

The exhibition, named Brick Lane 1978: The Turning Point, brings together 70 of Trevor's photographs as well as original archival materials and first person testimony.

The exhibition is on show until 16 March and a programme of events has also been organised to link with the exhibition. Check the what's on page at [www.ideastore.co.uk/local-history](http://www.ideastore.co.uk/local-history) for the full programme.

- Visit the exhibition at the council's Local History Library & Archives in Bancroft Road, Mile End, E1.



One of the photos on display in the exhibition at Bancroft Road. Photograph copyright Paul Trevor.

## Rare books for sale at archive's event



Pick up a bargain at a local history book sale on Saturday 16 December

Tower Hamlets Local History Library and Archives is holding a local history book sale on Saturday 16 December.

The sale will feature duplicate books and pamphlets which have been withdrawn from the local history library collection and is a great opportunity to find affordable pre-Christmas gifts for the bookworms in your life.

Titles available for purchase include many rare and out-of-print books covering a wide range of East End topics such as social

history, politics, fiction, and local biographies.

All hardbacks will be priced at £5 each, and paperbacks will be £2.

New publications include the 2024 edition of the Friends of Island History Trust calendar.

Proceeds from the sale will be used to acquire new stock for the library.

The sale will be held at Tower Hamlets Local History Library and Archives located at 277 Bancroft Road, Mile End, E1 between 10am and 2pm.

## Celebrating women's contributions

Women's History Month and International Women's Day will be celebrated in Tower Hamlets this March.

Community organisation Alternative Arts is inviting women artists, activists, writers,

performers, community groups and organisations to contribute to a diverse programme of exhibitions and events across east London to mark Women's History Month during March 2024.

If you are planning a relevant

exhibition, performance, event or workshop during March 2024, email [info@alternativearts.co.uk](mailto:info@alternativearts.co.uk) before 8 January 2024 for inclusion in the Women's History Month programme which will be widely promoted.

The programme will also include events celebrating International Women's Day on 8 March 2024 and International Women's Week from 4-10 March 2024.

Participation is free and everyone is welcome to join in.



## Exhibitions

### 'This is Our History' exhibition launch

This exhibition marks the end of a two year partnership supporting school children to uncover the history of the East End through the creation of five different resource booklets. The exhibition features artwork produced by school children who attended workshops at Tower Hamlets Local History Library and Archives during the research and production process. The launch event is suitable for the whole family, including badge-making, collage map activities and tote bag printing.

**Saturday 20 January, 2-4pm**  
Tower Hamlets Local History Library & Archives, 277 Bancroft Road, Mile End E1 4DQ

### This Is Us

An exhibition which showcases the work produced by the Social Care Art Groups at the Bromley by Bow Centre. Students used a variety of media to create a character and a story. These have been depicted using paintings, collage, ceramics, textiles, mosaics and sculpture.

**7 December 26 January 2024**  
Brady Arts and Community Centre, 192-196 Hanbury Street, Whitechapel E1 5HU



Students used different media

### Encounters

A celebration of the creativity and innovation of Tower Hamlets schools. The exhibition will showcase artwork produced by students and there will be a series of workshops during the exhibition to encourage and develop creative practice for current students.

**28 February-10 March**  
The Art Pavilion, Mile End Park, Clinton Road, E3 4QY

### Pattern

This exhibition highlights work created in class by the Art4U2 group. They have explored how pattern is used in communities and cultures across the world and how pattern has

been used over the centuries in textiles, fashion and interior design. The work takes inspiration from key art historical figures who have used shape, line and form as well as the use of pattern in everyday life. It celebrates the beauty and variety of symmetry and decoration.

**1-29 February**  
Brady Arts and Community Centre, 192-196 Hanbury Street, Whitechapel E1 5HU



Explore how patterns are used

### Andrew Pierre Hart

London-based artist Andrew Pierre Hart explores the relationship between painting and sound. He has produced a series of six new oil paintings which are presented with a video installation and musical composition. The commission is accompanied by a live events with dance, electronic music, discussion and performance.

**15 February-7 July**  
Free  
Whitechapel Gallery, 77-82 Whitechapel High Street, E1 7QX  
[www.whitechapelgallery.org](http://www.whitechapelgallery.org)

## Fairs and markets

### The Big East Winter Market

Back by popular demand, Noor Aromas is bringing together local small online businesses with a selection of bakes, candles, food, crafts and more at this family-friendly market.

**16 December**  
The Ecology Pavilion, Mile End Park, Grove Road E3 5TW

### Urban Makers Christmas Market

Fifty different designers each day will be selling everything from Christmas gifts and decorations, to homewares, jewellery, art, candles and accessories. All sustainable and ethical. Food and drink from Alibi Pantry and Frasers Mulled Wine.

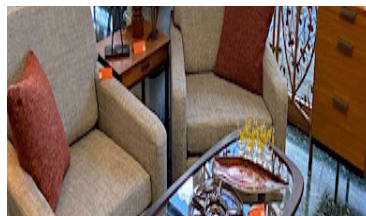
There will also be a Christmas reed diffuser and room mist workshop.

**Free entry**  
**9-10 December, 11am-5pm.**  
The Ecology Pavilion, Mile End Park, Grove Road E3 5TW  
[www.urbanmakers.co.uk](http://www.urbanmakers.co.uk) to book online

### London Flea

The Vintage Furniture Flea combines with Judy's Affordable Vintage Fair for one big vintage shopping and furniture event. There will be more than 70 stalls of mid-century furniture, vintage homewares, retro fashion and accessories.

**February 4, 2024, 11am-4pm**  
The Ecology and Art Pavilions, Mile End Park E3.  
<https://judysvintagefair.com/furniture-flea/>



Vintage and retro flea market

## Classes

### Art4U2

Come along to art classes to develop your skills and learn how to use a variety of media. For the first half of the spring term 2024, students will be exploring the versatility of pencil, watercolours, pastels and acrylics. After half term the focus will be on inks, charcoal, oils and pen.

**£8 per session.**  
**17 January-13 March**  
Wednesdays, 1-3pm and 6.30-8.30pm  
Brady Arts and Community Centre, 192-196 Hanbury Street, Whitechapel E1 5HU  
Drop-in or sign-up by emailing [ginnyhawke5@hotmail.co.uk](mailto:ginnyhawke5@hotmail.co.uk)

### A Team Arts Education - Free half term workshops for ages 12-19

Team Arts Education support young people with their creativity and wellbeing through providing opportunities to aspire and achieve. The spring programme is delivered in partnership with Alexander McQueen with workshops exploring fashion and textiles for those interested in a career in the creative

industries. Sessions are for those who live, work or study in Tower Hamlets.

**Brady Arts and Community Centre, 192-196 Hanbury Street, Whitechapel E1 5HU**  
[www.towerhamlets.gov.uk/arts](http://www.towerhamlets.gov.uk/arts)

### Festive Tea Dance

Residents over the age of 50 are invited to celebrate the season of goodwill with live music from jazz and swing band The Sunshine Kings, dancing and refreshments. Enjoy live music and festive cheer with New Orleans, Dixieland, 20s, traditional and vintage style sounds with Tony Lane leading the dancing. The choir of St Paul's Way Secondary School will perform before the band starts. Light refreshments will be served.

This event is free and for Tower Hamlets residents only. Booking is essential. Call 020 7364 3115 / 020 7364 7900 between 10am and 2pm Monday to Friday or email [festivalsandevents@towerhamlets.gov.uk](mailto:festivalsandevents@towerhamlets.gov.uk) to book your place

**14 December, 1.30pm-4.30pm**  
The Art Pavilion, Mile End Park, Clinton Road, E3 4QY



Festive tea dance

### Recognising the Global Afrikan Contribution

A free family friendly event to celebrate the Afrikan contribution in Tower Hamlets through history and culture, including a community market featuring stalls from Tower Hamlets, Afrikan-led voluntary and community sector, businesses, dance and drumming workshops, history presentations, poetry, spoken word, music and food from Global Afrika. Programme may be subject to change.

**20 January**  
The Ecology Pavilion, Mile End Park, Grove Road E3 5TW



Celebrate the Afrikan contribution





# KNOW YOUR COUNCIL

## BETHNAL GREEN EAST



**Sirajul Islam**  
(Labour)

cll.sirajul.islam@towerhamlets.gov.uk  
07931 708 308



**Ahmodul Kabir** (Aspire)

ahmodul.kabir@towerhamlets.gov.uk



**Rebaka Sultana**  
(Labour)

rebaka.sultana@towerhamlets.gov.uk  
07808 275552

## BETHNAL GREEN WEST



**Musthak Ahmed**  
(Aspire)

musthak.ahmed@towerhamlets.gov.uk  
07723 622204



**Abu Chowdhury**  
(Aspire)

abu.chowdhury@towerhamlets.gov.uk  
07951 125543



**Amin Rahman**  
(Aspire)

amin.rahman@towerhamlets.gov.uk  
07949 006520

## BLACKWALL & CUBITT TOWN



**Ahmodur Khan**  
(Aspire)

ahmodur.khan@towerhamlets.gov.uk



**Abdul Malik**  
(Aspire)

abdul.malik3@towerhamlets.gov.uk



**Bellal Uddin**  
(Aspire)

bellal.uddin@towerhamlets.gov.uk

## BOW EAST



**Amina Ali**  
(Labour)

amina.ali@towerhamlets.gov.uk



**Rachel Blake**  
(Labour)

cll.rachel.blake@towerhamlets.gov.uk



**Marc Francis**  
(Labour)

cll.marc.francis@towerhamlets.gov.uk  
07973 815272

## BOW WEST



**Asma Begum**  
(Labour)

cll.asmak.begum@towerhamlets.gov.uk  
07946 292712



**Nathalie Bienfait**  
(Green)

nathalie.bienfait@towerhamlets.gov.uk  
07414 154959

## BROMLEY NORTH



**Saif Uddin Khaled**  
(Aspire)

saif.khaled@towerhamlets.gov.uk



**Abdul Mannan**  
(Aspire)

abdul.mannan@towerhamlets.gov.uk  
07956 436642

## BROMLEY SOUTH



**Bodrul Choudhury**  
(Aspire)

bodrul.choudhury@towerhamlets.gov.uk



**Shubo Hussain**  
(Labour)

shubo.hussain@towerhamlets.gov.uk  
07539 225660

## CANARY WHARF



**Saied Ahmed**  
(Aspire)

saied.ahmed@towerhamlets.gov.uk



**Maium Talukdar**  
(Aspire)

maium.talukdar@towerhamlets.gov.uk  
07983 798791

## ISLAND GARDENS



**Mufeedah Bustin**  
(Labour)

mufeedah.bustin@towerhamlets.gov.uk  
07759 905377



**Peter Golds**  
(Conservative)

councillorpetergold@gmail.com  
020 7364 4830

## LANSBURY



**Ohid Ahmed**  
(Aspire)

ohid.ahmed@towerhamlets.gov.uk  
07984 424 913



**Jahed Choudhury**  
(Aspire)

jahed.choudhury@towerhamlets.gov.uk  
07782 259443



**Iqbal Hossain**  
(Aspire)

iqbal.hossain@towerhamlets.gov.uk



Tower Hamlets Council has a system of governance in which the elected mayor, **Lutfur Rahman** (Aspire, right), has personal responsibility and executive powers. Mayor Rahman is responsible for determining and delivering a wide range of policies and priorities. He is advised by his cabinet of councillors and by council officers.



### The members of the Cabinet are:

- Cllr Maium Talukdar, Statutory Deputy Mayor and Cabinet Member for Education and Lifelong Learning
- Cllr Saied Ahmed, Resources and the Cost of Living
- Cllr Kabir Ahmed, Regeneration, Inclusive Development and Housebuilding
- Cllr Abu Talha Choudhury, Safer Communities
- Cllr Kabir Hussain, Environment and the Climate Emergency
- Cllr Gulam Kibria Choudhury, Health, Wellbeing and Social Care
- Cllr Abdul Wahid, Jobs, Skills and Growth
- Cllr Suluk Ahmed, Equalities and Social Inclusion
- Cllr Iqbal Hossain, Culture and Recreation

#### LIMEHOUSE



**James King**  
(Labour)

james.king@towerhamlets.gov.uk  
07736 371160

#### MILE END



**Leelu Ahmed**  
(Labour)

leelu.ahmed@towerhamlets.gov.uk



**Mohammad Chowdhury**  
(Labour)

mohammad.chowdhury@towerhamlets.gov.uk  
07877 471838



**Sabina Khan**  
(Labour)

sabina.khan@towerhamlets.gov.uk

#### POPLAR



**Gulam Kibria Choudhury**  
(Aspire)

gulam.k.choudhury@towerhamlets.gov.uk  
07846 659941

#### SHADWELL



**Ana Miah**  
(Aspire)

ana.miah@towerhamlets.gov.uk



**Harun Miah**  
(Aspire)

harunmiahcllr@outlook.com  
07949 051 295

#### SPITALFIELDS & BANGLATOWN



**Suluk Ahmed**  
(Aspire)

suluk.ahmed@towerhamlets.gov.uk  
07956 830783



**Kabir Hussain**  
(Aspire)

kabir.hussain@towerhamlets.gov.uk  
07828 424124

#### ST DUNSTAN'S



**Maisha Begum**  
(Labour)

maisha.begum@towerhamlets.gov.uk  
07535 288572



**Ayas Miah**  
(Independent)

cllr.ayas.miah@towerhamlets.gov.uk  
07961 566066

#### ST KATHERINE'S & WAPPING



**Amy Lee**  
(Labour)

amy.lee@towerhamlets.gov.uk  
07845 708627



**Abdal Ullah**  
(Labour)

abdal.ullah@towerhamlets.gov.uk  
07956 124264

#### STEPNEY GREEN



**Sabina Akhtar**  
(Labour)

sabina.akhtar@towerhamlets.gov.uk  
07961 792965



**Abdul Wahid**  
(Aspire)

abdul.wahid@towerhamlets.gov.uk  
07383 458289

#### WEAVERS



**Kabir Ahmed**  
(Aspire)

kabir.ahmed2@towerhamlets.gov.uk  
07572 609 549



**Asma Islam**  
(Labour)

asma.islam@towerhamlets.gov.uk  
07538 325176

#### WHITECHAPEL



**Faroque Ahmed**  
(Labour)

faroque.ahmed@towerhamlets.gov.uk  
07956 972328



**Shafi Ahmed**  
(Aspire)

shafi.ahmed@towerhamlets.gov.uk  
07956 959764

**Kamrul Hussain**  
(Aspire)



kamrul.hussain@towerhamlets.gov.uk

# টাওয়ার হ্যামলেটস হোমস্ ফিরে এলো কাউন্সিলের নিয়ন্ত্রণে

HARMONY  
BENGALI & SOMALI NEWS

## Council now manages and maintains council houses – page 10

টাওয়ার হ্যামলেটস হোমস্ (টিএইচএইচ) ১ নভেম্বর থেকে কাউন্সিলের অধীনে চলে এসেছে। এখন থেকে কাউন্সিল মালিকানাধীন বাড়ি-ঘরের ব্যবস্থাপনার পুরো দায়িত্ব কাউন্সিলের। এরমধ্যে রয়েছে মেরামত, রক্ষণাবেক্ষণ, উন্নয়ন, দেখভাল করা, বাগান ও উন্মুক্ত স্থানের পরিচর্যা এবং রেন্ট ও সার্ভিস চার্জ সংগ্রহ।

হাউজিং সার্ভিসেসকে কাউন্সিলের নিয়ন্ত্রণে নিয়ে আসা যাতে টেনেন্ট ও লীজহোল্ডারদের জন্য সহজতর হয়, সেজন্য কাউন্সিল এবং টিএইচএইচ এক সাথে কাজ করেছে। এই স্থানান্তরের কারণে হাউজিং ম্যানেজমেন্ট সার্ভিসের সাথে যোগাযোগের ক্ষেত্রে কোনরূপ পরিবর্তন হয়নি। তাই দয়া করে একই ফোন নম্বার, ইমেইল এড্রেসেস এবং অনলাইন

সার্ভিসেস ব্যবহার করুন। একমাত্র পরিবর্তন হচ্ছে অনলাইন পোর্টালের নাম - এতদিন যেটা ছিলো 'মাইটিএইচএইচ', এখন থেকে সেটার নাম হচ্ছে 'মাইহোম'।

হাউজিং সার্ভিসেসকে পুণরায় কাউন্সিলের সরাসরি নিয়ন্ত্রণে ফিরিয়ে আনার অন্যতম লক্ষ্যগুলো হচ্ছেঃ

- বাসিন্দাদের যা প্রয়োজন তা যেন তারা সহজেই পান, তা নিশ্চিত করতে হাউজিং এবং অন্যান্য কাউন্সিল পরিষেবাগুলোকে একত্রিত করা;
  - আবাসনের মান উন্নয়নে সহায়তা করার জন্য কাউন্সিলে বাসিন্দাদের শক্তিশালী বক্তব্য তুলে ধরা নিশ্চিত করা
  - অগ্নি ও বিস্ফোরণের মতো জটিল বিষয়গুলির কাছাকাছি কাউন্সিলের থাকা নিশ্চিত করা;
  - সর্বোত্তম মূল্যমানের সেবা প্রদান করা।
- কনসালটেশনে অংশগ্রহণকারী ৮৬ শতাংশেরও বেশি ভাড়াটে এবং লীজহোল্ডার হাউজিং ম্যানেজমেন্ট পরিষেবাগুলিকে কাউন্সিলের সরাসরি নিয়ন্ত্রণে ফিরিয়ে আনার ব্যাপারে মত দিয়েছিলেন।

## Join 'Tenants' Voice and share your views – page 10

টাওয়ার হ্যামলেটস কাউন্সিল প্রদত্ত হাউজিং ম্যানেজমেন্ট সার্ভিসেস (আবাসন ব্যবস্থাপনা পরিষেবাগুলি) এর ভবিষ্যত সুসংহত করতে সহায়তা করার জন্য নতুনভাবে গঠিত টেনেন্টস ভয়েস গ্রুপে যোগ দেয়ার জন্য কাউন্সিলের ভাড়াটে ও লিজহোল্ডারদের প্রতি আমন্ত্রণ জানানো হয়েছে। এই টেনেন্টস গ্রুপ আপনার নিজের ক্ষেত্রে, আপনার প্রতিবেশিগণ ও কাউন্সিল মালিকানাধীন বাড়ি-ঘরের ব্যাপারে যে সার্ভিসগুলো সবচেয়ে বেশি প্রভাব ফেলে, সেগুলোকে উপযুক্ত আকার দেয়া, প্রভাব বিস্তার ও পরিচালনার ক্ষেত্রে ভাড়াটেদের শক্তিশালী ভূমিকা রাখার সুযোগ দিবে। আপনি যদি টেনেন্টস ভয়েসে যোগ দিতে চান বা আরও তথ্য জানতে চান, তাহলে ১৫ জানুয়ারী ২০২৪ এর মধ্যে [talk.housingmanagement@towerhamlets.gov.uk](mailto:talk.housingmanagement@towerhamlets.gov.uk) এ ইমেইল করুন।

# কলম্বিয়া রোডে চালু করা হলো নতুন ইয়ুথ সেন্টার



## Council launches new youth centre during youth work week – page 4

‘ইয়াং টাওয়ার হ্যামলেটস’ নামে নতুনভাবে ব্র্যান্ডিং করা কাউন্সিলের ইয়ুথ সার্ভিস ৯ নভেম্বর কলম্বিয়া রোড ইয়ুথ সেন্টার আনুষ্ঠানিকভাবে চালু করেছে। তরুণ যুব বয়সীদের কাজের গুরুত্বকে উদযাপন করতে ন্যাশনাল ইয়ুথ ওয়ার্ক উইক উপলক্ষে এই সেন্টারটির দরোজা খুলে দেয়া হয়।

উদ্বোধনী দিনে তরুণদেরকে দিওয়ালি আর্টস সেশন, কেক সাজানো, গ্রাফিটি শোকেস, পিএসফাইভ সায়েন্স গেম এবং পডকাস্টিং সহ বিনামূল্যের বিভিন্ন ক্রিয়াকলাপে জড়িত হতে উৎসাহিত করা হয়েছিল।

কাউন্সিল ১৩.৭ মিলিয়ন পাউন্ডের তহবিল বিনিয়োগে পুনঃব্র্যান্ড এবং সম্প্রসারণ কর্মসূচির অংশ হিসেবে প্রতিটি ওয়ার্ডে কিশোর-তরুণ বয়সীদের জন্য একটি ‘নিরাপদ স্থান’ গড়ে তুলবে।

ইয়ুথ সার্ভিসের এই বছরের লক্ষ্য হল ‘প্রতিটি জায়গায় একটি নিরাপদ স্থান’, যা বারা জুড়ে সকল তরুণদের জন্য একটি নিরাপদ স্থান দেওয়ার জন্য কাউন্সিলের প্রতিশ্রুতির সাথে সম্পৃক্ত।

কলম্বিয়া রোড ইয়ুথ সেন্টারের উদ্বোধনী অনুষ্ঠানে ডেপুটি মেয়র, কাউন্সিলর মাইয়ুম তালুকদার তরুণদের সাথে নানা কর্মকাণ্ডে যোগ দেন। কয়েকজন ইয়াং মেয়র প্রার্থীর সাথে কথা বলেন।

এসময় ২০২৩ সালের ইয়াং মেয়র, ডেপুটি এবং নতুন প্রার্থীদের কাছ থেকে কিশোর-তরুণরা আগামী ৪ থেকে ১০ ডিসেম্বরের মধ্যে অনুষ্ঠিতব্য ইয়াং মেয়র নির্বাচন এবং ভোটের গুরুত্ব সম্পর্কে শুনেন।

নির্বাধী মেয়র লুৎফুর রহমান বলেন, “কলম্বিয়া রোড যুব কেন্দ্রের উদ্বোধন আমাদের

প্রতিটি তরুণদের জন্য তাদের জীবনের সম্ভাবনা উন্নত করার জন্য চমৎকার সুযোগ এবং নিরাপদ স্থান প্রদানের প্রতি আমাদের প্রতিশ্রুতি প্রদর্শন করে। ইয়ুথ সার্ভিসের একজন উপকারভোগী হিসাবে, আমি নিশ্চিতভাবে ইয়ুথ ওয়ার্কার (যুব কর্মীদের) মূল্য বুঝতে পারি কারণ তারা আমার কিশোর বয়সে আমাকে গাইড করেছিল, সাহায্য করেছিল এবং সমর্থন করেছিল।

তিনি বলেন, আমরা তরুণদের জন্য বিনিয়োগ করতে প্রতিশ্রুতিবদ্ধ এবং ‘ইয়াং টাওয়ার হ্যামলেটস’, প্রাথমিক ও মাধ্যমিক শিক্ষার্থীদের জন্য বিনামূল্যে স্কুলের খাবার, এবং শিক্ষা রক্ষণাবেক্ষণ ভাতা ও ইউনিভার্সিটি বার্সারিগুলি পুনঃপ্রবর্তনের জন্য ১৯ মিলিয়ন পাউন্ড অর্থায়ন করেছি।”

# জলবায়ু পরিবর্তন মোকাবেলা বিষয়ক সেমিনারে অংশ নিলো শিক্ষার্থীরা

## Pupils explore how they can help tackle climate change



Pupils from five schools across the borough took part in the conference

জলবায়ু পরিবর্তন মোকাবেলায় তাদের ধারণা দেওয়ার জন্য গত ১৩ নভেম্বর টাওয়ার হ্যামলেটস টাউন হলে একটি বিশেষ ‘অন্তঃবিশ্বাস সপ্তাহ’ সম্মেলনে ১০০ টিরও বেশি স্কুল শিক্ষার্থী অংশ নিয়েছিলো।

ইন্টারফেইথ সপ্তাহের শুরুতে গ্লোবাল লার্নিং লন্ডন কর্তৃক আয়োজিত, ‘কমিউনিটিস অফ হোপ কনফারেন্স’ এ এটাই দেখানোর লক্ষ্য ছিল যে কীভাবে বিশ্বাস সামাজিক পরিবর্তন আনতে এবং অন্যায়কে চ্যালেঞ্জ করার ক্ষেত্রে গুরুত্বপূর্ণ ভূমিকা পালন করতে পারে।

মালবেরি স্কুল ফর গার্লস, ক্যানারি ওয়ার্ক কলেজ, জর্জ গ্রিনস স্কুল, স্টেপনি অল সেন্টস এবং ওকল্যান্ডস স্কুল সহ বারার পাঁচটি মাধ্যমিক বিদ্যালয় থেকে আসা শিক্ষার্থীরা বিভিন্ন ধর্মের অতিথি বক্তাদের একটি প্যানেলে যোগ দিয়েছিল।

প্যানেলে, একজন মুসলিম মৌমাছি পালনকারী, একজন বৌদ্ধ নাট্যকার এবং কোয়েকার ধর্মের একজন প্রাক্তন দর্শনের লেকচারার অন্তর্ভুক্ত ছিলেন। তাদের আলোচনা শিক্ষার্থীদের চিন্তা করতে উৎসাহিত করেছিল

যে তারা কীভাবে সামাজিক পরিবর্তনে অবদান রাখতে পারে এবং প্রভাব ফেলতে তাদের অন্য দক্ষতা ব্যবহার করতে পারে।

টাওয়ার হ্যামলেটসের নির্বাধী মেয়র লুৎফুর রহমান বলেন, “জলবায়ু জরুরী পরিস্থিতি মোকাবেলা করা শুধুমাত্র একটি বৈশ্বিক সমস্যা নয় - এটি একটি স্থানীয় সমস্যাও বটে। আমরা আমাদের ঘরে, আমাদের রাস্তায় এবং আমাদের ভবনগুলোতে জলবায়ু পরিবর্তনের বিরুদ্ধে লড়াই শুরু করেছি। আমরা জলবায়ু ও প্রকৃতি জরুরী অবস্থা ঘোষণা করেছি এবং ২০২৫ সালের মধ্যে কার্বন নিরপেক্ষ কাউন্সিল হতে প্রতিশ্রুতিবদ্ধ।”

ডেপুটি মেয়র এবং শিক্ষা বিষয়ক কেবিনেট মেম্বর কাউন্সিলর মাইয়ুম তালুকদার সম্মেলনের উদ্বোধন করেন। এসময় তিনি বলেন, “জলবায়ু পরিবর্তন মোকাবেলা করা একটি বিশাল সমস্যা এবং শুধুমাত্র একসাথে কাজ করলেই আমরা টেকসই পরিবর্তন আনতে পারি। আমি আশা করি আমাদের তরুণরা এগিয়ে যেতে এবং একটি সবুজ ও নিরাপদ পৃথিবী তৈরি করতে অনুপ্রাণিত হবে।”

# এই শীতে নিজের যত্ন নিন

## Take care of yourself this winter – page 6

শীতের মওসুম প্রায় শুরু হতে চলেছে। তাই, এ সময়ে আমাদের নিজেদের যত্ন নেয়া এবং সেইসাথে প্রতিবেশীদের দেখভাল করার বিষয়টি অবশ্যই নিশ্চিত করতে হবে।

### উষ্ণ রাখা

শীতকালে নিজেকে উষ্ণ এবং সুস্থ রাখা সর্দি, কোভিড-১৯, ফ্লু এবং আরও গুরুতর স্বাস্থ্য সমস্যা প্রতিরোধে সাহায্য করতে পারে।

আপনি সঠিক সময়ে সঠিক যত্ন লাভ করছেন তা নিশ্চিত করার মানে হলে ইমার্জেন্সি সার্ভিসের (জরুরী পরিষেবা) ওপর চাপ কমাতে সাহায্য করবে। আপনার যদি জরুরী চিকিৎসার প্রয়োজন হয়, কিন্তু এটি প্রাণঘাতী না হয়, তাহলে ১১১. এনএইচএস.ইউকে - তে যান অথবা ১১১ এ কল করুন। জরুরী প্রয়োজনে ডাক্তারের অ্যাপয়েন্টমেন্ট সন্ধ্যায়, সপ্তাহান্তে এবং যেকোন ছুটি সহ সপ্তাহের সাত দিনই পাওয়া যায়। বুক করার জন্য আপনার জিপি প্র্যাক্টিসে অথবা এনএইচএস ১১১ এ কল করুন।

আপনার স্থানীয় ফার্মাসিস্ট ওষুধের পাশাপাশি পরামর্শও দিতে পারেন। অনেক ফার্মেসি আবেক রাত অবধি এবং সপ্তাহান্তে খোলা থাকে এবং পেশাদারের সাথে দেখা করার জন্য আপনার অ্যাপয়েন্টমেন্টের প্রয়োজন নেই। কিছু কিছু ফার্মেসী বিনামূল্যে ডেলিভারি সার্ভিসও দিয়ে থাকে। তাই আপনার স্থানীয় ফার্মেসির সাথে যোগাযোগ করুন।

### উষ্ণ থাকুন

আপনার ঘরকে উষ্ণ রাখা এবং সক্রিয় থাকার ও বেশ কিছু গরম খাবার ও পানীয় পান করে নিজেকে উষ্ণ রাখতে তুলবেন না। আপনি যদি

আপনার ঘর গরম করার জন্য আর্থিকভাবে চাপে থাকেন, তাহলে আইডিয়া স্টোর এবং কমিউনিটি সেন্টারগুলোতে বেশ কয়েকটি ওয়ার্ম হাব খোলা রয়েছে, সেখানে চলে আসুন। এসব উষ্ণ কেন্দ্রগুলোতে গরম পানীয় এবং ওয়াইফাই সুবিধা দেওয়া হয়। আরো জানতে ভিজিট করুনঃ [www.towerhamlets.gov.uk/costofliving](http://www.towerhamlets.gov.uk/costofliving)

### ভাল খাবার গ্রহণ

আপনি যদি নিজের বা আপনার পরিবারের জন্য খাবারের সংস্থান করতে অর্থনৈতিক সংকটের সাথে সংগ্রাম করে থাকেন তবে টাওয়ার হ্যামলেটসে অনেকগুলি খাদ্য সহায়তা সংস্থা রয়েছে যারা আপনাকে সাহায্য করতে পারে। কমিউনিটি আলমারিতে প্রয়োজনীয় জিনিসপত্র, ব্যক্তিগত স্বাস্থ্যসুরক্ষা আইটেম, ন্যাপি, বেবি ওয়াইপস এবং দুধের স্টক থাকবে। আমাদের শিশু এবং পরিবার কেন্দ্রের কর্মীরা সেই ব্যক্তি এবং পরিবারগুলিকে সহায়তা প্রদান করতে সক্ষম হবেন যাদের সহায়তার প্রয়োজন রয়েছে।

আরও জানতে ভিজিট করুনঃ [www.towerhamlets.gov.uk/foodbanks](http://www.towerhamlets.gov.uk/foodbanks)

### টিকা নিন

শীতের আগেই আপনার ফ্লু এবং কোভিড-১৯ টিকা লাভ করুন। আপনার বয়স ৬৫ বা তার বেশি হলে, গর্ভবতী বা দীর্ঘমেয়াদী স্বাস্থ্যগত অবস্থা থাকলে উভয় ভ্যাকসিনই পাবেন বিনামূল্যে। আপনার জিপির সাথে কথা বলুন।

শীতে ভালো থাকার আরও টিপসের জন্য ভিজিট করুনঃ [www.towerhamlets.gov.uk/keepwellinwinter](http://www.towerhamlets.gov.uk/keepwellinwinter)



# মাদকের অপরাধে ১৪ জন দোষী সাব্যস্ত, বিভিন্ন মেয়াদে দণ্ড

## 14 convicted for drug offences as part of police and council op – page 28

একটি জটিল অভিযানের পর টাওয়ার হ্যামলেটসে মাদক সংক্রান্ত অপরাধে জড়িত থাকার দায়ে ১৪ জনকে দোষী সাব্যস্ত করা হয়েছে।

অপারেশন কন্টিনিউম নামের মাদক বিরোধী চলমান অভিযানের অংশ হিসেবে গোয়েন্দা তথ্যের ভিত্তিতে টাওয়ার হ্যামলেটসে মাদক ব্যবসা, মাদকের ব্যবহার এবং সংশ্লিষ্ট অপরাধের বিরুদ্ধে বিশেষ এই অভিযানটি কাউন্সিল ও পুলিশের যৌথ নেতৃত্বে পরিচালিত হয়।

সাম্প্রতিক তদন্তের ফলস্বরূপ, স্ট্রেরাস্ট্রেক ক্রাউন কোর্টে মাদক অপরাধের জন্য যে ১৪ জনকে দোষী সাব্যস্ত করে বিভিন্ন মেয়াদে জেলদণ্ড দেয়া হয়েছে, তারা হলো: আবু তাহের, অ্যারো রোড, ইও - ৯ বছর জেলদণ্ড; রিয়াজ হুসেন, চেরিউড ফ্লাজ, ইও - ৮ বছর জেল; মহিদ আলী, চিপিং রো,

সিএমও - ৫ বছর, ৩ মাসের জেলদণ্ড; সেন্ট লিওনার্ডস স্ট্রিটের (ইও) নাজির হোসেন - পাঁচ বছর, আট মাস; ট্রুম্যান ওয়াক এর (ইও) মোহাম্মদ মিনানুর রহমান - ছয় বছরের জেলদণ্ড; আরএম ৮ এর লংব্রিজ রোডের বাসিন্দা মোহাম্মদ শাহ রহমান - তিন বছর সাত মাস; বেন জনসন রোডের (ই১) আলী আকবর হোসেন - দুই বছর; আরএম ৯ এর সিঙ্গেলটন রোডের মোহাম্মদ হাসান - ৩ বছর ৮ মাস, ইও এর বো রোডের নাইম সামি - ৫ বছর ৮ মাস; অ্যালেন রোডের (ই ৩) শুহেব মিয়া - ২ বছর ৮ মাস এবং ড্রাইভিং এর জন্য ২ বছর ৬ মাসের জন্য অযোগ্য; ই ও এর বলিংগার পয়েন্টের মোহাম্মদ ইমরান আলী - ২০ সপ্তাহের কারাদণ্ড; ই১৫ এর ওলফি গার্ডেস এর সৈয়দ আহমেদ - ১৫ মাস, যা ২ বছরের জন্য সাসপেন্ডেড;

ই১৪ এর পপলার হাই স্ট্রিটের আবদুল্লাহ আল-হুদা - ২৩ মাসের জেলদণ্ড, যা ২৪ মাসের জন্য স্থগিত; আইজি১১ এর ক্রানলি গার্ডেস এর মাহিদুর রহমান - দুই বছর, ২৪ মাসের জন্য স্থগিত দণ্ড।

কমিউনিটি সেফটি বিষয়ক কেবিনেট মেম্বর কাউন্সিলর আবু তালহা চৌধুরী বলেছেন: “অপারেশন কন্টিনিউম একটি অত্যন্ত সফল উদ্যোগ হিসাবে প্রমাণিত এবং মধ্য পূর্ব বিসিইউ-এর মধ্যে মাদকের সরবরাহ দমনে গুরুত্বপূর্ণ। মাদকগুলি সহিংস অপরাধের উচ্চ অনুপাতের সাথে অঙ্গাঙ্গীভাবে জড়িত, এবং তাই আমরা অপরাধীদের টার্গেট করা চালিয়ে যাব, পুলিশের সহকর্মীদের সাথে যৌথভাবে কাজ করে তাদের বিচারের আওতায় আনতে আমরা বন্ধপরিকর।”



## বিনামূল্যে ল্যাপটপ পেলো শিশু শিক্ষার্থীরা Free laptops for children – page 19

বারায় ডিজিটাল বিভাজন অর্থাৎ প্রযুক্তিগত বৈষম্য মোকাবেলা করতে বিভিন্ন সেक्टरের সমন্বয়ে গঠিত কানেস্টিং কমিউনিটি প্রজেক্টের কাজের সমর্থনে অসহকর্মীদের জন্য ৫০টি ল্যাপটপ দান করা হয়েছে।

লোকেদের নিরাপদে, আত্মবিশ্বাসের সাথে এবং শাস্রয়ী মূল্যে অনলাইনে সেবা পেতে সহায়তা করতে বার্ষিক জাতীয় প্রচারাভিযান ‘গেট অনলাইন সপ্তাহ’ (১৬ - ২২ অক্টোবর) অংশ হিসেবে সেন্ট

লুক’স প্রাইমারি স্কুলের ছাত্ররা তাদের ল্যাপটপগুলি পেয়েছে। এখন পর্যন্ত, এই প্রকল্পের মাধ্যমে ২১টি স্কুলের পরিবারগুলির মধ্যে ৪৭৯টি ডিজিটাল ডিভাইস বিতরণ করা হয়েছে।

## শুধু ‘হ্যালো’ বলুন এবং কমিউনিটিকে সহযোগিতা করুন Just Say ‘Hello’ and support your community – page 6

পুরানো কোন বন্ধুর সাথে চ্যাট করা কিংবা আপনার বয়স্ক প্রতিবেশীর খোঁজ খবর নেয়া তাদের সুস্থতার ক্ষেত্রে বড় পার্থক্য করতে পারে। এমনকি ছোটখাটো আকার-ইঙ্গিত কারো জন্য একটি অর্থপূর্ণ সংযোগ তৈরি করতে পারে, বিশেষ করে যদি তারা একাকী বা বিচ্ছিন্ন বোধ করে থাকেন।

‘হ্যালো’ বলার জন্য সময় বের করে কথোপকথনকে উৎসাহিত করা এবং একে অপরের সাথে সংযোগ স্থাপনের বিষয়ে “জাস্ট সে হ্যালো” একটি নতুন স্থানীয় প্রচারাভিযান। টাওয়ার হ্যামলেটস জুড়ে অংশীদার, সংস্থা বা কমিউনিটি সদস্যদের “জাস্ট সে হ্যালো” সংস্থানগুলি (রিসোর্সেস) ব্যবহার করার জন্য আমন্ত্রণ জানানো হচ্ছে। নিজস্ব উপায়ে - স্থানীয় কমিউনিটি সেন্টারে একটি ইভেন্টে যোগদান করা হোক না কেন, আপনার প্রতিবেশীদের সাথে একটি ‘পপ আপ’ কফি শপের আয়োজন করা কিংবা একটি নতুন ক্লাসে পড়া হোক, নতুন সংযোগ গড়ে তোলার অনেক উপায় রয়েছে।

আপনি যদি বিচ্ছিন্ন বোধ করেন এবং মানসিক স্বাস্থ্য সহায়তার প্রয়োজন হয়, তাহলে স্থানীয়ভাবে বেশ কিছু সার্ভিস রয়েছে যা আপনাকে সহায়তা করতে পারে: টাওয়ার হ্যামলেটস টকিং থেরাপি বিভিন্ন ধরনের মনস্তাত্ত্বিক থেরাপি এবং কাউন্সেলিং পরিষেবা প্রদান করে। কল করুন: ০২০ ৮৪৭৫ ৮০৮০ মাইন্ড ইন টাওয়ার হ্যামলেটস পরামর্শ এবং সহায়তা প্রদান করে, সেইসাথে বাসিন্দাদের জন্য বিনামূল্যে কাউন্সেলিং প্রদান করে। পরামর্শের জন্য কল করুন: ০২০ ৭৫১০ ৪২৪৭/৪২৪৮

আপনি বিষন্নতা বোধ করছেন বা আপনার মানসিক স্বাস্থ্য নিয়ে লড়াই করছেন, তাহলে আপনি টাওয়ার হ্যামলেটস মেন্টাল হেলথ ক্রাইসিস সাপোর্ট নম্বর ০৮০০ ০৭৩ ০০০৩ এ দিনের যেকোন সময় কল করতে পারেন। বিস্তারিত তথ্য জানতে হলে ভিজিট করুন: [www.towerhamlets.gov.uk/mentalhealth](http://www.towerhamlets.gov.uk/mentalhealth)

## মনোনীত করুন আপনার সিভিক হিরোদের Time to nominate your civic heroes – page 5

বরো জুড়ে মানুষের জীবনকে উন্নত করার জন্য যারা তাদের সময় এবং প্রচেষ্টাকে উৎসর্গ করে যাচ্ছেন, তাদের সম্মান জানানোর বার্ষিক সিভিক অ্যাওয়ার্ডের জন্য মনোনয়ন জমা দেয়ার কার্যক্রম এখন উন্মুক্ত।

- পাঁচটি বিভাগে মনোনয়ন জমা দেয়া যাবে:
- কমিউনিটির জন্য অসামান্য সেবা প্রদান
- খেলাধুলা, শৈল্পিক বা সাংস্কৃতিক অর্জনের মাধ্যমে বারার জন্য গৌরব বয়ে এনেছেন
- স্থানীয় জনগণের জন্য যা প্রদান করা হয় তার চেয়ে বেশি সেবা প্রদান করে তাদের জীবনযাত্রার মান উন্নত করা
- ব্যবসায় এবং কমিউনিটির সম্পৃক্ততায় সাফল্যের মাধ্যমে কমিউনিটিকে উপকৃত করা
- অথবা, ২৫ বছরের কম বয়সী একজন তরুণ অর্জনকারী যার কৃতিত্বগুলি অসাধারণ এবং স্বীকৃত হওয়া উচিত।

সিভিক এওয়ার্ড লাভের যোগ্যতা অর্জনের জন্য মনোনীতদের অবশ্যই বারাতে বসবাস, কাজ



বা অধ্যয়ন করতে হবে। জানুয়ারী ২০২৪ এর মধ্যে [www.towerhamlets.gov.uk/civicawards](http://www.towerhamlets.gov.uk/civicawards) -এ আপনার মনোনয়ন জমা দিন। কাউন্সিলের স্পিকারের সভাপতিত্বে এবং কমিউনিটির প্রতিনিধিদের নিয়ে গঠিত একটি প্যানেল কর্তৃক বিজয়ীদের সম্মাননা ফ্রেস্ট প্রদান করা হবে।



## Tower Hamlets in bloom scoops award

দ্যা রয়্যাল হার্টিকালচারাল সোসাইটি আয়োজিত যুক্তরাজ্যের সর্ববৃহৎ কমিউনিটি গার্ডেনিং প্রতিযোগিতা ‘ব্রিটেন ইন ব্লুম কম্পিটিশন’ এর সিটি ক্যাটাগরিতে সিলভার গ্লিট এওয়ার্ড জিতেছে টাওয়ার হ্যামলেটস কাউন্সিলের পার্কস এবং ওপেন স্পেস টিম। এছাড়াও কমিউনিটির সম্পৃক্ততার ক্ষেত্রে কাউন্সিলের উদ্ভাবনী প্রকল্প স্বীকৃতি লাভ করেছে এবং আমরা সাসটেইনেবল গার্ডেনিং এর জন্যও এওয়ার্ড লাভ করেছি।

## বারার ভবিষ্যত উন্নয়ন কর্মসূচি সম্পর্কে আপনার মতামত তুলে ধরুন Have your say on future developments – page 25

টাওয়ার হ্যামলেটসের ভবিষ্যত উন্নয়নের জন্য নতুন লকাল প্ল্যান বা স্থানীয় পরিকল্পনা চূড়ান্ত করতে জনসাধারণের সাথে আলোচনার জন্য ৬ সপ্তাহের কনসালটেশন কার্যক্রম ১৮ ডিসেম্বর পর্যন্ত চলবে।

লকাল প্ল্যান হিসেবে পরিচিত স্থানীয় উন্নয়ন পরিকল্পনায় এফোর্ডেবল হাউজিং অর্থাৎ শাস্রয়ী মূল্যের আবাসনের নতুন প্রয়োজনীয়তার পাশাপাশি সবুজ স্থানের উন্নতি, ছোট ব্যবসাকে সমর্থন করা এবং

লিঙ্গ-অন্তর্ভুক্তিমূলক উন্নয়নকে উৎসাহিত করার মতো বিষয়গুলো খসড়া নীতির একটি রূপরেখায় তুলে ধরা হয়েছে।

কাউন্সিলের সবচেয়ে গুরুত্বপূর্ণ পরিকল্পনা নথি হিসাবে, স্থানীয় পরিকল্পনাটি বারায় পরিকল্পনার আবেদনের (প্ল্যানিং এপ্লিকেশন) ব্যাপারে সিদ্ধান্ত নেয়ার ক্ষেত্রেও ব্যবহৃত হয়। এর মানে হল যে কেউ যদি একটি নতুন বিল্ডিং তৈরি করতে বা এর ব্যবহার পরিবর্তন করতে চায়, তবে তাদের নিশ্চিত করা উচিত যে এটি স্থানীয় পরিকল্পনার

নীতিগুলি যথাযথভাবে অনুসরণ করছে।

খসড়া পরিকল্পনায় নতুন আবাসন নীতিগুলির মধ্যে একটি প্রস্তাব করা হয়েছে যে উন্নয়ন সাইটগুলিকে অবশ্যই শাস্রয়ী মূল্যের অর্থাৎ সামর্থ্যবান ভাড়ার জন্য ন্যূনতম ৪০ শতাংশ নতুন বাড়ির প্রস্তাব করতে হবে, যার মধ্যে ৮৫ শতাংশ হতে হবে সামাজিক ভাড়ায় এবং ১৫ শতাংশ মধ্যবর্তী আবাসন হিসাবে।

গাঙ্গারক্রাউডিং অর্থাৎ গাঙ্গারক্রাউডিং পরিবেশে বসবাস সমস্যা মোকাবেলা করার

জন্য, কাউন্সিল বলেছে যে সামাজিক ভাড়ার ৬৫ শতাংশ ফ্ল্যাট কমপক্ষে তিন বা ততোধিক বেড ইউনিট হওয়া অত্যাবশ্যিক।

আপনার মতামত শেয়ার করতে ভিজিট করুন: [www.towerhamlets.gov.uk/localplan](http://www.towerhamlets.gov.uk/localplan) কিংবা লিখিত মতামত ডাকযোগে পাঠাতে পারেন - স্ট্র্যাটেজিক প্ল্যানিং টিম, টাওয়ার হ্যামলেটস টাউন হল, ১৬০ হোয়াইটচ্যাপেল রোড, লন্ডন ই১ ১বিজে।

# Goobaha diiran ayaa soo noqda si ay kuu caawiyaan inta lagu jiro jiilaalka qabow

## HARMONY SOMALI NEWS

Nadaamka goobaha diiran ayaa soo laaban doona jiilaalkan si loo siiyo dadka deegaanka gacan caawin.

Xarumaha diiran waxay ku salaysnaan doonaan Bakhaarradayada Fikradaha iyo Maktabadaha Magaalada Cubitt iyo Bethnal Cagaaran.

Sannadkii hore, in ka badan 22,000 oo booqasho ayaa laga diiwaangeliyay lixda goobood ee diirran halkaas oo shaqaaluhu ay ku soo kordhiyeen boqollaal koob oo shaah ah, kafee, iyo cunto fudud oo caafimaad leh maalin kasta.

Xarumo diirran ayaa loo adeegsaday golayaasha UK oo dhan si ay u caawiyaan kuwa ay saamaysay

kor u kaca qiimaha noloshu si ay u helaan deegaan diiran, badbaado iyo raaxo leh xilliyada cimilo aad u qabow.

Waxa kale oo jira mutadawiciin ku sugan xarumaha diiran si ay talo iyo calaamad u siiyaan dadka deggan adeegyada.

Hubsyada diiran ee Idea Stores Bow, Crisp Street, Watney Market iyo Whitechapel waxay furan yihiin 10am ilaa 12 duhurnimo iyo 4pm ilaa 5pm Isniinta ilaa Sabtida.

Warm Hubs ee ku yaal Cubitt Town iyo maktabadaha Bethnal Green waxay furan yihiin Isniinta ilaa Khamiista iyo Sabtida 10.30 subaxnimo ilaa 12.30 galabnimo iyo 4 galabnimo ilaa 5 galabnimo.

Booqo [towerhamlets.gov.uk/warmhubs](http://towerhamlets.gov.uk/warmhubs)



## Koonsilku hadda waxa uu maamulaa oo ilaaliyaa aqallada golaha



idii Noofambar, Golaha Tower Hamlets waxa uu masuul ka ahaa maaraynta iyo dayactirka

dhammaan guryaha dawladda hoose, kuwaas oo ay hore u maamuli jirtay Tower Hamlets Homes (THH).

Tan waxaa ka mid ah dayactirka, dayactirka, hagaajinta, daryeelka, beerashada, iyo ururinta kharashka kirada iyo adeegga.

Golaha iyo THH waxay si dhow uga wada shaqeeyeen sidii loo hubin lahaa kala guurka aan kala go'a lahayn ee kiraystayaasha iyo kiraystayaasha.

Ma jiraan wax isbeddel ah oo ku yimid habka ay dadka deggan

ula xiriiraan adeegyada maaraynta guryeynta.

Fadlan sii wad isticmaalka isla lambarka taleefanka, ciwaannada iimaylka iyo adeegyada khadka.

Kaliya isbeddelku waa magaca bogga internetka ee MyTHH oo hadda loogu yeero MyHome.

Kiraystayaasha golaha iyo kiraystayaasha waxa lagu martiqaadayaa inay ku biiraan kooxda codka kiraystayaasha cusub si ay gacan uga geystaan qaabaynta mustaqbalka adeegyada maaraynta guryeynta ee ay

bixiso golaha Tower Hamlets.

Codka Kiraystayaasha waxa ay ku siinaysaa fursad aad ku qaabayso, saamayn ku yeelato oo aad maamusho adeegyada muhiimka u ah adiga, deriskaaga iyo guriga golahaaga.

Haddii aad rabto inaad ku biirto Codka Kiraystaha ama macluumaad dheeraad ah, fadlan iimayl u dir [housingmanagement@towerhamlets.gov.uk](mailto:housingmanagement@towerhamlets.gov.uk) ugu dambayn 15 Janaayo 2024.

## Aragtidaada ka dhiibo horumarka mustaqbalka ee Tower Hamlets

Wadatashiga Qorshaha Cusub ee Golaha Tower Hamlets waxa uu socdaa ilaa 18ka Diseembar.

Qorshuhu wuxuu qeexayaa shuruudaha cusub ee guryaha la awoodi karo iyo sidoo kale siyaasad qabyo ah oo ku saabsan mawduucyo

ay ka mid yihiin hagaajinta goobaha cagaaran, taageerida ganacsiyada yaryar, iyo dhiirigelinta horumarinta jinsiga oo loo dhan yahay.

Maadaama uu yahay dukumeentiga qorsheynta ee ugu muhiimsan koonsilka, Qorshaha

Maxaliga ah waxaa loo isticmaalaa in lagu hago go'aannada ku saabsan codsiyada qorsheynta ee degmada.

Qorshaha ayaa lagu wadaa in si rasmi ah loo ansixiyo jiilaalka 2025.

Si aad ula wadaagto aragtidaada, booqo [www.towerhamlets.gov.uk/](http://www.towerhamlets.gov.uk/)

localplan, ama u qor Kooxda Qorshaynta Istaraatiijiga ah, Tower Hamlets Town Hall, 160 Whitechapel Road, London, E1 1BJ si aad fikradaada u dhiibto.



## USEFUL INFORMATION SERVICES AND CONTACTS

### Advice

#### Account 3 (welfare and debt advice)

3 Birkbeck Street, E2.  
020 7739 7720  
www.account3.org.uk

#### Age UK East London

82 Russia Lane, E2.  
Caxton Hall, Caxton  
Grove, E3.  
Royal London Hospital  
14F Wards.  
info@ageukeastlondon.  
org.uk  
www.ageuk.org.uk/  
eastlondon  
020 8981 7124

#### Bromley by Bow Centre

St Leonard's Street, E3.  
020 8709 9700

#### Carers Centre Tower Hamlets

21 Brayford Square, E1  
OSG  
enquiries@ccth.org.uk  
www.ccth.org.uk  
020 7790 1765

#### Citizens Advice Bureau

32 Greatorex Street, E1.  
020 7247 1050  
towerhamlets@eastend-  
cab.org.uk  
www.eastendcab.org.uk

#### Island Advice Centre

Island House, Roserton  
Street, Isle of Dogs, E14.  
020 7987 9379  
www.island-advice.org.uk

#### Legal Advice Centre

University House,  
104 Roman Road, E2.  
020 8980 4205  
www.legaladvicecentre.  
london

#### Limehouse Project

789 Commercial Road,  
Unit 2, St Anne Street, E14.  
020 7538 0075  
www.limehouseproject.  
org.uk

#### Praxis (New Residents) Immigration, benefits and general advice

Pott Street, E2.  
General Helpline:  
020 7729 7985  
Immigration advice:  
020 7749 7608  
www.praxis.org.uk

#### Tower Hamlets Community Advice Network

thcan@island-advice.org.  
uk  
www.thcan.org.uk

#### Tower Hamlets Law Centre

Unit 1, St Anne's Street,  
E14. 020 7538 4909  
www.thlc.co.uk

### Careers

#### Adult education services

Shadwell Centre,  
455 The Highway, E1.  
020 7364 5665

#### WorkPath

Employment and Skills  
Centre, 55 Upper Bank  
Street, E14. 020 7364 3727  
workpath@towerhamlets.  
gov.uk

#### Young WorkPath/Tower Hamlets Careers Service

Employment and Skills  
Centre, 55 Upper Bank  
Street, E14.  
youngworkpath@  
towerhamlets.gov.uk

### Council

#### Town Hall

160 Whitechapel Road,  
London, E1 1BJ.  
www.towerhamlets.gov.uk  
General enquiries  
020 7364 5000

### Debt

#### Fair Money Advice

18 Ashwin Street, E8.  
020 3475 8811  
www.fairfinance.org.uk

#### Island Advice Centre

Island House, Roserton  
Street Isle of Dogs, E14.  
020 7987 9379  
www.island-advice.org.uk

#### Toynbee Hall Advice Service

28 Commercial Street, E1.  
020 7392 2953  
advice@toynbeehall.org.  
uk  
www.toynbeehall.org.uk

### Health & wellbeing

#### Alzheimer's Society

Robinson Centre, Mile  
End Hospital, Bancroft  
Road, E1.  
020 8121 5626

#### BYM Bangladesh Youth Movement Women's Centre of Excellence

Whitechapel Centre, Units  
1 & 2, Myrdle Street, E1.  
020 7377 8668  
www.bym.org.uk

#### Covid vaccine helpline

Tower Hamlets Council  
has launched a Covid-19  
vaccine helpline, on  
020 7464 3030, to support  
residents who are eligible  
for vaccination to book  
their appointment.

#### East London Parkinson's Support Group

hello@parkinsons.org.uk  
0808 800 0303

#### Free home fire safety advice

08000 284428

#### Health hotline

020 7364 5016

#### Healthwatch Tower Hamlets

Mile End Hospital, Ban-  
croft Road, E1.  
0800 145 5343  
info@healthwatchtower  
hamlets.co.uk  
www.healthwatchtower  
hamlets.co.uk

#### LinkAge Plus

Toynbee Hall, Commercial  
Street, E1.  
020 7392 2913

#### Reset

Tower Hamlets Drug and  
Alcohol Service  
183 Whitechapel Road, E1.  
020 3889 9510  
reset.towerhamlets@  
cgl.org.uk

#### Safe East (under-19s)

compass.towerhamlets  
yphws@nhs.net  
020 3954 0091

#### Stop Smoking services

www.quitrightth.org  
020 7882 8230

#### Tower Hamlets Advocacy Real

020 7001 2170  
hello@real.org.uk

### Housing

#### Choice-based lettings

020 7364 2826

#### Homeless service

020 7364 7474  
Out of hours  
020 7364 4079

#### Homeseekers

www.thhs.org.uk

#### Housing advice

020 7364 3558

#### Repairs

0800 376 1637 ext 1

#### Tower Hamlets Homes

020 7364 5015

### Idea Stores and libraries

#### Bow

Gladstone Place, E3.

#### Canary Wharf

Churchill Place, E14.

#### Chrisp Street

Vesey Path, E14.

#### Whitechapel

321 Whitechapel Road, E1.

#### Local History Library and Archives

277 Bancroft Road, E1  
localhistory@  
towerhamlets.gov.uk  
Visit www.ideastore.  
co.uk/home

### Leisure centres

#### John Orwell Sports Centre

Tench Street, Wapping, E1.  
020 7488 9421

#### Mile End Park Leisure

Centre and Stadium  
190 Burdett Road, E3.  
020 8709 4420

#### Poplar Baths

170 East India Dock Road,  
E14. 020 3795 0599

#### St George's Leisure Centre

221 The Highway, Wap-  
ping E1. 020 7709 9714

#### Tiller Leisure Centre

Tiller Road, Isle of Dogs  
E14. 020 7987 5211

#### Whitechapel Sports Centre

55 Durward Street, E1.  
020 7247 7538

#### York Hall Leisure Centre

5-15 Old Ford Road, E2.  
020 8980 2243

For the latest information  
and updates, including  
details of opening hours or  
temporary closures, visit  
[www.towerhamlets.gov.uk](http://www.towerhamlets.gov.uk)  
or [www.better.org.uk](http://www.better.org.uk)

### Parent & child

#### Family Information Service

30 Greatorex Street, E1.  
fis@towerhamlets.gov.uk  
020 7364 6495

#### Multi-Agency Safeguarding Hub (MASH)

If a child is at risk of harm:  
020 7364 5006 (option  
3, open Mon to Fri, 9am -  
5pm)  
020 7364 4079 (out of  
hours emergency duty  
team)

#### Tower Hamlets National Childbirth Trust

0300 330 0700  
www.nct.org.uk

### Report it

#### Anti-fraud (housing and tenancy related fraud)

0800 528 0294

#### Black Women's Health and Family Support

020 8980 3503

#### Childline

0800 1111

#### Domestic Violence Team

0800 279 5434

#### Environmental Protection (Noise) Team

020 7364 5000

#### Haven Whitechapel (sexual assault referral centre)

020 3299 6900 /  
020 3299 1599

#### Karma Nirvana (honour-based abuse helpline)

0800 5999 247

#### Men's Advice Helpline

0808 8010 327

#### National LGBT domestic abuse helpline (Galop)

0800 999 5428 /  
0300 999 5428

#### Non-emergency crimes 101 Textphone

18001 101

#### NSPCC Child Protection Helpline

0800 800 5000

#### Respect (for perpetrators)

0808 802 4040

#### Rights of Women

020 7251 6577

#### Samaritans

116 123

#### Shelter

0808 800 4444

#### Tower Hamlets Mediation Service (free service for council tenants and leaseholders)

020 7364 7474

#### Victim Support Tower Hamlets

0808 168 9291 /  
0808 168 9111

## Sign-up to Tower Hamlets news

Find out what's on,  
get Tower Hamlets  
news, take part in  
competitions and  
receive local offers  
straight into your  
inbox!

Visit [www.towerhamlets.gov.uk/signup](http://www.towerhamlets.gov.uk/signup)

elliott leigh

20 YEARS  
of Guaranteed Rents

LIMITED TIME OFFER

£1,000

CASHBACK\*

FOR NEW LANDLORD SIGNUPS

- Flexible 1-10 yr leases
- No loss from rent arrears
  - 24/7 maintenance
  - Maximum rent paid
- No management fees
- Regular inspections
- No furniture needed\*\*
  - Free repairs\*\*
  - HMOs welcome

\*\*T&CS APPLY

Fantastic rental rates available  
for properties in London & Essex  
**Landlords enquire now.**



\*£1,000 cashback valid on new Elliot Leigh Guaranteed Rent leases signed between 15th September 2023 - 31st December 2023. Offer applicable on brand new contracts with a minimum 3 year lease agreement. Offer excludes contract renewals. Payment will be made once a tenant moves into the property.

[www.elliotleigh.com](http://www.elliotleigh.com)



0208 983 4444